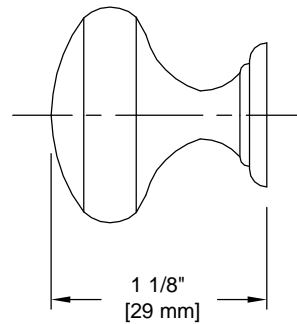
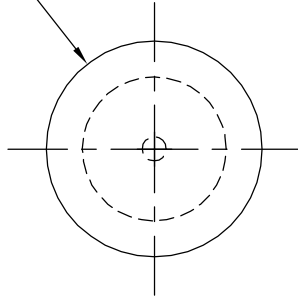


PRODUCT DATA SHEET

Product Description: Decorative knob perfect for kitchen or bath cabinets. 1 1/8" diameter x 1 1/8" projection. Fabricated from die cast zinc with a US19 matte black finish. Individually packaged with 1" length and 1 3/8" length (M4x0.7) mounting screws.

Ø1 1/8"
[Ø29 mm]



Overall Size: 1 1/8" W X 1 1/8" H X 1 1/8" D

Material: Zinc

Finish: US19 Matte Black

Cross Reference

Manufacturer	Part Number



Description:

**Knob, Mushroom,
Zinc 1 1/8" Dia
X 1 1/8" Projection**

Part Number:

36510

Date

06/22

Rev.

00

Sheet 1 of 1