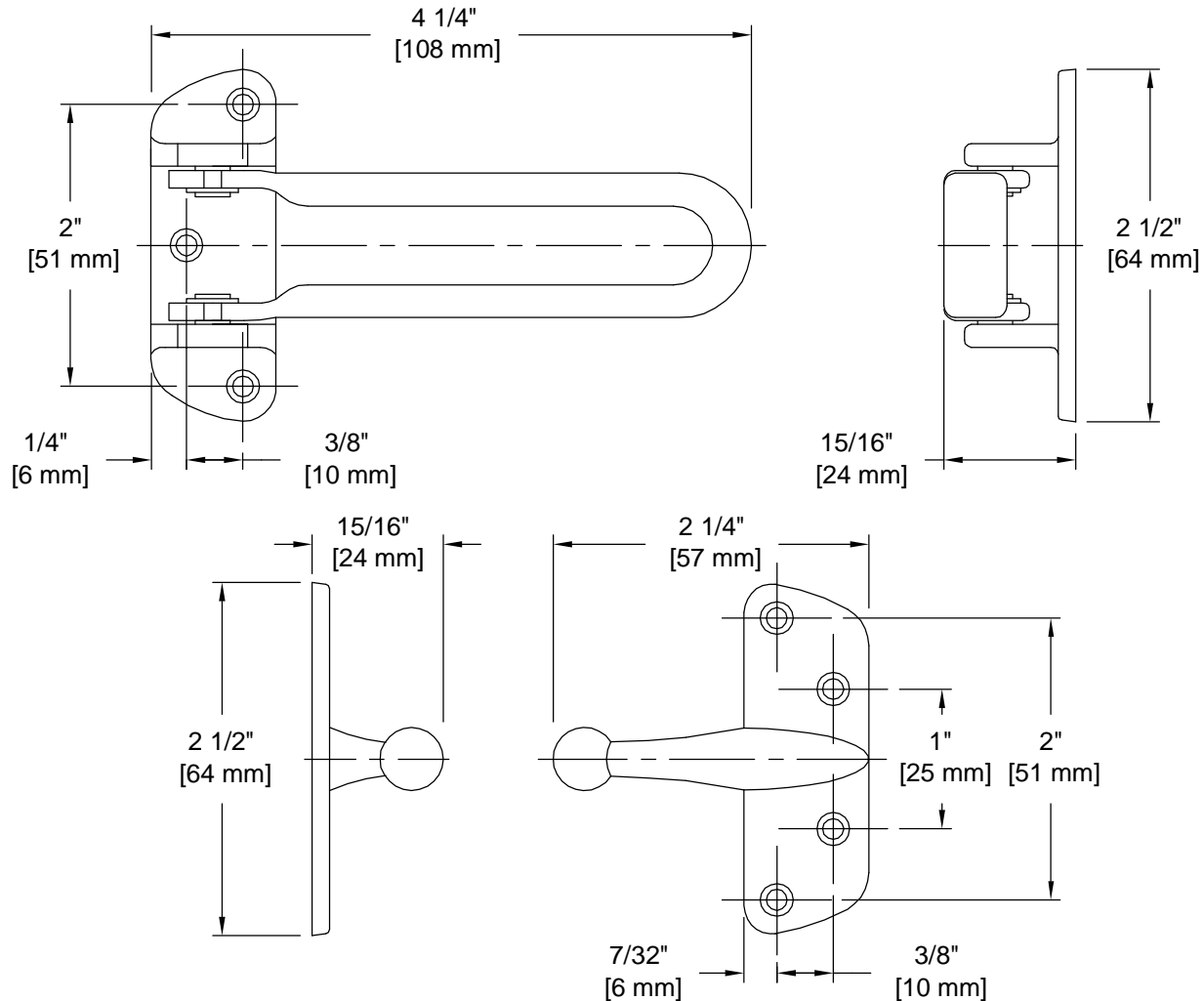


PRODUCT DATA SHEET

Product Description: Swing door guard. Fabricated from zinc with a US26 bright chrome finish. Ships with mounting hardware.



Overall Size: 4 1/4" W X 2 1/2" H X 15/16" D

Material: Zinc

Finish: US26 Bright Chrome

Cross Reference

Manufacturer	Part Number



Description:

Swing Door Guard, Zinc

Part Number:

33094

Date

06/16

Rev.

03

Sheet 1 of 1