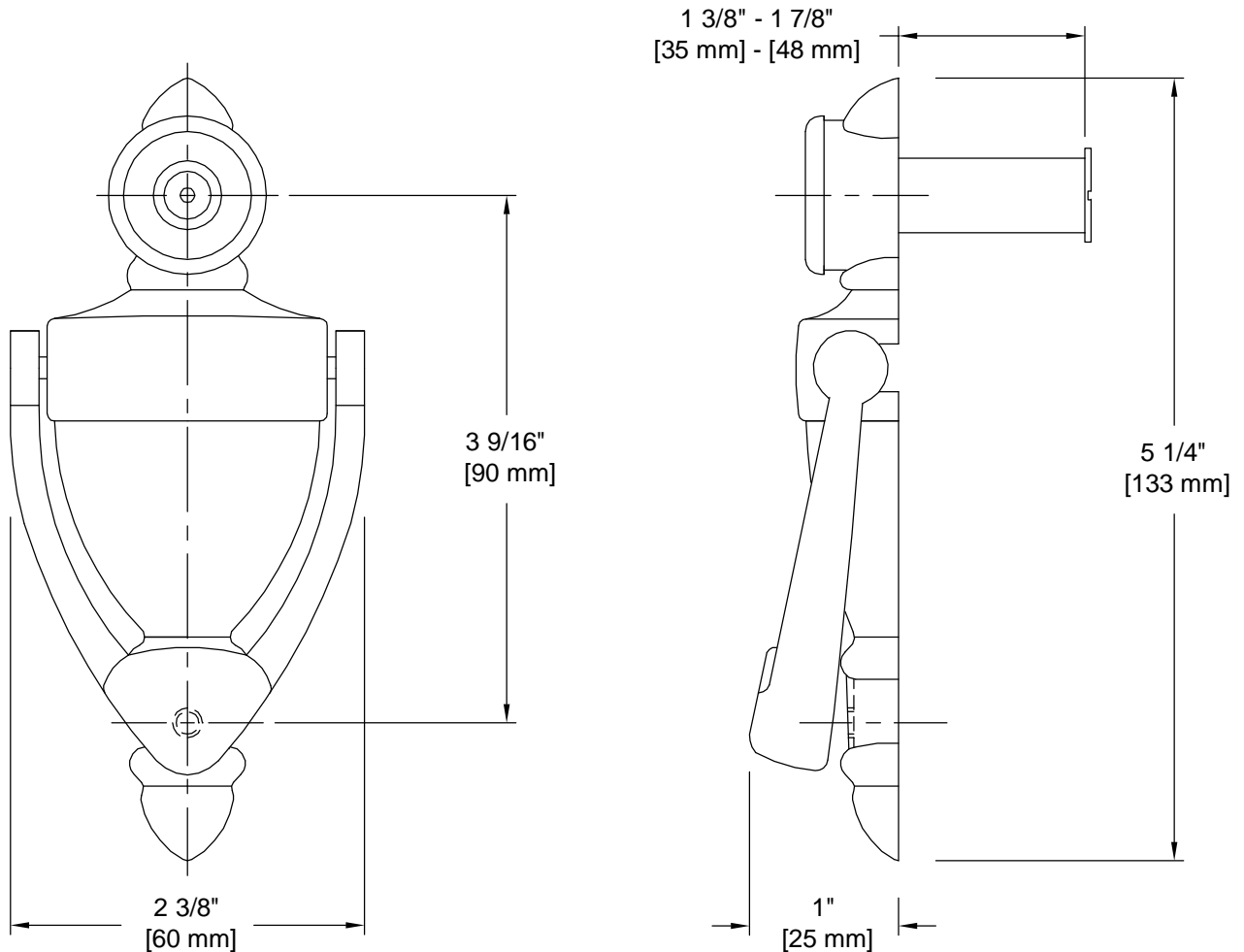


# PRODUCT DATA SHEET

**Product Description:** Door knocker viewer, 1/2" bore, 180 degree view, 5 1/4" high. For 1 1/4 - 1 3/4" thick door. Fabricated from zinc with a US19 matte black finish. Viewing lens fabricated from plastic. Mounting hardware: One 7/8" length screw included.



**Overall Size:** 2 3/8" W X 5 1/4" H X 1" D

**Material:** Zinc

**Finish:** US19 Matte Black

## Cross Reference

Manufacturer	Part Number



Description:

**Door Knocker Viewer,  
1/2" bore, 180, 5 1/4"**

Part Number:

**32546**

Date

06/23

Rev.

00

Sheet 1 of 1