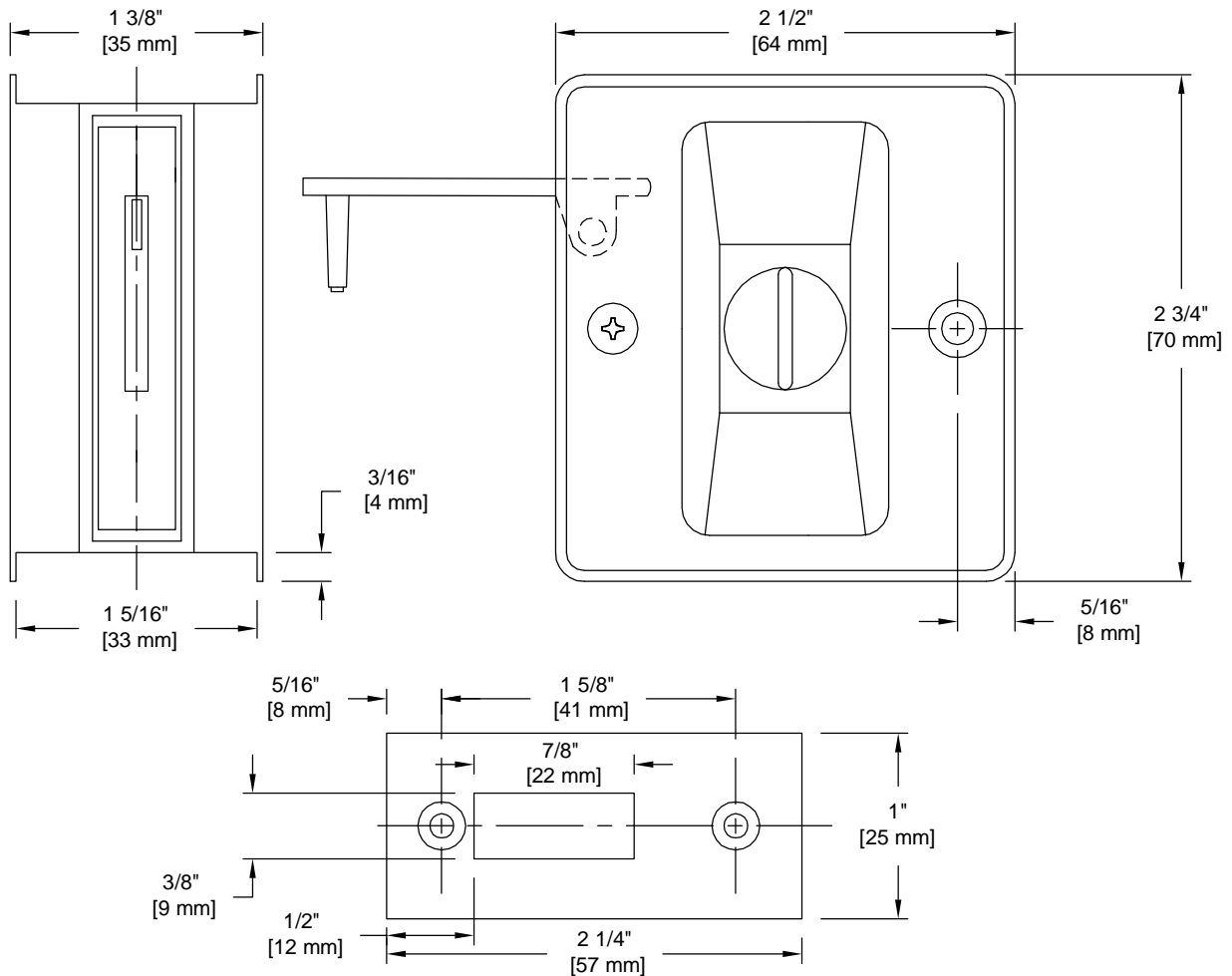


# PRODUCT DATA SHEET

**Product Description:** Pocket door lock, privacy, 1 3/8" x 2 3/4" x 2 1/2". Fabricated from solid brass with a US15 satin nickel finish. Mounting hardware: 2 x 7/16" and 2 x 3/4" length brass screws included.



**Overall Size:** 1 3/8" W X 2 3/4" H X 2 1/2" D

**Material:** Brass

**Finish:** US15 Satin Nickel

## Cross Reference

Manufacturer	Part Number



Description:

**Pocket Door Lock,  
Privacy, 1 3/8" X 2 3/4"  
X 2 1/2"**

Part Number:

**32517**

Date

06/16

Rev.

03

Sheet 1 of 1