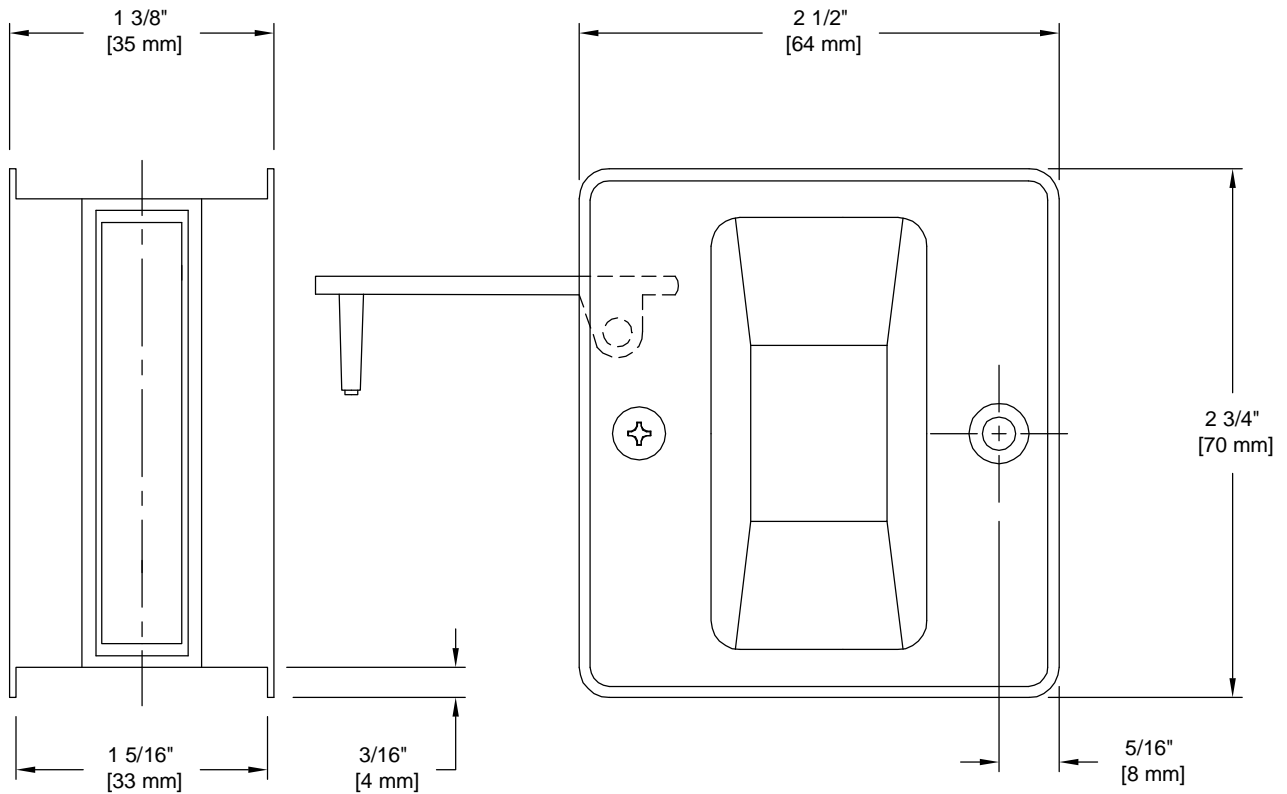


PRODUCT DATA SHEET

Product Description: Pocket door lock, passage, 1 3/8" x 2 3/4" x 2 1/2". Fabricated from solid brass with a US26 bright chrome finish. Mounting hardware: 2 x 7/16" length brass screws included.



Overall Size: 1 3/8" W X 2 3/4" H X 2 1/2" D

Material: Brass

Finish: US26 Bright Chrome

Cross Reference

Manufacturer	Part Number



Description:

**Pocket Door Lock,
Passage, 1 3/8" X 2 3/4"
X 2 1/2"**

Part Number:

32514

Date

06/16

Rev.

03

Sheet 1 of 1