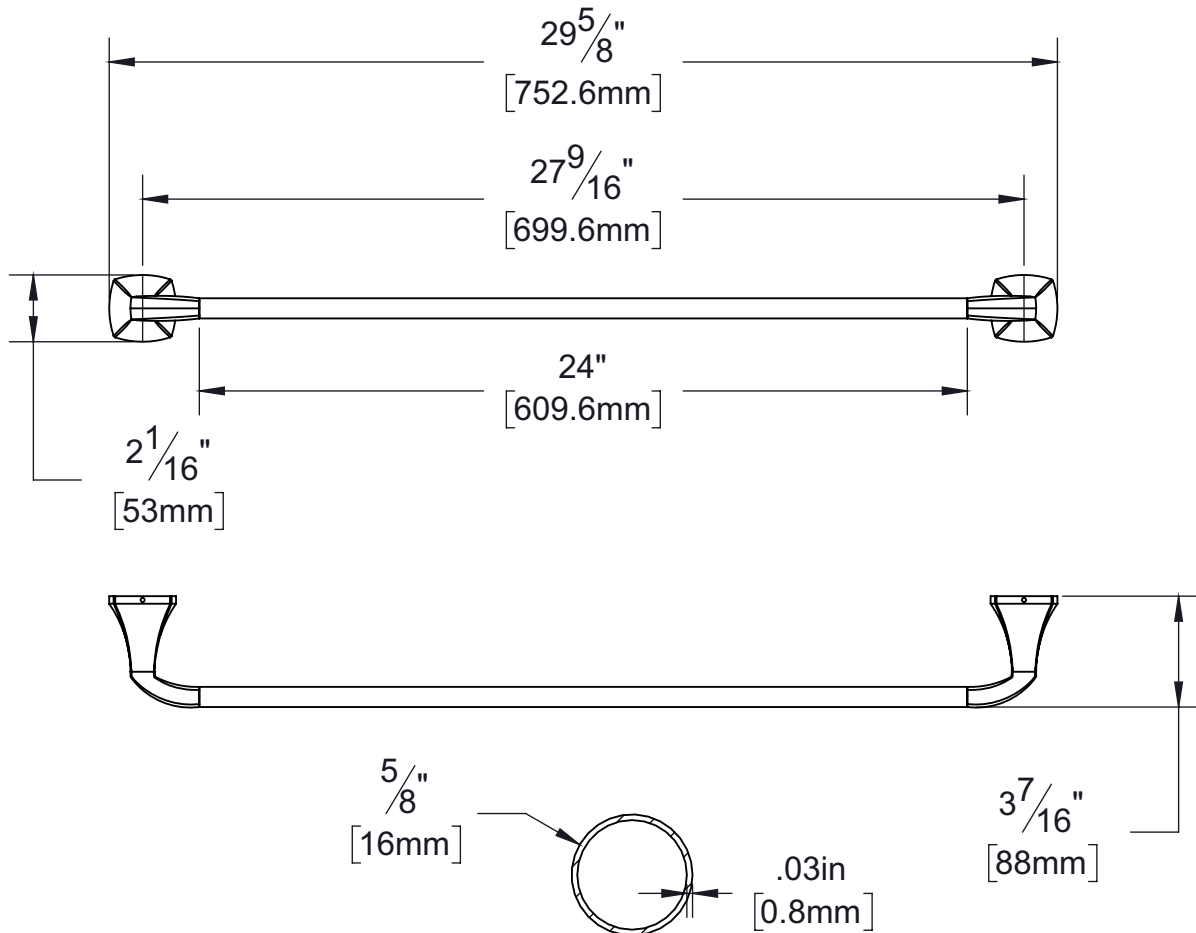


PRODUCT DATA SHEET

Product Description: Towel bar set, 24", Wynwood. Posts are fabricated from die cast zinc with a US19 matte black finish. Bar is fabricated from stainless steel with a US19 matte black finish. Ships with mounting hardware.



TOWEL BAR
CROSS SECTION

Overall Size: 29 5/8" W X 2 1/16" H X 3 7/16" D

Material: Zinc Posts, Stainless Steel Bar

Finish: US19 Matte Black

Cross Reference

Manufacturer	Part Number



Description:

**Towel Bar Set, 24",
Wynwood**

Part Number:

25118

Date

03/19

Rev.

01

Sheet 1 of 1