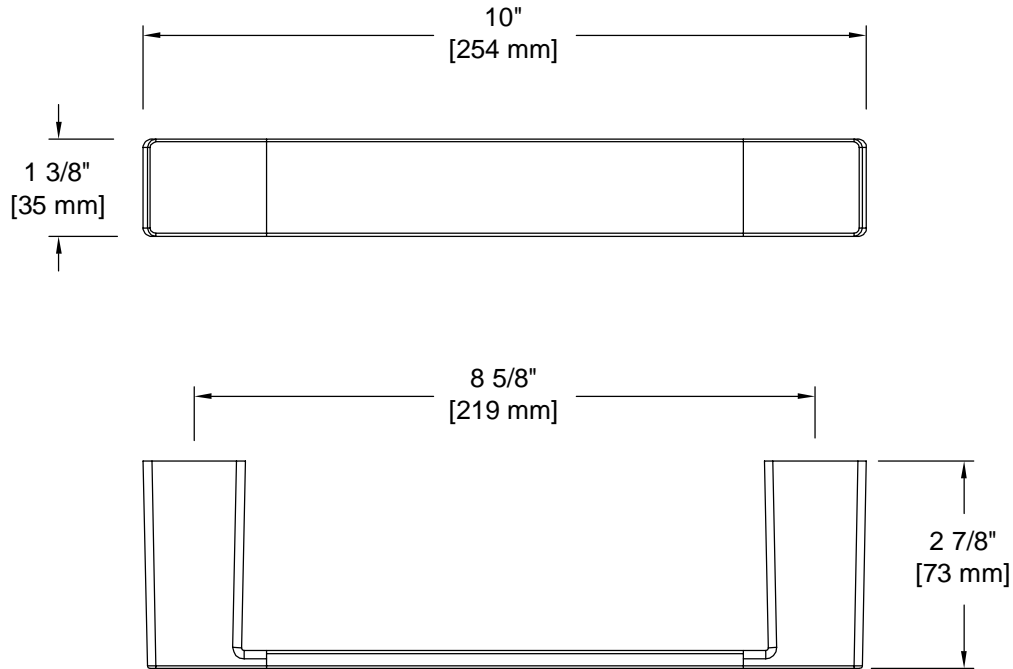


# PRODUCT DATA SHEET

**Product Description:** Towel ring, Westshore. Post is fabricated from die cast zinc with a US26 bright chrome finish. Bar is fabricated from stainless steel with a US26 bright chrome finish. Ships with mounting hardware.



WITH MOUNTING  
HARDWARE

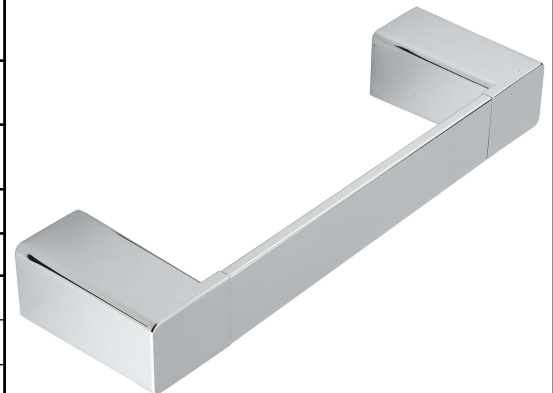
**Overall Size:** 10" W X 1 3/8" H X 2 7/8" D

**Material:** Zinc Posts, 304 Grade Stainless Steel Bar

**Finish:** US26 Bright Chrome

## Cross Reference

| Manufacturer | Part Number |
|--------------|-------------|
|              |             |
|              |             |
|              |             |



Description:

**Towel Ring,  
Westshore**

Part Number:

**23059**

Date

**06/16**

Rev.

**02**

Sheet 1 of 1