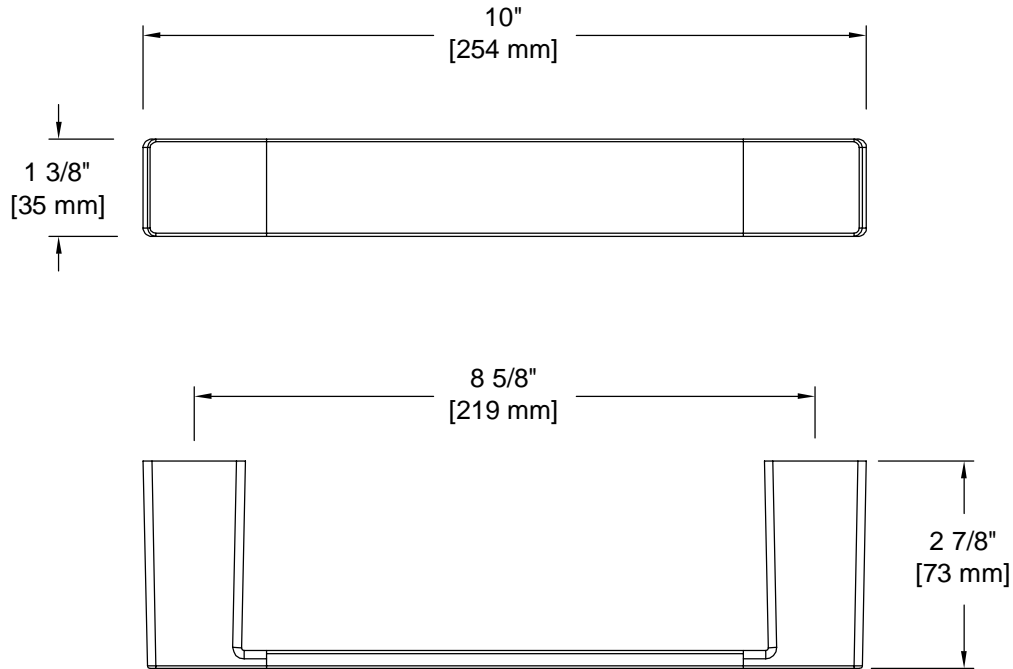


PRODUCT DATA SHEET

Product Description: Towel ring, Westshore. Post is fabricated from die cast zinc with a US15 satin nickel finish. Bar is fabricated from stainless steel with a US15 satin nickel finish. Ships with mounting hardware.



WITH MOUNTING
HARDWARE

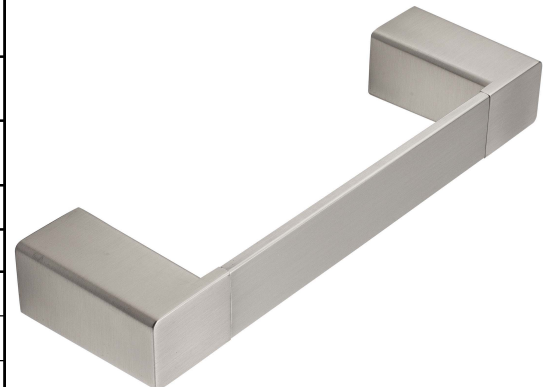
Overall Size: 10" W X 1 3/8" H X 2 7/8" D

Material: Zinc Post, 304 Grade Stainless Steel Bar

Finish: US15 Satin Nickel

Cross Reference

Manufacturer	Part Number



Description:

**Towel Ring,
Westshore**

Part Number:

23054

Date

06/16

Rev.

02

Sheet 1 of 1