

Featured in the Motion Picture *STAND BY ME*

STAND BY ME

Listen to Luigi's Baton
and Mike as they
"make the band"
by welcoming
the bass guitar.



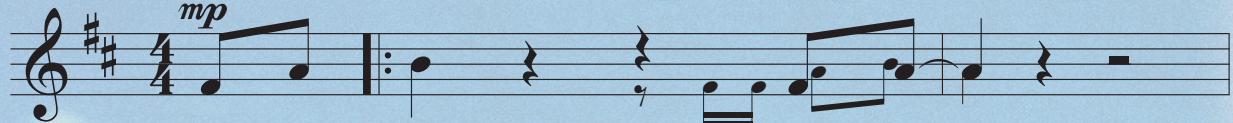
Words and Music by
JERRY LEIBER,
MIKE STOLLER
and BEN E. KING

Arranged by ROGER EMERSON

(8 measure introduction)

Soul Rock

mp



When the night sky has come
that we look up - on



and the land is dark, and the
should tum - ble and fall, and the



moon moun-tains is the on - ly light we
should crum - ble in - to the



see, sea, oh, I won't be a - fraid. I won't cry.



No, I won't be a - fraid, just as long
No, I won't shed a tear,



as you stand, stand by me. So

Copyright © 1961 Sony/ATV Music Publishing LLC

Copyright Renewed

This arrangement Copyright © 2012 Sony/ATV Music Publishing LLC

All Rights Administered by Sony/ATV Music Publishing LLC, 8 Music Square West, Nashville, TN 37203
International Copyright Secured All Rights Reserved