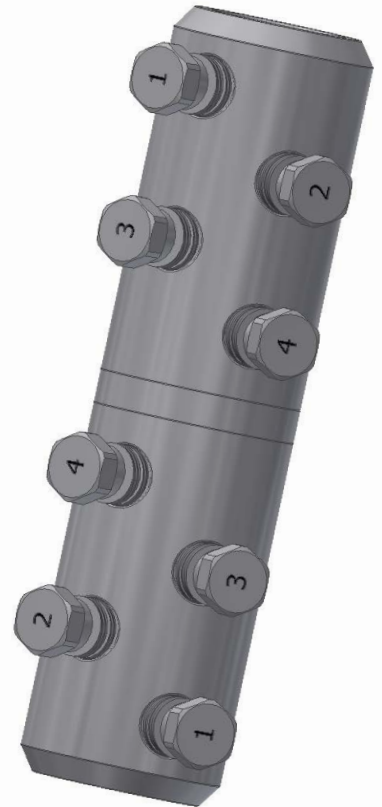
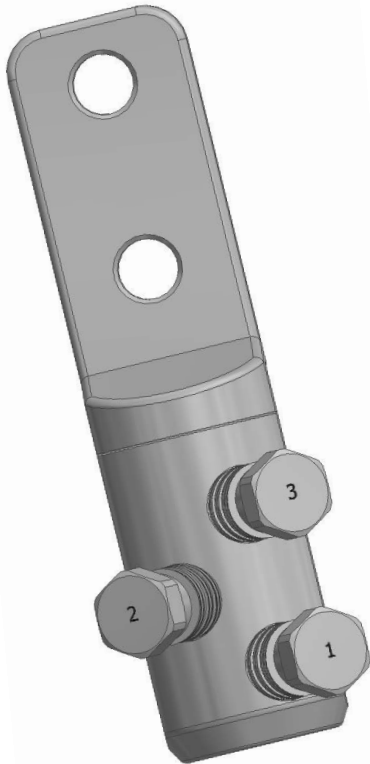


General shear bolt connector installation instructions



"Do Not Remove Bolts Prior To or During Connector Installation"
"Do Not Wire Brush Spade on Lugs"

Follow the same installation sequence for all types of PCS connectors.

1. Remove cable insulation equal to connector bore depths and insert conductor making sure it hits the connector bore stop.
2. Prepare exposed conductor by wire brushing and apply your company's approved inhibitor.
3. Insert conductor into connector bore and hand tighten bolts making sure bolts make good tight contact with conductor.
4. Hold connector with glove hand and using a 3/4" six points deep impact socket and a 18V battery impact tool, tighten each bolt at least twice with the impact driver always starting with the outside bolt following the numerical sequence shown above and proceed to shear each bolt in the same sequence shown.

Connector installation is now complete

GRESKO

Phone: (877) 743-0622 E-mail: pcs@gresco.com website: www.gresco.com

