

Canad Inns Destination Center

Features

Mtg. Capacity: 16-150 people
Specialty rooms: VIP Suites
Shuttle Service: airport
Courtesy shuttle

**1000 South 42nd Street
Grand Forks, ND 58201
www.canadinns.com**

- Entertainment complex attached to the Alerus Center
- 201 rooms with penthouse floor, executive suites with fireplace, adult theme suites with Jacuzzi, king leisure with Jacuzzi, kids theme rooms, deluxe queen and king rooms and accessible guests rooms
- 40,000-square-foot aquatics center with pool, waterslides, sprayers, lazy river, hot tub and arcade
- Restaurants: I' Bistro's Italian Eatery, AALTOS, Garbonzo's Pizza
- Nightlife: Tavern United Sports Pub and Playmakers All-American Gaming Lounge & Casino
- Amenities: wireless high-speed internet, in-room refrigerators, in-room microwaves, hotel business center and gift shop
- Ambassador Conference Rooms A & B can host 25 people each, Upper Level Ambassador C can accommodate 100 in rounds and Ambassador D can accommodate 80 theatre style



Meeting	Theatre	Hollow Square	Boardroom	Classroom	U-Shape	Banquet	Reception
Ambassador A	32	24	20	18	20	24	32
Ambassador B	32	20	18	18	16	20	32
Ambassador C	150	50	50	80	45	100	150
Ambassador D (2nd Floor)	80	30	30	30	24	40	50
Playmakers - Upper Level	N/A	N/A	N/A	N/A	N/A	50	150

Hilton Garden Inn Grand Forks/UND

Features

Meeting/banquet rooms: 3
Capacity: 200 people

4301 James Ray Drive
Grand Forks, ND 58203
Phone: (701) 775-6000
Or 877-STAYHGI

Fax: (701) 746-0298

www.grandforksund.stayhgi.com

- 100 guest rooms (32 suites); each with refrigerator, microwave and coffee maker
- Complimentary in-room wired and wireless high-speed internet access; two telephones with voice mail and dataports
- 24 – hour business center
- Heated indoor swimming pool, whirlpool, fitness center
- Great American Grill Restaurant and Hanger Lounge
- Located on the western edge of the University of North Dakota campus and connected via a skywalk to the John D. Odegard School of Aerospace Sciences.
- Free Parking: 150 vehicles



Meeting	Square Feet	Banquet	Classroom	Theatre	Reception
Ray Executive Boardroom	672	-	-	-	-
Buchli	1,440	80	60	130	80
Dahl	1,440	80	60	130	80
Buchli/Dahl	1,440	200	160	250	200

Ramada

Features

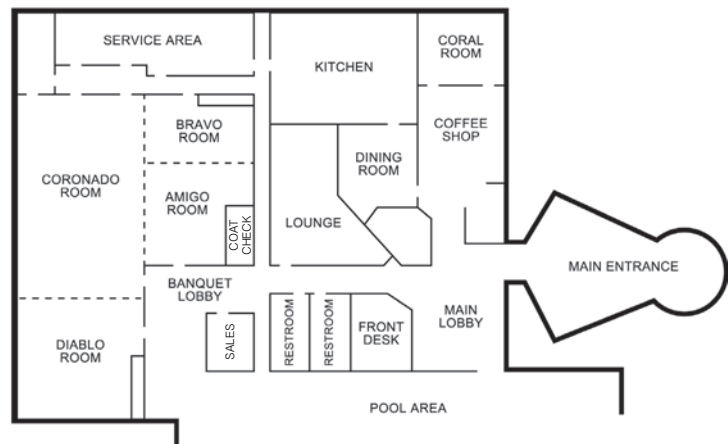
Meeting/banquet rooms: 7
Capacity: 750 people
Parking: 300 vehicles
Shuttle Service: airport
Courtesy Shuttle

Jct. I-29 and Us Hwy. 2
Grand Forks, ND 58203
Phone: (701) 775-3951
Toll Free: (800) 2-RAMADA
www.ramada.com

- 100 guest rooms with dataport phones, high speed internet, voice mail and other amenities
- Indoor swimming pool, sauna, and whirlpool
- B&B's Restaurant and Dreamer's Lounge
- A "Gold Key Ramada" and winner of the "Inn of the Year" and the "Guest Service Award"
- Free Parking

RAMADA®

WORLDWIDE



Meeting Rooms	Square Feet	Banquet	Classroom	Theatre	Reception
Conference Center	6,232	750	430	900	800
Amigo	896	80	63	117	100
Bravo	864	72	45	100	100
Coronado	2,924	350	220	453	400
Diablo	1,548	156	90	170	180
Coral	459	40	-	50	50
Governors	550	-	25	50	60

TownHouse Hotel

Features

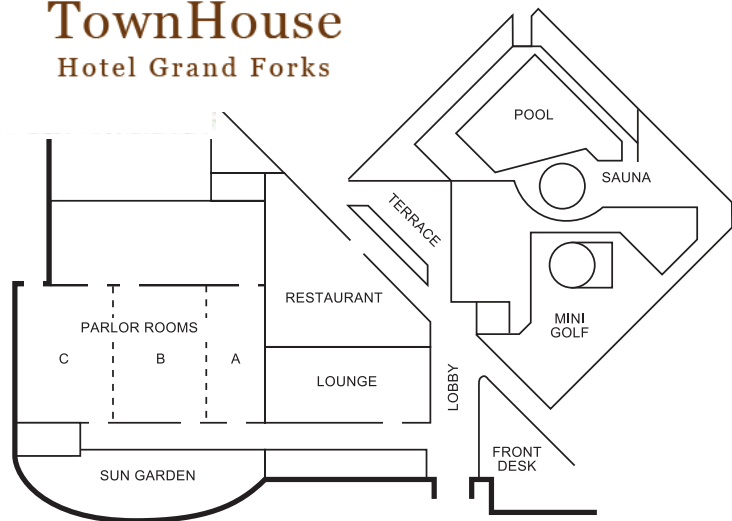
Meeting/banquets rooms: 4
Capacity: 300 people
Specialty rooms; Deluxe
Hospitality Suites
Shuttle Service: airport
Courtesy shuttle

710 1st Avenue N.
Grand Forks, ND 58203
Phone: (701) 746-5411
Toll Free: (800) 733-7663
www.townhousehotel.com

- 104 guest rooms
- Indoor atrium with swimming pool, whirlpool, miniature golf and more
- Muddy Rivers Bar & Grill with charitable gaming, entertainment and catering
- Free Parking



TownHouse Hotel Grand Forks



Meeting Rooms	Square Feet	Banquet	Classroom	Theatre	Reception
Parlor Room A	800	48	32	60	40
Parlor Room B	1,200	100	60	150	64
Parlor Room C	1,200	100	60	150	64
Parlors B & C	2,400	225	130	300	128
Parlors A, B and C	3,200	265	184	360	168
Parlors A, B and C (with dance floor)	3,200	196	-	-	128

Alerus Center

The Alerus Center is one of the largest sports, convention and entertainment facility of its kind between Minneapolis and Seattle. It boasts adjustable concert seating for anywhere from 2,000 to 21,000 people. This state-of-the-art facility has more than 160,000 square feet available for banquets, meetings and exhibits with a variety of powerful sound system and presentation hook-ups. The Alerus Center also houses a dozen conference room and a 25,588-square foot ballroom.



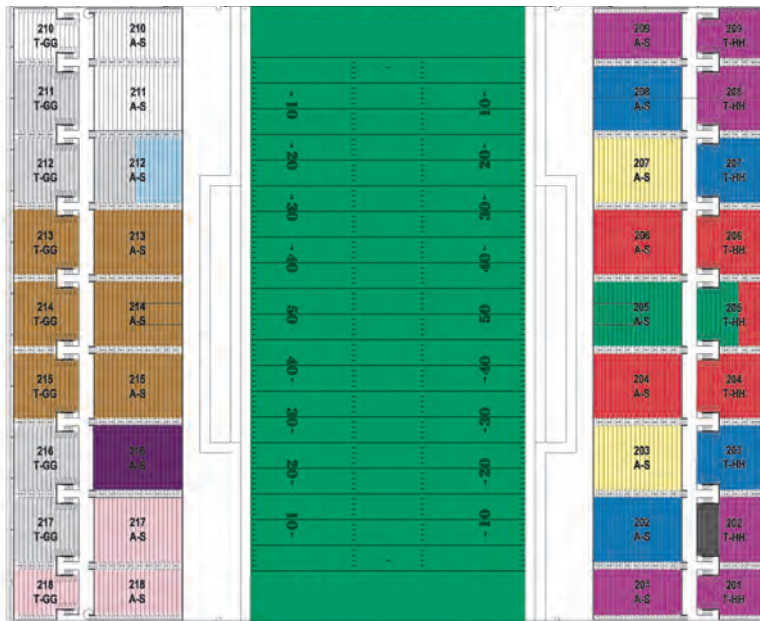
Meeting Rooms	Square Feet	Banquet	Classroom	Theatre	Reception
Rooms 2, 3, 5, 10, 12	1,380	80	72	140	40 HSQ
Rooms 1, 4, 11	598	30	24	50	16 HSQ
Rooms 6-7, 8-9	690	40	32	56	28 HSQ
Ballroom 1, 3	2,052	120	104	241	56 HSQ
Ballroom 2	1,344	80	60	144	40 HSQ
Ballroom 4	9,790	450	448	1,050	55 Booths
Ballroom 5	10,350	520	448	1,050	55 Booths
Ballrooms 1-5	25,588	1,490	1,400	3,150	140 Booths
Main Arena Floor	100,000	-	-	-	-
Prefunction Area	15,000	-	-	-	-

Alerus Center

Able to accommodate a variety of sporting events, the Alerus Center is home to the University of North Dakota Football team and has hosted soccer, wrestling, basketball, monster trucks and Super Snowcross among other events. This remarkable facility has the capacity to host local, regional, and national sporting events.

Behind the scenes

Locker rooms are divisible into four 25-locker sections. There are dressing rooms for coaches and officials and also 14 luxury VIP suites and a VIP club area with seating for approximately 75, eight concession stands, two vending stands, 14 ticket windows and four merchandise stands.



Concert Event		Capacity
Half Arena		11,000
Full Arena		21,000
Athletic Event		Capacity
Football		13,500
Soccer		13,500
Basketball		9,500
Theater Event		Capacity
Theater Set		2,600

Additional Features

Meeting/banquet rooms: 17
Capacity: up to 21,000 people
Free Conference Parking: up to 3,100 vehicles
Shuttle Service: as requested

1200 42nd Street South
Grand Forks, ND 58203
Phone: (701) 792-1200
Fax: (701) 746-6511
Event Line: 701-792-1420
www.aleruscenter.com

Alerus stats

- Football Seating
Capacity: 13,500
- Concert Seating
Capacity: 21,000
- Two basketball floors
- Two 21X63 ft. Panasonic Digital Video Display Boards for viewing relays, live feed and messages.
- Converts from a showroom floor to a playing field in just hours
- An Astroturf Magic Carpet provides a seamless playing surface
- Easy load-in and load-out through doors on the north and south entrances
- Moveable risers allow for various seating configurations
- 160,000 square feet of exhibit space