

Worksheet 3.3, page 1

Intro to Music Theory
 gracemusic.us/theory

Name _____

A. For each major scale, write the tonic, dominant, and tonic pitches as whole notes, and play them on the piano.

C major:

F major:

D major:

A musical staff in bass clef with a treble clef. The first measure contains three whole notes: C2, C3, and C4. The rest of the staff is empty.

B \flat major:

E major:

A major:

An empty musical staff in bass clef with a treble clef, divided into three measures.

A \flat major:

B major:

E \flat major:

An empty musical staff in bass clef with a treble clef, divided into three measures.

D \flat major:

F \sharp major:

G major:

An empty musical staff in bass clef with a treble clef, divided into three measures.

B. Write the notes indicated by the diatonic function in the C major scale.

A musical staff in treble clef with a treble clef. The staff is divided into six measures. Below the staff are labels for diatonic functions: leading tone, mediant, supertonic, dominant, tonic, and subdominant.

leading tone

mediant

supertonic

dominant

tonic

subdominant

An empty musical staff in bass clef with a treble clef, divided into six measures.

tonic

submediant

dominant

leading tone

subdominant

supertonic

Worksheet 3.3, page 2

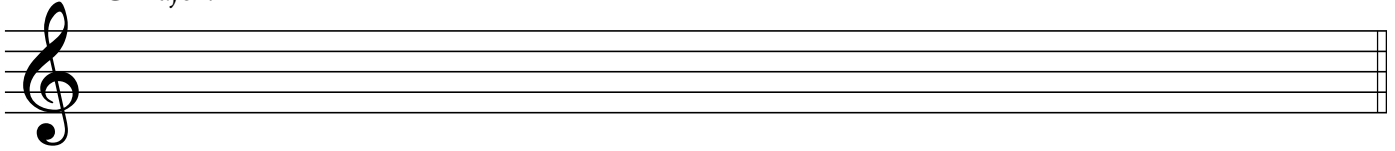
Intro to Music Theory

gracemusic.us/theory

Name _____

C. For each given major scale, write out the scale on the blank staff system. Then label the diatonic functions of the written notes below, and the solfege above. If a note is a tendency tone, write the note it resolves to, and label the solfege for that note.

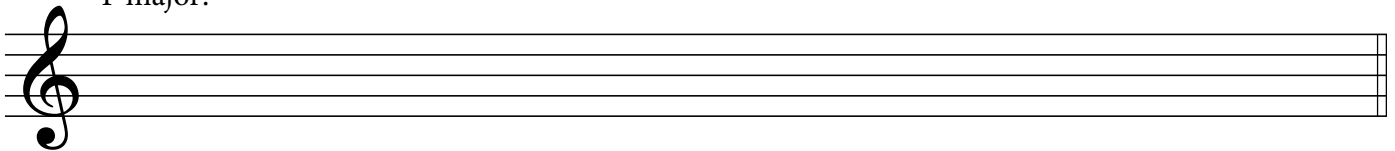
C major:



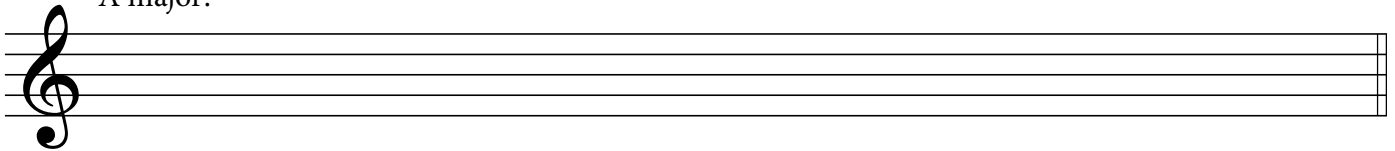
f *m*

subdominant _____

F major:



A major:

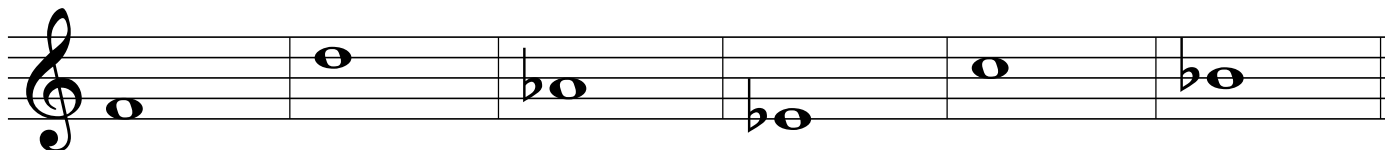
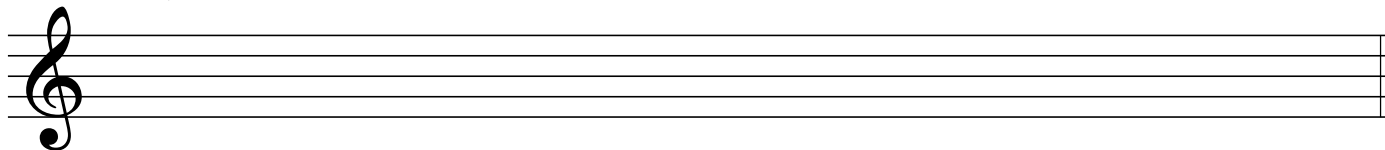


Worksheet 3.3, page 3

Intro to Music Theory
gracemusic.us/theory

Name _____

E \flat major:



G major:

