

Lead Sheet

Christ Returns

Driving, joyful ♩ = 116

F B♭ Dm C/E F B♭

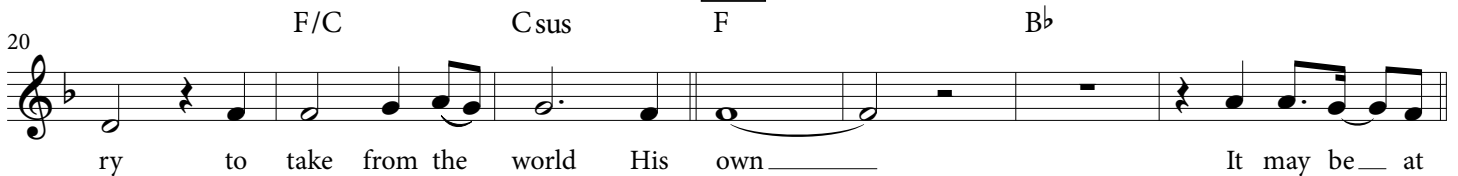


It may be__ at

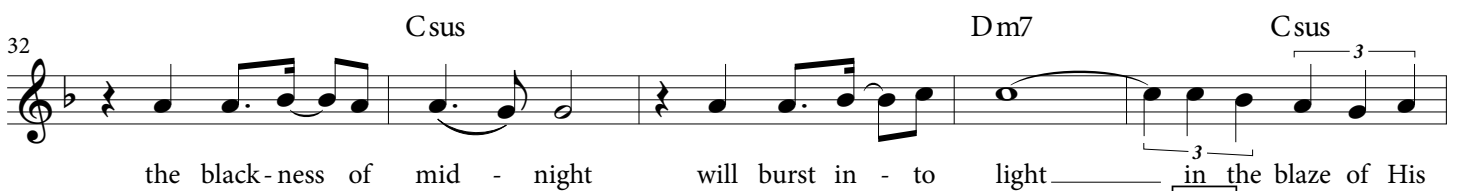
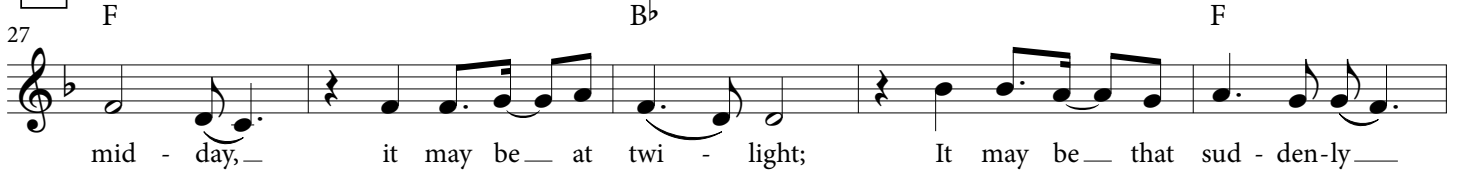
V.1



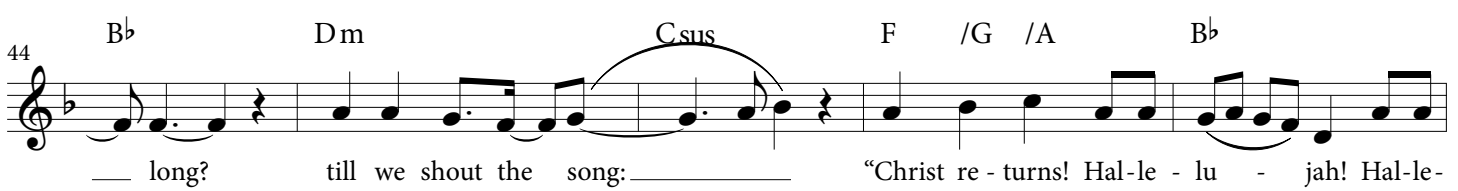
Int.1



V.2



Ch.1



49 **Int.2** **V.3**
 C sus F B \flat F
 lu - jah, a - men!" _____ While heav - en cries, "Ho - ly!" _____

55 B \flat F
 to earth He de - scends, with saints all a - round Him, and those who en - dured to the

60 C sus Dm7 C sus B \flat
 end. Their names on His brow, _____ His Word on their hearts, _____ when

66 F/C C sus B \flat **Ch.2** F B \flat
 Je - sus comes to take His own. _____ O Lord Je - sus, how long? _____

72 Dm C sus F /G /A B \flat
 till we shout the song: _____ "Christ re - turns! Hal - le - lu - jah! Hal - le -

76 **Bridge** C sus F D \flat E \flat A \flat E \flat /G
 lu - jah, a - men!" _____ O glad - ness of de - light, should He come be - fore we

82 **Bridge 2** Fm /E \flat D \flat E \flat F /E \flat D \flat
 die, and we are caught a - way to live with Him. _____ But though our flesh may

88 E \flat A \flat E \flat /G Fm D \flat E \flat C sus
 fail, one day be - yond the veil, with new - made eyes we'll see and live a - gain! _____

Christ Returns - Lead Sheet, page 3

94 F B \flat Dm Csus

O Lord Je-sus, how long? till we shout the song?

Ch.3 100 G C Em Dsus G /A /B

O Lord Je-sus, how long? till we shout the song: "Christ re - turns! Hal-le-

105 C Dsus Em D/F# G /A /B **Tag**

lu - jah! Hal-le - lu - jah, a - men!"

109 C Dsus G C

lu - ia! Hal-le - lu - ia, a - men!"