

## WELCOME

We're glad you've joined us this morning! Feel free to check things out and decide whether we might be a good match for your spiritual growth. You set the pace for your involvement here — here's some helpful information to get you started!

## CONNECTING HOUR

During the 9:30 AM Connecting Hour today, you have several opportunities to connect with others in our church family. You can share a cup of coffee in the hall, serve together in ministry to others, or attend one of these Bible Fellowships:

<b>Pre-K – 3rd Grade</b> <b>Middle School</b>	Kids' Area The Gym	<b>4th – 5th Grade</b> <b>High School</b>	The Loft The Gym
<b>Adults 1</b> ( <i>College – 20s</i> )	Room 210	<b>Adults 2</b> ( <i>30s – 40s</i> )	Room 206
<b>Adults 3</b> ( <i>50s – 60s</i> )	Room 208	<b>Adults 4</b> ( <i>60s – 70s</i> )	Room 209
<b>Adults 5</b> ( <i>70s &amp; up</i> )	Room 207	<b>Just for Women</b>	Room 201

## KIDS AND FAMILIES

Sunday mornings now include time for your children to join you in worship and learn what it means to be part of our church family. Nursery care is available all morning long for little ones not yet attending school.

**8:00 AM:** Kids in Pre-K and up join their families for the entire worship service.

**9:30 AM:** Kids of all ages attend a Bible Fellowship during Connecting Hour, and should be picked up promptly before the next service.

**10:45 AM:** Kids in Pre-K and up begin the worship service with their families and stay until parents take them to an age-appropriate Bible lesson for grades 3 and under (after about 20 minutes). Grades 4 and up stay in worship with their family.

## FAQS

**Where do I learn more about Grace Church?** For the best answers to questions you may have while you're here, look for one of our team members with a nametag. For details about our story, beliefs, staff, and campus, pick up a white *Guide to Grace Church* at the welcome desk or near any exit. For details about what's happening this semester, pick up this semester's *Guide to Weekly Activities* leaflet.

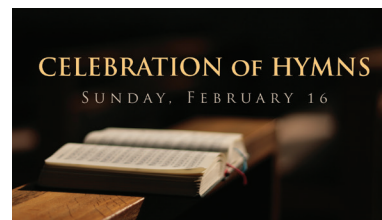
**How do I become a member of Grace Church?** We do not have a formal system of membership. If you consider this your church home and participate regularly with us, you're part of our family! If you want to be sure you're on our contact list, simply sign up to attend any class or event (or contact the church office directly).

**How do I give to support Grace Church?** We believe financial giving is a form of individual worship to be done freely and joyously as led by the Lord. You can place your gifts in the secure offering boxes mounted near most exits or give electronically online at any time via our website.

**What was the name of that song we sang this morning?** You can find and hear the songs we sing each week by using the Spotify music app (or Spotify.com) and searching for *Grace Church – Sunday Playlist*. You can also search for *Grace Church – Song Library* to hear the complete collection of songs we use on a regular basis.



Parents—online registration for Pine Cove's Camp in the City opens this Tuesday, February 11 at 10 AM for kids who are finishing up kindergarten through 5th grade! The registration process is handled by Pine Cove at [campinthecity.com](http://campinthecity.com).



We invite you to join us for this next chapter in our partnership with the Jamaica Deaf Village! Find out how the Lord has used this trip to build relationships between our church family and the people living there—visit our table in the Main Hall after worship.

Anyone is invited to join this upcoming evening hosted by our senior adults as they worship together through a variety of their favorite songs.

*February 16 at 6:30 PM in the Chapel*

## INFORMATION

5214 Stone Lake Drive, 76310 • 940-692-4251 • [info@gracechurch.com](mailto:info@gracechurch.com)

## ELDERS

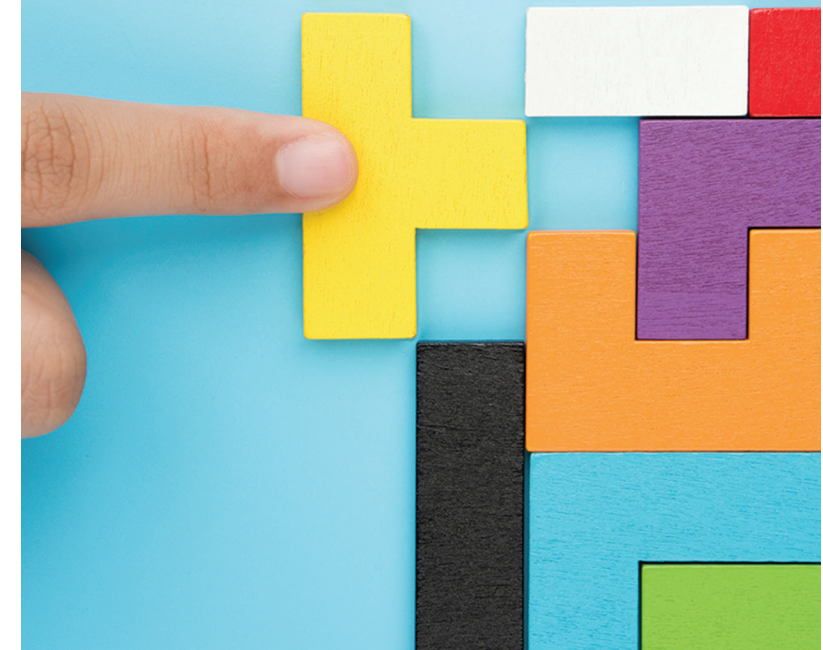
Harry Allison	Brian Chance	Jim Chandler	Bill Daniel
Charlie Eipper	Bill Gowan	Phil Ringman	Larry Schmeltzer

## PASTORS

Lance Bourgeois	Reggie Coe	Blake Boyd	Nolen Smith
Derek Hughes	Joe Cook	Geoff Meador	Caleb Levell
			Josh Fernberg

# THE ANSWER TO LIFE'S ULTIMATE QUESTION

**A Sunday Morning Study of Ecclesiastes**



THIS WEEK

CHURCHWIDE

Worship Service

Today, 8:00–9:15 AM in the Chapel

Connecting Hour

Today, 9:30–10:30 AM around the campus

Worship Service

Today, 10:45 AM–Noon in the Gymnatorium

Community Groups

Today, 5:30–7:30 PM, in host homes

ADULT STUDIES

1 John: What is Fellowship?

Wednesday, 6:30–8:00 PM, in Room 206

Fighting for Your Marriage

Wednesday, 6:30–8:00 PM, in Room 207

The Bondage Breaker

Wednesday, 6:30–8:00 PM, in Room 208

MEN

Romans: A Life in Christ

Tuesday, 6:00–7:30 AM or  
Tuesday, 6:30–8:00 PM in Room 207

Samson Society

Thursday, 7:00–8:30 PM, in the Library

WOMEN

John: Life in His Name

Tuesday, 10:00–11:30 AM, in Room 206 or  
Tuesday, 6:30–8:00 PM, in Room 201

Jonah: Navigating a Life Interrupted

Tuesday, 10:00–11:30 AM or  
Tuesday, 6:30–8:00 PM, in Room 208

SENIOR ADULTS

Romans: A Life in Christ

Tuesday, 1:00–2:00 PM, in Room 111

COLLEGE

LateNight

Tuesday, 8:00–10:00 PM, in the Loft

HIGH SCHOOL

Bible Study

Tuesday 6:00–7:15 AM, at the GYM

The Gym

Wednesday, 6:30–8:00 PM, at the GYM

MIDDLE SCHOOL

Foundations

Monday, 6:30–7:30 PM, at 4635 North Shore

The Gym

Wednesday, 6:30–8:00 PM, at the GYM

4TH & 5TH GRADE

Dinner and a Movie

Today, 5:30–8:00 PM, in the Loft

Ignite

Wednesday, 6:30–8:00 PM, in the Loft

CHILDREN

Kids’ Quest

Wednesday, 6:30–8:00 PM, in the Kids’ Area

MESSAGE | ECCLESIASTES 5:8–20

Lesson 6: Money Matters

Reggie Coe, Senior Adult & Marriage Pastor

- I. **Government and your money:** Resources can be lost through governmental oppression, injustice, and extortion—*Ecclesiastes 5:8–9 (NKJV)*.
- II. **Greed and your money:** Our ability to enjoy our assets may be lost through our own greed—*Ecclesiastes 5:10–17*.
- A. Loving wealth and pursuing the accumulation of more will not satisfy us or fulfill us— *Ecclesiastes 5:10*.
- B. With increased wealth comes greater responsibility and greater anxiety— *Ecclesiastes 5:11*.
- C. The pursuit of more does not provide one with a peaceful life— *Ecclesiastes 5:12*.
- D. Hoarding wealth hurts the hoarder— *Ecclesiastes 5:13*.
- E. Sudden economic reversals can leave one’s descendants with no inheritance— *Ecclesiastes 5:14*.
- F. No one takes their wealth with them at death— *Ecclesiastes 5:15–16*.
- G. The belief that wealth is the key to life leads to despair and depression— *Ecclesiastes 5:17*.
- III. **Guide to enjoy your money:** We should enjoy the fruit of our labor in view of the potential of losing our assets and the ability to enjoy them— *Ecclesiastes 5:18–20*.
- A. The Lord intends us to enjoy the fruits of our labor— *Ecclesiastes 5:18*.
- B. The Lord wants us to see the resources He has given us as His gift— *Ecclesiastes 5:19*.
- C. The Lord gives us the ability to not stress over resources but to maintain healthy activity— *Ecclesiastes 5:20*.

NEXT WEEK | ECCLESIASTES 6:1–12

Need a Bible? Please take a free one from the cart at the back of the room!

MY NOTES



WHO I SAW AT CHURCH: \_\_\_\_\_



MY FAVORITE SONG: \_\_\_\_\_



BIBLE VERSES WE READ: \_\_\_\_\_

SOMETHING I LEARNED: \_\_\_\_\_



QUESTIONS I HAVE: \_\_\_\_\_



A DRAWING ABOUT WHAT I HEARD: \_\_\_\_\_

