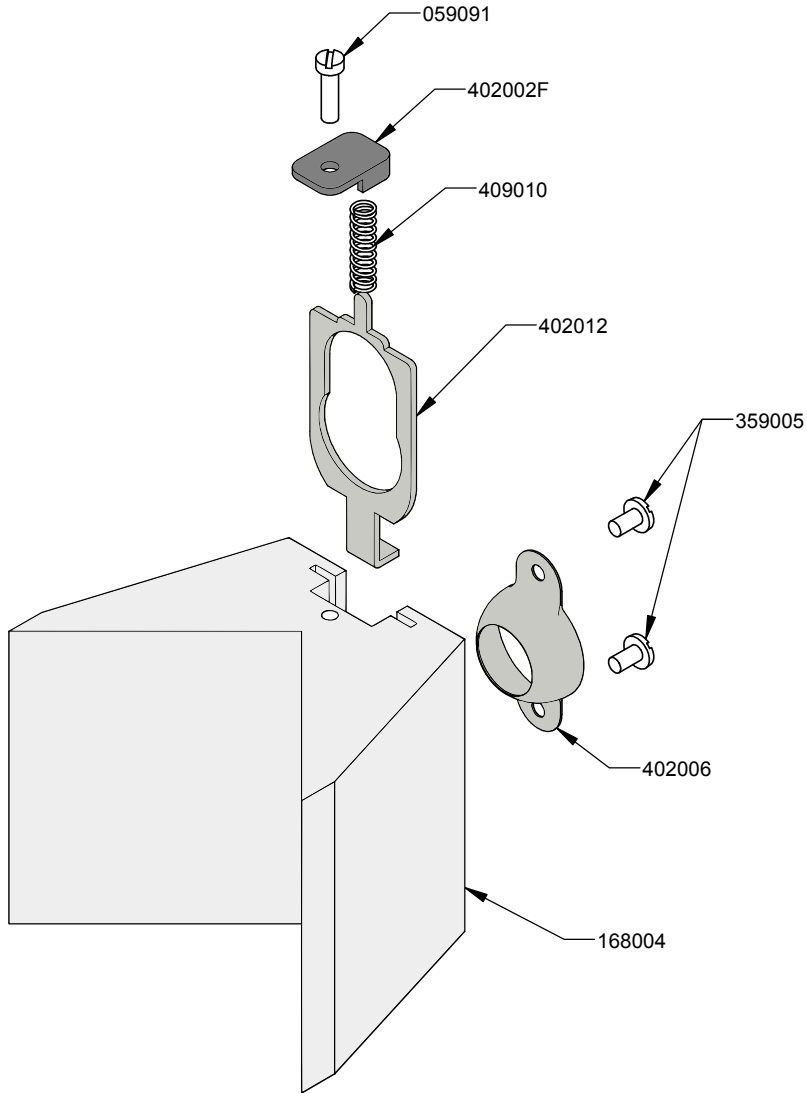



NOTES:  
1) NOT ALL FEATURES SHOWN



REVISIONS				
ECN	REV	DESCRIPTION	DATE	BY
1018	A	RELEASED FOR PRODUCTION	Mar-00	MWJ
1143	B	COMPLETELY REVISED TO MATCH CURRENT VERSION	1-Mar	MWJ
1156	C	UPDATE TO MATCH CURRENT BOM	1-Apr	HM
1397	D	REDRAW IN SOLIDWORKS FORMAT TO MATCH CURRENT BUILD CONFG.	4-Nov	HM

DRAWN			BY	DATE	MUDHEAD, TAPETECH			
CHECKED			MWJ	11/04	 <b>TapeTech</b> <small>an Axia Enterprise</small> <small>PROFESSIONAL DRY-WALL FINISHING TOOLS</small>			
<small>ALL DIMENSIONS IN INCHES UNLESS OTHERWISE NOTED</small> <small>TOLERANCES UNLESS NOTED</small> <small>.XX ± 0.010"      ANGULAR ± 5°</small> <small>.XXX ± 0.005"</small>			MATERIAL: N/A					SIZE
					ASSEMBLY REF. NO. 16TT ASSY			SHEET 1 of 1

<b>Part Number</b>	<b>Description</b>	<b>Quantity Each</b>
059091	Screw 6-32 X 1/2 Slotted Fil. Hd., S.S.	1
168004	Mudhead Body Tapetech	1
359005	Screw: 6-32 X 1/4 Bind Hd.	2
402002F	4800Spring Retainer	1
402006	Insert Socket	1
402012	Ball Retainer	1
409010	Spring	1