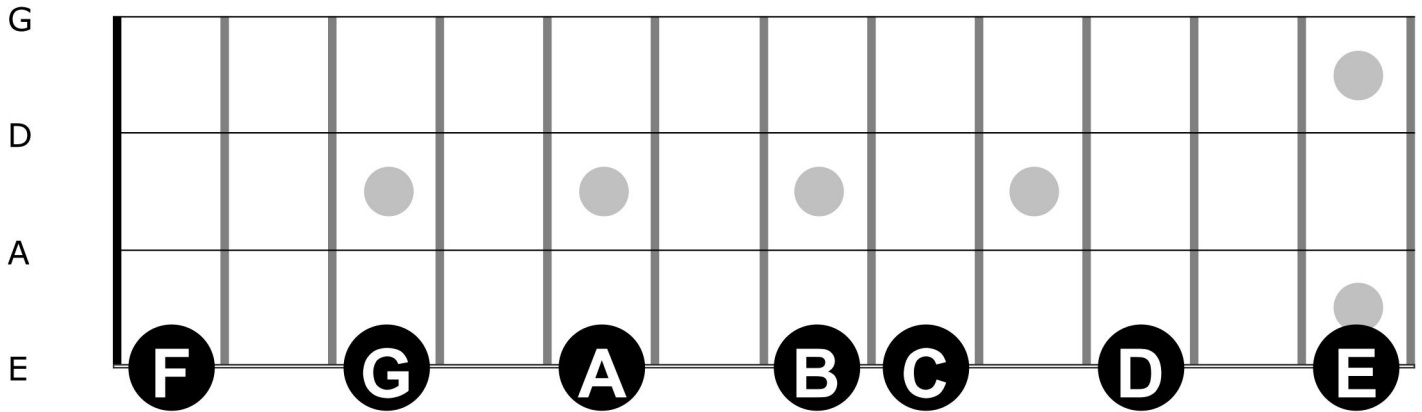
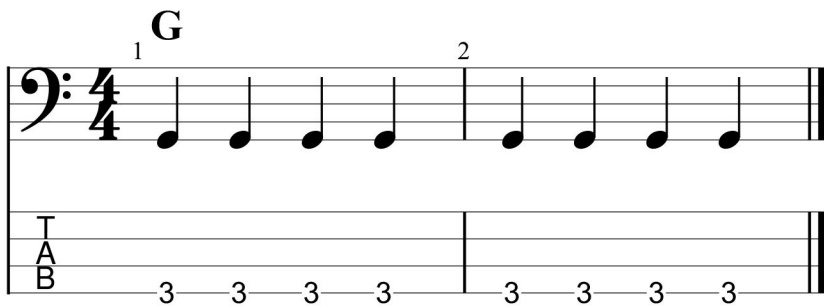




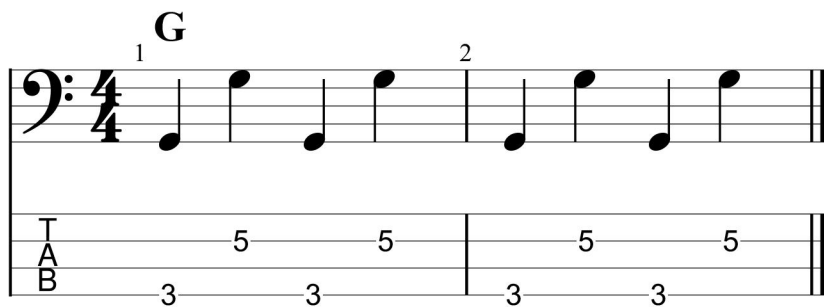
## Notes On The Low E String



## Quarter Notes On G Root Note



## Quarter Notes Octaves G Root Note





# Bass Basics For Guitarists

## Root - 5th - Octave

The image shows a musical score for a bass line in 4/4 time. The top staff is a bass clef with a 4/4 time signature. The notes are: a quarter note on the first line (labeled '1'), a quarter note on the second line (labeled '2'), and a quarter note on the third space (labeled '3'). The bottom staff is a guitar tablature with a treble clef and a 'T' above it. The notes are: a quarter note on the third fret (labeled '3'), a quarter note on the fifth fret (labeled '5'), and a quarter note on the fifth fret (labeled '5').