



GREAT LAKES VALLEY CONFERENCE
BRAND STANDARDS GUIDE
(AUGUST 2023)

GREAT LAKES VALLEY CONFERENCE

BRAND STANDARDS

TABLE OF CONTENTS

3	Introduction
4	GLVC Primary Logo (Print)
5	GLVC Primary Logo (Embroidery)
6	GLVC Secondary Logo (Wordmark)
7	GLVC Field Stencils (No Mark)
8	GLVC Secondary Logo (School-Specific)
9	GLVC Secondary Logo (Sport-Specific)
10	GLVCSN Primary Logo (Hexagon)
11	GLVCSN Primary Logo (Horizontal)
12	GLVCSN Secondary Logo (Shorthand)
13	GLVC Member Institution Logos/Colors
14	GLVC Official Colors
15	GLVC Official Typeface
16	GLVC Minimum Size & Area/Restrictions
17	Mark Placement - Football
18	Mark Placement - Soccer
19	Mark Placement - Volleyball
20	Mark Placement - Basketball
21	Mark Placement - Baseball/Softball
22	Mark Placement - Tennis
23	Mark Placement - Swimming & Diving
24	Mark Placement - Cross Country
25	Mark Placement - Track & Field
26	Mark Placement - Wrestling
27	Mark Placement - Lacrosse
28	Apparel Placement - Basketball
29	Apparel Placement - Football
30	Apparel Placement - Soccer
31	Apparel Placement - Volleyball
32	Apparel Placement - Golf
33	Apparel Placement - Baseball/Softball
34	Apparel Placement - Tennis
35	Apparel Placement - Swimming & Diving
36	Apparel Placement - Cross Country/Track & Field
37	Apparel Placement - Wrestling
38	Apparel Placement - Lacrosse
39	Apparel Placement - Bowling
40	GLVCSN Graphics Standards

GREAT LAKES VALLEY CONFERENCE BRAND STANDARDS

TABLE OF CONTENTS

These guidelines are intended to help anyone who is authorized by the Great Lakes Valley Conference to use the GLVC logo in accordance with the guidelines outlined in this manual.

The intent of these guidelines is to create a clear understanding of how the GLVC logo is used in a variety of media and applications.

All digital artwork is available from the GLVC.

Please contact:

Lindsey Williams, Assistant Commissioner
lindsey@glvc-sports.org

201 S. Capitol Ave., Suite 560
Indianapolis, IN 46225
(317) 237-2105







GLVC



Black outline is shown to resemble grass, as all
GLVC stencils should be painted white.

SECONDARY LOGO - WORDMARK (SCHOOL-SPECIFIC)



Official Mark
PMS 294 Blue
PMS 364 Green
Black



Drury University
PMS 186 Red
Black
Cool Grey 6



University of Illinois Springfield
PMS 289 Navy
PMS 7503 Gold



University of Indianapolis
PMS 201 Red
Cool Grey 6



Lewis University
PMS 200 Red
Black



Maryville University
PMS 193 Red
Black



McKendree University
PMS 2617 Purple
PMS 457 Gold



Missouri S&T
PMS 3435 Green
PMS 7502 Gold



University of Missouri-St. Louis
PMS 1807 Red
PMS 124 Gold



Quincy University
PMS 4695 Brown
PMS 102 Yellow



Rockhurst University
PMS 293 Blue
White



Southwest Baptist University
PMS 268 Purple
PMS 421 Grey



Truman State University
PMS 2607 Purple
PMS 2995 Light Blue



Upper Iowa University
PMS 281 Dark Blue
PMS 2905 Light Blue



William Jewell College
PMS 185 Red
Black



University of Central Missouri
PMS 186 Red
Black



Davenport University
PMS 485 Red
Black



Missouri Western State University
PMS 123 Yellow/Gold
Black



Newman University
Navy 2768 C
Red 704 C
Light Blue 542 C



GLVC SPORTS NETWORK PRIMARY LOGO - HEXAGON



Official Mark
Black
PMS 294 Blue
PMS 364 Green



Drury University
PMS 186 Red
Black
Cool Grey 6



University of Illinois Springfield
PMS 289 Navy
PMS 7503 Gold



University of Indianapolis
PMS 201 Red
Cool Grey 6



Lewis University
PMS 200 Red
Black



Maryville University
PMS 193 Red
Black



McKendree University
PMS 2617 Purple
PMS 457 Gold



Missouri S&T
PMS 7502 Gold
PMS 3435 Green
PMS 421 Silver



University of Missouri-St. Louis
PMS 1807 Red
PMS 124 Gold



Quincy University
PMS 4695 Brown
PMS 102 Yellow



Rockhurst University
PMS 293 Blue



Southwest Baptist University
PMS 268 Purple
PMS 421 Grey



Truman State University
PMS 2607 Purple
PMS 2995 Light Blue



Upper Iowa University
PMS 281 Dark Blue
PMS 2905 Light Blue



William Jewell College
PMS 185 Red
Black



University of Central Missouri
PMS 186 Red
Black



Davenport University
PMS 485 Red
Black



Missouri Western State University
PMS 123 Yellow/Gold
Black



Newman University
Navy 2768 C
Red 704 C
Light Blue 542 C

This mark is to be used as the primary mark for the GLVC Sports Network when space allows.

GLVC SPORTS NETWORK PRIMARY LOGO - HORIZONTAL



Official Mark
PMS 294 Blue
PMS 364 Green
Black



Drury University
PMS 186 Red
Black
Cool Grey 6



University of Illinois Springfield
PMS 289 Navy
PMS 7503 Gold



University of Indianapolis
PMS 201 Red
Cool Grey 6



Lewis University
PMS 200 Red
Black



Maryville University
PMS 193 Red
Black



McKendree University
PMS 2617 Purple
PMS 457 Gold



Missouri S&T
PMS 3435 Green
PMS 7502 Gold



University of Missouri-St. Louis
PMS 1807 Red
PMS 124 Gold



Quincy University
PMS 4695 Brown
PMS 102 Yellow



Rockhurst University
PMS 293 Blue
White



Southwest Baptist University
PMS 268 Purple
PMS 421 Grey



Truman State University
PMS 2607 Purple
PMS 2995 Light Blue



Upper Iowa University
PMS 281 Dark Blue
PMS 2905 Light Blue



William Jewell College
PMS 185 Red
Black



University of Central Missouri
PMS 186 Red
Black



Davenport University
PMS 485 Red
Black



Missouri Western State University
PMS 123 Yellow/Gold
Black



Newman University
Navy 2768 C
Red 704 C
Light Blue 542 C

This mark is to be used as the primary mark for the GLVC Sports Network when a horizontal logo is needed or for headers/footers on websites.

GLVC SPORTS NETWORK PRIMARY LOGO - SHORTHAND



Official Mark
PMS 294 Blue
PMS 364 Green
Black



Drury University
PMS 186 Red
Black
Cool Grey 6



University of Illinois Springfield
PMS 289 Navy
PMS 7503 Gold



University of Indianapolis
PMS 201 Red
Cool Grey 6



Lewis University
PMS 200 Red
Black



Maryville University
PMS 193 Red
Black



McKendree University
PMS 2617 Purple
PMS 457 Gold



Missouri S&T
PMS 3435 Green
PMS 7502 Gold



University of Missouri-St. Louis
PMS 1807 Red
PMS 124 Gold



Quincy University
PMS 4695 Brown
PMS 102 Yellow



Rockhurst University
PMS 293 Blue
White



Southwest Baptist University
PMS 268 Purple
PMS 421 Grey



Truman State University
PMS 2607 Purple
PMS 2995 Light Blue



Upper Iowa University
PMS 281 Dark Blue
PMS 2905 Light Blue



William Jewell College
PMS 185 Red
Black



University of Central Missouri
PMS 186 Red
Black



Davenport University
PMS 485 Red
Black



Missouri Western State University
PMS 123 Yellow/Gold
Black



Newman University
Navy 2768 C
Red 704 C
Light Blue 542 C

This mark is to be used as the secondary mark for the GLVC Sports Network for condensed spaces, such as weekly notes, mic flags, etc.

GLVC FULL-TIME MEMBER INSTITUTION LOGOS/COLORS



Drury University Panthers
PMS 186 Red | Black | Cool Grey 6



University of Illinois Springfield Prairie Stars
PMS 289 Navy | PMS 7503 Gold



University of Indianapolis Greyhounds
PMS 201 Red | Cool Grey 6



Lewis University Flyers
PMS 200 Red | Black



Maryville University Saints
PMS 193 Red | Black



McKendree University Bearcats
PMS 2617 Purple | PMS 457 Gold



Missouri University of Science & Technology Miners
PMS 3435 Green | PMS 7502 Gold | PMS 421 Silver



University of Missouri-St. Louis Tritons
PMS 1807 Red | PMS 124 Gold



Quincy University Hawks
PMS 4695 Dark Brown | PMS 102 Yellow



Rockhurst University Hawks
PMS 293 Blue



Southwest Baptist University Bearcats
PMS 268 Purple | PMS 421 Grey



Truman State University Bulldogs
PMS 2607 Purple | PMS 2995 Light Blue



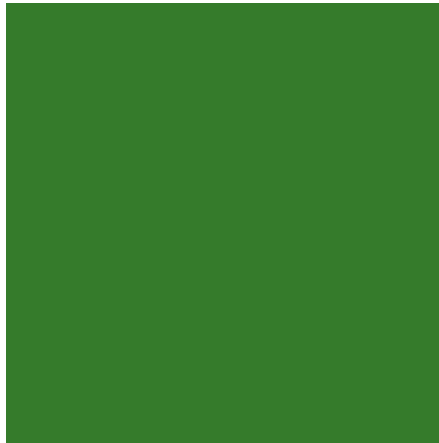
Upper Iowa University Peacocks
PMS 281c Dark Blue | 2905u Light Blue



William Jewell College Cardinals
PMS 185 Red | Black



Pantone 294 C
Hex Alt #006699



Pantone 364 C
Hex Alt #336633



Black
C: 0 M: 0 Y: 0 K: 100
Hex Alt #000000

Gotham Bold

ABCDEFGHIJKLMNOPQRSTUVWXYZ

abcdefghijklmnopqrstuvwxyz

0123456789

(For use in headlines, signage, or emphasis)

Gotham Book

ABCDEFGHIJKLMNOPQRSTUVWXYZ

abcdefghijklmnopqrstuvwxyz

0123456789

(For use in sub-headlines or text)

NOTE: The GLVC originally adopted the ITC Stone font family in the 2010 redesign of the Conference logo. The ITC Stone remains in the Conference logo and wordmark, however it is no longer the font of choice for the league's promotional efforts, including website, signage, trophies, manuals, etc.



This version of the logo should not be used in print or on the web at less than 1.5" or 108 pixels tall.



.25" white space around each edge;
Do not place any elements within the yellow border.



All applications of the GLVC primary logo/wordmark, GLVC sport logo, and GLVC Sports Network mark on a dark-colored background, website, or apparel item MUST INCLUDE a thin 2-point WHITE stroke line around the perimeter of the logo.



Football

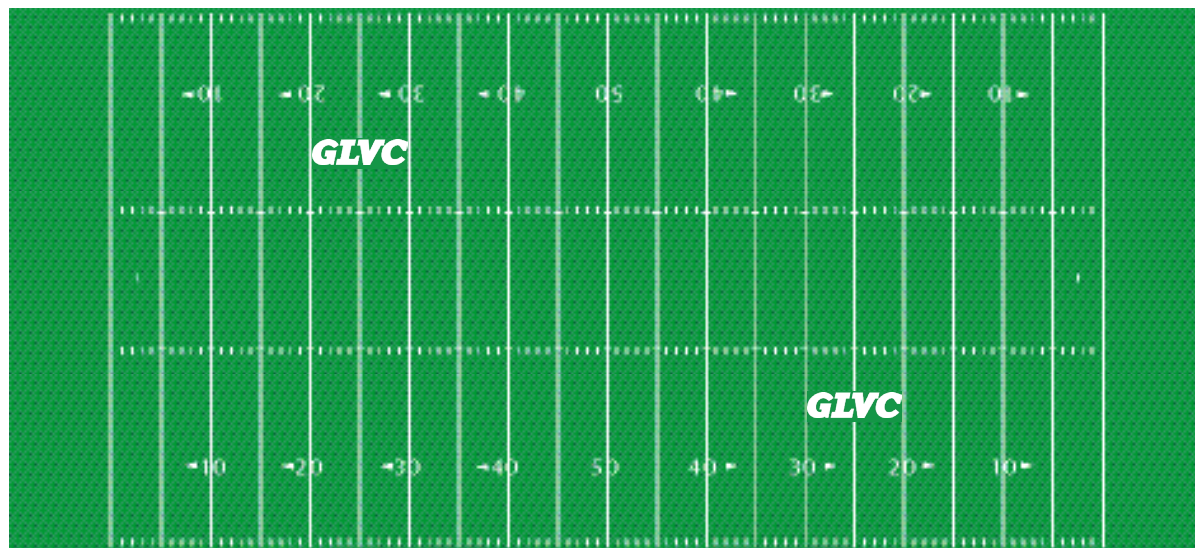
The GLVC logo shall appear centered on both 25 yard lines.

The logo shall be positioned between the far hash marks and field numbers and spaced with equal distance above and below, as shown.

Both marks must face in the same direction and toward cameras.

The dimensions of the GLVC logo field stencil are 6' tall x 23' wide.

The no-layered GLVC is to be used in white.





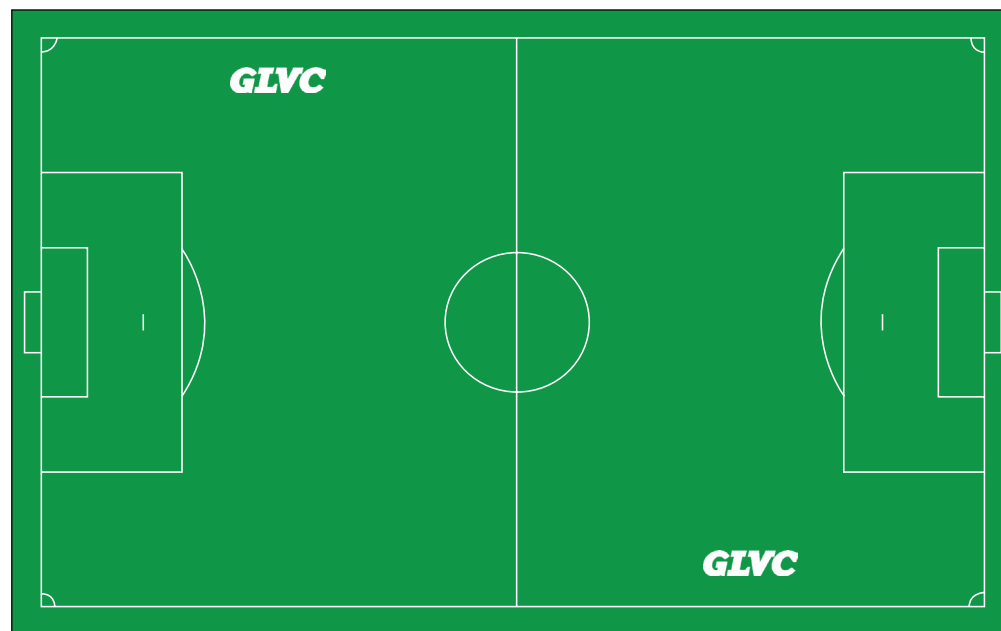
Soccer

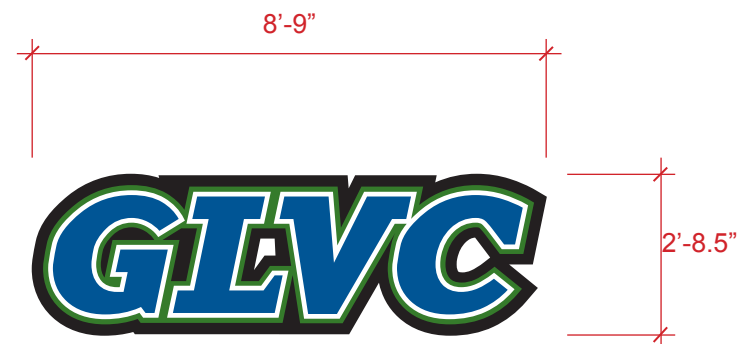
The GLVC logo shall be placed equidistant from midfield to the goal line, on both sides of the field, or at the same location as football field standards if this is a multi-sport surface.

Both marks must face in the same direction and toward cameras.

The dimensions of the GLVC logo field stencil are 6' tall x 23' wide.

The no-layered GLVC is to be used in white.





Volleyball

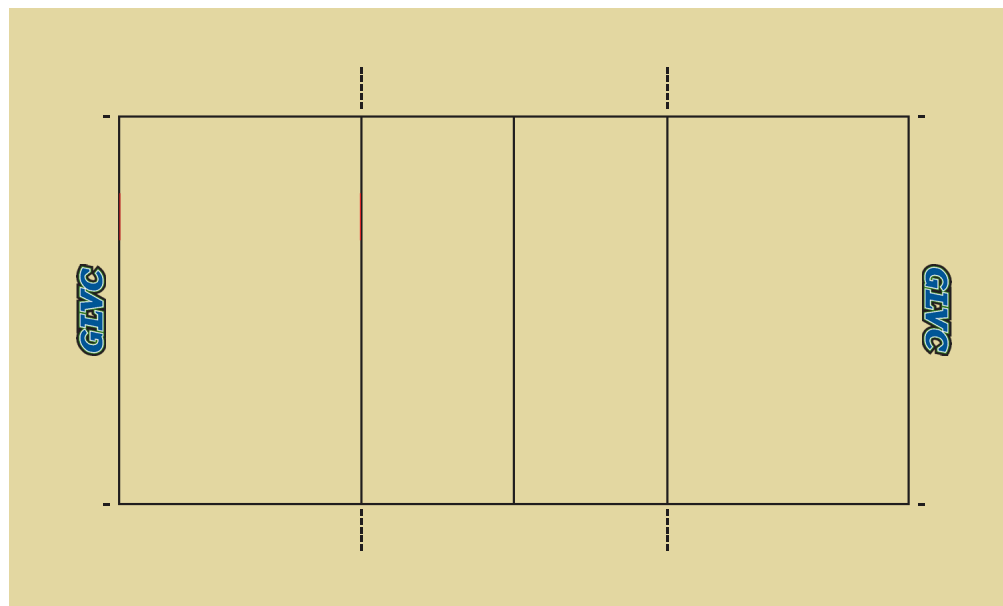
The GLVC logo shall appear centered on the outside of both end lines.

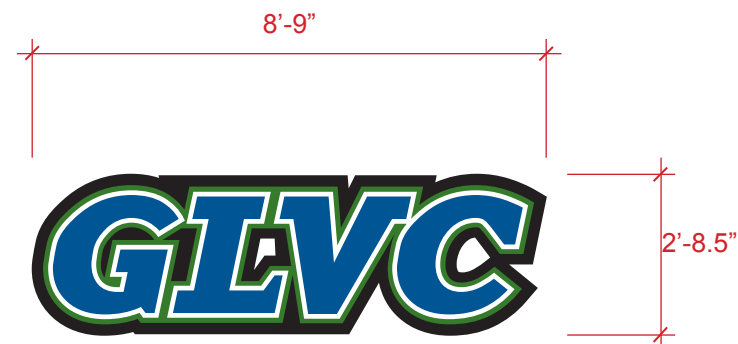
For multi-sport surfaces, this mark will adhere to the basketball standards and be the exact location required for basketball.

Both marks must face in toward the halfcourt line.

The suggested dimensions of the GLVC logo are 2'8.5" tall x 8'9" wide.

The school-specific layered GLVC wordmark is to be used in full color. Variations to the mark must be approved by the Conference office.





Basketball

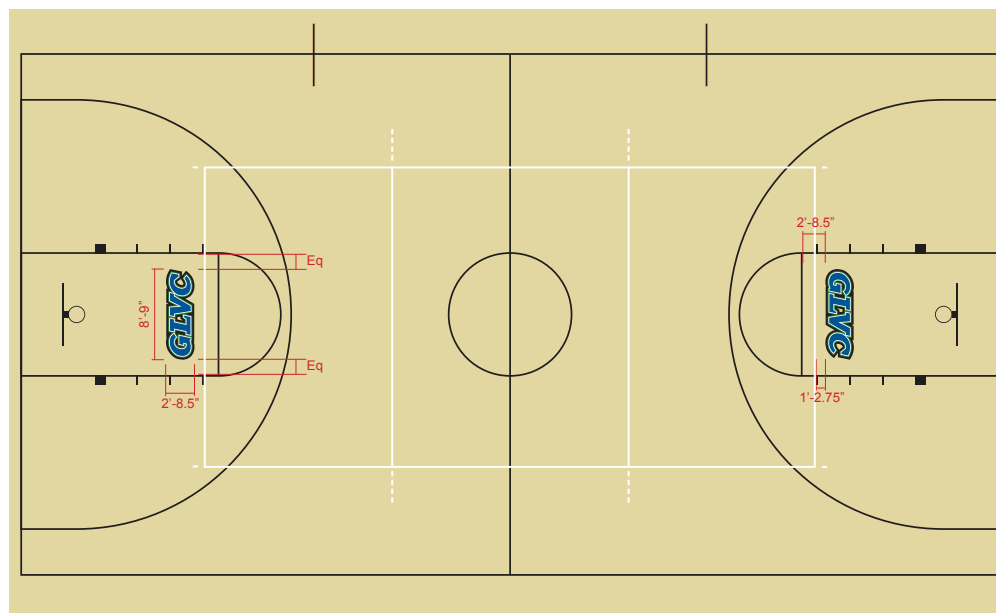
The GLVC logo shall appear centered in the lane just above the free-throw line.

For multi-sport surfaces, this mark will adhere to the volleyball standards and be the exact location required for basketball.

Both marks must face in toward the halfcourt line.

The suggested dimensions of the GLVC logo are 2'8.5" tall x 8'9" wide.

The school-specific layered GLVC wordmark is to be used in full color. Variations to the mark must be approved by the Conference office.





Baseball/Softball

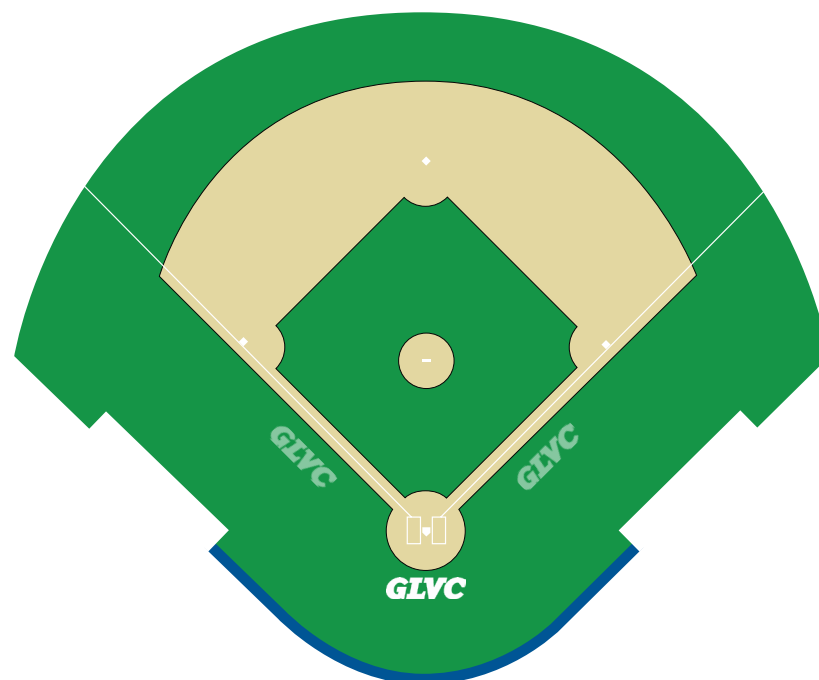
The GLVC logo shall appear in the grass behind home plate, should there be enough space.

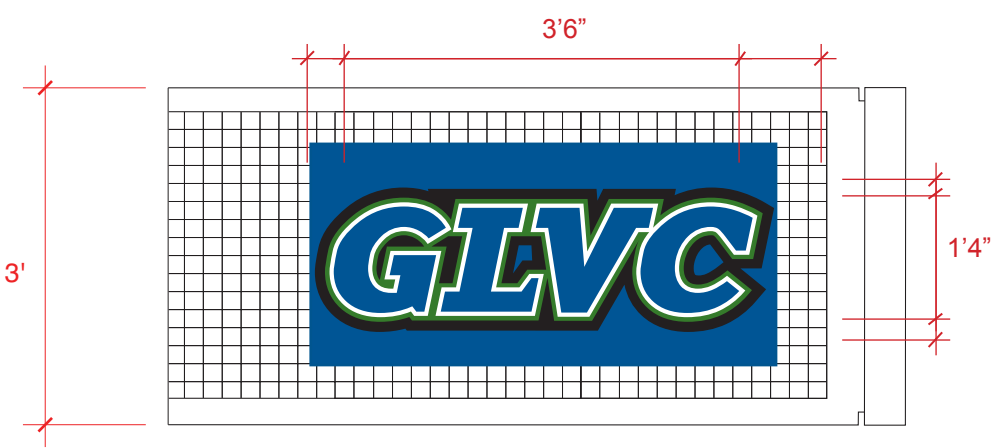
The alternate placement is along the baselines in foul territory.

The dimensions of the GLVC logo field stencil are 6' tall x 23' wide.

The no-layered GLVC is to be used in white.

Additional options will be considered by the Conference office.



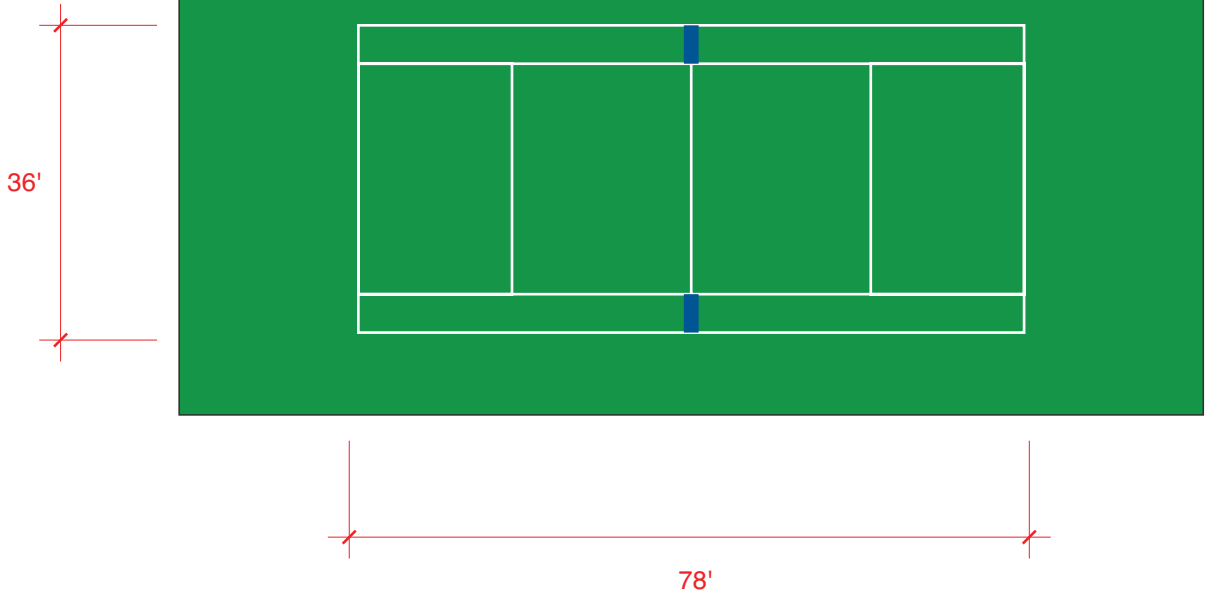


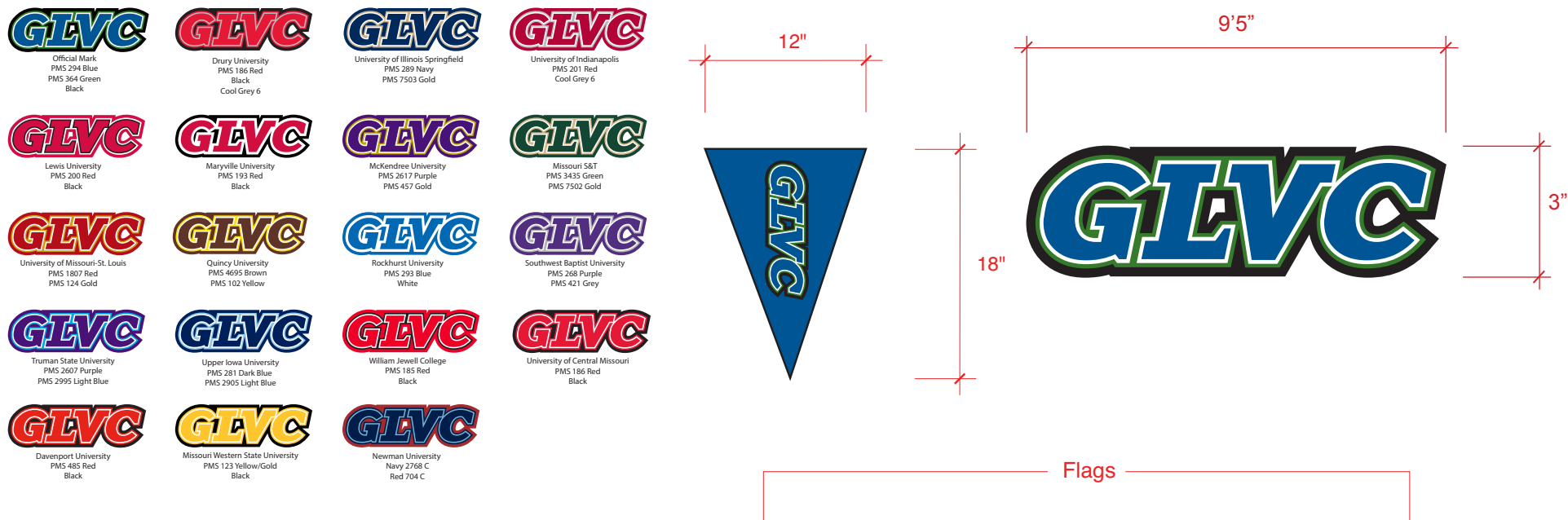
Section of Net in Doubles Alley

Tennis

Should any school wish to brand its tennis courts, the GLVC prefers signage on the section of the net in the Doubles Alley.

The GLVC mark will be the school-specific wordmark and measure 3'6" wide x 1'4" tall.

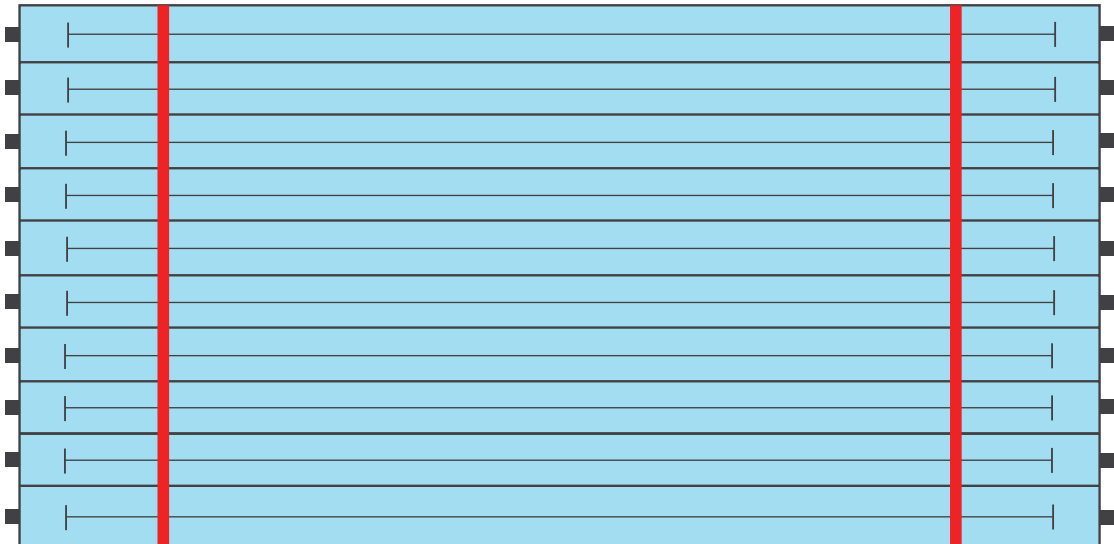




Swimming & Diving

Should any school wish to brand its campus swimming pools, the GLVC prefers signage on the backstroke lane flags.

The GLVC mark will be the school-specific wordmark and measure 9'5" wide x 3" tall.





Cross Country

Should any school wish to brand its cross country course, the GLVC prefers signage at the finish line, mirroring the look of the NCAA Championships.

The dimensions of the GLVC logo field stencil are 6' tall x 23' wide.

The no-layered GLVC is to be used in white, as shown here.



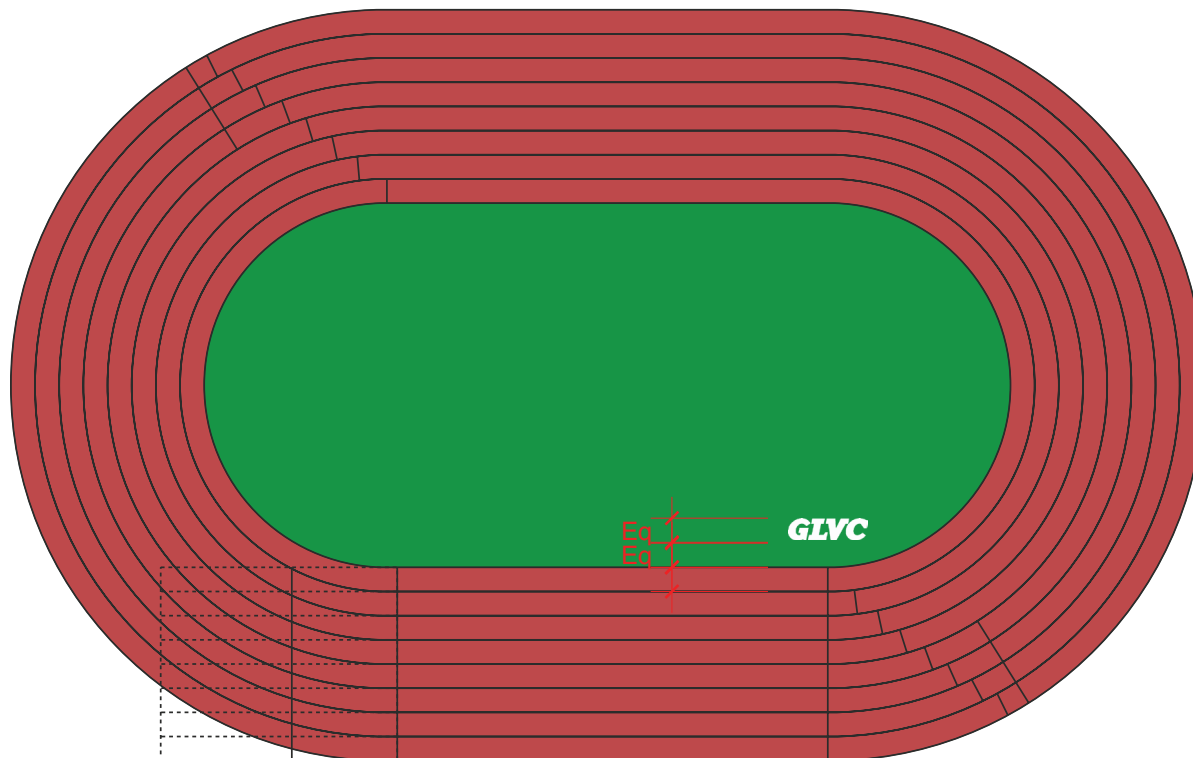


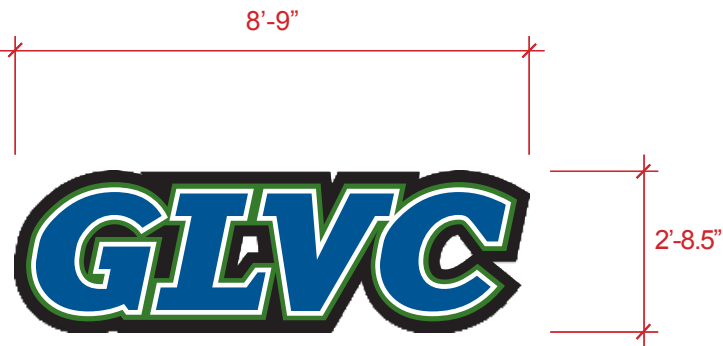
Track & Field

Should any school wish to brand its track and field venue, the GLVC prefers signage at the finish line, mirroring the look of the NCAA Championships.

The dimensions of the GLVC logo field stencil are 6' tall x 23' wide.

The no-layered GLVC is to be used in white.

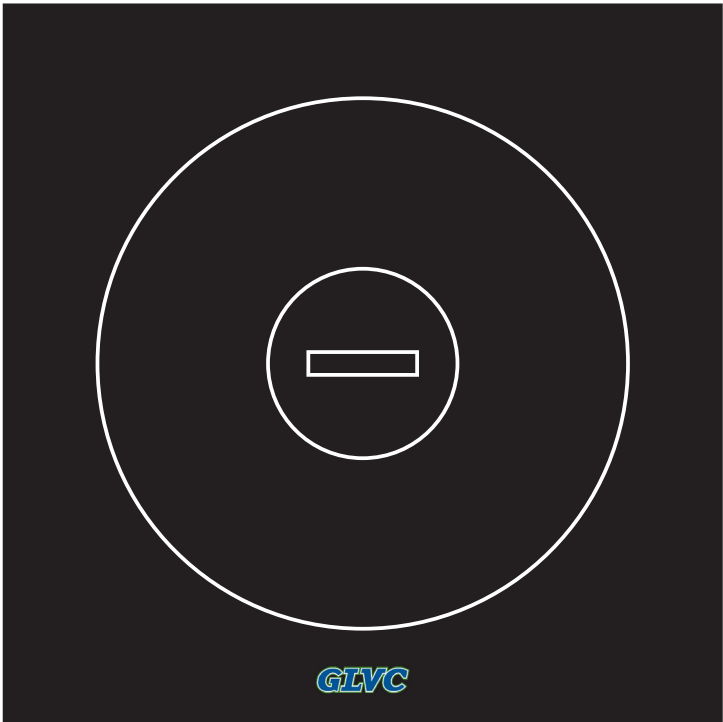




Wrestling

The GLVC logo shall be placed at the bottom of the exterior circle and facing the camera position.

The dimensions of the GLVC logo field stencil are 6' tall x 23' wide.





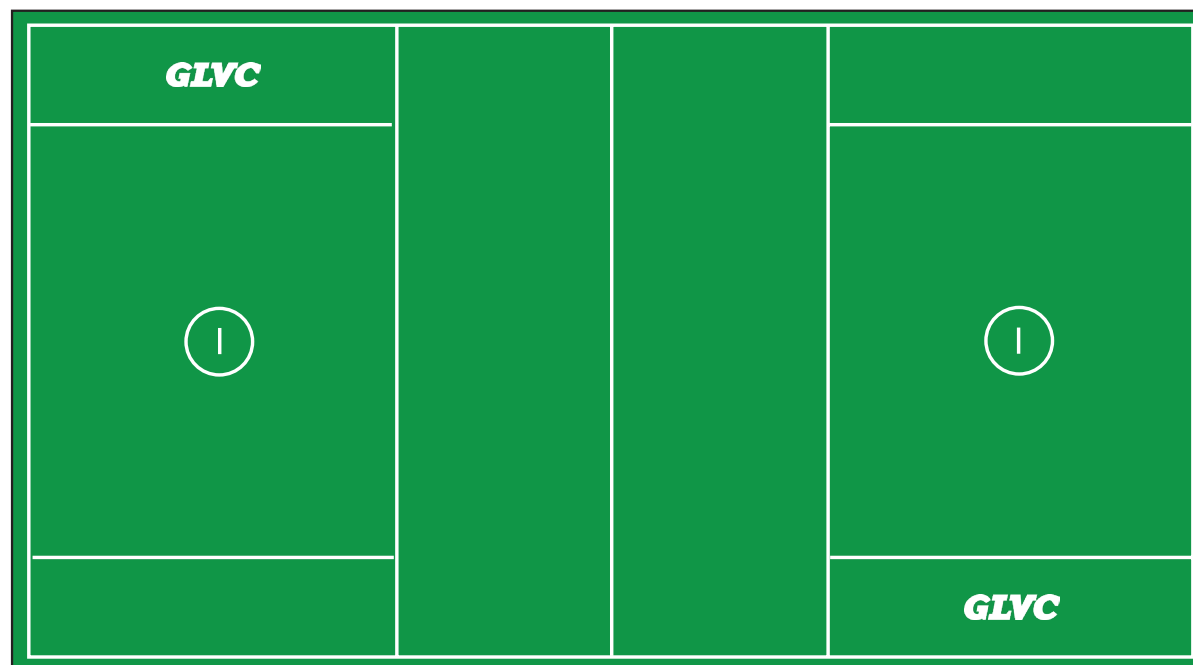
Lacrosse

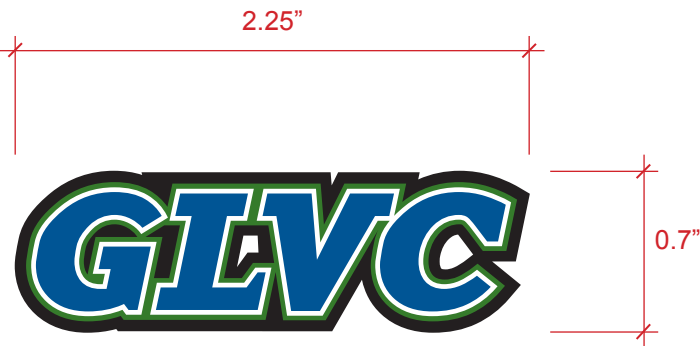
The GLVC logo shall be placed equidistant from the lines, on both sides of the field, or at the same location as football/soccer field standards if this is a multi-sport surface.

Both marks must face in the same direction and toward cameras.

The dimensions of the GLVC logo field stencil are 6' tall x 23' wide.

The no-layered GLVC is to be used in white.





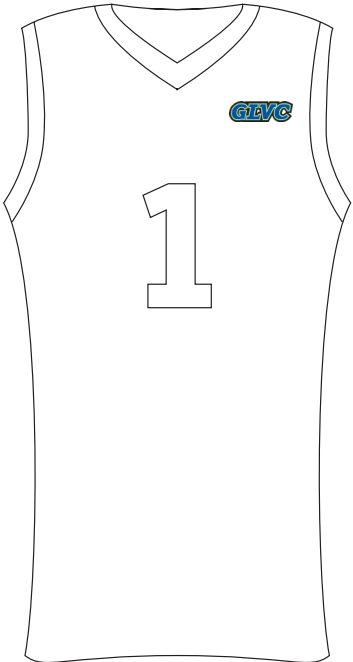
Basketball

The school-specific GLVC logo shall be placed on the front left chest of all men's and women's basketball jerseys.

Exact placement may vary slightly based on jersey style, but the size and style of the logo should appear as shown.



Men's Basketball Jersey



Women's Basketball Jersey



Football

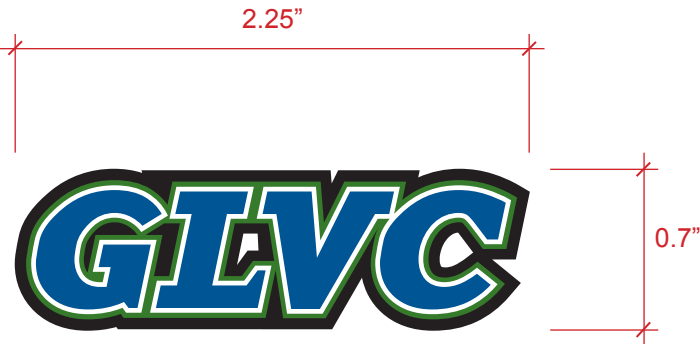
The school-specific GLVC logo shall be placed on the front right chest of all football uniforms.

Placement of the school-specific GLVC logo on the back left of the helmet is optional.

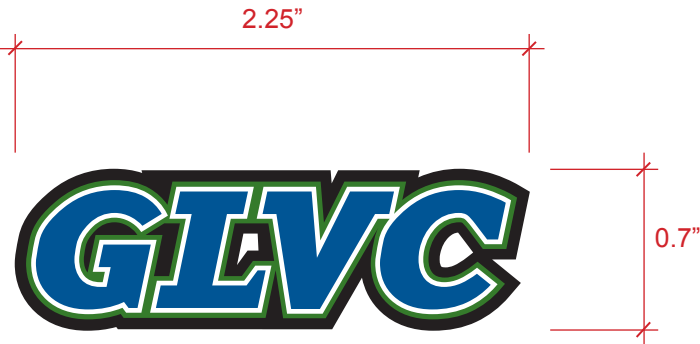
Exact placement may vary slightly based on jersey style, but the size and style of the logo should appear as shown.



Football Helmet
(Logo size may vary)



Football Jersey

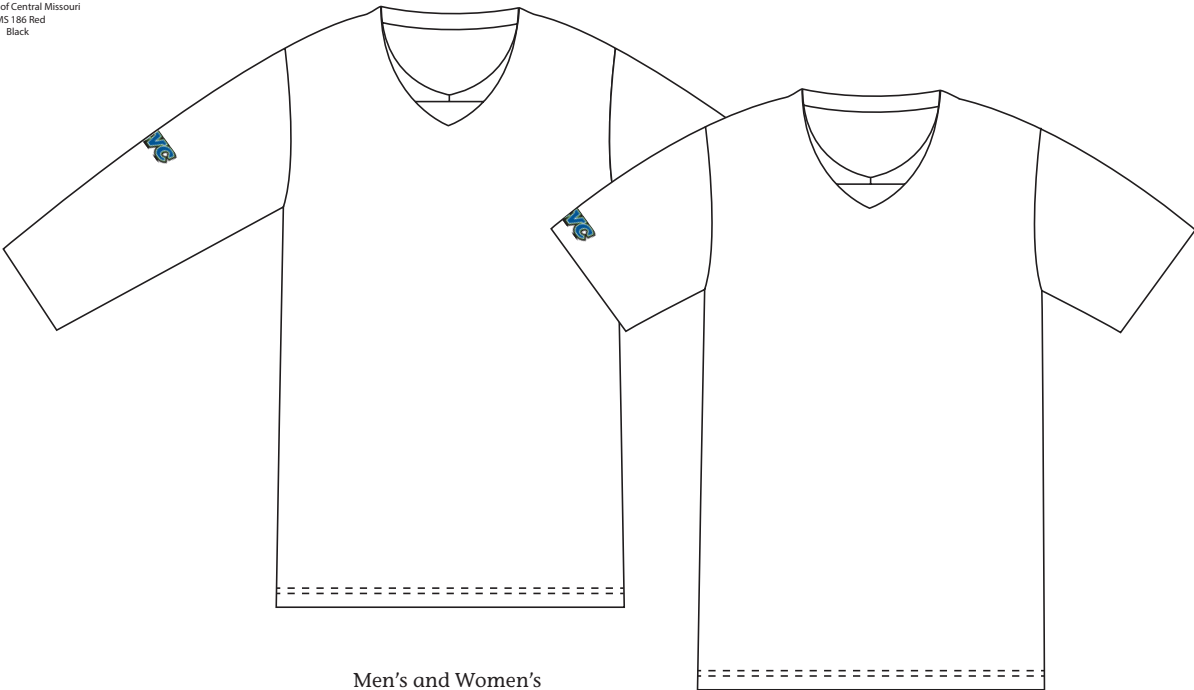


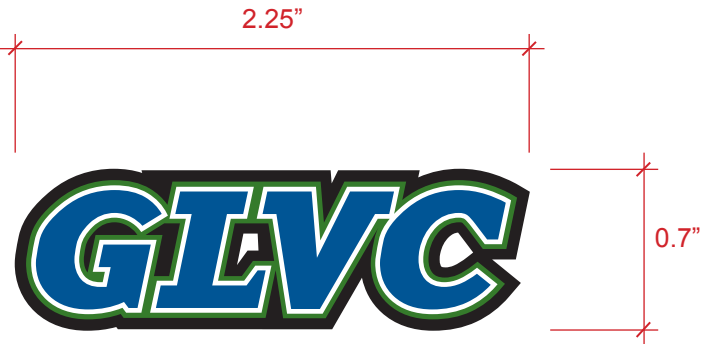
Soccer

The school-specific GLVC logo shall be placed on the right sleeve of all men's and women's soccer jerseys.

Placement on the right sleeve should be consistent on short and long sleeve jerseys, where the school-specific GLVC logo appears just above the short sleeve hem.

Exact placement may vary slightly based on jersey style, but the size and style of the logo should appear as shown.





Volleyball

The school-specific GLVC logo shall be placed on the right sleeve of all volleyball jerseys. Placement on the right sleeve should be consistent on short and long sleeve jerseys, where the school-specific GLVC logo appears just above the short sleeve hem.

For those short sleeve jerseys that just come off the shoulder, the school-specific GLVC logo shall be placed on the back of the jersey, just below the neckline.

Exact placement may vary slightly based on jersey style, but the size and style of the logo should appear as shown.

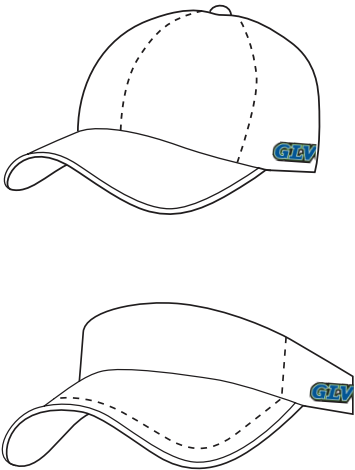
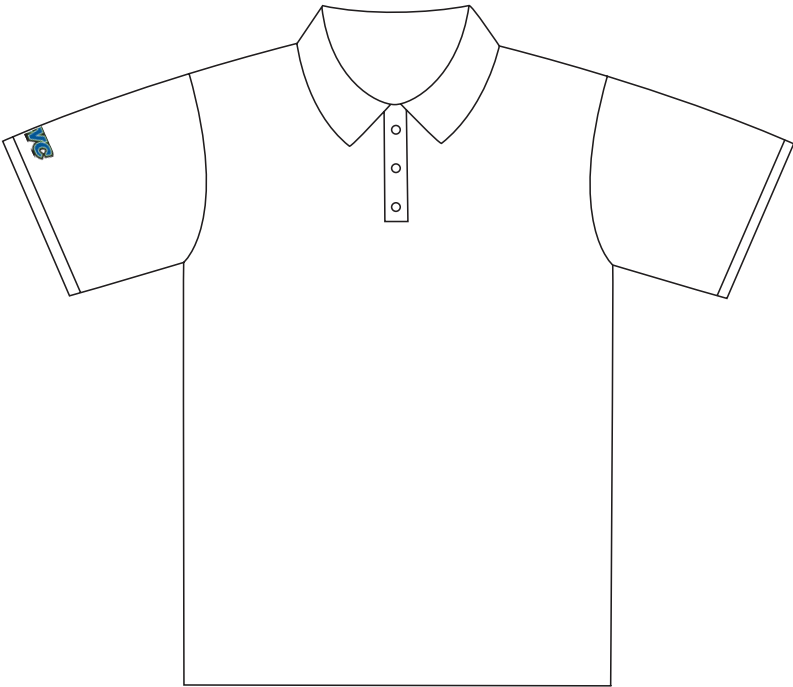
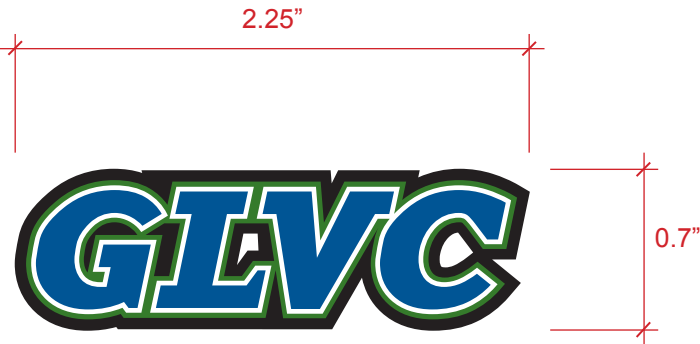




Golf

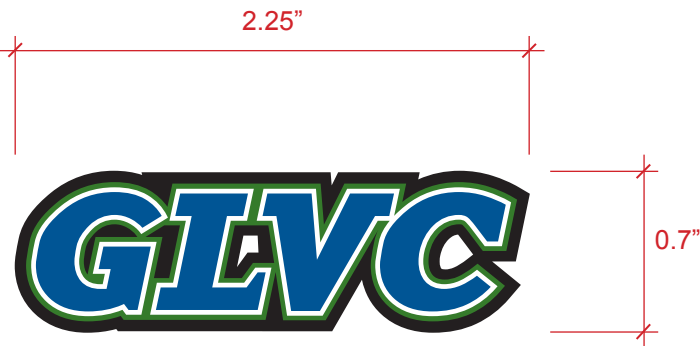
The school-specific GLVC logo shall be placed on the right sleeve of all men’s and women’s golf shirts just above the hem. The school-specific GLVC logo shall be placed opposite of the manufacturer’s logo on all hats. Placement on hat is optional.

Exact placement may vary slightly based on shirt style, but the size and style of the logo should appear as shown.



Hat
(Optional, logo size may vary)

Men’s and Women’s Golf Shirt

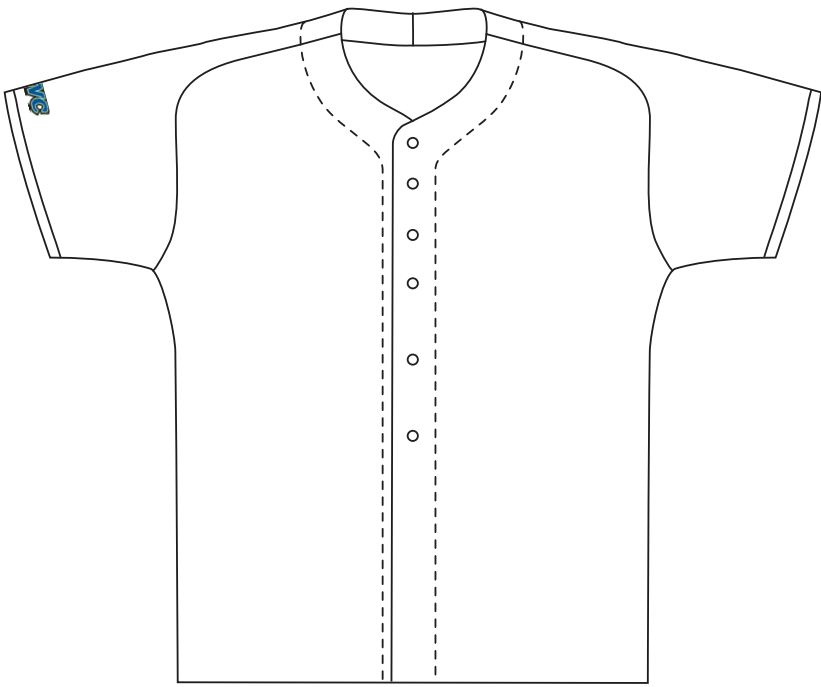
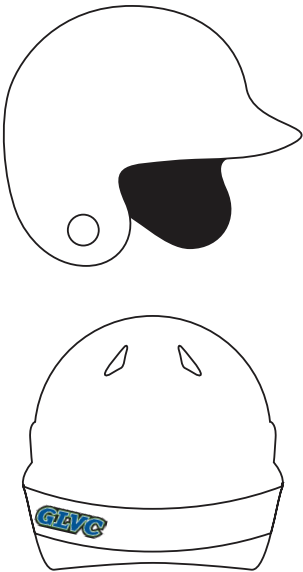


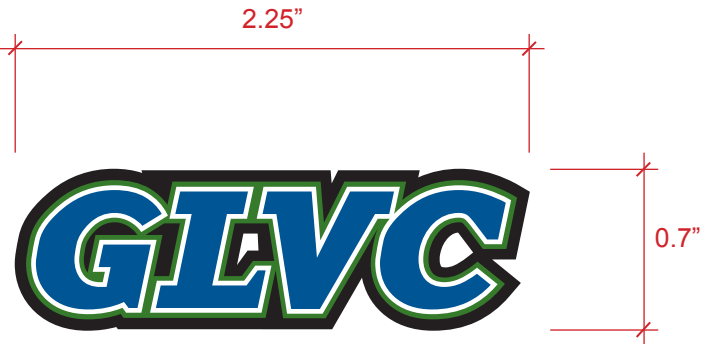
Baseball/Softball

The school-specific GLVC logo shall be placed on the right sleeve of all baseball/softball jerseys just above the hem.

Placement of the school-specific GLVC logo on the back left of the helmet is optional.

Exact placement may vary slightly based on jersey style, but the size and style of the logo should appear as shown.

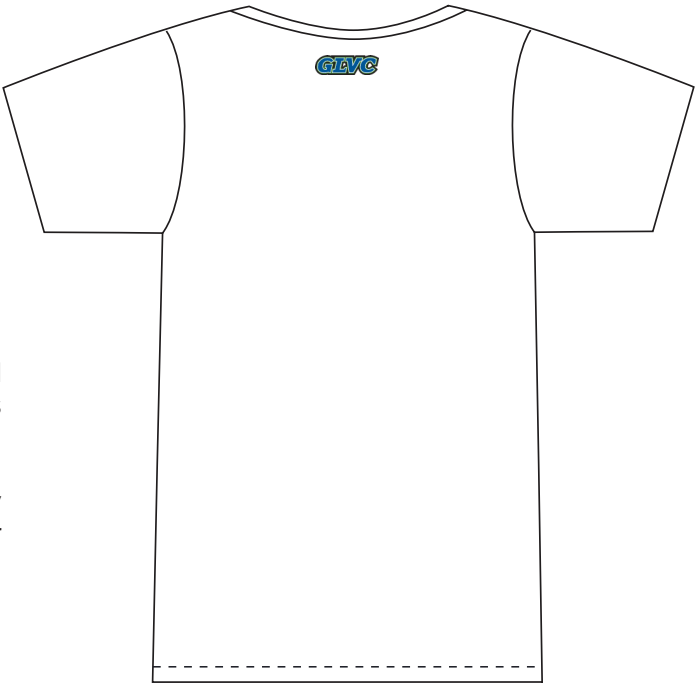




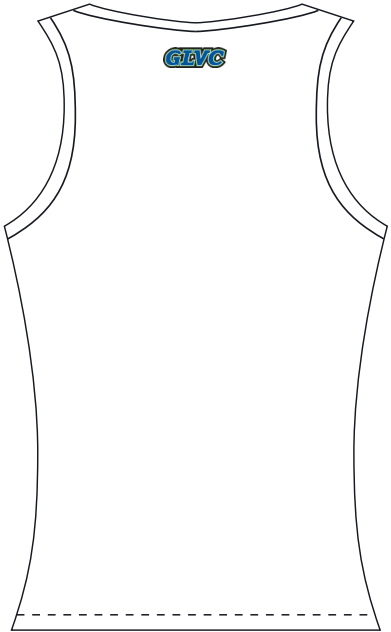
Tennis

The school-specific GLVC logo shall be placed centered below the neck on the back of all men’s and women’s tennis uniforms/T-shirts.

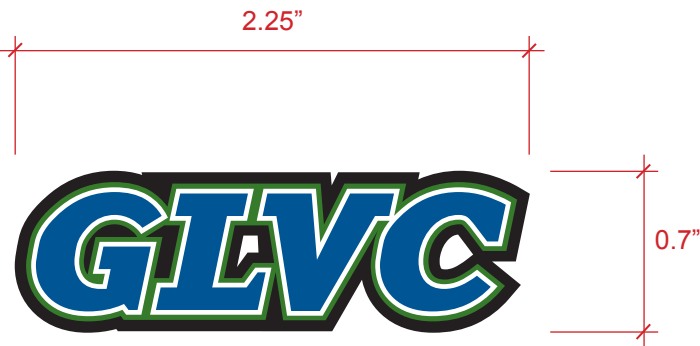
Exact placement may vary slightly based on jersey style, but the size and style of the logo should appear as shown.



Back of
Men’s Tennis Jersey



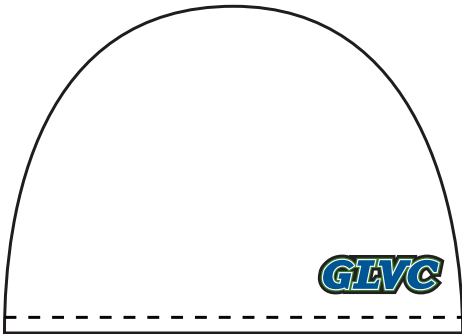
Back of
Women’s Tennis Jersey



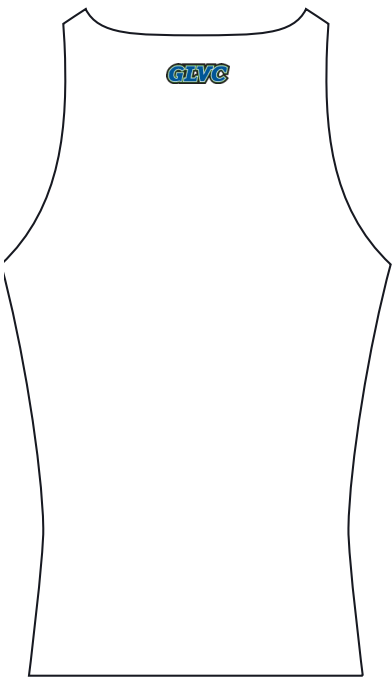
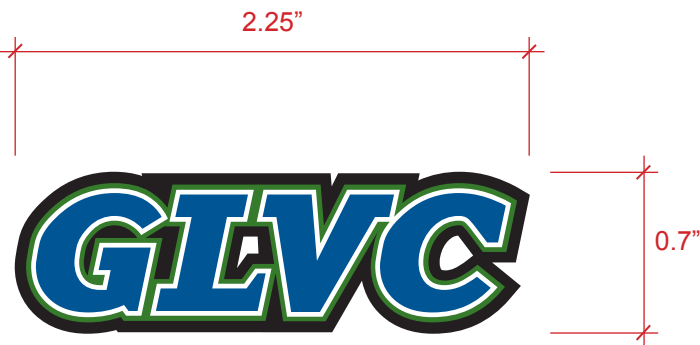
Swimming & Diving

The school-specific GLVC logo shall be placed right of center on the front of all men’s and women’s swim caps, or in the corresponding location on the back of the cap if a school logo is placed on the front.

Exact placement may vary slightly based on jersey style, but the size and style of the logo should appear as shown.



Men’s and Women’s Swim Cap

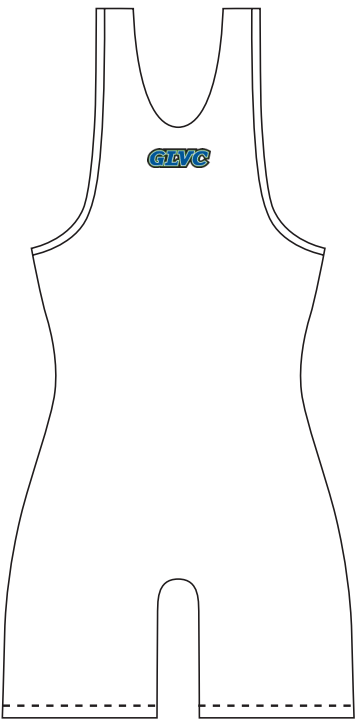
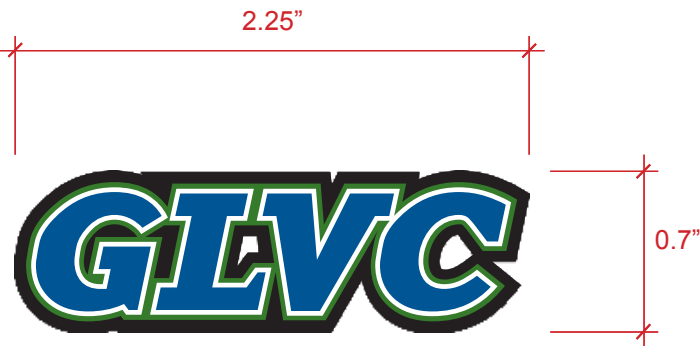


Back of
Men's and Women's
Sleeveless Track and Field Jersey

Track & Field/Cross Country

The school-specific GLVC logo shall be placed centered below the neck on the back of all men's and women's cross country and track & field jerseys/competition shirts.

Exact placement may vary slightly based on jersey style, but the size and style of the logo should appear as shown.



Back of
Wrestling Singlet

Wrestling

The school-specific GLVC logo shall be placed centered below the neck on the back of all singlets.

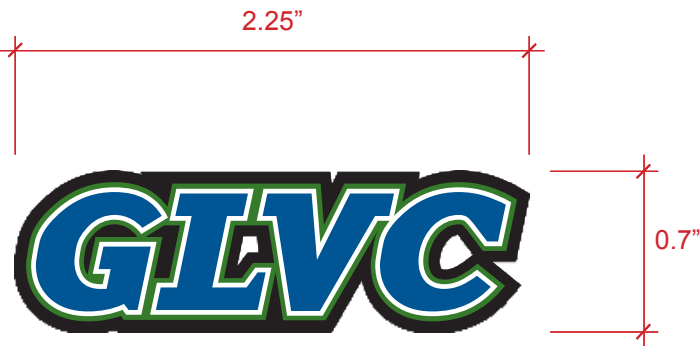
Exact placement may vary slightly based on jersey style, but the size and style of the logo should appear as shown.



Lacrosse

The school-specific GLVC logo shall be placed on the front right chest of all lacrosse jerseys.

Exact placement may vary slightly based on jersey style, but the size and style of the logo should appear as shown.



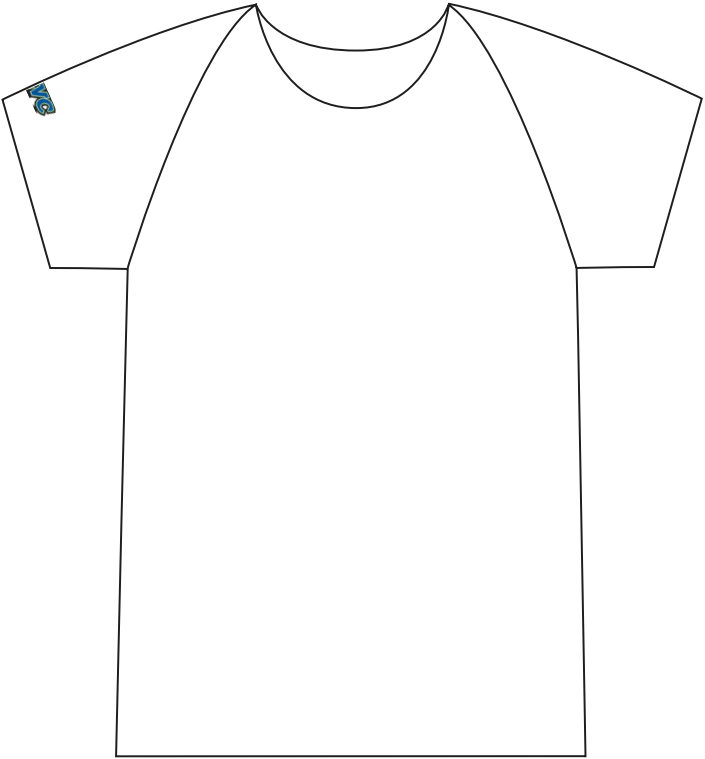
Lacrosse Jersey



Bowling

The school-specific GLVC logo shall be placed on the sleeve opposite of number on all bowling jerseys, although it is preferred on the right sleeve as shown.

Exact placement may vary slightly based on shirt style, but the size and style of the logo should appear as shown.



Official Network Name(s)

The official name shall be known as the **GLVC Sports Network**. The only other approved second reference is **GLVCSN**. Great Lakes Valley Conference Sports Network should **never** be used.

Official Network Logos

Each member institution has been provided the following three logos in its school-specific colors, as shown on pages 10-12.



The GLVCSN “hexagon” is the primary logo to be used on all first references when adequate space is provided.



The GLVCSN “horizontal” is the “secondary” primary mark, meaning it should be used as a second reference to the “hexagon” but used first when a horizontal space is provided.



The GLVCSN “shorthand” is the alternate logo to be used when limited space is provided, such as game notes, web banners, horizontal mic flags, etc.

School Identification Formats

When a full-size graphic is used, the full school name with mascot should be used (i.e., Welcome/University of Missouri-St. Louis Tritons vs. Drury University Panthers/Location on graphic). A medium-sized graphic should contain the shorthand school name (i.e., Missouri-St. Louis vs. Drury). A smaller-sized graphic, like a condensed scoreboard, should contain GLVC-approved abbreviation codes (i.e., UMSL vs. DU).

Full Name w/ Mascot	Shorthand	Code
Drury University Panthers	Drury	DU
University of Illinois Springfield Prairie Stars	Illinois Springfield	UIS
University of Indianapolis Greyhounds	Indianapolis	UINDY
Lewis University Flyers	Lewis	LEWIS
Maryville University Saints	Maryville	MU
McKendree University Bearcats	McKendree	MCK
Missouri S&T Miners	Missouri S&T	S&T
University of Missouri-St. Louis Tritons	Missouri-St. Louis	UMSL
Quincy University Hawks	Quincy	QU
Rockhurst University Hawks	Rockhurst	RU
Southwest Baptist University Bearcats	Southwest Baptist	SBU
Truman State University Bulldogs	Truman	TSU
Upper Iowa University Peacocks	Upper Iowa	UIU
William Jewell College Cardinals	William Jewell	WJC

Scoreboard Team Colors

When using the Hudl Production Truck scoreboards, regardless of sport, the following school background colors should be entered:

Drury	#e2383f	All GLVC wordmark (far-left on scoreboard) and Sponsor (far-right) spaces should be left as #666.
Illinois Springfield	#002a5c	
Indianapolis	#a80532	These are the recommended colors, as tested by the GLVC. Should a school opt to change its background color, please contact the GLVC first.
Lewis	#C22033	
Maryville	#c91235	
McKendree	#490d67	
Missouri S&T	#005030	
Missouri-St. Louis	#b01019	
Quincy	#432014	
Rockhurst	#0054af	
Southwest Baptist	#4e2683	
Truman State	#510c76	
Upper Iowa	#001f60	
William Jewell	#ea1c2d	

GLVCSN Hexagon Watermark

Each school **must** use its school-specific GLVCSN hexagon logo as the upper-right watermark for the duration of every streamed event.

GLVCSN Loops

Each school will be required to open and close every streamed event with its 30-second, GLVCSN school-specific loop. **Do not** play the loop at any other point during the broadcast.

GLVCSN Poster ID Graphics

Each school will retain the poster ID graphic designed by the Conference office for all streamed events. **Do not make changes to it.** These graphics ensure a consistent look on GLVCSN.com and when all events are displayed on mobile and OTT platforms.

Website/Twitter/Mobile/OTT

The official GLVC Sports Network website is GLVCSN.com, while the official Twitter handle is @GLVCSN. GLVCSN mobile apps are currently available on iOS and Android. GLVCSN over-the-top (OTT) apps are currently available on four platforms: Roku, Apple TV, Amazon Fire TV, and Android TV.

Sponsorship Placement

Sponsorships sold by schools where logos are placed within the stream are not to infringe on any GLVC wordmark/watermark placements. Sponsor logos can be used on available scoreboard bumpouts after GLVC wordmark is used, or as watermarks in the top-left, bottom-left or bottom-right portions of the screen.

Event Titles

When creating a broadcast, event titles should always use the shorthand name of the school and list the home team first. Never use official/long name or mascot name (i.e., WSOC: Truman vs. Southwest Baptist).



Football

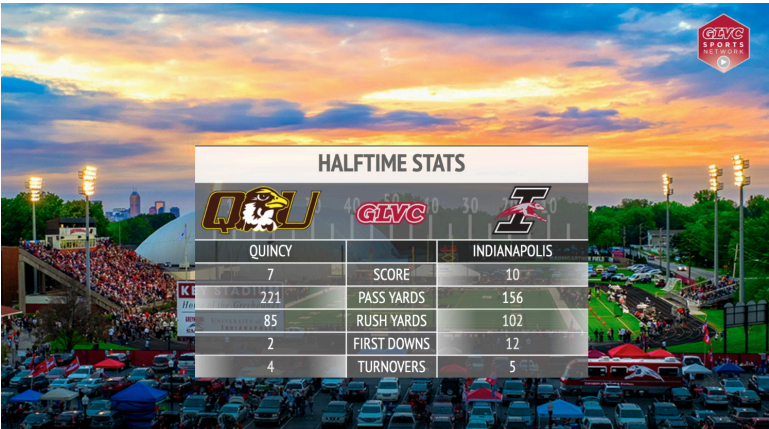
The **Game Info** graphic is shown top-left. GLVC wordmark or sponsor logo can be placed in the middle of graphic (recommended). Pop-up text is optional but recommended and can be customized as desired.

The **Starting Lineup** graphic is shown top-right. GLVC wordmark or sponsor logo can be placed in the bottom-right of graphic. Optional player images can be pulled directly from website rosters.



The **Breakboard** graphic is shown middle-left. Pop-up text is optional but recommended and can be customized as desired. Bump-out logos are optional, but left one should be used first.

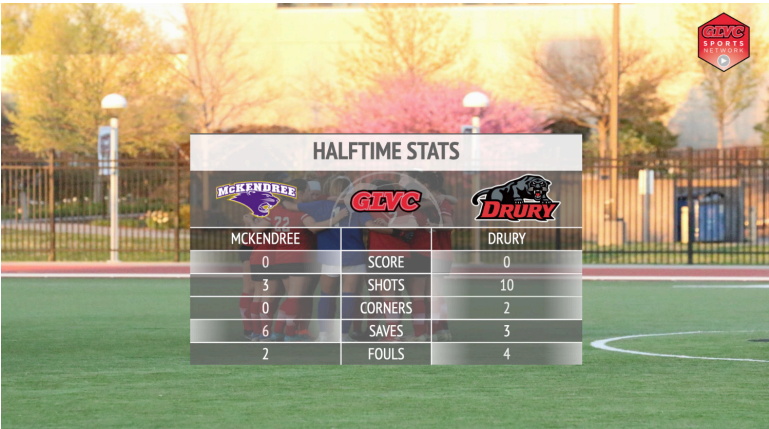
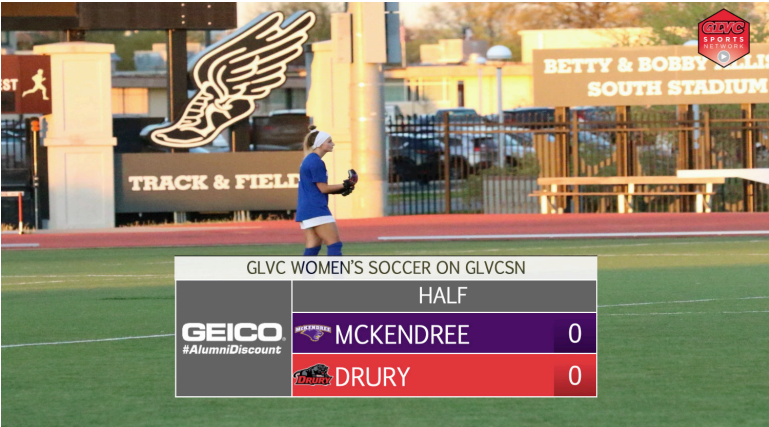
The **Scoreboard** graphic is shown middle-right. GLVC wordmark on left is mandatory. Pop-up text is optional but recommended and can be customized as desired. Sponsor logo (not shown) can also be added to right bump-out.



The **Stats** graphic is shown bottom-left. GLVC wordmark or sponsor logo can be placed in the middle of graphic. At least four stat categories are recommended. Check boxes for top stat.

Sponsor logos can also be displayed in **top-left watermark** location as shown bottom-right. **Image Overlays** work here, too.





Soccer

The **Game Info** graphic is shown top-left. GLVC wordmark or sponsor logo can be placed in the middle of graphic (recommended). Pop-up text is optional but recommended and can be customized as desired.

The **Starting Lineup** graphic is shown top-right. GLVC wordmark or sponsor logo can be placed in the bottom-right of graphic. Optional player images can be pulled directly from website rosters.

The **Breakboard** graphic is shown middle-left. Pop-up text is optional but recommended and can be customized as desired. Bump-out logos are optional, but left one should be used first.

The **Scoreboard** graphic is shown middle-right. GLVC wordmark is mandatory; right bump-out can be used for sponsor logo. Pop-up text (not shown) is optional but recommended and can be customized as desired.

The **Stats** graphic is shown bottom-left. GLVC wordmark or sponsor logo can be placed in the middle of graphic. At least four stat categories are recommended.

The **Substitution** graphic is shown bottom-right. This is "as is" and does not allow for additional elements.

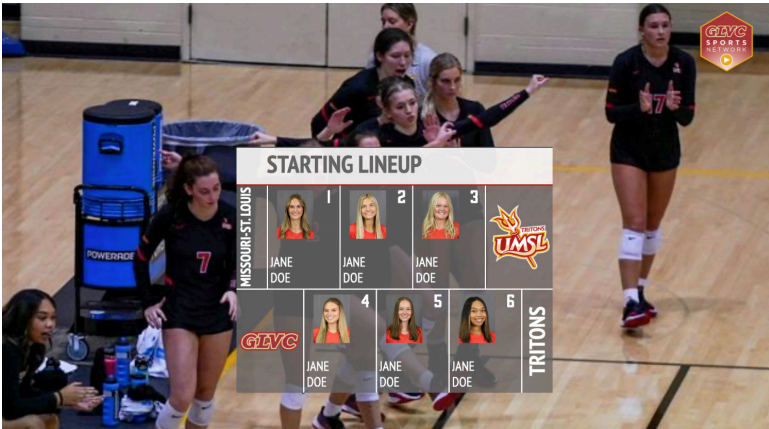




Volleyball

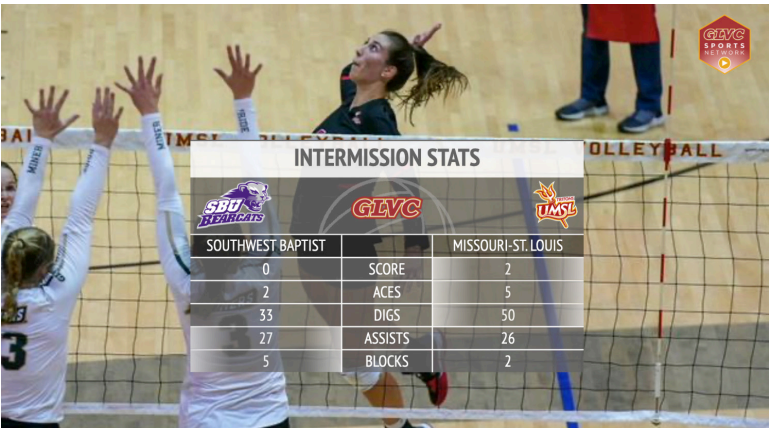
The **Game Info** graphic is shown top-left. GLVC wordmark or sponsor logo can be placed in the middle of graphic (recommended). Pop-up text is optional but recommended and can be customized as desired.

The **Starting Lineup** graphic is shown top-right. GLVC wordmark or sponsor logo can be placed in the bottom-left of graphic. Optional player images can be pulled directly from website rosters.



The **Breakboard** graphic is shown middle-left. Pop-up text is optional but recommended and can be customized as desired. Bump-out logos are optional, but left one should be used first.

The **Scoreboard** graphic is shown middle-right. Do not use GLVC wordmark in bump-out, as it does not fit well. Do not use GLVCSN hexagon in bump-out either, as that is redundant. Pop-up text is optional but recommended and can be customized as desired. Sponsor logo in bump-out is optional.



The **Stats** graphic is shown bottom-left. GLVC wordmark or sponsor logo can be placed in the middle of graphic. At least four stat categories are recommended.



Basketball

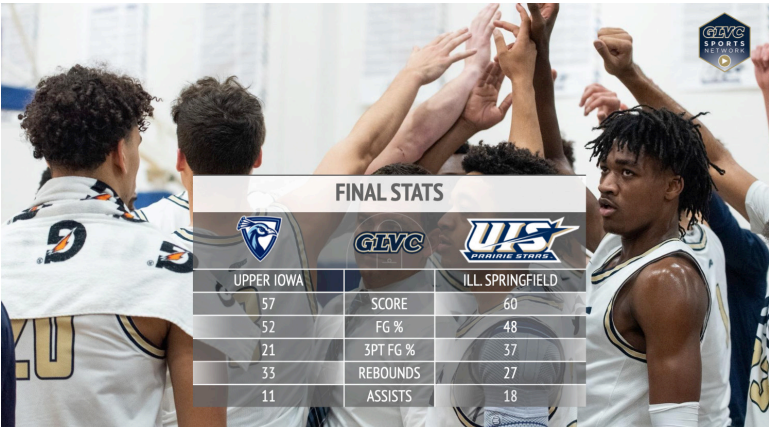
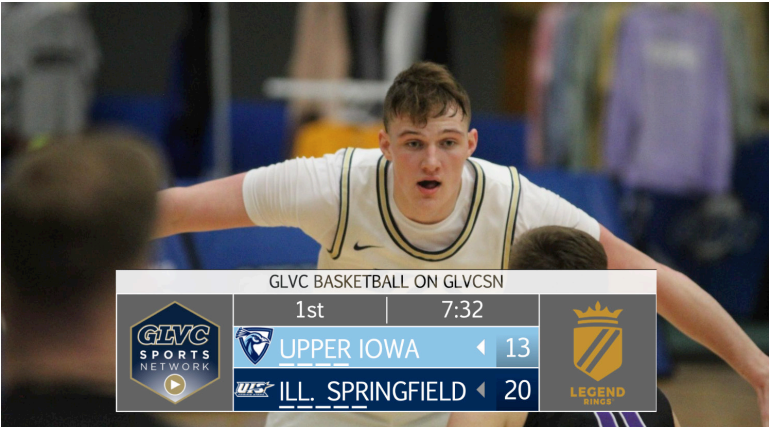
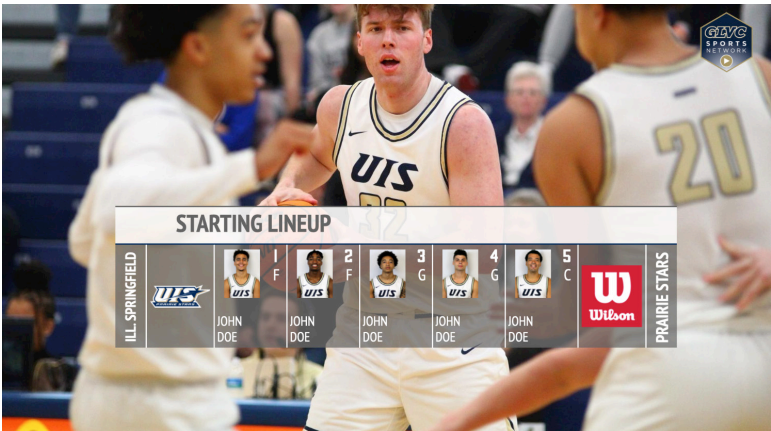
The **Game Info** graphic is shown top-left. GLVC wordmark or sponsor logo can be placed in the middle of graphic (recommended). Pop-up text is optional but recommended and can be customized as desired.

The **Starting Lineup** graphic is shown top-right. GLVC wordmark or sponsor logo can be placed in the right of graphic. Optional player images can be pulled directly from website rosters.

The **Breakboard** graphic is shown middle-left. Pop-up text is optional but recommended and can be customized as desired. Bump-out logos are optional, but left one should be used first.

The **Scoreboard** graphic is shown middle-right. GLVC wordmark in left bump-out is mandatory. Pop-up text (not shown) is optional but recommended and can be customized as desired. Sponsor logo in right bump-out is optional.

The **Stats** graphic is shown bottom-left. GLVC wordmark or sponsor logo can be placed in the middle of graphic. Four stat categories are recommended.



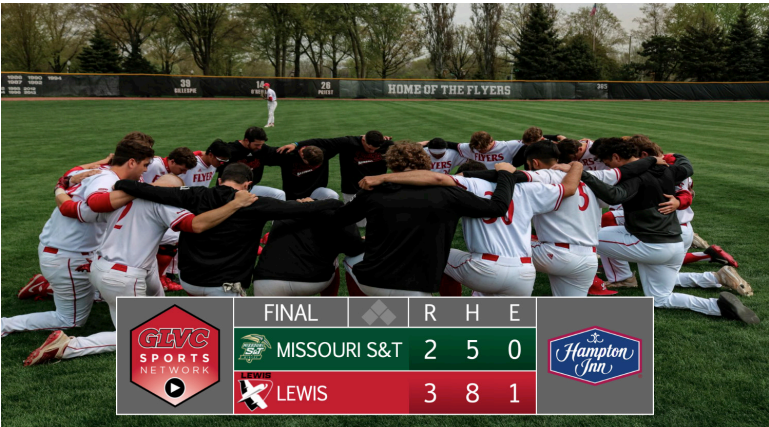


Baseball/Softball

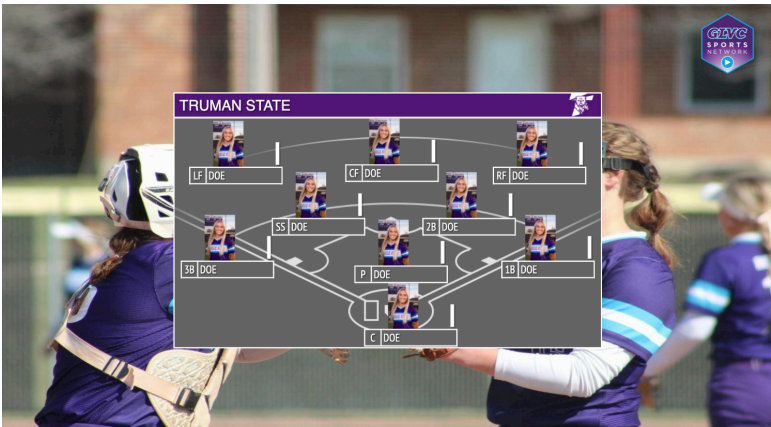
The **Game Info** graphic is shown top-left. GLVC wordmark or sponsor logo can be placed in the middle of graphic (recommended). Pop-up text is optional but recommended and can be customized as desired.

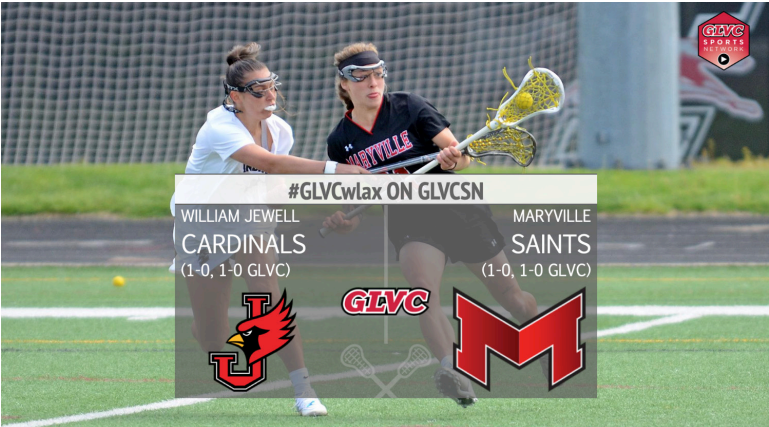
The **Scoreboard** graphic is shown middle-left. Do not use GLVC wordmark in bump-out, as it does not fit well. Do not use GLVCSN hexagon in bump-out, as that is redundant. Pop-up text (not shown) is optional but recommended and can be customized as desired. Sponsor logo in bump-out is optional.

The **Breakboard** graphic is shown bottom-left. Pop-up text is optional but recommended and can be customized as desired. Bump-out logos are optional, but left one should be used first.



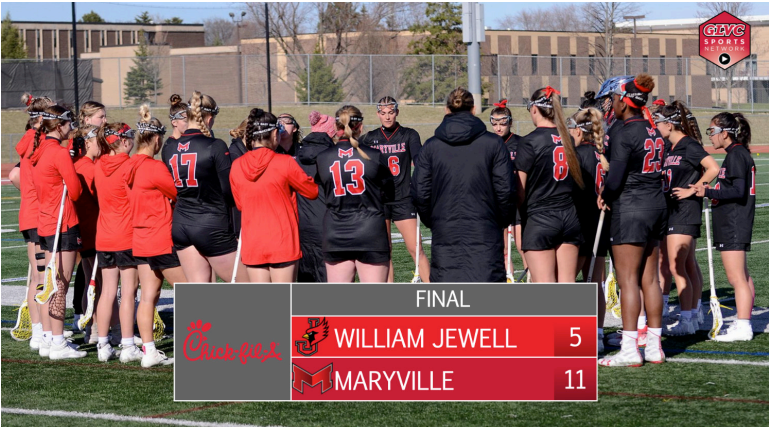
The **Starting/Batting/Field Lineup** graphics are shown to the right. GLVC wordmark or sponsor logo can be placed in bottom-right of graphics shown at top and bottom. Middle-right has option to add 10th player and can be repositioned. Optional player images can be pulled directly from website roster pages.





Lacrosse

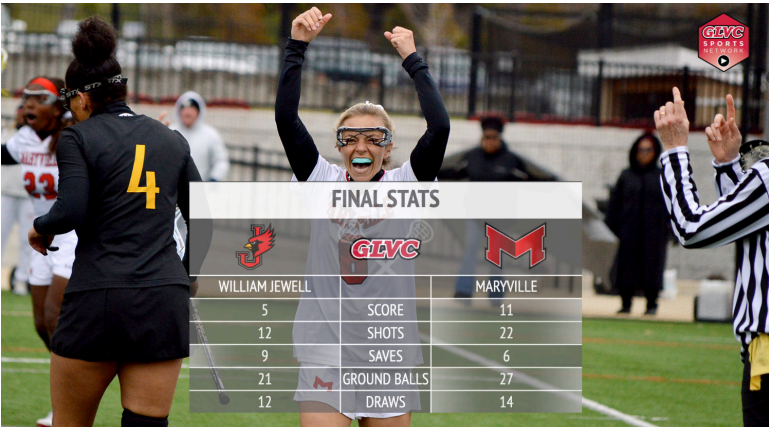
The **Game Info** graphic is shown top-left. GLVC wordmark or sponsor logo can be placed in the middle of graphic (recommended). Pop-up text is optional but recommended and can be customized as desired.



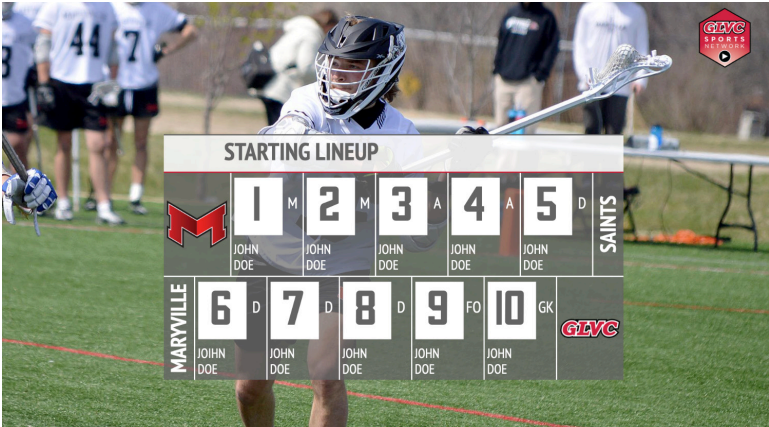
The **Starting Lineup** graphic is shown top-right (WLAX lineup has space for 12). GLVC wordmark or sponsor logo can be placed in the right of graphic. Optional player images (shown without) can be pulled directly from website rosters.

The **Breakboard** graphic is shown middle-left. Pop-up text is optional (not shown) but recommended and can be customized as desired. Bump-out logos are optional, but left one should be used first.

The **Scoreboard** graphic is shown middle- and bottom-right. Middle-right is preferred, but GLVC wordmark is mandatory in both. Pop-up text is optional but recommended and can be customized as desired. Optional bump-out for sponsor in both graphics.



The **Team Stats** graphic is shown bottom-left (there is not a lacrosse-specific stats graphic). GLVC wordmark or sponsor logo can be placed in the middle of graphic. At least four stat categories are recommended.





NCAA Postseason

The **Game Info** and **Watermark** soccer graphics are shown top-left. “Logo-NCAAMIY-WhiteStacked” should be placed in the middle of Info graphic. Pop-up graphic should read NCAA DI (name of tournament). Watermark is “Logo-NCAAdisc.”

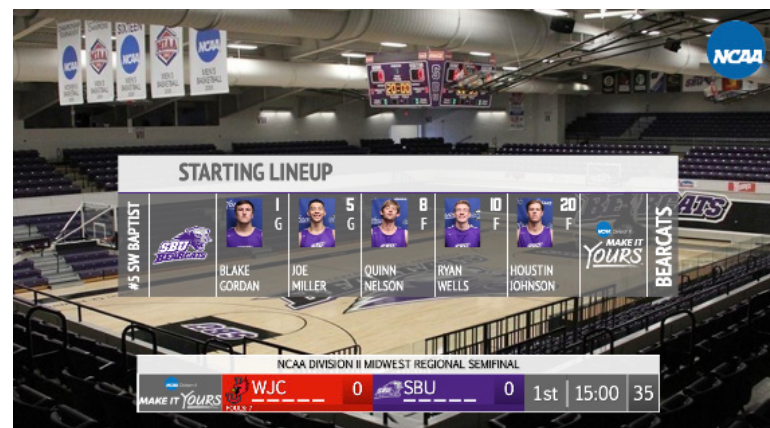


The **Scoreboard**, **Starting Lineup**, and **Lower Third** soccer graphics are shown top-right. Pop-up graphic in scoreboard should read NCAA DII (name of tournament). “Logo-NCAAMIY-StackedWhite,” “Logo-NCAAMIY-StackedBlack,” and “Logo-NCAAMIY-White” should appear in logo space for all graphics where shown.



The **Scoreboard** and **Breakboard** volleyball graphics are shown middle-left. Both graphics should include “Logo-NCAAMIY-WhiteStacked.” **Stats** graphic is shown middle-right; same MIY logo should go middle of graphic and pop-up text should match.

For basketball bottom-left and bottom-right graphics, all remain the same as above.





Miscellaneous

The **Announcer Overlay** graphic is shown top-left. Graphic allows for three names and descriptions with pop-up title.

The **Logo Lower Third** graphic is shown top-right. School, GLVC (primary or sport; not wordmark), or sponsor logo can be used on left of graphic with optional customized pop-up text.

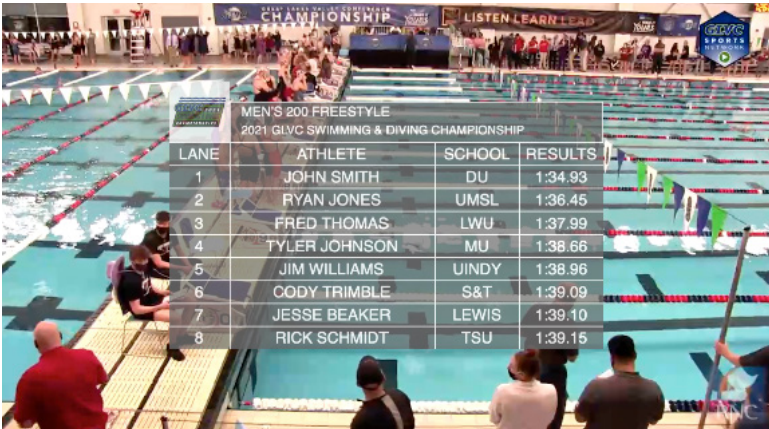


The **Twitter** graphic is shown middle-left. Tweets can be found by searching accounts, hashtags, or keywords.

The **Info Box** and **Lane Assignments** graphics are shown middle- and bottom-right. Headline/sub-headline is left justified, while all text in rows can be left/right justified or centered on Info; can utilize 1-10 lines. All lines in Lane graphic can be customized, but justification cannot. Logo can be added to upper left in both.



The **Ticker** graphic is shown bottom-left. Since the ticker is school-specific news, left logo should be school's horizontal mark, with right logo as school-specific GLVC wordmark. If a school does not have a horizontal mark, the GLVC wordmark can be used on the left and a sponsor logo on right. If both a horizontal school logo and a sponsor logo are available, the sponsor can replace the GLVC wordmark on right.



MEN'S 200 FREESTYLE 2021 GLVC SWIMMING & DIVING CHAMPIONSHIP			
LANE	ATHLETE	SCHOOL	RESULTS
1	JOHN SMITH	DU	1:34.93
2	RYAN JONES	UMSL	1:36.45
3	FRED THOMAS	LWU	1:37.99
4	TYLER JOHNSON	MU	1:38.66
5	JIM WILLIAMS	UINDY	1:38.86
6	CODY TRIMBLE	S&T	1:39.09
7	JESSE BEAKER	LEWIS	1:39.10
8	RICK SCHMIDT	TSU	1:39.15



GREAT LAKES VALLEY CONFERENCE

201 S. Capitol Ave., Suite 560, Indianapolis, IN 46225

(317) 237-2105 | GLVCsports.com | [@GLVCsports](https://twitter.com/GLVCsports)