



How to Sync Camera's Recorded Files Back to GV-VMS

Article ID: GV1-24-06-26

Release Date: June 26, 2024

Revision Date: July 8, 2025

Applied to

GV-VMS

GV-IP Cameras

Summary

The Automatic Network Replenishment (ANR) function can automatically store video data on an IP camera's memory card when its connection with GV-VMS is disrupted. After reconnection, the camera can send video back to the GV-VMS.

For this function to work, **both GV-VMS and an ANR compatible camera (whether GV-IP or 3rd party camera) must have related settings enabled.**

Contents

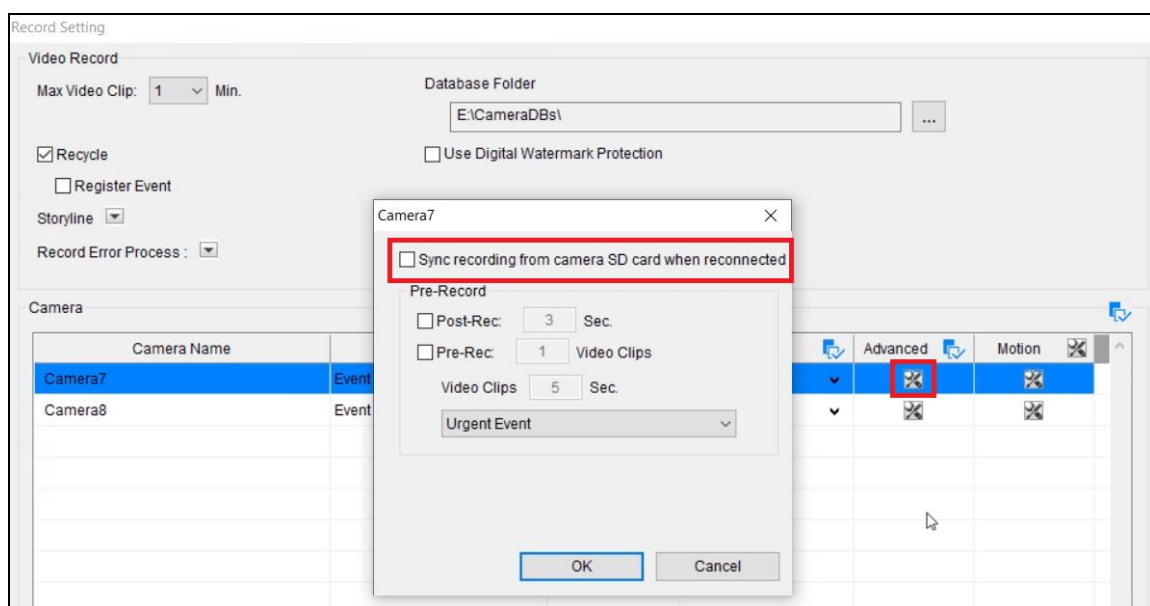
1. Enabling ANR and Device Time Sync on GV-VMS	2
1.1 Enabling ANR	2
1.2 Enabling Device Time Sync	2
2. Enabling ANR on an IP Camera	3
2.1 GV-A / B / E / F / S / T Series, and others	4
2.2 GV-Q Series.....	4
2.3 GV-G, P and R series, and others	6



1. Enabling ANR and Device Time Sync on GV-VMS

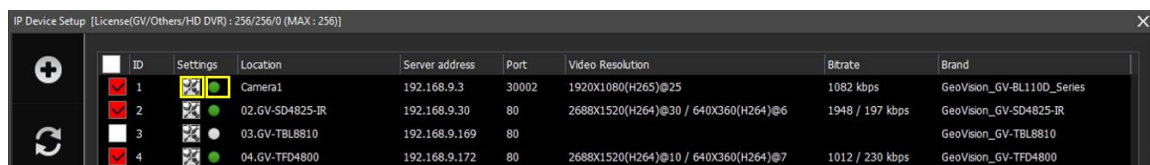
1.1 Enabling ANR

1. On the GV-VMS main screen, select Toolbar > Configure > System Configure > Record Setting. The Recording Setting dialog box appears.
2. For a camera to have the ANR function, click the button under **Advanced** and select **Sync recording from camera SD card when reconnected**.



1.2 Enabling Device Time Sync

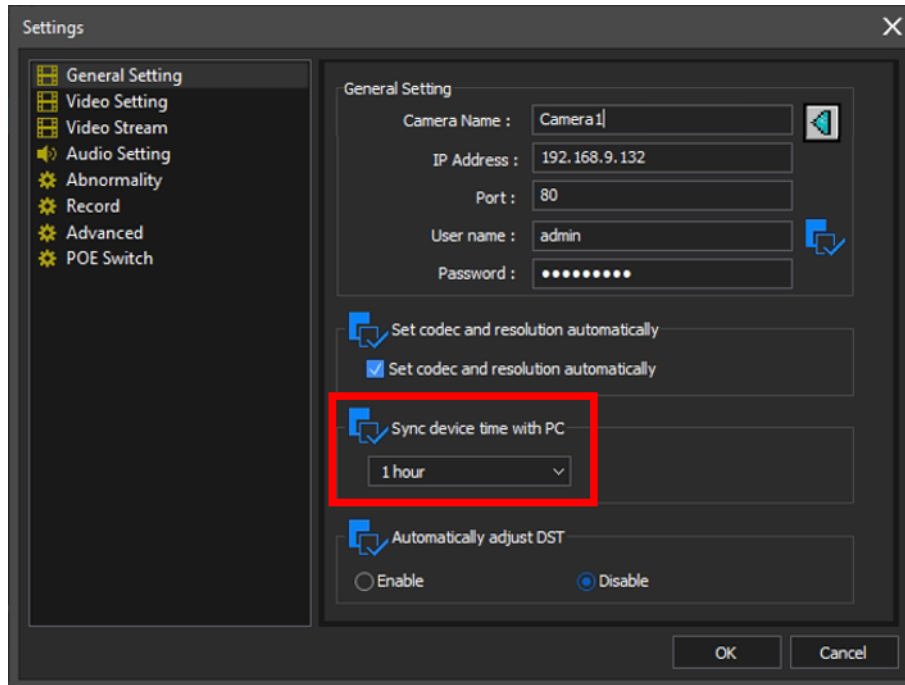
1. On the GV-VMS main screen, select Toolbar > Configure > Camera Install. The Recording Setting dialog box appears.



2. Click the Setup button of the connected camera on the IP Device List.



3. To ensure a consistent timeline after ANR, enable **Sync Device Time with PC** in the General Settings dialog box by selecting an interval of *1 – 24 hours* based on user requirements.



2. Enabling ANR on an IP Camera

GeoVision offers a variety of IP cameras. Different cameras have different settings, so check out the four categories of cameras below to identify yours and learn how to set it up.

1. **GV-A / B / E / F / S / T Series, and others:** no additional settings required on the camera
2. **GV-Q Series**
3. **GV-G, P and R series, and others**
4. **3rd party cameras supporting ONVIF Profile G**

Except for the first category "GV-A / B / E / F / S / T Series, and others", it is essential to **enable round-the-clock recording and recording to SD card** on the cameras of all the other three categories.



2.1 GV-A / B / E / F / S / T Series, and others

The following IP cameras are compatible with the ANR function. **It is not necessary to configure additional settings on the following cameras** to have the ANR function.

- GV-ABL / TBL Series
- GV-ADR / TDR Series
- GV-AVD / TVD Series
- GV-BLFC5800
- GV-EBD Series, GV-EBDP5800, GV-EBFC5800
- GV-FER5702
- GV-PTZ5810-IR
- GV-SD2322-IR / SD2722-IR / SD3732-IR / SD4825-IR / SD4834-IR
- GV-TBLP5800
- GV-TFD Series

Note: GV-TMS8800 does not support the ANR function.

2.2 GV-Q Series

It is required to **enable round-the-clock recording** and **recording to SD card** on GV-Q series cameras to have the ANR function:

- GV-Q series models (GV-Qxxxxxx), such as QFER12700
1. Go to **System > Event > Network Failure Detection**.
 2. Select **ON** for Detection Switch
 3. Select **Record video clip** and **SD card** for Trigger Action.



GeoVision [Home](#) [System](#) [Streaming](#) [Image](#) [PTZ](#) [Logout](#) English

System
Security
Network
DDNS
Mail
FTP
HTTP
Events
I/O Application
Motion Detection
Network Failure Detection
Periodical Event
Manual Trigger
Audio Detection

Network Failure Detection

Detection Switch
 Off
 On
 By schedule
Please select ...

Detection Type
Ping the IP address every seconds

Triggered Action
 Enable alarm output 1 low
 Enable alarm output 2 low
 Send message by FTP
 Send message by E-Mail
 Record video clip
Record to
Pre-trigger buffer sec
 Upload for sec
 Upload while the trigger is active



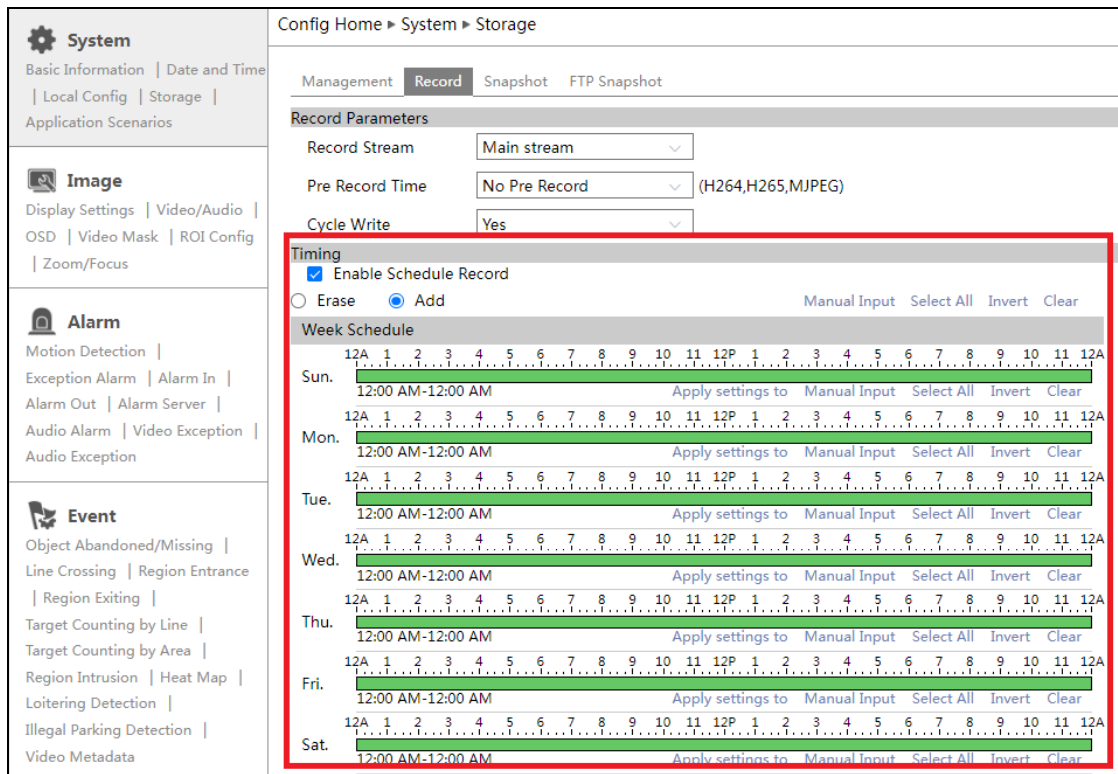
2.3 GV-G, P and R series, and others

It is required to **enable round-the-clock recording** and **recording to SD card** on the following cameras to have the ANR function:

1. GV-G series models (GV-Gxxxxx), such as GV-GBL4900, and GV-TMEB5800, GV-BX2802 / 4802
2. GV-P series models (GV-Pxxxxxx), such as GV-PBL8800
3. GV-R series models (GV-Rxxxxxx), such as GV-RBL5800, and UA-IP cameras UA-B580F3 / R500F2 / R560F2 / R580F2 / R800F2

Take **GV-G series** model GV-GBL4900 as an example

1. To enable round-the-clock recording, select **Configure > System > Storage > Record**, check **Enable Schedule Record**, and keep a full-week schedule setting.



The screenshot shows the 'Record' configuration page in the GeoVision web interface. The left sidebar contains navigation options for System, Image, Alarm, and Event. The main content area is titled 'Config Home > System > Storage' and includes tabs for Management, Record, Snapshot, and FTP Snapshot. Under 'Record Parameters', 'Record Stream' is set to 'Main stream', 'Pre Record Time' is 'No Pre Record', and 'Cycle Write' is 'Yes'. The 'Timing' section is highlighted with a red box and contains the following settings:

- Enable Schedule Record
- Erase Add
- Manual Input Select All Invert Clear

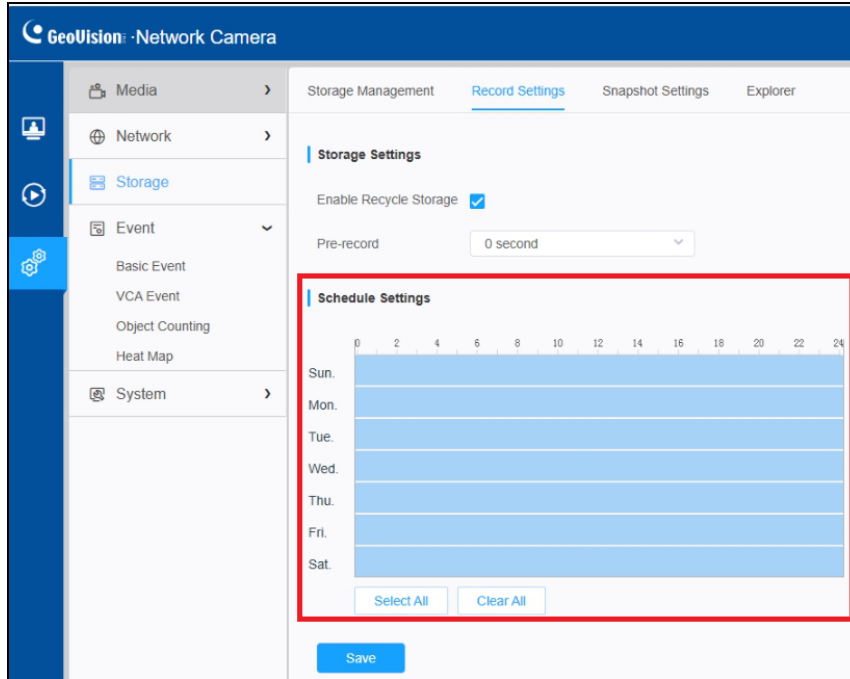
The 'Week Schedule' section shows a grid for each day of the week (Sun. through Sat.), with a green bar indicating recording from 12:00 AM to 12:00 AM. Each day's row includes a '12A' label and a grid of numbers 1 through 12, followed by '12P' and another grid of numbers 1 through 12. Below each day's grid are the labels '12:00 AM-12:00 AM', 'Apply settings to', 'Manual Input', 'Select All', 'Invert', and 'Clear'.

2. To enable recording to the SD card, select **Configure > System > Storage > Management**, and ensure the SD card is properly installed and formatted.



Take **GV-P series** model GV-PBL8800 as an example

1. To enable round-the-clock recording, select **Storage > Record Settings**, and keep a full-week schedule setting.

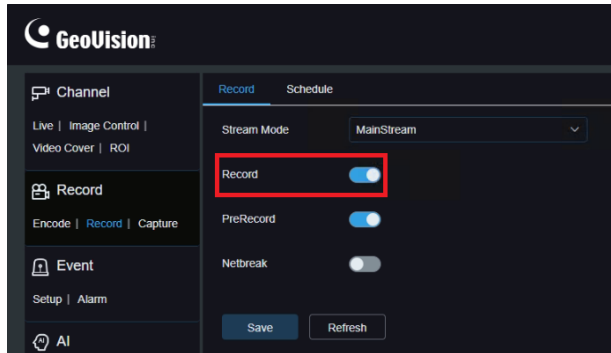


2. To enable recording to the SD card, select **Storage > Storage Management**, and ensure the SD card is properly installed and formatted.



Take **GV-R series** model GV-RBL5800 as an example

1. To start recording, select **Remote Setting > Record > Record**, and enable **Record**.



2. To enable round-the-clock recording, keep a full-week schedule setting under the Schedule tab.



3. To enable recording to the SD card, select **Remote Setting > Device > Disk**, and ensure the SD card is properly installed and formatted.