



How to text overlay a standalone LPR's data on GV-VMS's live view

Article ID: GV4-24-02-27

Release Date: Feb. 27, 2024

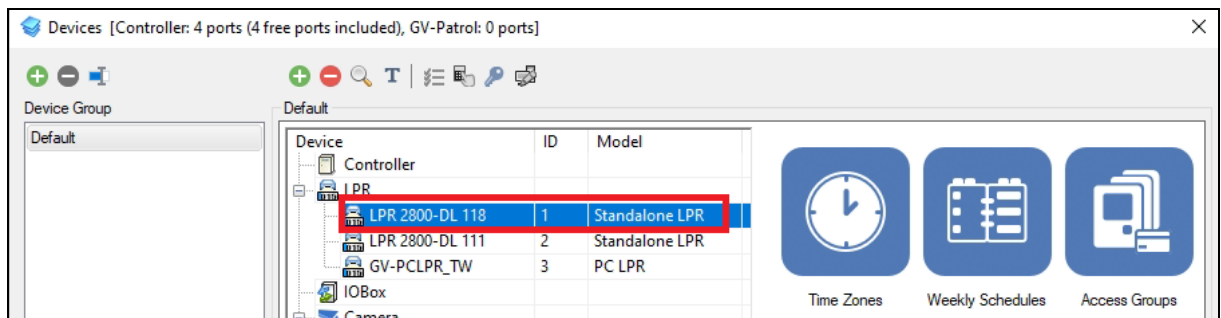
Introduction

Standalone LPR cameras with built-in processors, such as GV-LPR2800-DL and GV-LPR2811-DL, can recognize license plates and match them to the GV-ASManager database for access control management. In this document, we use **GV-LPR2800-DL** as an example to guide you through the instructions of how to overlay captured LPR data on GV-VMS live view.

Instructions

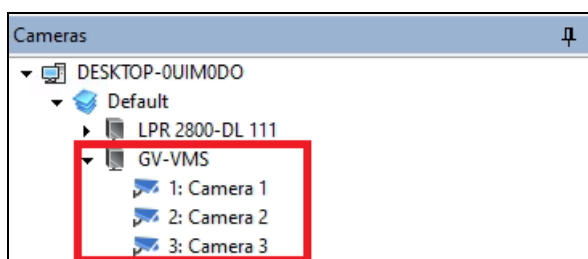
First, ensure that the LPR camera and software are properly connected.

1. GV-LPR2800-DL is added as a channel in GV-VMS.
2. GV-LPR2800-DL is added to GV-ASManager as a standalone LPR device.



For details, see *13.3 Adding Standalone LPR in GV-ASManager User's Manual*.

3. GV-VMS, with the GV-LPR2800-DL channel, is added to GV-ASManager as a camera view.

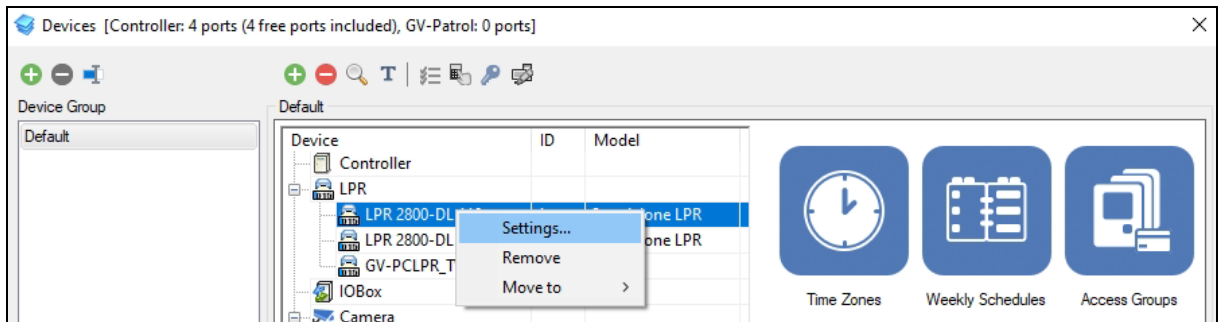


For details, see *5.1 Mapping Cameras in GV-ASManager User's Manual*.

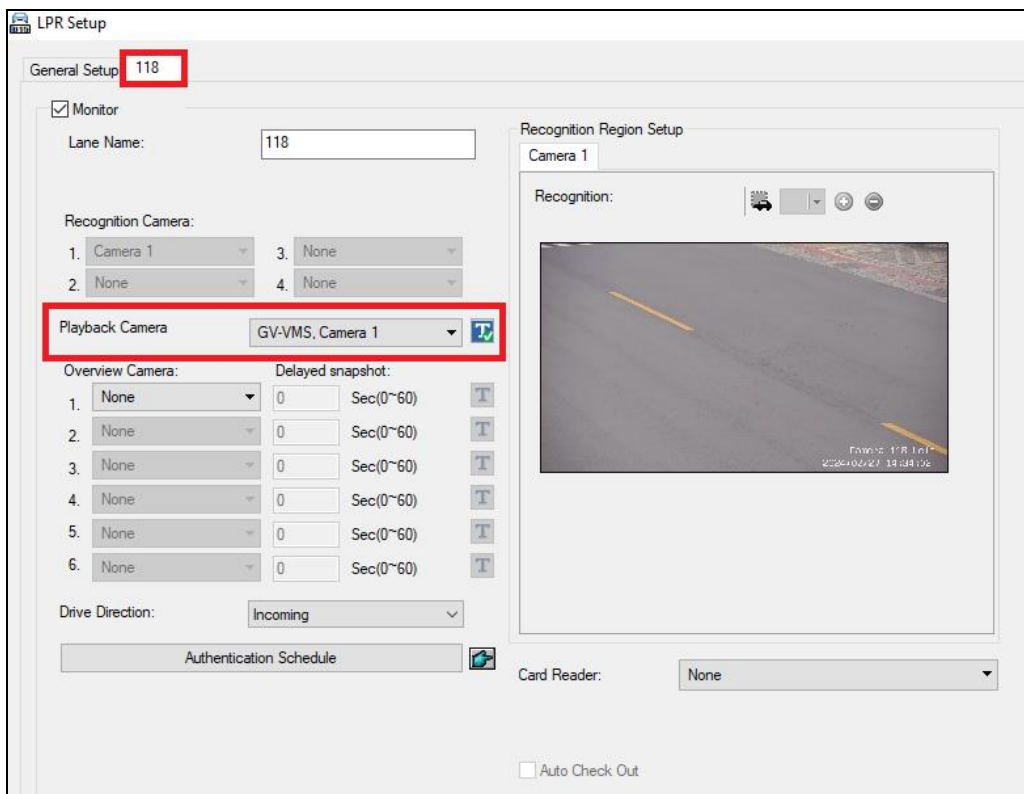


[Enabling Text Overlay on GV-ASManager]

- Right-click the GV-LPR2800-DL in the Devices list and select **Settings**.

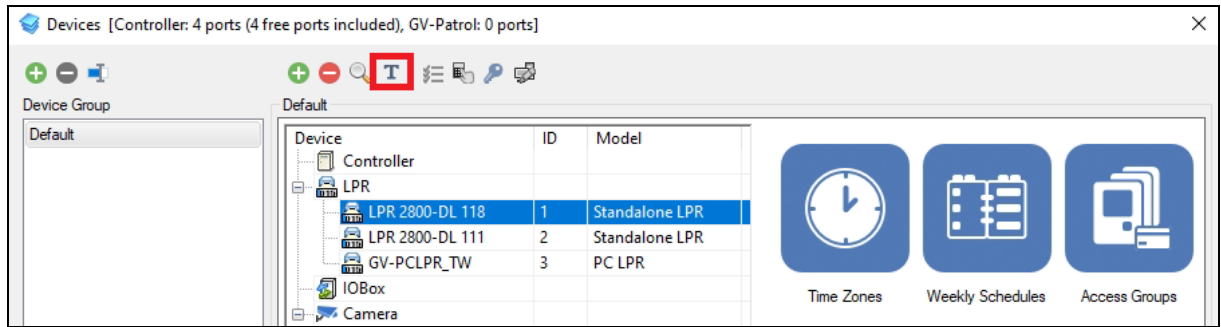


- In the LPR Setup dialog box, select the LAN tab and the GV-VMS camera channel assigned to the GV-LPR2800-DL from the Playback Camera dropdown list. Enable **Text Overlay**.

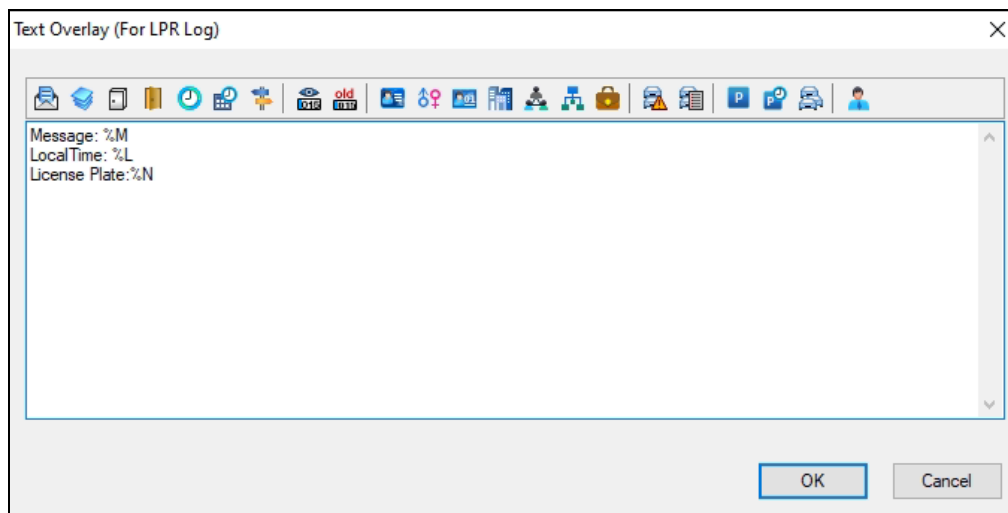




- In the Devices list, select the GV-LPR2800-DL and click the **Camera Text Overlay** button T

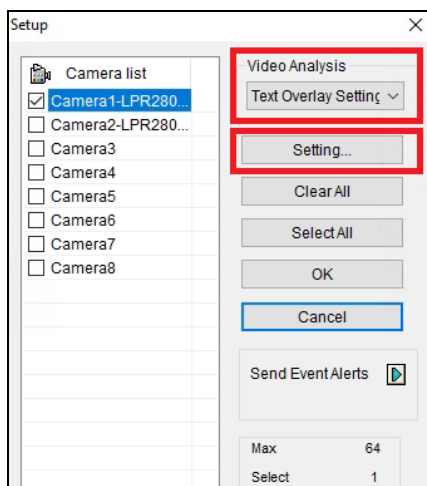


- Use the text window to send pre-programmed messages or enter your own.



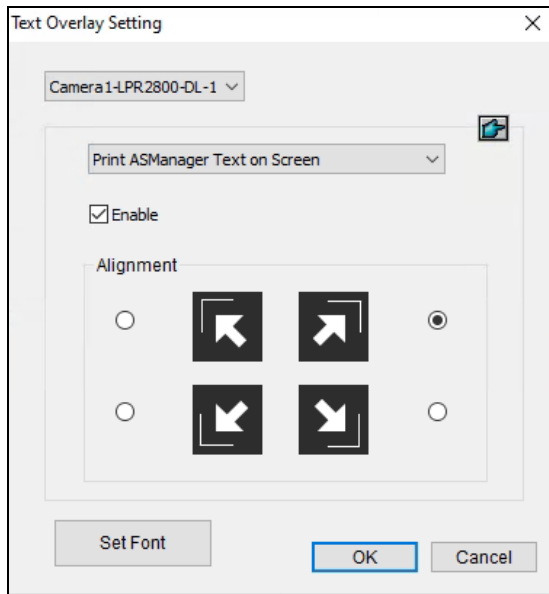
[Enabling Text Overlay on GV-VMS]

- On the GV-VMS, select **Toolbar > Configure > Video Process**.
- In the Setup dialog box, select the GV-LPR2800-LD camera, **Text Overlay Setting** under Video Analytics, and click **Setting**.





10. Select **Print ASManager Text on Screen**, the desired position to display the text overlay on the screen, and click **OK**.



The LPR recognition results from the GV-LPR2800-DL are now overlaid on the GV-VMS live channel.



You can also find the corresponding LPR record in the GV-ASManager.

