



How to Set up Microsoft SQL Server for GV-ASManager

Article ID: V4-23-05-05

Release Date: May 5, 2023

Applied to

GV-ASManager

Summary

Users can choose to use Microsoft SQL Server Database as the database for GV-ASManager. The documentation describes how to install and set up the SQL Server in the same computer as GV-ASManager.

Table of Contents

1. Installing the SQL Server	1
2. Setting up GV-ASManager.....	5

1. Installing the SQL Server

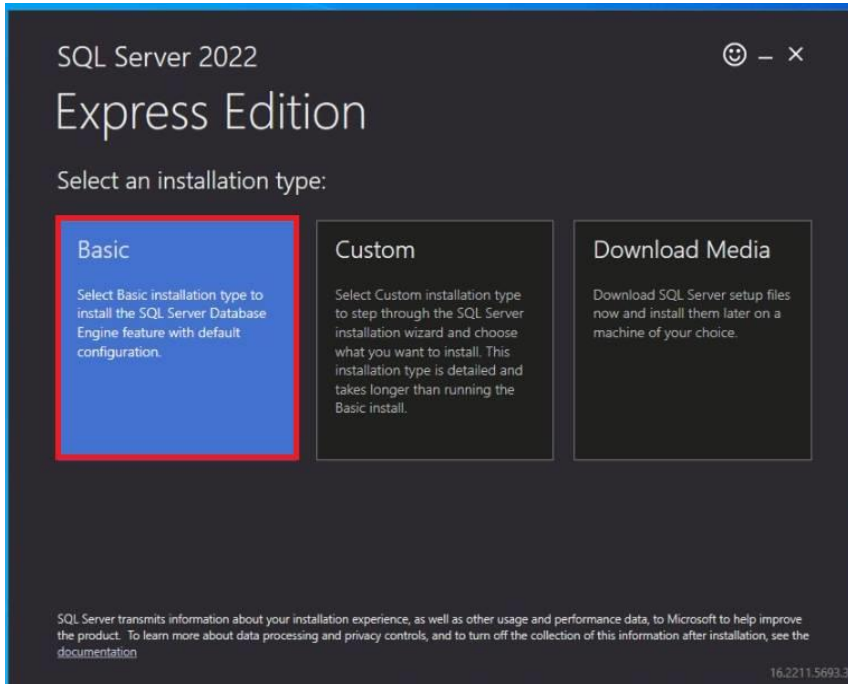
To download and install the SQL Server, search for it on the Microsoft website

(<https://www.microsoft.com>), or download **Microsoft SQL Server 2022 Express** [here](#).

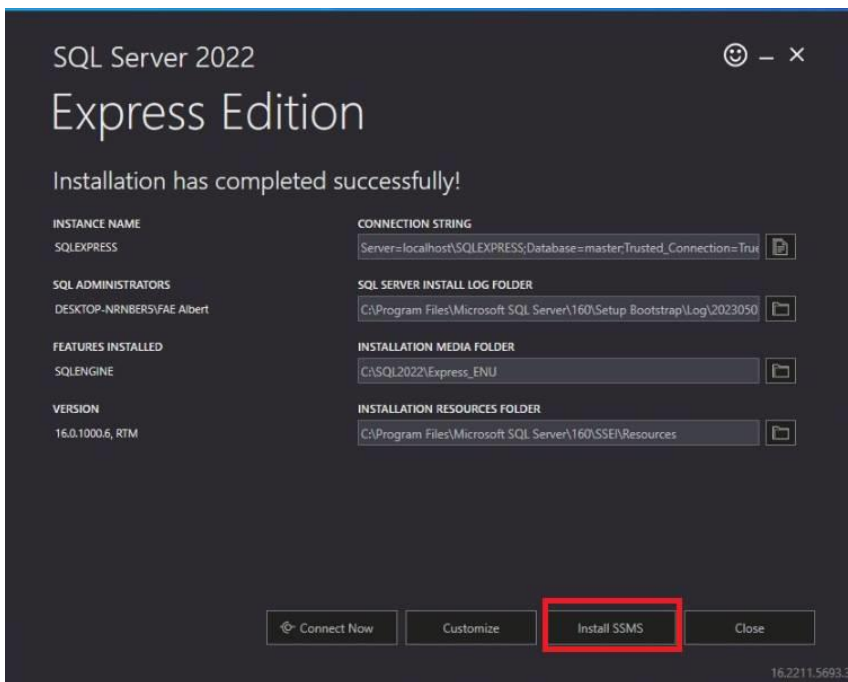
IMPORTANT: The following instructions are exemplified using **Microsoft SQL Server 2022 Express**.



1. Run **SQL2022-SSEI-Expr.exe**.
2. Select **Basic** to install the SQL Server.



3. After the installation is completed, select **Install SSMS** to go to the download page of SQL Server Management Studio.





4. Download **SSMS**.

Download SQL Server Management Studio (SSMS)

Article • 03/13/2023 • 48 contributors [Feedback](#)

Applies to: ✔ SQL Server ✔ Azure SQL Database ✔ Azure SQL Managed Instance ✔ Azure Synapse Analytics

SQL Server Management Studio (SSMS) is an integrated environment for managing any SQL infrastructure, from SQL Server to Azure SQL Database. SSMS provides tools to configure, monitor, and administer instances of SQL Server and databases. Use SSMS to deploy, monitor, and upgrade the data-tier components used by your applications and build queries and scripts.

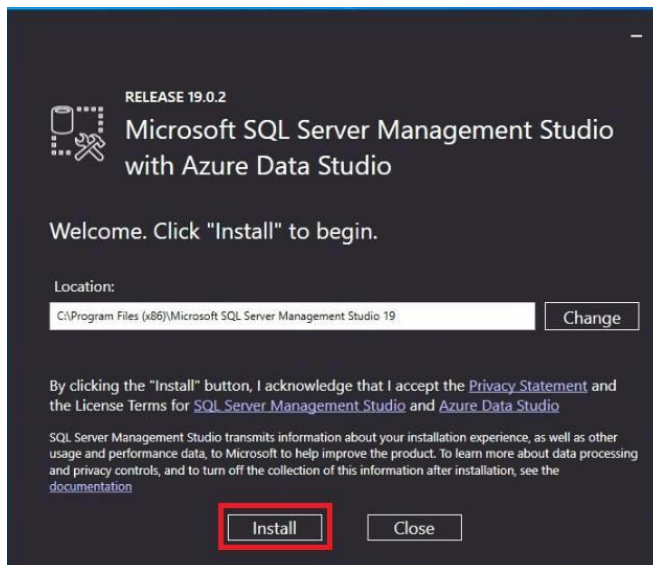
Use SSMS to query, design, and manage your databases and data warehouses, wherever they are - on your local computer or in the cloud.

Download SSMS

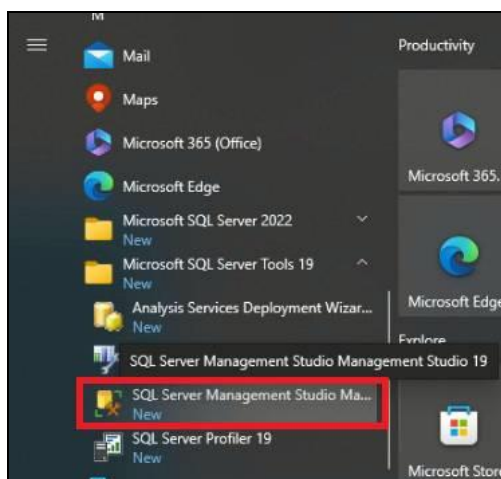
[Free Download for SQL Server Management Studio \(SSMS\) 19.0.2](#)

SSMS 19.0.2 is the latest general availability (GA) version. If you have a *preview* version of SSMS 19 installed, you should

5. Run **SSMS-Setup-ENU.exe** to install SQL Server Management Studio.

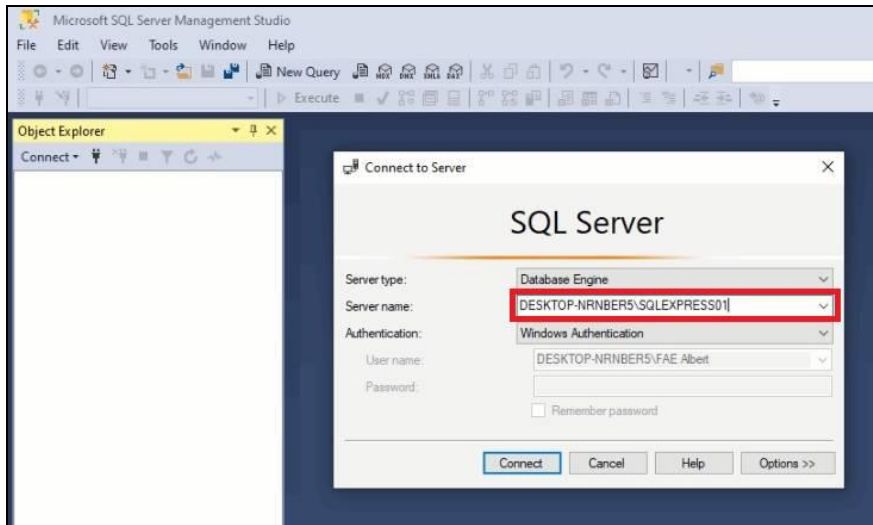


6. After the SSMS installation is completed, run **SQL Server Management Studio** from Windows menu.





7. On the SQL Server dialog box, copy **Server Name** to set up GV-ASManager in the later procedures.





2. Setting up GV-ASManager

To connect GV-ASManager to the SQL Server, follow the steps below.

1. To start the Database Tools, run **ASDBManager.exe** from the program folder to access it.
2. On the Database Tools, click **ASManager Database and Path Setting > Setup MDB / MSSQL Database for ASManager**. This dialog box appears.

Setup Database Connection

Database Type

Microsoft Office Access Database

Microsoft SQL Server

Database Options

Keep Days day(s)

SQL Database Setting

Data Source: DESKTOP-NRNBER5\SQLEX

Authentication:

Windows Authentication
(ASManagerService can't run as a Windows service)

SQL Server Authentication

Login:

Password:

Expand Data Size

Database

ASConfig Name:

ASLog Name:

ASLPR Name:

ASPatrol Name:



3. Configure the following settings.
 - A. Under Database Type, select **Microsoft SQL Server**.
 - B. Paste the **Server Name** of the SQL Server to the Data Source field.
4. Click **Test Connection**. The “Test connection OK!” message appears to indicate a successful connection to the SQL Server.

