



Firmware Upgrade Instructions

Article ID: GV4-18-07-12-a

Release Date:07/12/2018

Revision Date:08/28/2018

Applied to

GV-Controllers

Summary

The firmware upgrade method varies depending on controller models and version numbers.

IMPORTANT: If you use GV-IP Device Utility V8.7.1.0 and earlier versions, your controller may not start properly after upgrading.

For GV-AS 21 / 41 / 81 series Controllers

If your GV-AS21 / 41 / 81 series Controller firmware falls between **V1.00** and **V1.21**, you must upgrade to V1.22 before you can upgrade to V2.XX.

GV-Controller	Firmware Version	Upgrade To...	Upgrade Method
210 / 2110 / 2120	V1.00 – V1.21	V1.22	Through GV-Net Module Utility (V4.3.5.0 or later) or Through GV-Web Browser
410 / 4110 / 4111	V1.00 – V1.21	V1.22	
810 / 8110 / 8111	V1.00 – V1.21	V1.22	



GV-Controller	Firmware Version	Upgrade To...	Upgrade Method
210 / 2110 / 2120	V1.22	V1.22 → V2.XX	Through GV-Web Browser
410 / 4110 / 4111	V1.22	V1.22 → V2.XX	
810 / 8110 / 8111	V1.22	V1.22 → V2.XX	

If your GV-AS21 / 41 / 81 series Controller firmware is **V2.00**, upgrade your firmware version to V2.XX either through the GV-IP Device Utility or GV-Web Browser directly.

GV-Controller	Firmware Version	Upgrade To...	Upgrade Method
210 / 2110 / 2120	V2.00	V2.00 → V2.XX	Through GV-IP Device Utility (V8.7.2.0 or later) or Through GV-Web Browser
410 / 4110 / 4111	V2.00	V2.00 → V2.XX	
810 / 8110 / 8111	V2.00	V2.00 → V2.XX	



For GV-EV48 Controller

If your GV-EV48 Controller firmware is on **V1.00**, you must upgrade to V1.10 before you can upgrade to V1.XX.

If your GV-EV48 Controller firmware is on **V1.4X**, use GV-IP Device Utility or GV-Web Browser.

GV-Controller	Firmware Version	Upgrade To...	Upgrade Method
EV48	V1.00	V1.10	Through GV-Net Module Utility (V4.3.5.0 or later) or Through GV-Web Browser
	V1.10	V1.10 → V1.4X	Through GV-Web Browser
	V1.4X	V1.4X → V1.XX	Through GV-IP Device Utility (V8.7.2.0 or later) or Through GV-Web Browser

For other GV-Controllers

GV-Controller	Firmware Version	Upgrade To...	Upgrade Method
AS1010	V1.00	V1.00 → V1.XX	Through GV-IP Device Utility (V8.7.2.0 or later)
AS1110	V1.00	V1.00 → V1.XX	
AS1520	V2.00	V2.00 → V2.XX	or
CS1320	V1.00	V1.00 → V2.XX	Through GV-Web Browser




How to Upgrade

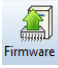
According to the tables, there are three methods to upgrade your Controller's firmware version: from the Web browser, GV-Net Module Utility or GV-IP Device Utility. Use the appropriate upgrade method for your current firmware version and follow the instructions in that section below.

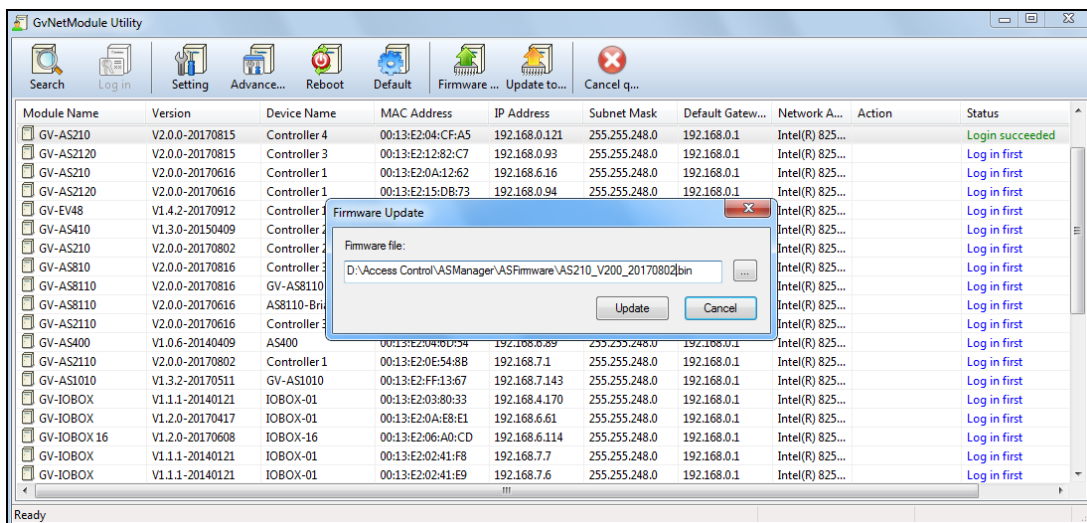
From GV-Net Module Utility

1. Install **GV-Net Module Utility** from http://54.200.75.24/english/EncodeUrl3.aspx?source=http://dlcdn.geovision.com.tw/Software/Paid/GvNetModuleUtility_Setup.zip

2. On the GV-Net Module Utility window, locate your GV-AS Controller from the list, and click

the **Log in**  button to log on to this module with the login ID and password.

3. Click the **Firmware...**  button, and assign the firmware file for upgrade.



4. After the Firmware Update is complete, your GV-Controller will be automatically logged onto the module again.



From GV-IP Device Utility

1. Install **GV-IP Device Utility** from <http://54.200.75.24/english/EncodeUrl3.aspx?source=http://dlcdn.geovision.com.tw/Software/DVD/FreeAP/InstallUtility.zip>
2. Locate your GV-Controller from the list.
3. Double click that controller. When the dialog box appears, click the **Firmware Upgrade** tab.

The screenshot shows a dialog box titled "GV-IP Device Utility" with a close button in the top right corner. The dialog is divided into several sections:

- Mac Address:** 0013E2019BAD
- IP Address:** 192.168.3.203
- User Login:**
 - User Name:** admin
 - Password:** ****
 - VSS Port:** 10000
- Navigation Tabs:** Set IP Address | **Firmware Upgrade** | Device Name | Export settings | Import settings | Camera < | >
- Version:** v1.03 2011-03-25 (with a "Browse..." button next to it)
- Upgrade all devices:**
- Buttons:** Upgrade, Cancel

4. Click the **Browse** button to locate the firmware file saved at your local computer.



From the Web Browser

1. Go to the Web interface of your GV-Controller.
2. In the left menu, click **Firmware Update**. This page appears.

Firmware Update

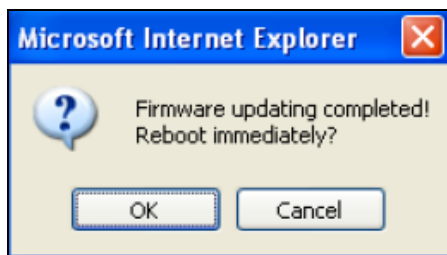
Firmware Update
After pressing the Update button, please wait while the update request is being processed. After update is completed, the device will reboot automatically. You can re-login afterwards.

Select Firmware:

Update State:

Update Process: %

3. Click the **Browse...** button to upload the firmware file.
4. Click the **Upload** button. When the Update Process reaches 100%, a dialog box appears and asks you to reboot the system.



5. Click **OK**. After finishing the Reboot operation, your firmware upgrade is complete.