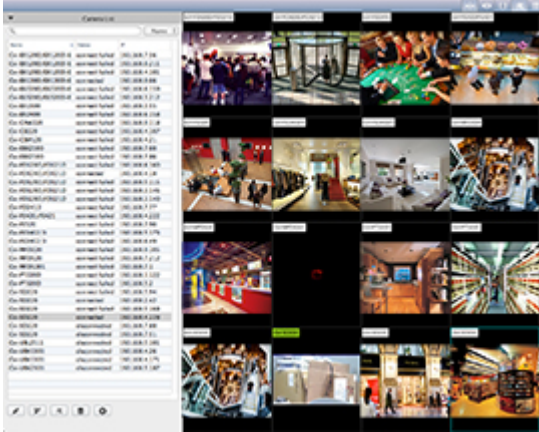


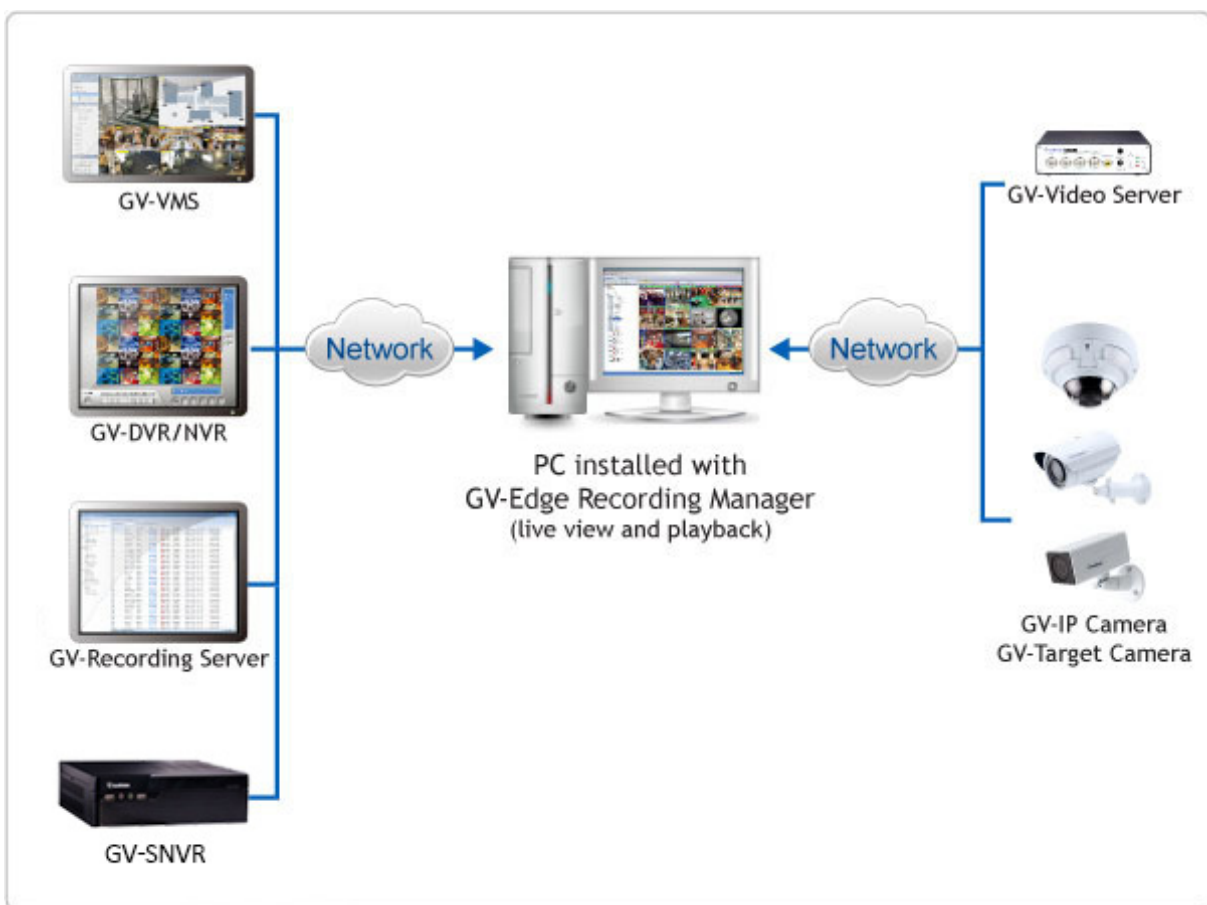
GV-Edge Recording Manager (Mac Version)



INTRODUCTION

GV-Edge Recording Manager is a tool designed for recording management of remote GV-IP Cameras and GV-Target Cameras. It is an integrated interface from which you can access live view, assign recording to NAS servers, enable recording, play back videos and view storage space without visiting each host's Web interface. Any connection with hosts can be disabled without affecting or stopping the hosts' normal functioning.

GV-Edge Recording Manager also supports live view display and video playback of hosts connected to GV-Video Server, GV-DVR / NVR / VMS, GV-Recording Server and GV-SNVR.



Assigning Recording to NAS Servers

Through GV-Edge Recording Manager, you can have GV-IP Cameras or GV-Target Cameras record to NAS servers and also view the storage information such as the occupied space and remaining space. GV-NAS Systems are also available at your choice.



Features

- Display up to 32 channels for free, up to 64 channels using In-App Purchase
- On-demand display for dual channels
- Fisheye dewarping
- PIP / PAP view
- Manual snapshot
- Enable and disable host recording for GV-IP Devices
- Host storage assignment to NAS servers for compatible GV-IP Devices
- Remote playback
- Batch IP address assignment for GV-IP Devices
- PTZ control
- One-way audio
- Import and export of system configuration
- View host storage information (free and occupied space) for GV-IP Devices
- Video Decode Acceleration on live view

Minimum System Requirements

OS Supported		OS X 10.9 or later
Mac PC	32 channels (with Dual Streams)	Mac mini (Core i5-3210M, 8 GB RAM)
	64 channels (with Dual Streams)	iMac (Core i7-4770s, 8 GB RAM)

Software License

Free License	32 Channels
Maximum License	64 Channels
Increment for Each License	N/A
Optional Combinations	N/A
License Type	In-App Purchase

Note: For details on purchasing software license for Mac online, see 12.2 *Purchasing License* in *GV-Edge Recording Manager User's Manual*.

Compatible GeoVision IP Devices and Software

GV-IP Devices		Supported Version
GV-IP Camera		V3.00 or later
GV-IP Speed Dome	GV-SD220	V1.04 or later
	GV-SD2300/2301	V1.08 or later
	GV-SD2411	V1.01 or later
GV-Target Camera		V1.02 or later
GV-Video Server	GV-VS11	V1.03 or later
	GV-VS12	V1.07 or later
	GV-VS14	V1.01 or later
	GV-VS2400/2420	V1.00 or later
GV-NVR System	GV-SNVR0400F	V1.10 or later
	GV-SNVR0411	V2.10 or later
	GV-SNVR0811	V2.40 or later
	GV-SNVR1600	V1.10 or later

GV-Software	Supported Version
GV-Recording Server	V1.2.4.0 or later
GV-DVR / NVR	V8.7.1.0 or later
GV-VMS	V14.10 or later

- Note:**
1. Recording to GV-NAS Systems is only supported by GV-IP Camera and GV-Target Camera of the specified versions.
 2. Files recorded to GV-NAS Systems are stored in the MPEG4 format and those recorded to memory cards are stored in the AVI format.
 3. GV-Edge Recording Manager (Mac Version) does not support GV-SD2322-IR, GV-SD-3732-IR, GV-EBD4700, and GV-ABL / ADR / ABD 1300.

Specifications

Supported Hosts		
GV-DVR / NVR	Unlimited	
GV-VMS		
GV-Recording Server		
GV-IP Camera		
GV-Target Camera		
GV-IP Speed Dome		
GV-Video Server		
GV-SNVR		
Live View		
No. of Channels	32 (free); 64 (with In-App Purchase)	
Codec	H.265, H.264 and MJPEG	
Single Live View Window	1	
Window Division	4, 6, 8, 9, 10, 13, 16, 25, 36, 64	
Display Mode	Snapshot, audio, rotation, PIP, PAP, Fisheye dewarping, Video Decode Acceleration	
Audio	One-way	
PTZ	Pan, tilt and zoom	
Host Recording (Monitoring)	Enable/disable monitoring of a single host or all hosts (for GV-IP Devices)	
Channel Status Indicator	Yellow	Not under monitoring
	Green	Under monitoring but not being recorded
	Red	Under monitoring and is being recorded
Host Batch Management	NAS setup, IP address configuration (for GV-IP Devices)	

Note: NAS setup is supported by GV-IP Camera (firmware V3.0 or later) and GV-Target Camera (firmware V1.02 or later), GV-EFD2101/EFD3101/EVD2100/EVD3100 (firmware V1.00 or later).

Playback	
No. of Remote Playback windows	1
Playback Mode	Snapshot, PIP, PAP
Others	
Language	Bulgarian / English / French / German / Hebrew / Italian / Japanese / Russian

Note: All specifications are subject to change without prior notice.

Options

GV-NAS System	GV-NAS System is a Linux-based, network attached storage device designed to store GV-IP Camera and GV-Target Camera recordings.
---------------	---