



Accessing the Armed Mode of GV-AS Controllers

Article ID: GV4-17-10-31-al

Release Date: 10/31/2017

Revised Date: 04/27/2018

Applied to

GV-AS210 / 2110 / 2120 Firmware V2.11 or later

GV-AS410 / 4110 / 4111 Firmware V2.11 or later

GV-AS810 / 8110 / 8111 Firmware V2.11 or later

GV-ASManager V5.0.1.0 or later

GV-RK1352 Reader

Note: This document is dedicated to Texecom Intruder Alarm System.

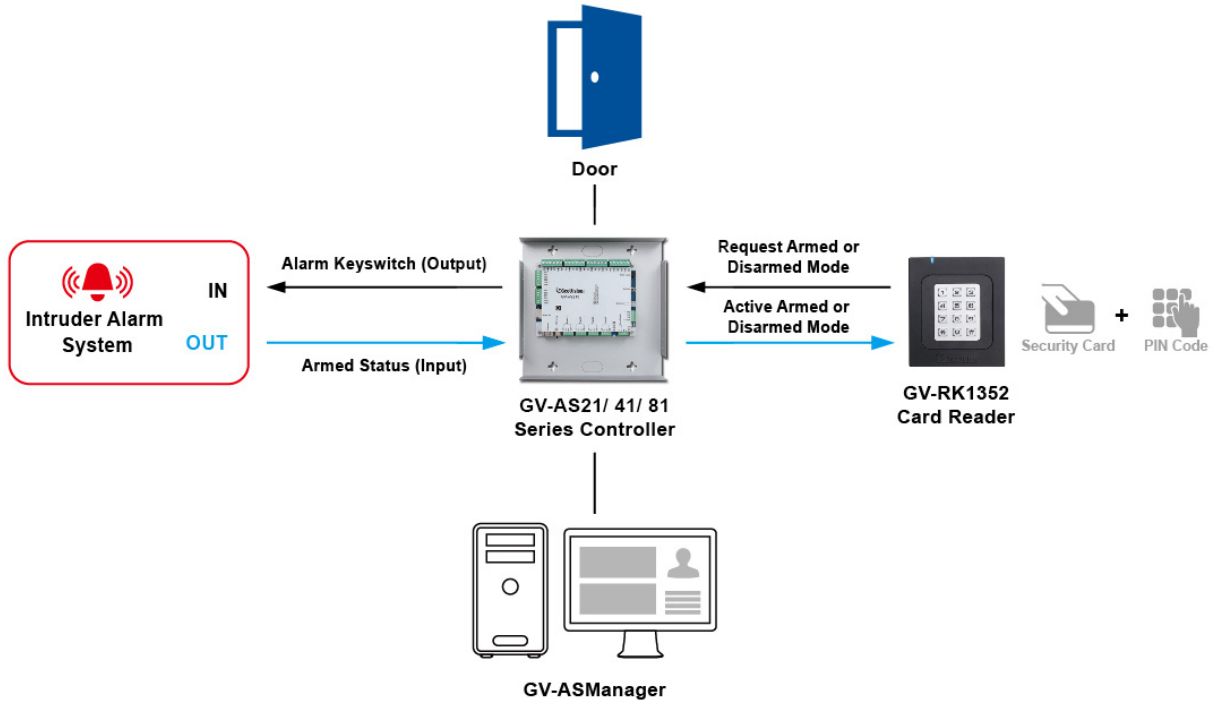
Contents

1. Enabling the Armed Mode.....	3
1.1 Defining the Output function	3
1.2 Defining the Input function.....	4
1.3 Adding a Security Card.....	5
2. Disabling the Armed Mode.....	8



Summary

During the Armed Mode, no cards can be granted access. To enable the Armed Mode, you need to define the output and input functions of a GV-AS21 / 41 / 81 series Controller and add a Security Card on GV-ASManager. After the setup is complete, present a security card and then enter the respective PIN code on the reader to arm or disarm the unit.

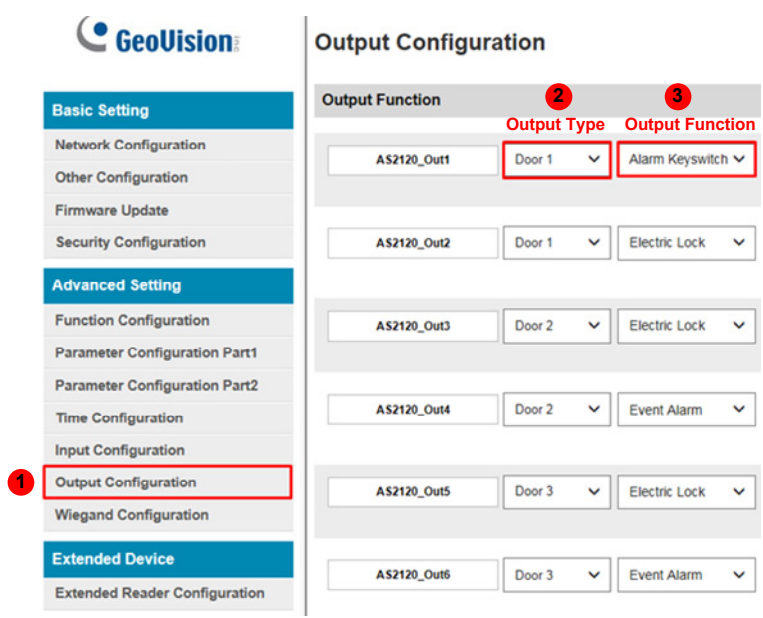




1. Enabling the Armed Mode

1.1 Defining the Output function

1. In the left menu of your GV-AS Controller's Web interface, click **Output Configuration** to define the output function.

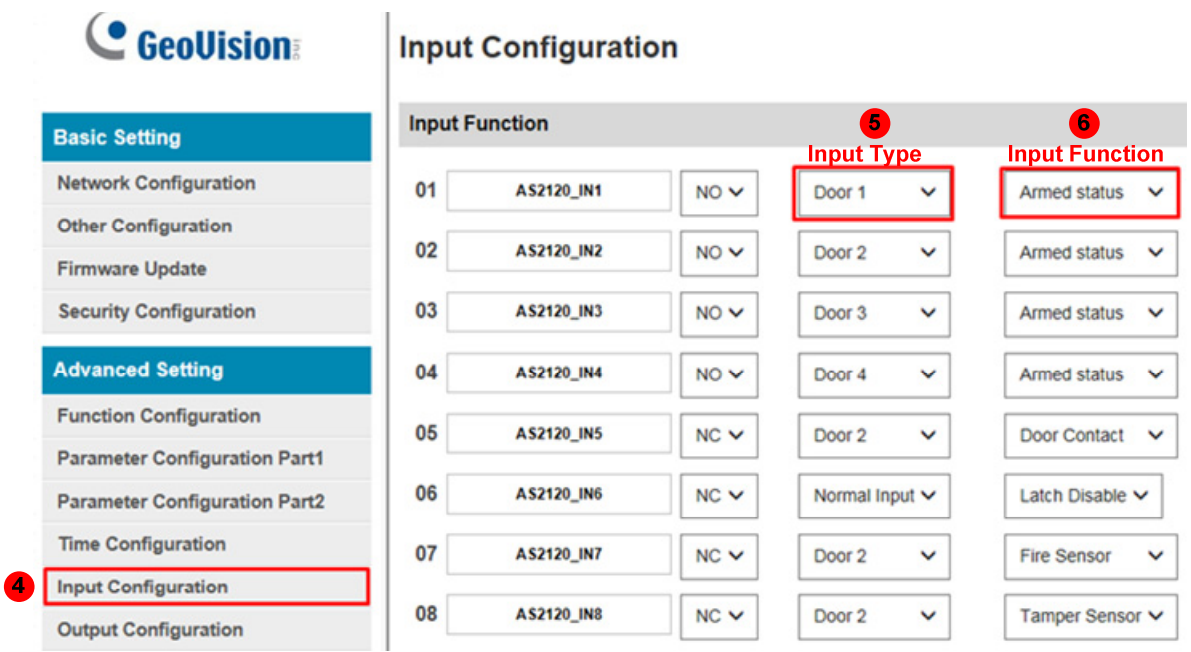


2. Set the Output Type to **Door #** associated with this output.
3. Select **Alarm Keyswitch** as the Output function. The output will be triggered upon the correct PIN code and security card being presented to the reader.



1.2 Defining the Input function

4. Click **Input Configuration** to define the input function.



Input Configuration				
			5	6
			Input Type	Input Function
01	AS2120_IN1	NO	Door 1	Armed status
02	AS2120_IN2	NO	Door 2	Armed status
03	AS2120_IN3	NO	Door 3	Armed status
04	AS2120_IN4	NO	Door 4	Armed status
05	AS2120_IN5	NC	Door 2	Door Contact
06	AS2120_IN6	NC	Normal Input	Latch Disable
07	AS2120_IN7	NC	Door 2	Fire Sensor
08	AS2120_IN8	NC	Door 2	Tamper Sensor

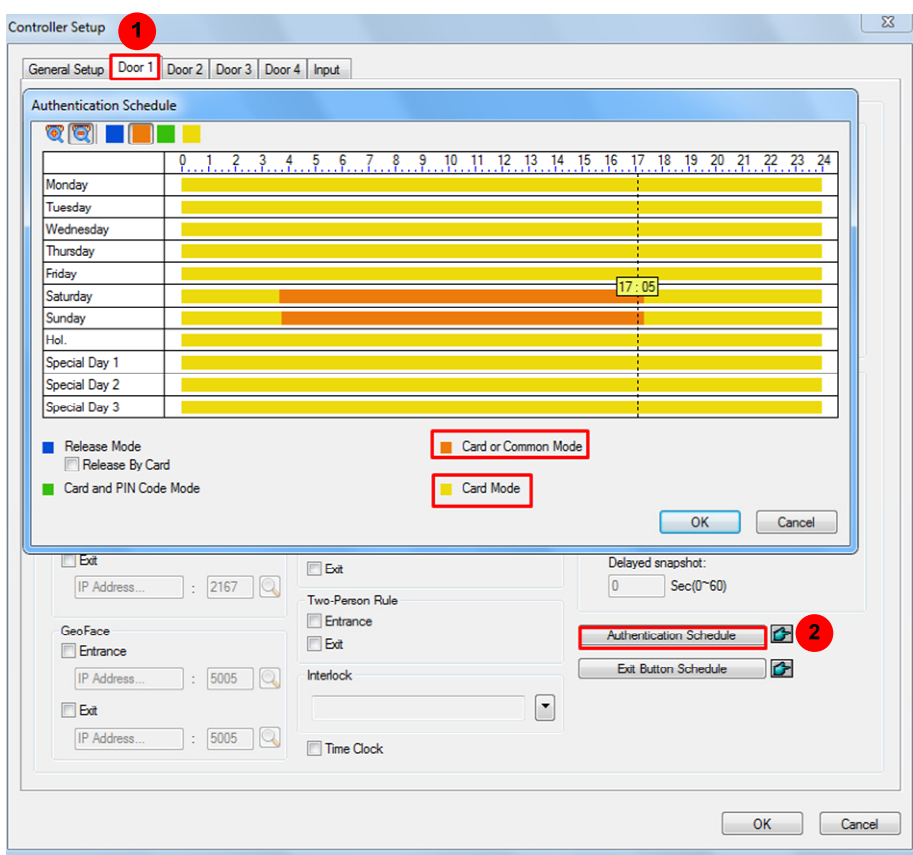
5. Set the **Input Type** to be the same as the Output Type in Step 2.

6. Select **Armed status** as the input function. The controller door will enter the Armed Mode where no cards can be granted access upon the input trigger.



1.3 Adding a Security Card

7. You must define the door and be assigned a security card first to enter the Armed Mode.
 - A. To set the door to work with the Armed Mode, click the **Door** tab of the Controller Setup dialog box.



- B. Click **Authentication Schedule** and specify the access mode to either **Card Mode** or **Card or Common Mode** at different periods of time to trigger the output function.

Note: The output function cannot be triggered to send the Armed status under the **Card and PIN Code Mode**.



- C. To add a security card, on the New a Card / Edit the Card dialog box, set the Card Type to **Security** and enter a four-digit PIN code for the card.

Pin Code: [••••]

Card Type: [Security]

Access Group: [User Define]

Controller 1	
Door 1	24-hour access
Door 2	24-hour restricted

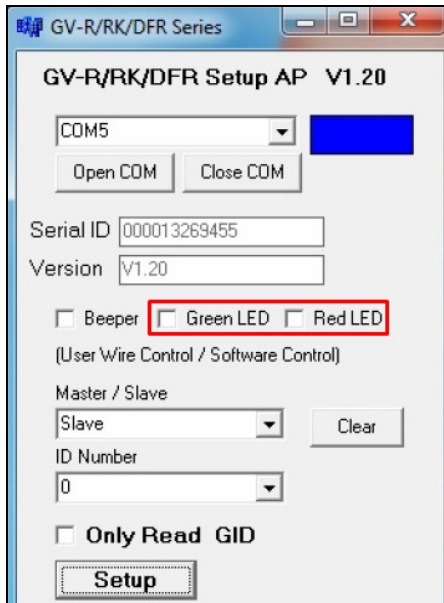
- D. Assign the security card to an access group using the Access Group drop-down list. For details, see *4.5 Setting Access Groups* in the *GV-ASManager User's Manual*.

8. To enable the Armed Status on the GV-AS Controller, present the security card to the reader and then enter the PIN code.

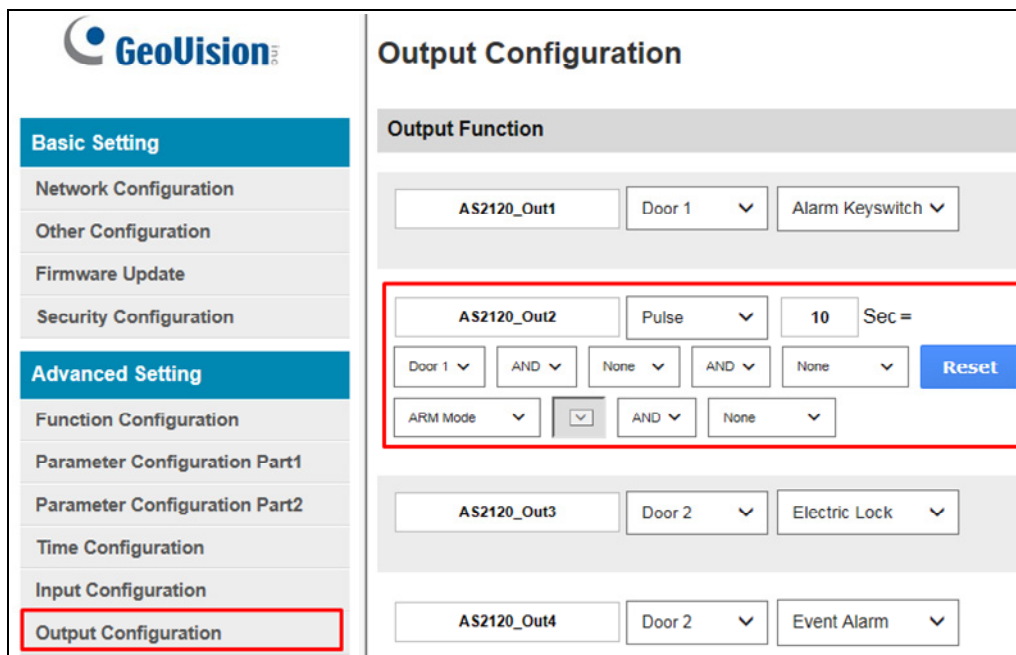


Note: You can identify the Armed Status from the color change in the GV-RK1352 Card Reader's LED, with green / red indicating entering Armed Status and blue standby mode. After connecting the control wires of the reader's LEDs to the outputs on GV-AS Controller,

- i. Enable the external controls of LED on **GV-R/RK/DFR Config AP**.



- ii. Go to the **Output Configuration** page on the Controller's web interface. Set **Pulse** to specify the number of seconds to trigger LED when the output condition, **ARM mode**, is entered.





2. Disabling the Armed Mode

Under the Armed Mode, present the card and then enter the PIN code on the keypad to disarm the unit.

Note: If for any reason the intruder alarm system is not responding correctly, you can temporarily disable the Armed Mode. Present the security card to the reader, followed by entering the PIN code, five times consecutively. However, if the intruder alarm system is not disarmed within the next five minutes, the controller will return to the Armed Mode.
