



## NATURAL RUDRAKSHA

28 March, 2024

DOC NO.: RDN092133

TRADE NAME ..... Rudraksha  
SHAPE ..... Nut  
DIMENSIONS ..... 19.80x16.55x15.30 mm

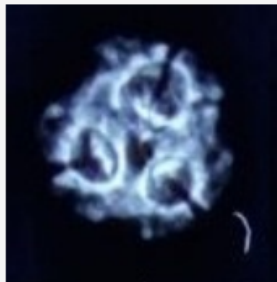
### GRADING SCALE-GJSPC

CARAT WEIGHT ..... 7.57 ct  
COLOR ..... Brown  
X-RAY ..... Performed

### IDENTIFICATION AND ORIGIN

FACES ..... 3 Mukhi  
ORIGIN ..... Nepal  
Microscope- Reticulated & layered skin, Natural fibers  
Description- Loose Bead

### RELATED



### 3 Mukhi :

As per GJSPC Laboratory standard's rudraksha bead having only THREE grooves/mukh/faces starting from the stalk point and reaching to the opposite end of point is considered 3 mukhi rudraksha. The groove should be a naturally formed on the bead and should not be modified or altered by human forces. In general these grooves are present on equal distances.

GJSPC LABORATORY

K-95, West Patel Nagar, New Delhi - 110008 Office:91-9871253335 Verify this report at [www.gjspc.in](http://www.gjspc.in)