



NATURAL RUDRAKSHA

28 March, 2024

DOC NO.: RDN092135

TRADE NAME Rudraksha
SHAPE Nut
DIMENSIONS 19.75x16.42x15.86 mm

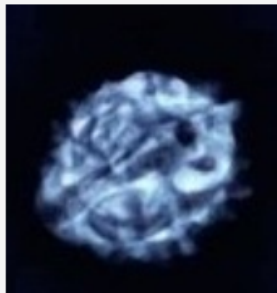
GRADING SCALE-GJSPC

CARAT WEIGHT 9.95 ct
COLOR light Brown
X-RAY Performed

IDENTIFICATION AND ORIGIN

FACES 3 Mukhi
ORIGIN Nepal
Microscope- Reticulated & layered skin, Natural fibers
Description- Loose Bead

RELATED



3 Mukhi :

As per GJSPC Laboratory standard's rudraksha bead having only THREE grooves/mukh/faces starting from the stalk point and reaching to the opposite end of point is considered 3 mukhi rudraksha. The groove should be a naturally formed on the bead and should not be modified or altered by human forces. In general these grooves are present on equal distances.