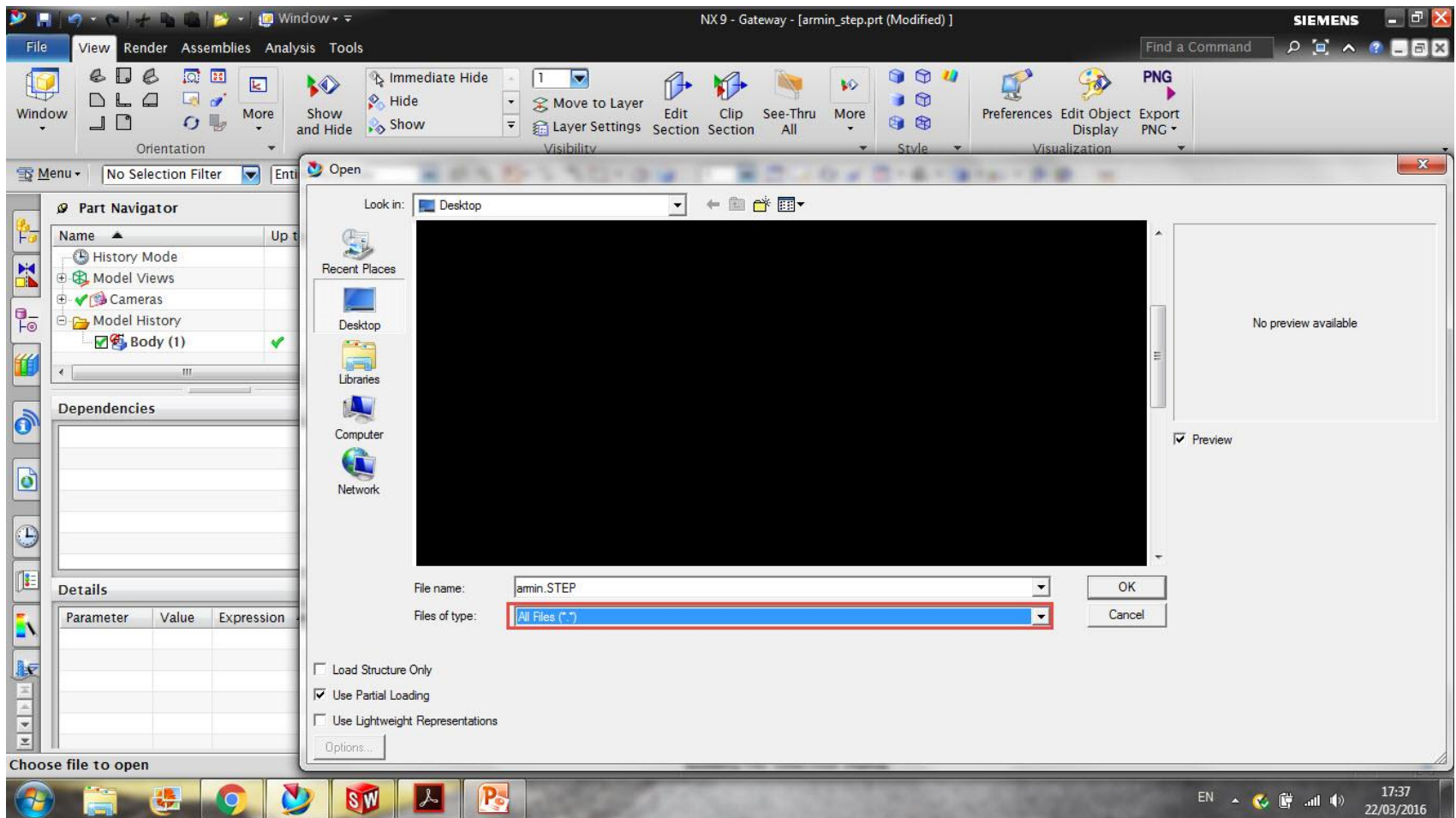
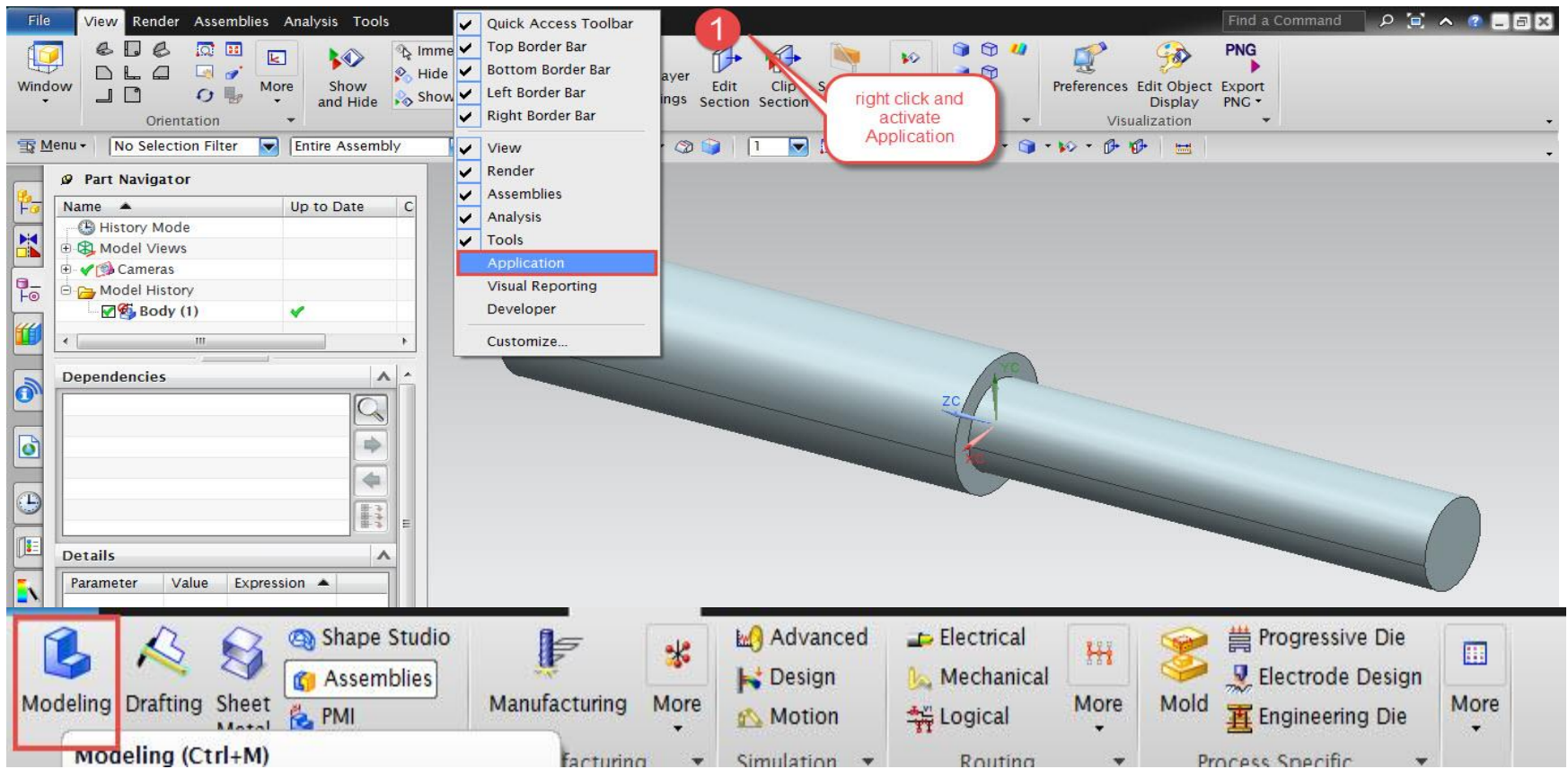


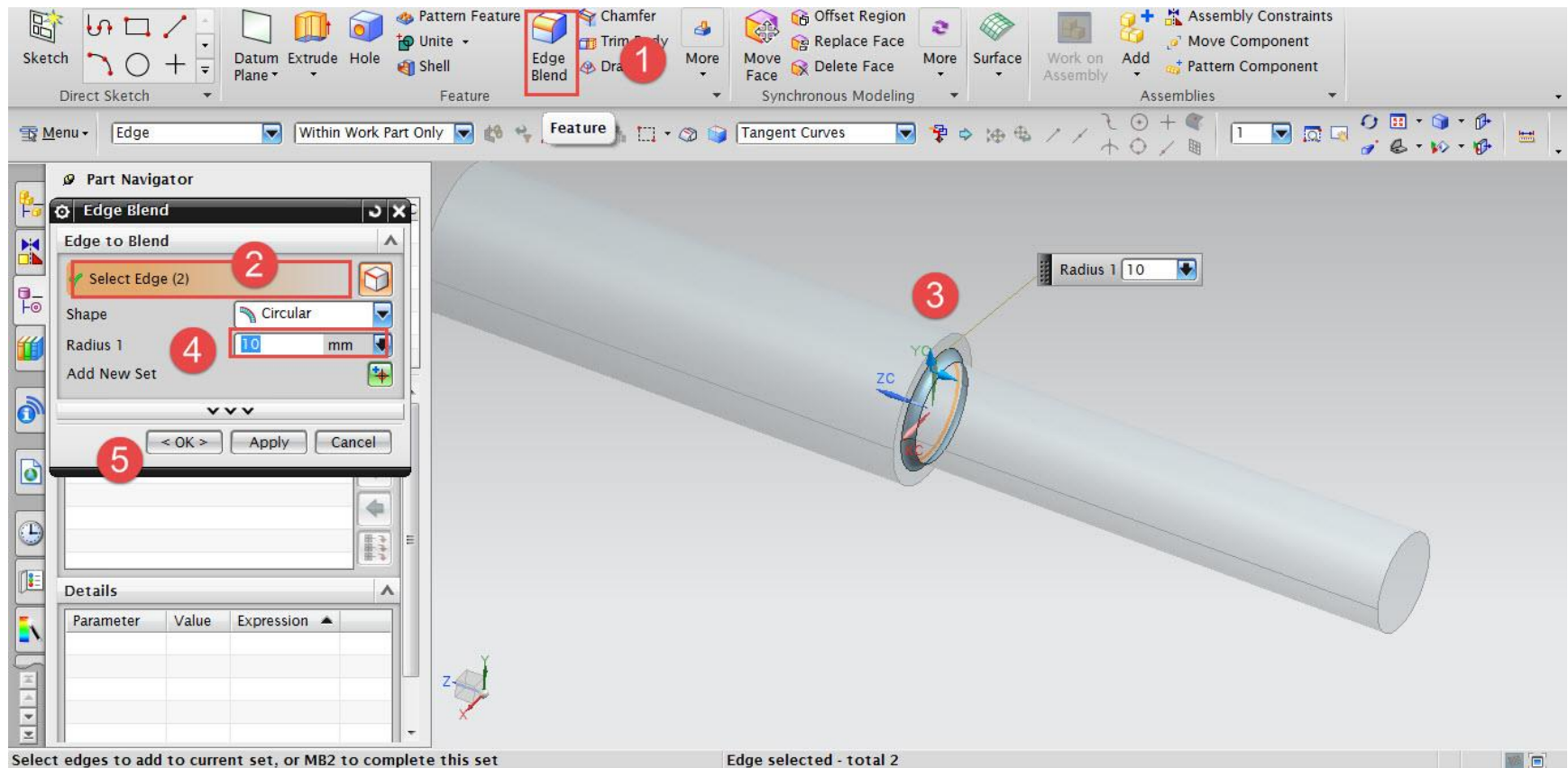
- 1-First design your model in solidworks
- 2- do not apply fillet in solidworks
- 3- save it as step file



- 1- Go to open>> change file type to>> all files
- 2- select your file



- 1- Right click on menu bar and activate application and select modeling
- 2- now you are in modeling environment



After making fillet save file in different name
you can change fillet size and save in different name to make your models for simulation
now you model is ready for simulation