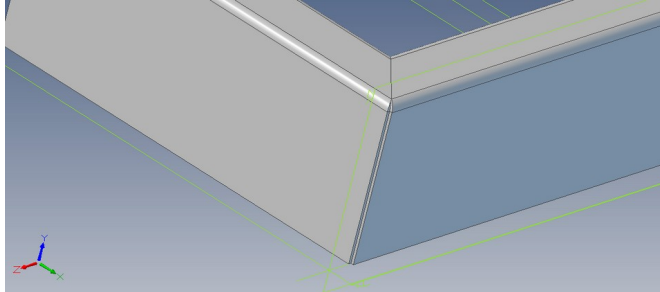
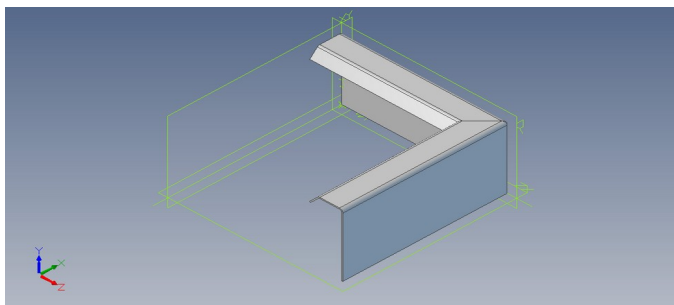


Producing a 90 deg corner for house perimeter

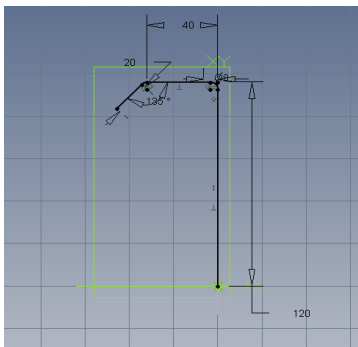
The perimeter of the house is to have a pressed aluminium section that will be made of aluminium sheets cut and folded. This looks at the pattern for the corners.



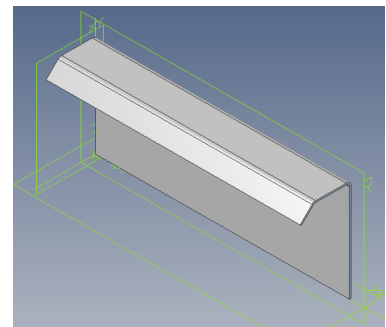
The corner must fit together well to make a neat weld to be easily achieved.



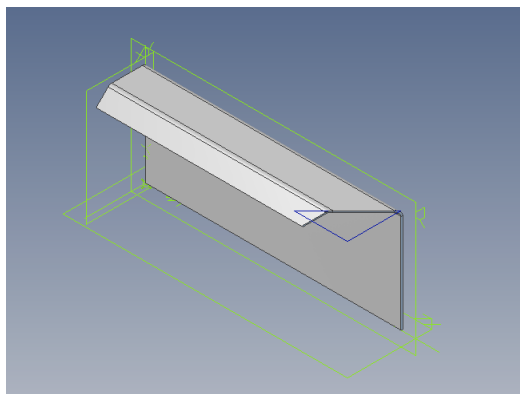
We will use sheet-metal tools so that we will end up with a flat pattern of the required parts. Most CAD applications will have a tool to produce a sheet-metal part from a profile



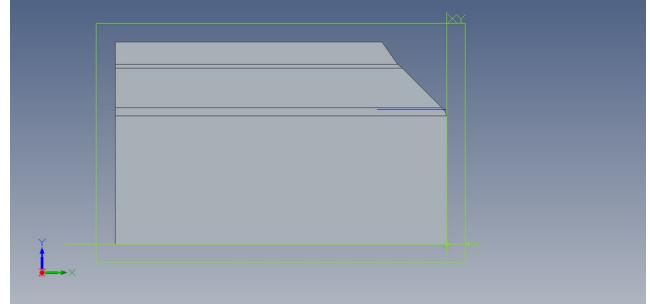
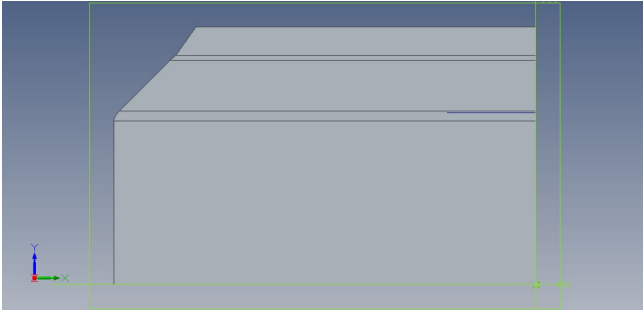
We then extrude the profile to form a section of the perimeter pressing



To make the corner we place a sketch on the top of the pressing and cut through all of the part. We end up with a part similar to below. To assemble corner we will need left an right.



Flatten parts to get pattern and we should end up with something similar to images below/



An averagely skilled trades-person sheet-metal fabricator would be able to take an aluminium sheet and mark out the pattern for this type of corner before you could switch on your computer and open up the CAD software