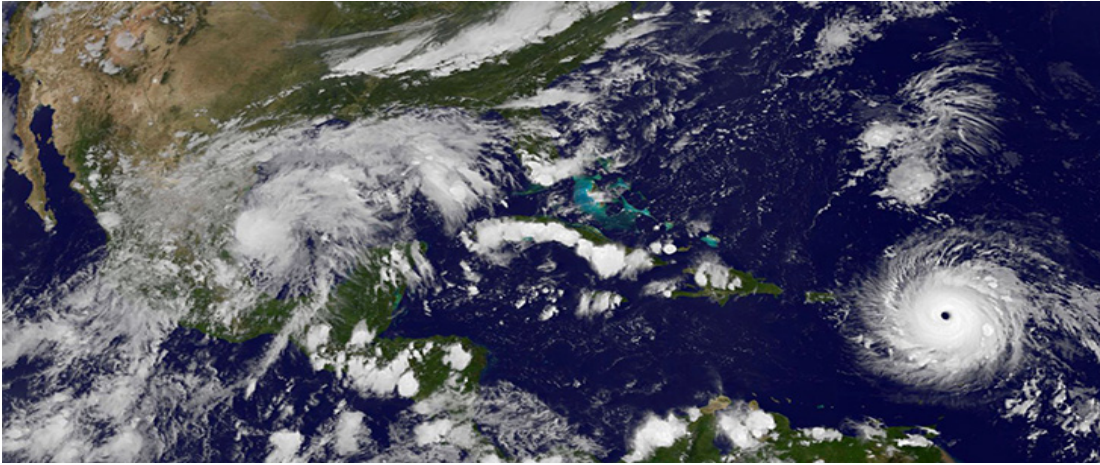


August 2017

Retirement Housing Foundation Matches Donations up to \$50,000 for Hurricane Harvey Relief Efforts



On August 18th, a Category 4 hurricane struck southern Texas causing massive destruction and devastation in Houston and surrounding areas with flooding and tornado activity. For a week afterward, rainfall of unprecedented levels continued to cause additional death and destruction.

RHF's Board of Directors agreed to partner with the United Church of Christ's Emergency USA Fund for Hurricane Harvey Relief, a special fund designated to specifically help the communities and residents impacted by this storm. 100% of the donations received will go directly to efforts supporting essential on-the-ground relief efforts.

For those who choose to respond with a tax-deductible gift through RHF, donations received through September 30, 2017, will be matched up to a grand total of \$50,000 and sent through the Emergency USA Fund. (So if we receive \$50,000, RHF will respond with \$100,000 in total aid.)

To participate in this matching opportunity, you can mail your check, payable to RHF Charitable Foundation noting "Hurricane Harvey" on the memo line, to:

**RHF – Disaster Relief
911 North Studebaker Road
Long Beach, CA 90815**

You can also make an online gift by going to www.rhf.org/donate-to-rhf. We encourage you to share this memo with family, friends, and others.

RHF's matching gift will be in effect through September 30th. Donations received after that date will not be eligible for a match.