

# Wound Kits

## WK100/105/110/120



**Gaumard®**  
Simulators for Health Care Education

Wound Kits are interactive educational systems developed to assist a certified instructor. They are not a substitute for a comprehensive understanding of the subject matter and not intended for clinical decision making.

**User Guide 13.4.1**  
© Gaumard Scientific Company, 2013  
All Rights Reserved  
[www.Gaumard.com](http://www.Gaumard.com)



## Care and Cautions

<b>Overall Warnings .....</b>	<b>5</b>
General .....	5
Cleaning .....	5
Operating Conditions .....	5
Storage Conditions .....	5

## Equipment Set Up

<b>Wound Kit Setup.....</b>	<b>7</b>
Wound Bonding Kit (WK 115).....	7

## Wound Kit Features

<b>Overview.....</b>	<b>9</b>
Wound Kit Features .....	9
Contents .....	9
Emergency Wound Kit (WK100).....	9
Burns Wound Kit (WK 105) .....	10
Trauma Wound Kit (WK 110).....	11
Casualty Wound Kit (WK120).....	13

## Appendix

<b>Consumables and .....</b>	<b>15</b>
<b>Replacements .....</b>	<b>15</b>
Selected Parts List.....	15

---

# Care and Cautions

---

# Overall Warnings

---

## GENERAL

---

- The Wound Kits are constructed of material that approximates skin texture. Therefore, in handling the model, use the same gentle techniques as you would in working with a patient.
- Do not wrap this or any other Gaumard product in newsprint.
- Indelible marks made with ballpoint pens, ink or marker cannot be removed.
- Do not use acetone, Betadine® or any other antiseptic which contains iodine in the Wound Kits. These products could damage or stain the skin of the simulator.
- The bonding agent, used to attach the overlay wounds, is a skin safe silicone that can be used on human skin.

---

## CLEANING

---

- Clean the Wound Kit items after every training session. They should be cleaned with a cloth, dampened with diluted liquid dish washing soap.
- Do not clean with harsh abrasives.
- Do not use povidone iodine on the system
- The Wound Kits are “splash-proof” and water-proof. They can be submerged on water as long as they are not attached to the simulator

---

## OPERATING CONDITIONS

---

Operating the Wound Kits outside these ranges may affect performance:

- Operating temperature: 50° - 95° F (10° - 35° C).
- Humidity: 5%-95% (non-condensing).

---

## STORAGE CONDITIONS

---

- Improper storage may damage the Wound Kits.
- Keep it stored in the box and/or bag provided.
- Do not stack or store heavy materials on top of the box and/or bag.
- Storage temperature: 50° - 85° F (10° - 29° C).
- Humidity: 40%-60% (non-condensing).

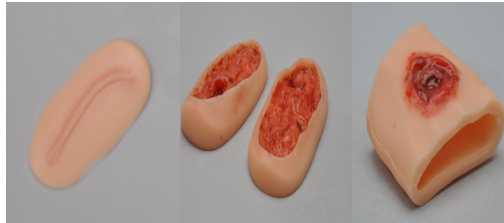
---

# Equipment Set Up

---

# Wound Kit Setup

Most wounds included in these kits are overlay wounds, which need a bonding agent to attach them to the simulator's skin. Exceptions include the round gunshot wound for the hand and wounds to fit intramuscular injection pads on both quadriceps, as shown below.



## WOUND BONDING KIT (WK 115)

The Skin Tite™ silicone adhesive/appliance builder is used to attach the overlay wounds to parts of the existing simulator. The bonding agent is a 2 part silicone mix (Part A and Part B), with a mixing ratio of 1:1 by volume or by weight.

This bonding agent is a skin safe silicone that adheres to the skin and perfectly conforms to all contours. Wounds and appliances will not come off until they are peeled off.

## CONTENTS

This kit includes:



1. Bonding Agent Part A container (x1)
2. Bonding Agent Part B container (x1)
3. Mixing Cup (x1) (needed but not included)
4. Tongue Depressors (use to mix) (x3)
5. Pair of Gloves (x1) (gloves should be used during mixing and placement of overlay wound)

## INSTRUCTIONS FOR USE

1. Pre-clean surface of attachment on the simulator with alcohol wipes
2. Pour the "desired" amount of Part A in the Mixing cup ("desired" amount varies with size of wound)
3. Pour the same amount of Part B in the mixing cup
4. Mix contents using a tongue depressor
5. Apply bonding agent mix as a glue using the tongue depressor on the desired simulator's body part (note that surface should be previously cleaned with alcohol wipes)
6. Place overlay wound on desired part using mild pressure



7. Allow 5 minutes of curing time and verify that excess mix inside mixing cup has cured



8. At the time of detachment simply pull overlay wound and clean used surfaces using diluted alcohol or diluted soapy water

---

# Wound Kit Features

---



# Overview

Wound Kits assist health professionals in training exercises simulating community disasters, disasters of war, and multiple burn injury types.

## WOUND KIT FEATURES

- Sized to fit Gaumard adult simulators
- Specially formulated silicone provides realism not seen in vinyl casualty kits
- Tough and resilient
- Specific light, medium, or dark skin tone kits are available at no extra charge.

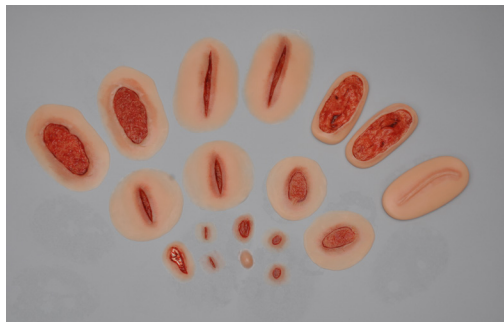
## CONTENTS

Four different wound kits are available. These include:

- Casualty Wound Kit
- Emergency Wound Kit
- Trauma Wound Kit
- Burns Wound Kit

## EMERGENCY WOUND KIT (WK100)

The Emergency Wound Kit assists in training exercises simulating community disasters like bus accidents or building explosions. It permits realistic practice required for the proper care, management, and transportation of the injured.



This wound kit includes 11 wound types and 18 wounds in total.

Wound types are described below

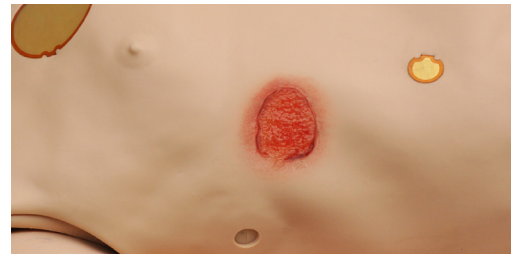
## SKIN ABRASIONS

There are three types of skin abrasions (scrapes) with 6 wounds in total:

- 2 Small size skin abrasions, which are intended to be used on the chest, back, abdomen, arms, and legs.



- 2 Medium size skin abrasions, which are intended to be used on the chest, back, abdomen, and legs.



- 2 Large size skin abrasions, which are intended to be used on the chest, back, abdomen, and legs.



## SKIN INCISIONS

There are three types of skin incisions (cuts) with 6 wounds in total:

- 2 Small size skin incisions, which are intended to be used on the chest, back, abdomen, arms, and legs.



- 2 Medium size incisions, which are intended to be used on the chest, back, abdomen, and legs.



- 2 Large size incisions (elongated knife wounds), which are intended to be used on the chest, back, abdomen, and legs.



## LACERATIONS

There are two types of lacerations with 3 wounds in total.

- 1 Boneless laceration, which is intended to be used only on the head.



- 2 Deep lacerations (wounds) on thigh, which are intended to be inserted into the intramuscular injection site on the thigh.



## CONTUSION

There is one type of contusion:

- 1 Contusion with inflammation, which is intended to be used on the head



## BONE FRACTURE

There is one type of bone fracture:

- 1 Compound bone fracture on the right side of the mandible, which is intended to be used only on the head.



## SUTURE

There is one type of suture (training wound):

- 1 Thigh suture, which is intended to be inserted into the intramuscular injection site on the thigh for training of suture removal techniques.



## BURNS WOUND KIT (WK 105)

These wounds simulate multiple burn injury types, allowing students to assess the burn type to prepare a treatment plan and instructors to measure performance of burn management.

There are 5 wound types and 10 wounds in total



The burn types are described below

---

#### BURN OF HAND

---

2 Burns of hand 2<sup>nd</sup> & 3<sup>rd</sup> degree



---

#### BURN OF FOREARM

---

2 Burns of forearm 2<sup>nd</sup> & 3<sup>rd</sup> degree



---

#### BURN OF FACE

---

4 Burns of the face 2<sup>nd</sup> & 3<sup>rd</sup> degree

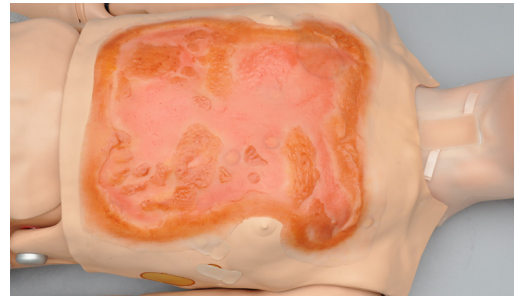


---

#### BURN OF CHEST

---

1 Burn of chest 2<sup>nd</sup> & 3<sup>rd</sup> degree

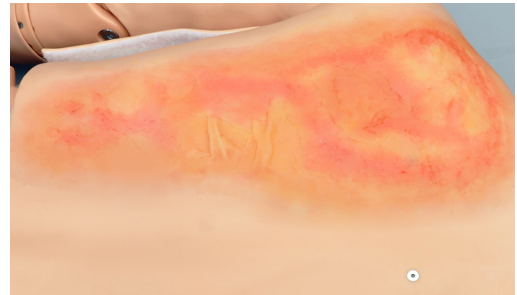


---

#### BURN OF BACK

---

1 Burn of back 2<sup>nd</sup> & 3<sup>rd</sup> degree



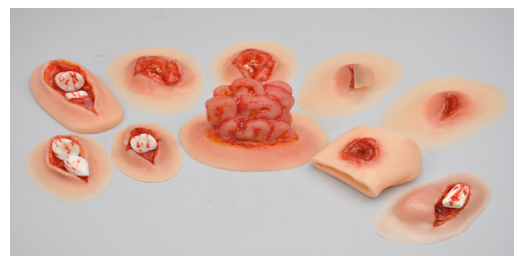
---

#### TRAUMA WOUND KIT (WK 110)

---

These trauma wounds will assist in training exercises for military, government responders, and anyone providing treatment to victims of disasters and war. Detailed sculpting and painting create realism for the training of medics responding to these events.

There are 8 wound types and 10 wounds in total.



Wound types are described below

---

#### GUNSHOT WOUND

---

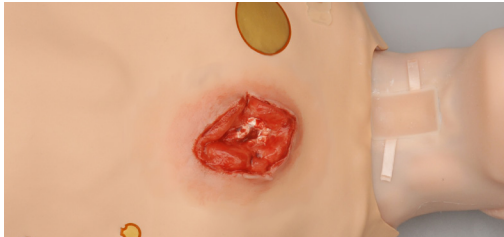
There are two types of gunshot wounds with 3 wounds in total:

- 1 Round gunshot wound, which is intended to be used on the hand.





- 2 Large caliber wounds entry and exit, which are intended to be used on the chest and legs.



- 1 Open Tibia fracture, which is intended to be used on the lower leg



## BONE FRACTURE

There are four types of bone fractures with 4 wounds in total:

- 1 Open Humerus fracture, which is intended to be used on the upper arm



- 1 Open Radius/Ulna fracture, which is intended to be used on the lower arm



- 1 Open Femur fracture, which is intended to be inserted into the intramuscular injection site on the thigh

## PUNCTURE

There is one type of puncture wound with 2 wounds in total:

- 2 Object embedded on thigh wounds, which are intended to be used on the upper leg (thigh).



## PROTRUDING INTESTINE

There is one type of abdominal wound:

- 1 Abdominal/protruding intestine incision, which is intended to be used on the abdomen.



---

## CASUALTY WOUND KIT (WK120)

---

This kit contains everything necessary to stage incredibly realistic casualty scenarios. This 23-piece kit has burns, lacerations, compound fractures, gunshot wounds, incisions, abrasions, and more.

This casualty kit combines wound types from the three previously described kits. There are 10 wound types from the Emergency Wound Kit, 3 from the Trauma Wound Kit, and 1 from the Burns Wound Kit.

This kit has 14 wound types and 23 wounds in total

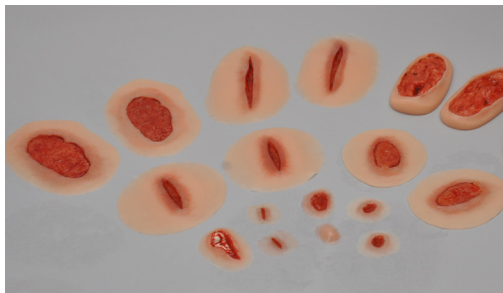


---

## CONTENTS

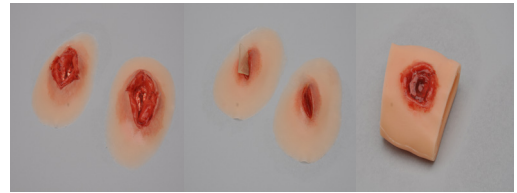
---

**10 wound types and 17 wounds in total from the Emergency Wound Kit**



- 2 Small size skin abrasions (scrapes)
- 2 Medium size skin abrasions (scrapes)
- 2 Large size skin abrasions (scrapes)
- 2 Small size skin incisions (cuts)
- 2 Medium size skin incisions (cuts)
- 2 Large size skin incisions (elongated knife wounds)
- 1 Boneless laceration of the forehead
- 2 Deep lacerations (wounds) on thigh
- 1 Contusion to the head with inflammation
- 1 Compound bone fracture on right side of the mandible

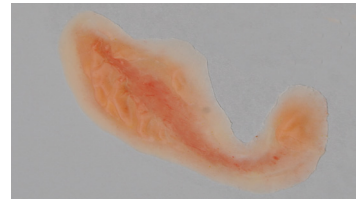
**3 wound types and 5 wounds in total from the Trauma Wound Kit**



- 2 Large caliber wounds entry and exit
- 2 Object embedded on thigh wounds
- 1 Round gunshot wound

**1 wound type and 1 wound in total from the Burns Wound Kit**

- 1 Burn of face



---

# Appendix

---

# Consumables and Replacements

## SELECTED PARTS LIST

Contact Gaumard Scientific for a **complete list** of consumable and replacement parts and their prices.

Item ID	Description
WK100.001 WK120.001	Skin Incision (cut) small size
WK100.002 WK120.002	Skin abrasion (scrape) small size
WK100.003 WK120.003	Skin Incision (cut) Medium size
WK100.004 WK120.004	Skin abrasion (scrape) medium size
WK100.005 WK120.005	Elongated knife wound
WK100.006 WK120.006	Skin abrasion (scrape) large size
WK100.007 WK120.007	Boneless laceration of the forehead
WK100.008 WK120.008	Contusion to the head with inflammation
WK100.009 WK120.009	Compound bone fracture right side of the mandible
WK100.010 WK120.010	Deep wound on thigh
WK100.011	Thigh suture

WK105.001	Burn hand 2&3 degree
WK105.002	Burn forearm 2&3 degree
WK105.003 WK120.014	Burn of face
WK105.004	Burn of chest 2&3 degree
WK105.005	Burn of back 2&3 degree
WK110.001 WK120.011	Round gunshot wound
WK110.002 WK120.012	Large caliber wound entry and exit
WK110.003	Open Humerus fracture
WK110.004	Open Radius/Ulna fracture
WK110.005	Open Femur fracture
WK110.006	Open Tibia fracture
WK110.007 WK120.013	Object on thigh
WK110.008	Abdominal/protruding intestine incision



**Gaumard®**  
Simulators for Health Care Education

## Contact Us

**E-mail Technical Support:** [support@gaumard.com](mailto:support@gaumard.com)

Before contacting Tech Support you must:

1. Have the simulator's Serial Number
2. Be next to the simulator if troubleshooting is needed.

**E-mail Sales and Customer Service:** [sales@gaumard.com](mailto:sales@gaumard.com)

**Phone:** Toll-free in the USA: (800) 882-6655

Worldwide: 01 (305) 971-3790

**Fax:** (305) 667-6085

**Post:** Gaumard Scientific

14700 SW 136 Street

Miami, FL 33196-5691

USA

**Office hours:** Monday-Friday, 8:30am - 4:30pm EST (GMT-5, -4 Summer Time)

### General Information

Gaumard®, ZOE®, Michelle®, Mike®, PEDI®, Susie Simon®, Susie®, Simon® Code Blue®, SIMA Models®, SIMA GYN/AID®, Virtual Instruments®, Codemaker®, Code Blue®, NOELLE®, Simulation Made Easy™, HAL®, CPRLink™, Zack™, RITA™, Chloe™, Seatbelt Susie™, Krash Kids™, Premie™, GIGA®, Omni™, SmartSkin™ are Trademarks of

© Gaumard Scientific Company, 2013

All rights reserved.

Gaumard®, NOELLE®, HAL® are trademarks of Gaumard Scientific Company, Inc.

Patented; Other Patents Pending

Always dispose of this product and its components in compliance with local laws and regulations.