



HAL[®] S1000

Advanced Life Support
and Emergency Care
Wireless Patient Simulator

- Intubatable and programmable airway
- Defibrillate, cardiovert, and pace using real equipment
- Needle decompression and chest tube
- eCPR™ - CPR effectiveness monitoring and smart trainer
- Includes HAL Simulation Learning Experiences™ scenario package
- Wireless and tetherless

HAL® S1000 | Advanced Life Support and Emergency Care Wireless Patient Simulator

Simply the best valued patient simulator for ALS and emergency response training.



● ● Skin tone options available at no extra charge

UNI® simulator control interface included

The UNI® simulator control software provides you with all the tools you need to deliver a rich simulation experience from one intuitive interface. UNI® features precise touch-based controls, task automation, real-time feedback, and automatic data capture tools designed to operate seamlessly during even the most complex scenarios.

- Drive scenarios on-the-fly or using preprogrammed scenarios
- Monitor and analyze CPR quality performance in real-time
- Precise physiological control over cardiac, breathing, and circulation parameters
- Export CPR performance reports for debriefing



Perform chest compression and ventilation

Compress the chest hard and fast; feel the realistic recoil after each compression.



Pulse sites synchronize with BP and heart rate

Carotid, femoral, and radial pulses operate continuously and are synchronized with the ECG.



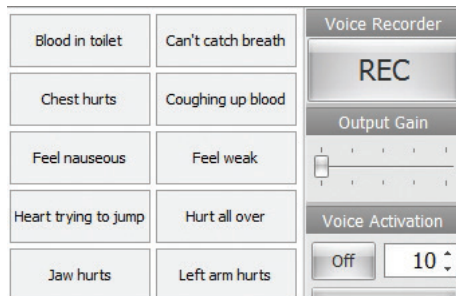
Intubatable and programmable airway

Use NP/OP/ET/LMA tubes. Program tongue edema and laryngospasm.



Defibrillate, cardiovert, & pace using real equipment

Defibrillate, cardiovert, and pace using real EMS equipment and see HAL's ECG on your real AED.



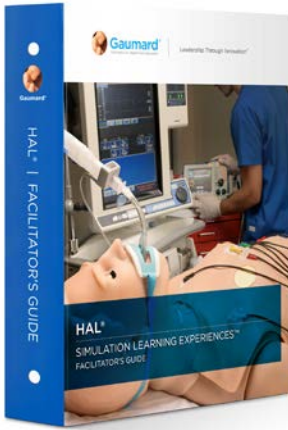
Wireless streaming voice

Be the voice of HAL® and hear caregiver responses. Create and store vocal responses or select from 80+ pre-recorded phrases.



Wireless and tetherless

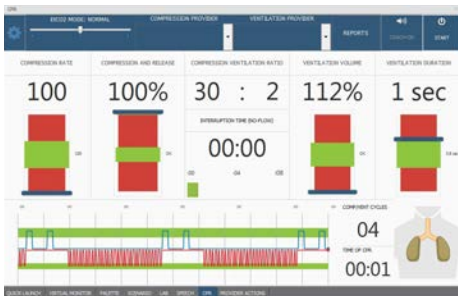
HAL® is completely self-contained and wireless and fully operational on battery for up to 5 hours.



Includes the new HAL® Simulation Learning Experiences™ package

The new HAL® Simulation Learning Experiences (SLEs) provide you with a library of ready-to-use, evidence-based scenarios designed to help you maximize participant's learning through outcome-focused simulated clinical patient encounters. The package includes 10 SLEs complete with a facilitator's guidebook for planning, setting up, and facilitating each learning experience:

- Acute Anterolateral Myocardial Infarction
- Acute Sepsis Related To Diabetic Ulcer
- Atrial Fibrillation
- COPD Exacerbation
- Diabetic Ketoacidosis
- Opioid Overdose
- Pulmonary Embolism
- Sepsis Related To Pneumonia
- Severe Sepsis
- Supraventricular Tachycardia



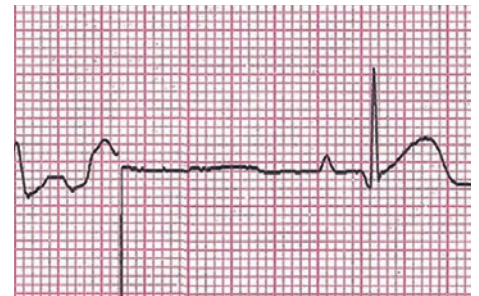
Real-time CPR feedback

Monitor compression depth and rate, ventilations, “no-flow” time, and number of cycles. Export performance reports for debriefing.



Bilateral IV arms

Bilateral IV training arms that can be used for bolus or intravenous infusions as well as for draining fluids.



View dynamic ECG

View dynamic ECG on a real ECG monitor. AED shown converting HAL's ventricular fibrillation.



Spontaneous chest rise and realistic heart and lung sounds

Program variable respiratory sounds and heart and lung sounds.



Needle decompression and chest tube

HAL® supports bilateral needle decompression and chest tube placement.



Surgical trachea

Realistic surgical trachea allows tracheostomy or needle cricothyrotomy.


HAL® S1000 | Advanced Life Support and Emergency Care Wireless Patient Simulator

Features

- Tetherless and wireless; fully responsive during transport ¹
- Fully operational on internal battery power for up to 5 hours ²
- Supports common patient positions including Fowler's, supine, and sitting
- Wireless streaming voice; be the voice of HAL®
- Includes HAL Simulation Learning Experiences™ 10 scenario package
- UNI® laptop PC included
- Supports tracheal intubation using standard ETTs and supraglottic airway devices
- Program tongue edema or laryngospasm
- Use an ET tube or LMA
- Sensors detect depth of intubation
- Unilateral chest rise with right mainstem intubation
- Multiple upper airway sounds synchronized with breathing
- Realistic surgical trachea allows tracheostomy or needle cricothyrotomy
- Control rate and depth of respiration and observe chest rise
- Ventilations measured and logged
- Gastric distension with excess BVM ventilation
- Select independent left and right lung sounds
- Chest rise and lung sounds are synchronized with selectable breathing patterns
- Supports assisted ventilation, including BVM.
- Unilateral chest rise simulates tension pneumothorax
- Multiple lung and breath sounds with volume control
- Multiple heart sounds, rates, and intensities
- Chest compressions are measured and logged
- Blood pressure can be taken on left arm using a modified cuff, palpation, or auscultation.
- Bilateral needle decompression at second intercostal

- Bilateral carotid and femoral pulses, plus left radial pulse operate continuously
- Bilateral, lower arm IV access
- Intraosseous access at right tibia
- Pulse strengths vary with HAL's blood pressure, and pulses are synchronized with the ECG
- Detects placement of oxygen saturation sensor on index finger
- HAL® has conductive skin regions so you can apply real electrodes and AED pads
- Defibrillate, cardiovert, and pace using real EMS equipment and see HAL's ECG on your AED
- Program HAL's response to defibrillation
- View dynamic ECG, in your real ECG monitor
- Links with optional audio-visual system that integrates the event log with feeds from camera and the simulated patient monitor for comprehensive debriefing
- Programmable bowel sounds
- Programmable central cyanosis

HAL® S1000

S1000.M2.PK 
S1000 HAL® Adult Patient Simulator, Laptop PC, UNI® license, SLE scenario package, battery charger, BP cuff, surgical trachea kit, needle decompression sites, accessories, user manual. One-Year Limited Warranty. Extended service plans available. Skin tones available at no extra charge. Patented; other patents pending.

UNI® Tablet PC Upgrade

S1000.215
Upgrade HAL's control laptop to a lightweight tablet PC for increased mobility. Package includes: Microsoft Surface Pro, stylus pen, and rugged protective case. Option only available at time of initial purchase.

CO₂ Exhalation

S1000.078
Real CO₂ exhalation. 10 programmable levels of CO₂ output. Option only available at time of initial purchase.

Urinary Catheterization

S1000.070

Internal bladder and catheterizable male genitalia. Option only available at time of initial purchase.

GAUMARD Vitals™ Bedside Virtual Monitor

S1000.001.R2

GAUMARD Vitals™ bedside virtual monitor. One GAUMARD Vitals patient simulator license.

GAUMARD Vitals™ Portable Virtual Monitor

S1000.002

GAUMARD Vitals™ portable virtual monitor. One GAUMARD Vitals patient simulator license.



Care In Motion™ MOBILE Video Debriefing System

CIM.PK

Care In Motion Tablet PC, 3 Battery-powered HD wireless cameras, 3 adjustable camera grips, transport case. One-Year Limited Warranty. Extended service plans available.

Request a Quote

www.gaumard.com/quote
sales@gaumard.com
Toll-Free USA & Canada
1.800.882.6655
Worldwide 305.971.3790



Gaumard®
Simulators for Health Care Education