



101 Irving Terrace Bloomfield | New Jersey

www.101IrvingTer.com

Resting on nicely landscaped corner property and located on one of Bloomfield's charming treelined streets, this brick ranch illustrates just what 'move-in condition' really means. Positioned to take full advantage of all this bustling community has to offer, this is a home that is perfect for today, while offers exceptional expansion potential for tomorrow.

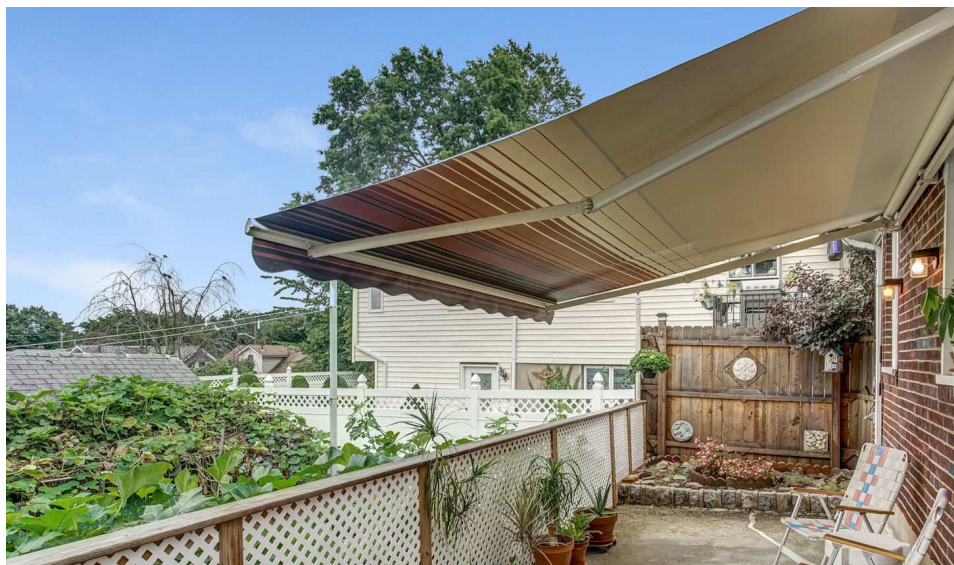
Step inside where you are greeted by a generous foyer with exposed brick walls and a French door entry. Once inside, you are impressed by the easy flow as the spacious living room spills into the formal dining room, while sunlight reaches in to nearly every corner. The kitchen sparkles with white cabinets and appliances. There is space for your breakfast table, a door to the deck and stairs to the patio nearby. Bedrooms are nestled away from the main living areas, well served by the updated hall bath. A walk-up attic and full walkout basement provide substantial storage capacity along with the potential to create additional finished space.

Outside, the patio and awning welcome al fresco dining and entertaining. Lovely inside and out, this is a place you'll be proud to call home.





WONDERFUL SPACE, A GREAT FLOW AND PRETTY SETTING



HIGHLIGHTS

IMPROVEMENTS

- Painted in 2017
- Renovated hall bath in 2014
- Composite deck and awning in 2010
- New flooring in the master bedroom

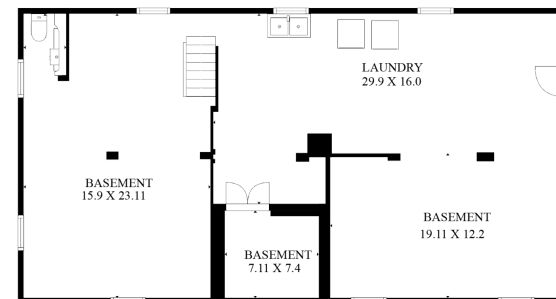
LIFESTYLE

- Beautifully finished main level with an easy flowing floor plan and comfortable bedrooms
- Walk-up attic with the potential for additional finished space
- Oversized foyer with exposed brick walls and French door entry
- Full walkout basement with substantial storage capacity and the option for finishing
- Interior features include 9-foot ceilings, generous living room and dining room, overhead fans in both rooms, a versatile decor and plenty of natural light
- Eat-in kitchen features a tile floor, ample cabinet storage and counter space, ready access to appliances, opens to the dining room, door to the deck and stairs to the patio

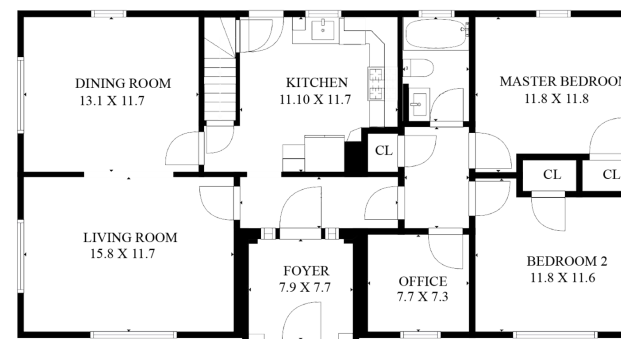
EXTERIOR

- Brick exterior
- Driveway with additional parking
- Detached garage with automatic garage door opener
- Patio with awning
- Central location close to shopping, recreation, houses of worship and NYC transportation
- Easy access to major highways, business centers and Newark Liberty International Airport
- Ranch
- 2 Bedrooms, 1 Full and 1 Half Baths
- Built: 1928 / Renovated: 1992 / Updates: 2010-2017
- Corner Lot: 40 x 100

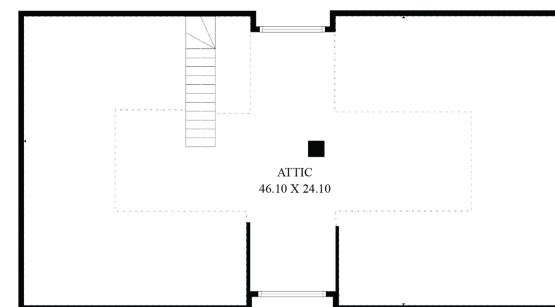
Eric Schwartz
Broker - Sales Associate
Cell: 201-953-9994
eric@theschwartzteam.com
NJAR Circle of Excellence
Platinum Level: 2013-2017
Weichert Million Dollar Club 2010-2017
Weichert Chairman of the Board Club 2010-2017



LOWER LEVEL



FIRST FLOOR



SECOND FLOOR

Weichert®

Weichert, Realtors® | 460 Prospect Avenue | West Orange, NJ | 973-731-6064

Copyright© 2003 Visual Marketing & Design. All rights reserved. Information contained in this brochure is deemed reliable but not guaranteed and should be independently verified by the buyer(s). Real Estate Brokers and agents acting on their behalf for creating this brochure are not responsible for typographical errors, misprints or misrepresentations and are therefore held totally harmless.

