

FreeDrumLessons.com

- Rock Drumming Play Along #6 -

Build the energy with a crescendo right in the beginning. The fill that follows is a double bass fill.

Intro Fill



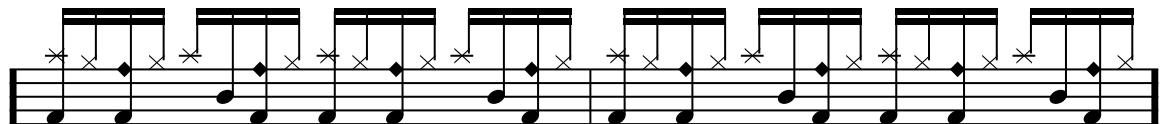
The main riff and verse are the same beat just with a different hi-hat feel. Open the hi-hats for the intro riff and close the hi-hats for the verse.

Intro / Verse 1



The chorus is a tricky 16th note pattern. The diamond shape is a ride bell stroke.

Chorus 1



This is the same idea as verse 1, where you play the intro again then break into the verse.

Verse 2

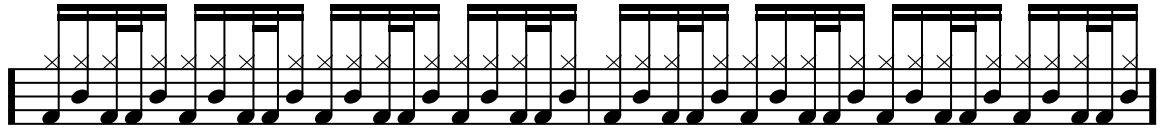


Chorus 2



Open hi-hat pattern with a punk rock double time feel.

Solo



This chorus is different then the others, with a 8th note feel.

Chorus 3



Play the main riff again with an open hi-hat feel. Make sure you hit the 4 shots at the end with the guitars.

Ending

