

Life under ground

Cosmic mystery and physical reality

Petio Hristov

I study the Universe by working and solving the materials in ancient books. In this I use laws discovered by myself such as the Law of Unity, the Law of Conversion, the Law of Time etc., and all these laws give the basis of a General theory of Unity [1]. This new outlook upon the knowledge encrypted in ancient writings and images gives me the opportunity to find the hidden meaning in some myths and illustrations left from different ancient cultures. Comparing them I noticed that they complement each other and also that there are some contemporary scientific discoveries which confirm the knowledge of some ancient civilizations.

In this exposition I will use a partial model of the Universe, which is included in the General theory of Unity. According to this theory the development of the Universe is organized in different cycles or circulations, each with its own time.

To understand the processes in the Universe, I have “divided” it into separate levels. We can imagine these levels inside one another, much like the Russian wooden dolls matryoshka.

The focus will be on the path which humanity is about to take in the future, based on that which has already happened. Naturally this path is filled with perils, which of course can be overcome by us with the necessary wisdom and willpower as our ancestors have done in the past. It is necessary of the scientific researches and breakthroughs to be targeted in the avoidance of the, so frequently mentioned Apocalypse. Remembering the principle of Hermes Trismegistus “That which is up is that which is down. That which is down is that which is up”, we could make out the future. And why not see the Universe as a living plant? A Galactic Plant if you will.

According to the most recent astronomical studies, our Solar system is part of a miniature galaxy called Sagittarius, which the Milky Way is trying to swallow [2]. Once we were part of this miniature galaxy, but now it is torn apart by the powerful gravitational pull of the much larger Milky Way.

A most important discovery of mine is that the Universe in its totality is a living organism. We the people are situated on the third level – the most inner level in the partial model of the Universe, according to my General theory of Unity. The rest of the spherical galaxy Sagittarius along with the Milky Way is part of the so called Galactic Plant – the flower of the Plant. This way it will be easier to imagine what is to follow.

The Galactic Plant grows on a single planet, much like our Earth. This planet is on the second level, which is more external than our own level in the Universe. On this planet there are animals, there are people [3]. Around the Galactic Plant, which we are part of, there are other Galactic Plants, some of which on the same level.

If the people living in England are called Englishman, the people on the planet on which the Galactic Plant grows are called demigods in the ancient text (*classical mythology*) or Deva (*Deva – a Sanskrit word of deity. In Hinduism the Deva are called suri*) These are the inhabitants of the planet Deva (*in this text we will call the plant of the Galactic Plant Deva in order to distinguish it from the other planets*). The planet Deva is a part of its own Solar system, which is on the second level of the Universe as we are [4].

This Solar system, part of which is the planet Deva, along with the Milky Way, which is also on the second level of the Universe, are the flower of another much larger Galactic Plant, which is on the first, most external level of the Universe. This Galactic Plant is a Water Lily [5]. The Water Lily is so big that it is in fact the solid ground on this level. Around it there is only water. The inhabitants of the first level, which is the most external, live on the Water Lily and are called gods (*classical mythology*). Here on the first level the Sun circles around the Water Lily.

If one imagines that he is on the planet Deva, on the second level of the Universe and looks upon our Galactic Plant, one of the many flowers of that Plant is our galaxy – the Milky Way, and in it is our own Solar system.

Whatever satellites we send into outer space, at least till now they are not able to go further than our own Solar system. So if people leave the Milky Way galaxy, which is on the second level of the Universe, this

will mean that they would leave our flower of the Galactic Plant and what would they see from there? The planet Deva most likely resembles our planet Earth. Beyond the horizon, seen from that flower, one can see part of the so called dark matter. The planet Deva has its own magnetic field. It has its Sun, Moon, which have an effect on the Galactic Plant. The whole energy, which we can't see or measure directly, is called dark energy.

And we must add the matter and energy, which exists on the first level of the Universe and also the energy and matter from the total model of the Universe, which is determined by the General theory of Unity.

Now on the planet Deva is the vernal equinox, the moment in which the plants bloom. Like on Earth, so on the planet Deva the temperature is and will continue to increase.

From the point of view of the events, described in the different mythologies, this is the moment of the beginning of night and the Beginning of the cycle or circulations. They illustrate the continuous cycle of day and night. This cycle has an effect on every single plant. This same cycle applies to the Galactic Plants.

Any plant on different levels of the Universe has certain cycle of development. From our time's point of view the duration of a single cycle on Earth is one year. It starts on the 20th /21st of March each year.

The beginning of the cycle of the planet Deva, or the Beginning of the second level of the Universe, starts on 21st of December, 2012 [6]. The duration of this cycle here on Earth is 36 000 years.

On the first level of the Universe or regarding the Water Lily, the Beginning according to the Hindu calendar was 17th/18th of February 3102 years BC (*from the Julian calendar*), and according to the Maya the beginning, or as they called it the Great cycle, had started on the 11th of August 3114 years BC [7]. A single cycle on the first level of the Universe is called Mahayuga, the day (*it consists of four days*) is with the duration of 4.32 million years [8].

From a physics point of view the processes which occur during each cycle on the different levels of the Universe are examined in the General theory of Unity, which is based on the Law of Unity. It is Unity because it incorporates the main oppositions in the Universe – the cycles in nature could not exist without them.

The fundamental law forming the General theory of Unity is the Law of Conversion. It gives the connection between the quantity, quality and manifestation in nature.

The mathematical formula of the Law gives a chance for the conversion of unlimited number of elements from a system to another, so that: the outer manifestation of this system can stay unchanged after the conversion from one configuration to another, regardless of the changes in quantity and quality.

The Law of Conversion can be easily understood if we take two resistances (r and x) and we connect them in two different ways – successively (linear or two primary) (fig. 1) or in parallel (circular or one primary) (fig. 2) [9].

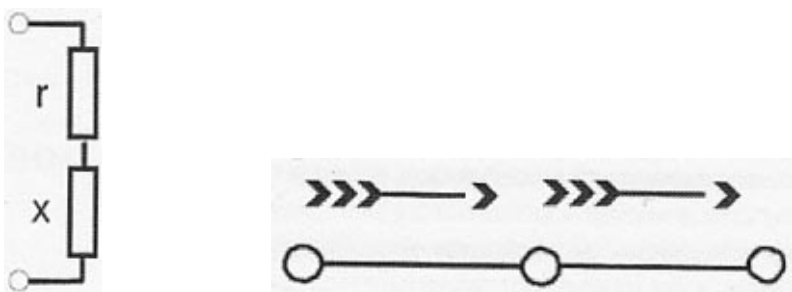


Fig. 1



Fig. 2

As we saw, regardless of the development, linear or circular, they are in fact unity – and line or a circle.

The circulations in nature consist of the unity between the two kinds of conformations, which form in the certain way the whole circulation (see below).

With admirable skills the Law of Conversion expressed in a circulation, is shown in a drawing from Heliopolis [10] (fig. 3). In the upper part the process is seen from one point of view, in the lower part – from another, and it is clearly understood, that the process is connected with the reproduction in nature. It is certain that each detail from the illustrations has a meaning.



The Gods Nut, Geb and Shu

Nut symbolizes – sky, woman and night; Geb – earth, man, day; Shu – air, cycle, conversion. Together they show the development in the cycle of oppositions in nature.

Fig. 3

The Gods with their positions symbolize the path of development in a single cycle or circulation. This cycle is the same in all the levels of

the Universe. The Beginning of the cycle is where the hands of Geb and Nut come together.

The sky goddess Nut is with a curved body and shows the circular development. Here figure is large – in the circular development the elements are relatively big. Her two parallel arms and two parallel legs illustrate simultaneously the development of two opposite “branches” of development.

The position of the earth god Geb expresses the changes, which occur during the lineal development. Here the events happen successively in three stages, illustrated by the arms, body and legs. Geb’s figure is small – in the lineal development the elements are relatively small.

The cycle starts with Nut’s hands and continues to the beginning of her body, a part which is pointed by the right had of Shu – the air god. That which has happened from the beginning of the cycle till this moment is conversion in Nut’s body – a mixed configuration (lineal and circular at the same time). At the end of Nut’s body, where one can see Shu’s left hand, there is a new conversion. The body of Nut is converted into the legs of Nut or the mixed configuration is converted to circular. Her end “half” of the circulation, the end of night and the beginning of day, Nut’s end and Geb’s beginning. The body of Geb is the conversion so far development, expressed with the body and position of Nut. The point of conversion is at the end of Nut’s legs and the beginning of Geb’s legs. In the start of the development of Geb there is powerful, explosive development of matter. This point is widely known as the Big Bang theory.

Without going into too much detail, on fig. 4 god Vishnu [11], keeper of live, expresses the different stages in a cycle development in the continues conversion (shape shifting) of his appearance.



*God Vishnu – keeper of life
Illustrates the circulation of life, in his reincarnations during day and night,
symbols of which are the Sun and Moon*

Fig. 4

The process of conversion in nature can be seen in the temple of Luxor of Seti III [12].

The temple of Luxor on its own is an encoded knowledge. Not a single doorstep in the ancient Egypt temple can be crossed unconsciously.

Fig. 5, taken from the papyrus of Ani, shows the first of the ten doors of the ten pylons, which Ani had to pass. The door is animated; it is in fact a goddess, guardian of the door – “The mistress of horror” which keeps away “the forces of chaos”.

(The papyrus of Ani is a papyrus with hieroglyphics and colorful illustrations, crated about 1205 BC in the 19th dynasty of the New kingdom of Ancient Egypt. The papyrus of Ani is the manuscript crated by Tiva, the clerk of Ani).



The animated door on the pylon; the doorman with the head of a snake, and has a broom in his hand. The papyrus of Ani

Fig. 5

The door on the second pylon is an equally difficult challenge. Here the traveler faces “The Lord of the world, who destroys with fire, Mistress of the mortals, greater then all men”. The guardian of the door is called “He who shapes the end”. On this spot the traveler is subdued to a most horrible challenge – he is absorbed by flame. In many of the following doors fire, burns or teams regarding important parts of “The Book of doors”, crated in the age of the New Kingdono, are mentioned.

Through such fire filled “warm” doors periodically the Universe passes and will continue to pass on its circulations, as is told by the ancient scholars. Today’s scientists-climatologists talk about Global warming. It is believed that emissions in the atmosphere from human activity just increase this process, but on their own they are not the cause of Global warming. It is predetermined. The Galactic warming on the first, second and third level of the Universe is also predetermined. On the first and second level now “night” begins.

That is why, rather than building higher skyscrapers and larger cities, people should consider why there were ancient underground cities like in Cappadocia (Turkey) [13] and other places on Earth. Modern architects, engineers, scientists from different fields should focus their efforts in this direction. Scientific researches and the development of new technologies aimed to save humanity by transportation to another planet or life supporting space station would not be cheaper or favorable than the construction of towns underground in places fit to sustain the needs of humans. Such projects should be encouraged and financed.

References

1. Hristov P., FATE OF THE WORLD 21.12.2012 the ancient knowledge of the cycles of time, 77-115, 131-136, Five Plus, 2012.
<http://www.amazon.com/WORLD-21-12-2012-ancient-knowledge-cycles-ebook/dp/B008833DKA>
2. review of the Sagittarius Dwarf galaxy:
<http://viewzone2.com/milkywayx.html>
3. Srimad Bhagavatam, Canto 2, The Cosmic Manifestation, <http://www.srimadbhagavatam.org/contents.html>
4. View 3 again (above)
5. review of water lily
http://en.wikipedia.org/wiki/Nymphaea_caerulea
http://en.wikipedia.org/wiki/Maya_jaguar_gods
<http://real-gaia.angelfire.com/lotus.html>
6. Hristov P., FATE OF THE WORLD 21.12.2012 the ancient knowledge of the cycles of time, 24, 29-31, Five Plus, 2012.
<http://www.amazon.com/WORLD-21-12-2012-ancient-knowledge-cycles-ebook/dp/B008833DKA>
7. review of the Long Count calendar
<http://www.ibtimes.com/doomsday-dashed-why-end-world-will-not-happen-dec-21-2012-420722>
<http://therealmayanprophecies.com/why-the-maya-calendar-starts-in-3114-bc/>
8. review of Hindu units of time
http://en.wikipedia.org/wiki/Hindu_units_of_measurement
<http://veda.wikidot.com/vedic-time-system>
<http://www.mcremo.com/vedic.htm>
9. Hristov P., The Law of Unity, Five Plus, 33-40, 2001.
<http://www.amazon.com/The-Law-Unity-Petio-Hristov-ebook/dp/B007Q0CKGY>

10. review of Heliopolis

<https://sites.google.com/site/collesseum/heliopolis>

11. review of Lord Vishnu

<http://theindianhistory.blogspot.com/2013/04/about-lord-vishnu.html>

<http://www.indianhindubaby.com/108-holy-names-of-lord-vishnu-ashtottara-shatanaamavali/>

<http://en.wikipedia.org/wiki/Vishnu>

12. Naydler J., Temple of the cosmos: the ancient Egyptian experience of the sacred, Shambala books, 383-393, 1998.

13. review of Cappadocia

<http://en.wikipedia.org/wiki/Cappadocia>

<http://www.todayifoundout.com/index.php/2013/09/intriguing-ancient-underground-city-derinkuyu/>

<https://sites.google.com/site/naomiastral/ancient-civilisations/underground-cities-in-cappadocia---turkey>