

## 1. Introduction - The Nature of Everything (NOE) Hypothesis

The NOE Hypothesis concepts are extracted from the combined work of Blavatsky, Bailey and Besant.<sup>i</sup> The original paper, "[A New Cosmological Model for Matter, Energy, Sound, the Origin of the Universe and Gravity](#)" (Holloway, Model, 2010) is intended as a bridging paper between esoteric philosophy fact and scientific hypothesis. The concepts have been translated into the language of physics and chemistry from the often abstruse language found in philosophy.<sup>ii</sup>

## 2. Postulates – All Must be Interpreted in Terms of Consciousness

The original paper avoided discussions on consciousness and life but moving forward it will not be possible for scientists to gain any significant advances until addressed. The following abridged postulates are the assumptions that science have excluded from their theories (Bailey, A Treatise on Cosmic Fire, 1973, p. 4):

### 2.1. The Boundless Immutable Principle

1. There is one Boundless Immutable Principle; one Absolute Reality which antecedes all manifested conditioned Being. It is beyond the range and reach of any human thought or expression.
2. The manifested Universe is contained within this Absolute Reality and is a conditioned symbol of it.
3. From basic creative principles, in successive gradations there issue in ordered sequence the numberless Universes comprising countless Manifesting Stars and Solar Systems.
4. Each Solar System is the manifestation of the energy and life of a great Cosmic Existence, Whom we call, for lack of a better term, a Solar Logos.
5. This Solar Logos incarnates, or comes into manifestation, through the medium of a solar system.
6. This solar system is the body, or form, of this cosmic Life, and is itself triple – positive, neutral and negative.
7. These three aspects of the Whole are present in every form.
8. The three aspects of every form are inter-related and susceptible of intercourse, because energy is in motion and circulates; and all forms in the solar system form part of the Whole, and are not isolated units.

### 2.2. The Law of Periodicity.

9. This law governs all manifestation, whether it is the manifestation of a solar Logos through the medium of a solar system, or the manifestation of a human being through the medium of a form. This law controls likewise in all the kingdoms of nature.
10. There are certain other laws in the systems which are linked with this one. Some are noted in the table below:

Cosmic Laws	
<b>1.The Law of Synthesis - Positive</b>	
<b>Subsidiary Laws</b> <b>The Law of Attraction - Neutral</b> <b>The Law of Economy – Negative</b>	Basic law of the positive pole, the nucleus. Tendency to concentrate, hold together, merge.  <b>The Law of Synthesis is minimally understood as the strong nuclear force (SNF). It is much more.</b>
<b>2. The Law of Attraction - Neutral</b>	
<b>Subsidiary Laws</b> <b>1. Law of Chemical Affinity</b> <b>2. Law of Magnetism</b> <b>3. The Law of Magnetic Control.</b> <b>4. Law of Radiation</b> <b>5. Law of Colour</b> <b>6. Law of Gravitation</b>	Conditions the aspect of neutral electrical phenomenon. The hydrogen bond is an example of neutral electricity.  (The Law of Magnetic control is one of the most important of the systemic laws - it is the law of coalescence which allows for all atoms to coalesce from the root including the universe, galaxies, Suns, and planets.)

<p>7. Law of Planetary Affinity 8. Law of Solar Union 9. Law of Cohesion 10. More.....</p>	<p>Einstein's Theory of General Relativity is part of The Law of Attraction.</p>
<p>3.The Law of Economy - Negative</p>	
<p><b>Subsidiary laws</b> 1. The Law of Vibration 2. The Law of Adaption 3. The Law of Repulsion 4. The Law of Friction 5. The Law of Disintegration 6. More.....</p>	<p>It is the law governing the scattering of the atoms of matter and their dissociation from one another, wide distribution, vibratory rhythm, heterogeneity and quality and their inherent rotary action.</p> <p><b>The Law of Economy is partly developed by Quantum Mechanics (QM).</b></p>

11. Each law sweeps periodically into power and each plane has its period of manifestation and its period of obscuration.
12. Knowledge of the cycles involves knowledge of number, sound and colour.

### 2.3. All Souls are Identical with the Oversoul

The Logos of the solar system is the Macrocosm. Man is the Microcosm.

13. Soul is an aspect of every form of life from a Logos to an atom.
14. The Law of Correspondences will explain the details of this relationship. This Law of Correspondences or of Analogy is the interpretive law of the system.

## 3. The Atom and the Spirilla Hypothesis

Understanding the atom and its triple nature (positive, neutral and negative) is paramount to unifying General Relativity, as part of the Law of Attraction, Quantum Mechanics and Consciousness. String Theory is superseded with the Spirilla Hypothesis. The following are the postulates:

- a. An atom consists of a spheroidal form containing within itself a nucleus of life and has 7 planes of being.
- b. An atom contains within itself differentiated molecules, which in their totality form the atom itself. For instance, we are told that the physical atom contains within its periphery fourteen thousand millions ( $1.4 \times 10^{10}$ ) of the archetypal atoms, yet these myriads demonstrate as one.
- c. An atom is distinguished by activity, and shows forth the qualities of:
  1. Rotary motion.
  2. Discriminative power.
  3. Ability to develop.
  4. An atom contains within itself three major spirals and seven lesser<sup>1</sup>.
  5. An atom is governed by the Law of Economy, is coming slowly under the Law of Attraction, and will eventually come under the Law of Synthesis.
  6. An atom finds its place within all forms; it is the aggregation of atoms that produces form.
  7. Its responsiveness to outer stimulation; electrical stimulation, affecting its objective form; magnetic stimulation, acting upon its subjective life; the united effect of the two stimulations, producing consequent internal growth and development.

<sup>1</sup> Treatise on Cosmic Fire, p. 246, and p. 1181, Inner Life; Vol. II, 177-179, Occult Chemistry, p. 22. Occult Chemistry, Appendix II and III. Babbitt's "Light and Colour," pp. 97-101

By the Law of Correspondence or Analogy the above definition holds for all atoms from hydrogen, to solar systems to universe-atoms. The analogy must not be carried to details for example the solar Logos is governed by the Law of Synthesis. He holds all in synthetic unity or homogeneity. His subjective life is governed by the Law of Attraction; His material form is governed by the Law of Economy (Quantum Mechanics).

Figure 1 The Hydrogen Atom<sup>2</sup>

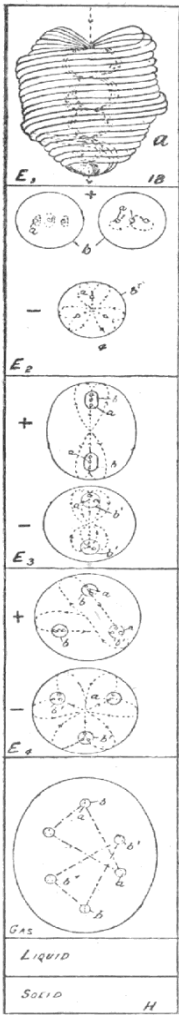


Figure 1 shows the formation of the hydrogen atom from the 1<sup>st</sup> sub plane (of the 7<sup>th</sup> sub plane of the 7<sup>th</sup> plane.<sup>iii</sup>) to the gaseous phase counting down according to Besant. Her Ultimate Physical Atom (sub quark<sup>iv</sup>) (top drawing) cannot be divided further. The sub quark consists of 10 spirillae with each spirilla turning producing (archetypal atoms) bubbles similar to those found in sonoluminescence. The interior of the bubble is a vacuum with low density plane substance analogous to plasma<sup>3</sup>. The central core is experiencing a Birkeland-like current. Recurrence relation is demonstrated in Figure 2 and Figure 3 All flowing forces come from the 5<sup>th</sup> dimension; initial vibratory impulse comes from the 7<sup>th</sup>. E1 to E4 is where dark matter is found<sup>v</sup>. Further from Besant; "of the chemical atom, the force "clears itself a space, pressing back the undifferentiated matter of the plane, and making to itself a whirling wall of this matter." The wall belongs to space, not to the atom." (Bubble in a kailon.) The spirillae<sup>vi</sup> are organized under the Law of Synthesis (SNF), come under the Law of Attraction and sheathed by matter behaving by the Law of Economy (QM).

On the Gas plane contained within an egg-like form, the interlacing triangles represent the two nucleons – the second triad is the image (Ethereic double) and sits in the 4<sup>th</sup> dimension<sup>vii</sup>. The circles at the 6 vertices represent the constituent triads, or quarks of flavor *c* (*charm*)<sup>viii</sup> and ( $\bar{c}$ ) (*anticharm*). Inside each quark are the 3 'Ultimate Physical Atoms' or sub-quarks for a total of 18 sub-quarks.<sup>ix</sup>

Figure 2 "FIGURE 15.3.2. Simple model of a filamentary current structure in a low-density plasma. Currents flow parallel to the magnetic field. The lines in the figure represent both current paths and magnetic field lines. The magnetic field derives partly from an external axial field and partly from the toroidal field produced by the current itself (see Alfvén and Fälthammar, 1963). The current is strongest at the axis and becomes weaker further away from the axis as depicted by the decreasing thickness of the lines." (NASA)

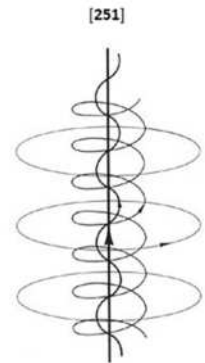
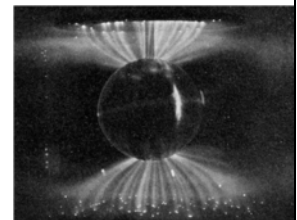


Figure 3 Aurora-like Birkeland currents created by scientist Kristian Birkeland in his terrella, featuring a magnetised anode globe in an evacuated chamber. (Wikipedia, Birkeland current, 2010)



Besant outlined various alignments of the sub quarks some of which are shown in Figure 4.

Sub quarks are permanent atoms. Permanent atoms are the point of contact for energy and force and are tiny vortices. They differ from atomic atoms in many aspects foremost being that they come under the Law of Attraction, while atomic atoms comes under the Law of Economy which is modeled by Quantum Mechanics. Permanent atoms vary on each plane and by the number of spirillae. The form that is built upon them depends

<sup>2</sup> Besant, A., & Leadbeater, W. (n.d.). *Occult Chemistry*. Retrieved 07 02, 2012, from Project Gutenberg: <http://www.gutenberg.org/ebooks/16058>. Page 11 (<http://www.gutenberg.org/files/16058/16058-h/16058-h.htm#chap1>)

<sup>3</sup> Please see Suslick, K. S., & Flannigan, D. J. (2009, October). *Plasma conditions during single bubble sonoluminescence*. Retrieved August 26, 2010, from J. Acoust. Soc. Am.

upon the type of force which animates, upon the interplay of that force in substance, upon the dual, triple, or united aspect of force, and upon its septenary demonstration in form-building. Relative to a human, there are permanent atoms where all consciousness, all memory, all faculty is stored<sup>x</sup>.

**Figure 4 Besant's Hyper-Meta-Proto-Elemental Open and Closed Subquark Alignments**



Sub quarks are noted as the heart shaped icon. The alignments are determined by the musical fugue coming from the 5<sup>th</sup> dimension. String theory has open and closed formations however; strings and spirillae are not the same. The spirillae are streams of force which circulates geometrically within the circumscribing wall of substance as shown. Spirillae are 4 dimensional; strings are 1 dimensional in the theory. The Spirilla Hypothesis resolves the mass paradox.

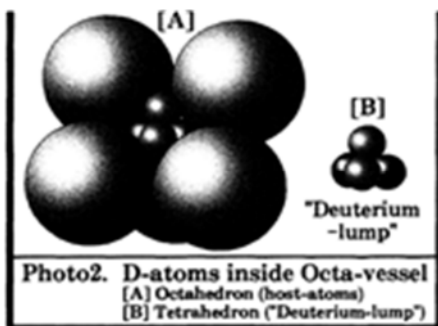
### 3.1. Cosmic Sonoluminescence – The Coalescence of the Universe-Atom and the Hydrogen Connection

The NOE Hypothesis summarizes the life cycle of the universe from the perspective of matter as follows<sup>xi</sup>:

1. The root of matter was present with no form, light or energy. It is under extreme pressure and is at absolute zero. There is no substance like it on earth but the inner core of a Black Hole has relatively pristine, undifferentiated root matter.
2. The Cosmic Logos uttered the mantric words of creation in the 5<sup>th</sup> dimension. A chemical reaction with the root occurs. Under the Law of Synthesis he pulled together the analogous, cosmic spirillae of energy and force and synthesized them into the equivalent of a sub quark as shown in Figure 1 (top sketch). The four lower spirillae when manifesting on the physical plane will come under the Law of Economy, Quantum Mechanics, the 5<sup>th</sup> and 6<sup>th</sup> spirillae, from the perspective of the physical plane, will come under the Law of Attraction. However, the 5<sup>th</sup> spirilla synthesizes the lower four and is the 3<sup>rd</sup> of three major spirillae - Quantum Mechanics. The lesser spirillae are direct reflections.<sup>xii</sup> The 2<sup>nd</sup> major spirilla comes under the Law of Attraction. The 1<sup>st</sup> major spiral synthesizes them all – Strong Nuclear Force.

Simultaneously, as the frequency of the sound wave increased passing through microwave and infrared birth appeared when the wavelength reached that of light. The planes developed and light appeared on all planes within the cosmic bubble (referred to as a bubble in a koilon). The Cosmic Logos' analogous, permanent atom for each plane developed. The arrangement of the spirillae within the permanent atoms varies on each plane. For example the buddhic (5<sup>th</sup> plane counting up, 4<sup>th</sup> plane counting down) permanent atom has its spirillae arranged so as to form approximately a figure eight with a central stream bisecting the double spiral. (Figure 1, E3).

3. As the frequency of the sound (words) increased it reached the hypergammic stage and the Cosmic Logos developed his physical permanent atom which resembles an egg-like form<sup>xiii</sup> with two nucleons as shown in Figure 1, Gas sketch. The energy centers appear (e.g. Betelgeuse) and form develops as the image in the lower sub planes. The interior of the cosmic bubble is the vacuum of space with the central core experiencing a Birkeland-like current. From the perspective of the physical plane, it bonds with surrounding universe-atoms<sup>xiv</sup> in a structure similar to a metallic deuterium/hydrogen lattice where our universe is a hydrogen atom in infinity. Recurrence relation is demonstrated in Figure 5 (Arata & Zhang, 2002).

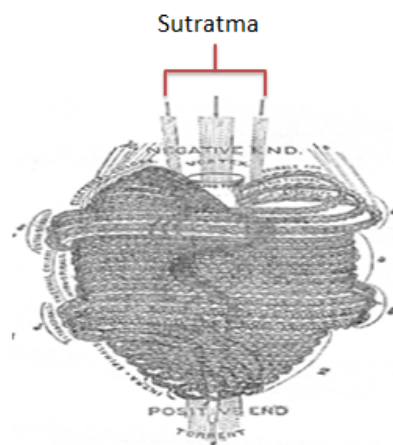


**Figure 5 Model of Octahedral Structure** – “in the unit cell of the host lattice and the "deuterium lump" (deuterium/hydrogen) with ultrahigh density which is located with the shape of the tetrahedral structure inside the Octahedron of the host lattice. Here, this model is constructed using the ratio between actual Pd and deuterium in the diameter.”

As the periphery of our universe-atom came within the periphery of the surrounding deuterium universe-atoms, radiation was set up, a point of depression made its appearance, marking the inflow and outflow of force or heat which continues.<sup>xv</sup>

Under the Law of Magnetic Control, hydrogen coalesces. It is the ‘first born’<sup>xvi</sup> and contains within its structure the reflection of the Cosmic Logos. Under the Law of Correspondence or Analogy to understand the 4 dimensional, 7 plane, dinucleon nature of hydrogen, and hydrogen bonding, is to understand our material universe<sup>xvii</sup> and how it is held together with<sup>xviii</sup> neutral electricity.<sup>4</sup>

The Periodic Table of the Elements<sup>xix</sup> replicates other formations for universe-atoms. In a statement from Besant "It is most curious that hydrogen, oxygen and nitrogen, the most widely spread gases, all differ fundamentally in form from the groups they reputedly head." As with hydrogen, oxygen<sup>xx</sup> and nitrogen differ due to their unique positions in the DNA strand; Nuclear Overhauser Effect and J coupling are involved which on the cosmic scale is referred to as The Law of Solar Union since all Suns align as shown Figure 4. Our Sun is in union with Sirius. The Sun is analogous to a sub quark with the inner core composed of 4<sup>th</sup> dimensional substance/fluid (akasha<sup>xxi</sup>) animated by latent heat which is channeled through the sutratma<sup>xxii</sup>, surrounded by positive electrical fluid and coronal plasma as shown in the figure to the right.<sup>xxiii</sup>



4. Electrical energy in its 3 forms is functioning perfectly. The young universe is held together through the spheroidal form controlled by the synthesizing electrical energy of the second aspect – i.e. neutral electricity.
5. Hydrogen converted to helium and the chemistry of space continued as more atoms coalesced out of the root. The cosmic fugue becomes more complex, more black holes develop, differentiation begins and the volume increases. Expansion follows. Coalescence comes under the Law of Magnetic Control which is shown below<sup>xxiv</sup>.

(Holloway, Model, 2010) Figure 6 shows the solidification of planet Earth from the 4th Cosmic Etheric plane as it coalesces to the physical plane. Planes 4, 5, 6 and 7 are the material planes where matter is the coarsest and hence detected. Ether and matter are synonymous terms but graduated according to solidification. Ether is undifferentiated root; matter is differentiated by electricity (fohat) carried by sound in the 5th dimension. Also shown are the ascending arc and the transition of the planet as it returns to the higher planes. This phenomenon accounts for the missing mass and the increased radiation of Earth since it has started the transition upwards.

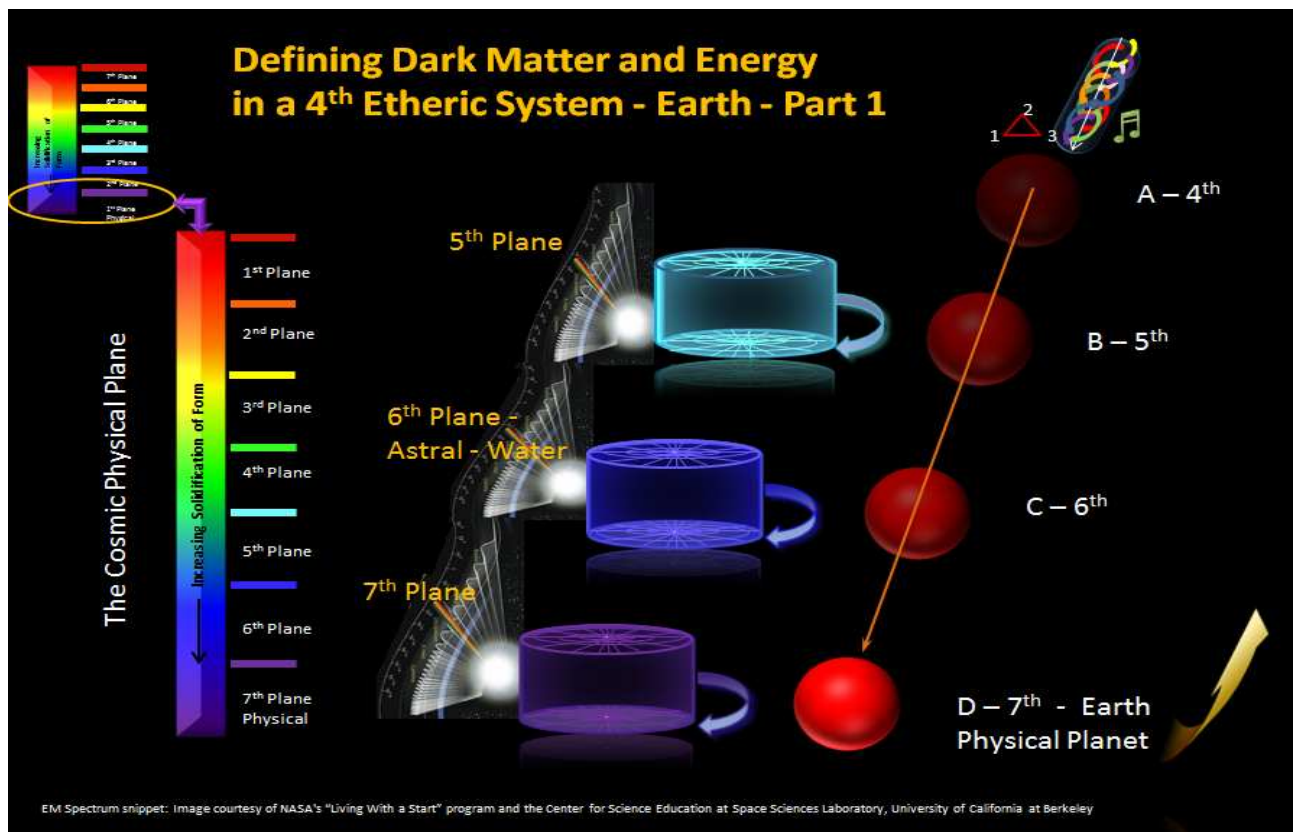
Partial interpretation of the figure relative to this essay follows:

- The triangle represents the 3 forms of electricity; 1 is positive, 2 is neutral, and 3 is negative. The note symbol represents sound in the 5<sup>th</sup> dimension. The multi colour cylindrical symbol represents matter coming from the root through a Black Hole with the Cosmic Spirillae shown in various colours. These spirillae are analogous to those in the sub quark.

<sup>4</sup>Please review IUPAC. Compendium of Chemical Terminology, 2nd ed. (the "Gold Book"). Compiled by A. D. McNaught and A. Wilkinson. Blackwell Scientific Publications, Oxford (1997). XML on-line corrected version: <http://goldbook.iupac.org> (2006-) created by M. Nic, J. Jirat, B. Kosata; updates compiled by A. Jenkins. ISBN 0-9678550-9-8. [doi:10.1351/goldbook](https://doi.org/10.1351/goldbook).

- The light wave represents 6<sup>th</sup> dimensional light as it is refracted into the Rays channeled through the sutratma. The brilliant white spot shown on each plane next to the light wave represents the point of energy coming from the 5<sup>th</sup> to the 4<sup>th</sup> dimension. The turning cylinders represent colour in the 4<sup>th</sup> dimension and the rotation of the planes. The reflection of the planes represents the image to the lower sub planes.
- The red globe is a Halbach Sphere. Deep in the heart or central core of a planet are caverns filled with crystals which are determined by the 1<sup>st</sup> spirilla, and incandescent burning<sup>xxv</sup>. An electrical fluid (2<sup>nd</sup> spirilla) is latent in the planet and is partly recognized as the aurora and lightening – it is the opposite pole to the solar electrical fluid. Planetary Prana<sup>xxvi</sup> comes from the 3<sup>rd</sup> spirilla. The same process applies for Suns, planets, atoms and the tiny life form referred to as an electron.

Mathematical development of this law must also include the type of energy/Ray (not discussed in this paper).



**Figure 6** Defining Dark Matter and Energy in a 4<sup>th</sup> Etheric System – Earth - Part 1 (EM Spectrum snippet: Image courtesy of NASA's "Living With a Star" program ([http://ds9.ssl.berkeley.edu/LWS\\_GEMS/index.htm](http://ds9.ssl.berkeley.edu/LWS_GEMS/index.htm)) and the Center for Science Education at Space Sciences Laboratory, University of California at Berkeley).<sup>xxvii</sup> <sup>xxviii</sup>

6. Following principles of recurrence relations and using the cosmic genetic code stored in the root, planets, suns, stars and galaxies develop and proceed through the lifecycle in three basic stages: inertia, mobility and rhythm. The universe in its totality is influenced by other universe-atoms as discussed above and will rotate<sup>xxix</sup>. All forms are composed on 7 planes through sound and all represent consciousness of some living entity. What we call the heavens are the visible permanent atoms of a conscious entity on the lowest plane. The corollary - where there is light there is life.
7. The end of the cycle is witnessed by a 'big bang' and cremation follows. Time ceases in the cycle, matter is reabsorbed back to the root and quiescence sets in. The expected life span is approximately  $3 \times 10^{14}$  years.<sup>xxx</sup>

## 4. General Relativity & Quantum Mechanics and Consciousness

How do the definitions of Time and Space change when adding life and consciousness?

### 4.1. Current Space and Time Definitions

“Space is defined as the boundless, three-dimensional extent in which objects and events occur and have relative position and direction. Physical space is often conceived in three linear dimensions, although modern physicists usually consider it, with time, to be part of a boundless four-dimensional continuum known as spacetime. The concept of space is considered to be of fundamental importance to an understanding of the physical universe.” (Wikipedia, Space, 2012).

The definition of time has contrasting view points from the perspective of physicists: one view is that time is part of the fundamental structure of the universe, a dimension in which events occur in sequence. The opposing view is that *time* does not refer to any kind of "container" that events and objects "move through", nor to any entity that "flows", but that it is instead part of a fundamental intellectual structure (together with space and number) within which humans sequence and compare events.

### 4.2. Cycles and Repetition within the NOE Hypothesis<sup>xxxi</sup>

#### 4.2.1. The Idea of Repetition.

Repetition involves the following factors:

- a. **Repetition in time:** The thought of cyclic activity necessitates periods of time of differing length—greater or lesser cycles—but (according to their length) of uniform degree. Further, the cycles wherein an atom of any plane revolves upon its axis are uniform on its own plane.
- b. **Repetition in fact:** This involves the idea of a key measure, or sound of any particular group of atoms that go to the composition of any particular form. This grouping of atoms will tend to the make-up of a particular series of circumstances and will repeat the measure or sound when an animating factor is brought to bear upon them.
- c. **Repetition in space:** This concept is involved deep in the greater concept of karma ([Quantum Entanglement](#)), which is really the law that governs the matter of the solar system, and which commenced in earlier solar systems.

The thoughts thus conveyed might be expressed likewise as follows:

Repetition	Example
Space	The solar system repeating its activity.
Time	A planetary chain repeating its activity.
Plane	The constant consecutive reverberation of a plane note, of a subplane note, and of all that is called into objectivity by that note.
Form	The tendency of atoms (atoms, man, solar logos, universe-atoms) to perpetuate their activity, and thus produce similarity of circumstance, of environment and of vehicle.

#### 4.2.2. Repetition of Cyclic Action

The note of the Sun holds in just attraction the circling spheres, the planets. The notes synchronise and harmonise. Cyclic evolution proceeds. But—during the great cycle of evolution—the cyclic display of the interaction between Spirit and form is seen, and the result is the ordered cycles of the planets, of a human being, and of an atom.

#### 4.2.3. Cycles

**1. Rotation on the axis:** This is to be seen whether we are dealing with a minute atom of substance, with a planet revolving on its axis, or with the rotation of a solar system. In relation to a solar Logos it might be considered as one complete revolution of the Sun in space, with all that is included within the ring-pass-not.

**2. Rotation around an orbit.** This is the revolution of a sphere of life, not only on its axis, but along a spheroidal path or orbit around a central point. In connection with the solar Logos it is the complete revolution of the solar system around its cosmic centre.

It is to be noted at this point that the ideas dealt with in connection with cyclic evolution cannot be posited apart from the concept of consciousness. The ideas of time, of space, and of activity, can only be conceived as relative to some conscious entity, to some Thinker.

#### 4.2.4. Time

Time is that cycle, greater or lesser, in which some life runs some specific course, in which some particular period begins, continues, and ends, in connection with the awareness of some Entity, and is recognized only as time when the participating life has reached a considerable stage of awareness. Time has been defined as a succession of states of consciousness, and it therefore may be studied from the point of view of:

Consciousness	Description
Logocic	The successive states of divine realization within the solar sphere.
Planetary	A Heavenly Man as He cycles successively through the scheme. <sup>xxxii</sup>
Causal	Successive expanding of the intelligent awareness of a human being from life to life.
Human	The awareness of a man on the physical plane, and progressively on the emotional and the mental planes.
Animal, vegetable and mineral	Consciousness which differs from the human consciousness in many particulars, and primarily in that it does not co-ordinate, or deduce and recognise separate identity. It resembles human consciousness in that it covers the response to successive contacts of the units involved during their small cycles. However, advanced animals on the cusp of individualization are approaching human consciousness in all particulars. <sup>xxxiii</sup>
Atomic	Demonstrates through successive states of repulsion and attraction.

We might, therefore, consider time as that process of activity, or that progression in development, wherein the indwelling Consciousness is seeking its opposite (Quantum Entanglement). The duration of the interplay, the period of the search of Spirit for Spirit, and the vibratory process necessitated by the utilisation of the form, this we call Time, whether in connection with a man, a planetary Logos, or the Deity.

#### 4.2.5. Space

**Space**, again, is included in the idea of consciousness, and its utilisation of matter. Space, for the Logos, is literally the form wherein His conscious activities and purposes are worked out—the solar ring-pass-not. The space wherein a planetary Logos works out His plans is similarly as much of solar space as His consciousness is developed enough to use.

Space for the atom will be the radius of the form in which is found the greater centre of consciousness of which it is a part and it will be both attracted and repulsed—attracted and built into the form of the greater Life, yet repulsed and thereby prevented from moving from a certain point within that form.

### 4.3. Conclusion

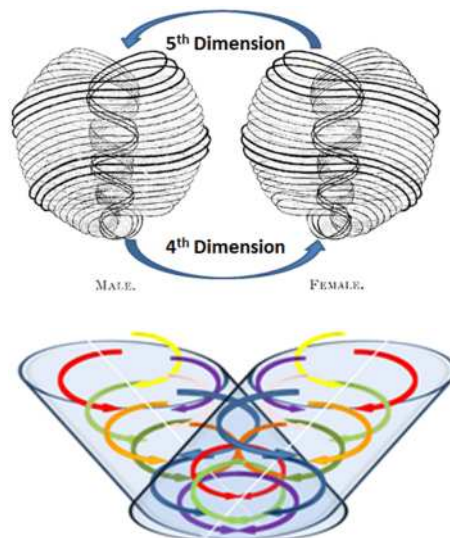
Therefore we have that which we call Time and Space, and this holds equally true in the life cycle of a Logos or an ant, or a crystal. There are cycles of activity in matter, due to some energising Will, and then Time and Space are known. There are cycles of non-being when Time and Space are not, and the energising Will is withdrawn. But we must not forget that this is purely relative, and only to be considered from the standpoint of the particular life or entity involved, and the special stage of awareness reached. All must be interpreted in terms of consciousness. Simply stated, time and space are not the same for all states of consciousness, planes or dimensions.<sup>xxxiv</sup> In terms of Noether's theorem identity is preserved in cohesion.<sup>xxxv</sup>



## 5. Quantum Entanglement and the Spirilla Hypothesis

The subquarks come in two versions with opposite force flows – from the 5<sup>th</sup> to the 4<sup>th</sup> dimension as male or positive; from the 4<sup>th</sup> to the 5<sup>th</sup> dimension as female or negative. Figure 7 shows a binary closed loop entanglement where the arrows indicate the direction of the force flow in a horizontal plane; vertical entanglements between planes and entanglements over dimensions and planes also occurs however permanent atoms are only associated with the 7 planes of the Cosmic physical plane. There is a correspondence in the higher planes. The pair vibrates in unison and a rhythm occurs which is determined by the predominately entangled spirillae. Distance is a function of three dimensions only (not the 4<sup>th</sup> and 5<sup>th</sup>) therefore the distance between the pair can appear to be great. Science currently recognizes the binary pair however Figure 4 indicates other entanglements. The neutral entanglement is stable; positive or negative entanglements are seeking the opposite. Quantum entanglement of a human being also works through the permanent atoms, not the material sheath i.e. physical body, is calculated over time, space and dimension, and is known as Karma. Quantum Entanglement comes under the Law of Attraction.

Figure 7 Binary Closed Loop Quantum Entanglement



## 6. New Energy Source

To replicate the Sun's power it is necessary to replicate the root and allow for the birth of the Sun's power source (akasha, 4<sup>th</sup> dimensional fluid; heat and magnetism) through the sutratma, bringing **positive solar electricity** (which needs to be channeled) and coronal plasma (light). See "Fluidized Catalytic Fohat, Searching for a New Form of Clean Energy through the Agency of Adapted Sonoluminescence" (Holloway, Technical, 2010).

## 7. Conclusion

**Cause and Effect** – in unifying General Relativity, Quantum Mechanics and Consciousness the current impasse is a result of studying only the effects of unknown causes. This paper outlines the causes as described by Blavatsky, Bailey, and Besant which in reality is a single piece of work.

Moving forward it will not be possible for scientists to gain any significant advances until life and consciousness are addressed as follows:

1. That the entire solar system embodies the consciousness of an Entity, who originates on planes entirely without the solar ring-pass-not.
2. That the second aspect (Law of Attraction) involves neutral electricity.
3. That manifestation is periodical and that repetition (the Law of Rebirth) is the method that evolution takes in dealing with man, a planetary Logos, and a solar Logos. Hence, the emphasis laid in the Proem of the Secret Doctrine on the three fundamentals,
  - a. The Boundless Immutable Principle
  - b. The periodicity of the Universe, and
  - c. The identity of all souls with the Oversoul.

## Bibliography

- A. Kashlinsky, F. A.-B. (2008). A measurement of large-scale peculiar velocities of clusters of galaxies: results and cosmological implications. *Astrophysics J.* 686, 49-52.
- Arata, Y., & Zhang, Y.-C. (2002). Formation of condensed metallic deuterium lattice and nuclear fusion. *Proc. Japan Acad*, 78(B), 57 - 62.
- Arunan, E., Desiraju, G., Klein, R., Sadleir, J., Scheiner, S., Alkorta, I., et al. (2011, July 8). Defining the hydrogen bond: An account (IUPAC Technical Report). *Pure Applied Chemistry*, 83(8), 1619-1636.
- Bailey, A. A. (1962). *A Treatise on The Seven Rays*. New York: Lucis Publishing Company.
- Bailey, A. A. (1973). *A Treatise on Cosmic Fire*. Albany, New York, U.S.A.: Fort Orange Press.
- Bailey, A. A. (1997). *Letters on Occult Meditation*. New York, N.Y., United States: Lucis Publishing Company.
- Besant, A., & Leadbeater, W. (n.d.). *Occult Chemistry*. Retrieved 07 02, 2012, from Project Gutenberg: <http://www.gutenberg.org/ebooks/16058>
- Blavatsky, H. P. (1897). *The Secret Doctrine Volume 3*. Retrieved 07 02, 2012, from Theosophical: [http://www.theosophical.ca/books/SecretDoctrine,The\\_HPBlavatsky.pdf](http://www.theosophical.ca/books/SecretDoctrine,The_HPBlavatsky.pdf)
- Blavatsky, H. P. (1977). *Secret Doctrine: The Synthesis of Science, Religion, and Philosophy – Volume 1 Cosmogogenesis*. Pasadena, Cali: Theosophical University Press.
- Einstein, A. (1921). *The Meaning of Relativity*. New Jersey: Princeton Univeristy Press.
- Feeney, S. M., Johnson, M. C., Mortlock, D. J., & Peiris, H. V. (2011, 07 13). *First Observational Tests of Eternal Inflation: Analysis Methods and WMAP 7-Year Results*. Retrieved 07 04, 2012, from arxiv: <http://arxiv.org/pdf/1012.3667.pdf>
- Harvard-Smithsonian. (2011, 08 11). *Center for Astrophysics - Alien World is Blacker than Coal*. Retrieved 06 06, 2012, from Harvard News: <http://www.cfa.harvard.edu/news/2011/pr201121.html>
- Holloway, M.-M. (2010). A New Cosmological Model for Matter, Energy, Sound, the Origin of the Universe and Gravity. *SPACE, PROPULSION & ENERGY SCIENCES INTERNATIONAL FORMUM SPESIF-2010* (p. 15). John Hopkins University, Baltimore, Maryland, US: American Institute of Physics.
- Holloway, M.-M. (2010, 12 25). *Technical*. Retrieved 06 06, 2012, from The PG7: <http://www.thepg7.com/technical.html>
- NASA. (n.d.). *SP-345 Evolution of the Solar System, PART C, Plasma and Condensation, 15. PLASMA PHYSICS AND HETEGONY*. Retrieved August 27, 2010, from <http://history.nasa.gov/SP-345/ch15.htm#250>
- Spyrou, A., Kohley, Z., Baumann, T., Bazin, D., Brown, B., Christian, G., et al. (2012). First Observation of Ground State Dineutron Decay:  $^{16}\text{Be}$ . *American Physical Society, Physics, Physics Review Letters*, 108(10), 4.
- Suslick, K. S., & Flannigan, D. J. (2009, October). *Plasma conditions during single bubble sonoluminescence*. Retrieved August 26, 2010, from J. Acoust. Soc. Am.: <http://scitation.aip.org/vsearch/servlet/VerityServlet?KEY=ASADL&smode=strresults&sort=chron&maxdis p=25&origquery=%28sonoluminescence%29+&disporigquery=%28sonoluminescence%29+&threshold=0& pjournal=ARLOFJ%2CJASMAN%2CNOCOAN%2CSOUCAU%2CPMARCW%2CATCODK%2CASA>
- Tateno, S., Hirose, K., Ohishi, Y., & Tatsumi, Y. (n.d.). *Clarification of Material of Earth's Core - Experiments under Ultrahigh-Pressure and -Temperature Conditions Similar to Those in the Inner Core(Press Release)*. Retrieved 07 02, 2012, from SPring-8: [http://www.spring8.or.jp/en/news\\_publications/press\\_release/2010/101015](http://www.spring8.or.jp/en/news_publications/press_release/2010/101015)
- University of Sheffield. (2010, February 15). *Department of Mathematics - Experts discover heavenly solar music*. Retrieved October 27, 2010, from <http://www.sheffield.ac.uk/appliedmaths/research/highlights>
- Wikipedia. (2010, May 5). *Birkeland current*. Retrieved August 27, 2010, from [http://en.wikipedia.org/wiki/Birkeland\\_current](http://en.wikipedia.org/wiki/Birkeland_current)
- Wikipedia. (2012, 06 04). *Space*. Retrieved 06 04, 2012, from Wikipedia: <http://en.wikipedia.org/wiki/Space>

## End Notes

<sup>i</sup> The Secret Doctrine (SD) comes in various editions. The preferred edition is the much maligned third edition which contains thousands of corrections by Annie Besant. Besant was an initiate of the Planetary Hierarchy. This edition is extremely hard to find. ***Engineers and scientists are cautioned on the use of the first edition.*** A Treatise on Cosmic Fire (ToCF) ONLY references the 3<sup>rd</sup> edition. Occult Chemistry is noted as OC below. Online text may be found which for SD (1<sup>st</sup> edition) and OC (2<sup>nd</sup> edition) are accurate (***note a correction is needed to Besant's work – generally all references to dimensions are out by 1***); however, ToCF has a location on lightweaver.com which has had subtle changes made to the text and drawings making it unacceptable for scientific use. The only online source which should be used for ToCF is found at <http://www.lucitrust.org:8081/oobooks/?q=node/288> however it is missing the charts at this time. Charts may be found on the Makara website:

[http://www.makara.us/05ref/03charts/charts\\_toc.htm](http://www.makara.us/05ref/03charts/charts_toc.htm)

<sup>ii</sup> The paper is reproduced at <http://www.thepg7.com/origins.html>, <http://vixra.org/abs/0911.0036> and [http://proceedings.aip.org/resource/2/apcpcs/1208/1/486\\_1?isAuthorized=no](http://proceedings.aip.org/resource/2/apcpcs/1208/1/486_1?isAuthorized=no)

<sup>iii</sup> ToCF page 117; note the placement of the First to Fourth Ether. See Makara; CHART III - THE SEVEN PLANES OF OUR SOLAR SYSTEM. The planes are also noted in CHART V - EVOLUTION OF A SOLAR LOGOS

<sup>iv</sup> Tevatron may have discovered the subquark. [http://www.fnal.gov/pub/today/archive\\_2011/today11-04-07\\_CDFpeakresult.html](http://www.fnal.gov/pub/today/archive_2011/today11-04-07_CDFpeakresult.html)

<sup>v</sup> Ether is another state of substance not recognized by science at this time. A light photon is E2 plane ether.

<sup>vi</sup> Please see OC for the stated types of open and closed subquark alignments (in 4 dimensions) referred to as Hyper-Meta-Proto-Elemental Matter. <http://www.gutenberg.org/files/16058/16058-h/16058-h.htm#Platelll>

<sup>vii</sup> ToCF page 94 see the bottom plane. See [http://www.makara.us/05ref/03charts/charts\\_toc.htm](http://www.makara.us/05ref/03charts/charts_toc.htm) Makara - LOGOS OF A SOLAR SYSTEM

<sup>viii</sup> Bailey, Letters on Occult Meditation, page 177 <http://www.lucitrust.org:8081/oobooks/?q=node/234>. The translation of the sentence is: there is a series of tones that break the charm quark and releases the subquarks. This break is actually the breaking of the strong nuclear force which will release power or positive energy.

<sup>ix</sup> There has been discussion concerning the apparent dinucleon of Hydrogen according to Besant however recent work at Michigan State University (March 2012) has confirmed the existence of dineutrons.

<http://physics.aps.org/articles/v5/30> ; <http://physicsworld.com/cws/article/news/2012/mar/14/dineutron-emission-seen-for-the-first-time> (Science has not fully accepted the results of Artemis Spyrou and colleagues at this time (Spyrou, et al., 2012)). The 2 dimensional drawing is of a 4 dimensional structure. (Besant stated three dimensional but this has been corrected by Bailey.) "The six little bodies (quarks) are arranged in two sets of three, forming two triangles that are not interchangeable, but are related to each other as object and image (which is object and which is image is relative). ..... Further, the six bodies are not all alike; they each contain three smaller bodies—each of these being an ultimate physical atom (sub-quark)." OC, page 12

<http://www.gutenberg.org/files/16058/16058-h/16058-h.htm#Platelll>, ToCF page 160

<http://www.lucitrust.org:8081/oobooks/?q=node/312> and SD (1<sup>st</sup> Edition), Vol 1, page 118

<http://www.theosociety.org/pasadena/sd/sd1-1-06.htm>

<sup>x</sup> ToCF, page 516 to 518, 693

<sup>xi</sup> ToCF, page 56 - This chart has been partly explained in this and the previous paper.

<http://www.thepg7.com/origins.html> See Figure 1. Note the text "digs holes in space".

<sup>xii</sup> An example of the Law of Economy (Quantum Mechanics) having a reflection of the Law of Attraction such as General Relativity is the red and blue shifting in the hydrogen bond. (Arunan, et al., 2011).

<sup>xiii</sup> SD (1<sup>st</sup> Edition), Vol 1, page 118 <http://www.theosociety.org/pasadena/sd/sd1-1-06.htm>

<sup>xiv</sup> Multiverse theory is suggested by Dr Hiranya Peiris a cosmologist at University College London. (Feeney, Johnson, Mortlock, & Peiris, 2011).

<sup>xv</sup> ToCF pages 159 to 161. <http://www.lucitrust.org:8081/oobooks/?q=node/312> Further, there is a slight drift or transfer of deuterium atoms from these universe-atoms into our Space which has been detected.

<sup>xvi</sup> SD (1<sup>st</sup> Edition), page 626 <http://www.theosociety.org/pasadena/sd/sd1-3-15.htm>

<sup>xvii</sup> The Universe also has its Etheric Double.

---

<sup>xviii</sup> Particle physicists have attempted to model neutral electricity with the theory of Gauge Bosons however, gluons, and bosons are imaginary particles. The photon is Ether with  $m > 0$ , charge = 0 (neutral electricity), and for the light photon a spin of -1. The light photon rotates in the opposite direction to the rotation of the plane. If a plane is rotating east to west, the light photon rotates west to east. ToCF page 152.  
<http://www.lucitrust.org:8081/oobooks/?q=node/312>. Physical plane light uses as a medium the second ether.  
<http://www.lucitrust.org:8081/oobooks/?q=node/316>, (read carefully) pages 318-321. Dimensions are not noted here however, Electricity as vibratory impulse, light, sound and colour are 7<sup>th</sup>, 6<sup>th</sup>, 5<sup>th</sup>, and 4<sup>th</sup> respectively. Further, what we see are only the reflections/images of the noted objects in our three dimensions. The corollary to this is that  $E = mc^2$  is only valid for the reflection of light as it counter rotates to the E2 plane rotation.

<sup>xix</sup> The Mendeleev's Table of the Elements is valid for 3 dimensions in 3 planes however; the periodic table needs to be pivoted for the 7 subplanes of the 7 subplanes of the 7<sup>th</sup> plane in 4 dimensions. The Periodic Law (after Crookes) noted by Annie Besant groups the elements by their four dimensional structure:  
<http://en.wikipedia.org/wiki/File:Periodic-Law-of-Occult-Chemistry.png>

<sup>xx</sup> Oxygen is also pregenetic and pre-geological. See SD (1<sup>st</sup> Edition), page 626

<sup>xxi</sup> There is no name in science for this substance however the closest hypothesized is strange matter. Akasha is the term used in ToCF page 59. <http://www.lucitrust.org:8081/oobooks/?q=node/308>

<sup>xxii</sup> The term sutratma means the 'silver thread' and is a line of energy in a threefold channel. Upon it are the focal points of energy referred to as permanent atoms. ToCF pages 58 and ToCF page 114, footnote 51

<sup>xxiii</sup> ToCF, page 1181. The figure has been partly corrected for shape. Permanent atoms are spheroidal not heart shaped, are slightly flattened at the North Pole and should be positive – not negative as shown in the original drawing. Just as Besant corrected Blavatsky, Bailey has corrected Besant and Babbitt. Please see ToCF, p. 531, No. 5. <http://www.lucitrust.org:8081/oobooks/?q=node/338>

<sup>xxiv</sup> Planet TrES-2b is noted by the Royal Astronomical Society as the darkest exoplanet spotted by astronomers. (Harvard-Smithsonian, 2011). The NOE Hypothesis states that this planet is coalescing out from the root of matter and is gradually coming out of dark matter into the visible spectrum.

<sup>xxv</sup> Professor Kei Hirose has recreated the conditions found at the Earth's core in his laboratory at the SPring-8 synchrotron near Osaka, Japan. <http://www.bbc.co.uk/news/uk-14678004> The NOE Hypothesis confirms the crystals and caverns however it differs in that the material at the core is not iron-nickel but diamond for Earth (please see Bailey, A Treatise on the Seven Rays, Volume 1, Esoteric Psychology, pages 372- 373, <http://www.lucitrust.org:8081/oobooks/?q=node/408> combined with page 420 , Ray VII ..... Ceremonial Order or Magic <http://www.lucitrust.org:8081/oobooks/?q=node/423>).

<sup>xxvi</sup> Prana is a form of energy which is positive radiation. It is non-harmful. ToCF page 60.

<sup>xxvii</sup> Part 2 in defining dark matter is found in the original document - Holloway 2010.

<sup>xxviii</sup> SD (1<sup>st</sup> Edition), Vol 1, page 153 (<http://www.theosociety.org/pasadena/sd/sd1-1-08.htm>)

<sup>xxix</sup> Dr. Alexander Kashlinsky released a paper that found evidence of a "surprisingly coherent" 600–1000 km/s flow of clusters toward a 20-degree patch of sky between the constellations of Centaurus and Vela. (A. Kashlinsky, 2008). The NOE Hypothesis states that our universe is young and just beginning to overcome inertia and will eventually proceed to rotate around a Black Hole. The dark flow is evidence of this rotation gaining momentum.

<sup>xxx</sup> SD (1<sup>st</sup> Edition), Vol 1, page 36 and ToCF, page 39-40, footnote 6

<sup>xxxi</sup> Most of the statements in this section are copied directly come from a ToCF, pages 273 to 288.

<sup>xxxii</sup> A Heavenly Man is the name given to the entity, Planetary Logos, whose permanent atom appears to us as a planet. For example Pluto and Jupiter are Heavenly Men or Planetary Logoi. Pluto is a First Ray (not discussed in this essay) planet. The 1<sup>st</sup> Ray has a tendency to concentrate, merge or make small hence the tiny size of Pluto. Jupiter is a 2<sup>nd</sup> Ray planet. The 2<sup>nd</sup> Ray tends to expand hence its large size. Both are Planetary Logoi and both are planets – size does not matter. (Bailey, Esoteric Psychology – Volume 1, page 335 <http://www.lucitrust.org:8081/oobooks/?q=node/405>) The classification of what constitutes a planet must be based on the consciousness of the indwelling entity.

<sup>xxxiii</sup> ToCF, pages 287 -288 <http://www.lucitrust.org:8081/oobooks/?q=node/315> and page 458, number 3. <http://www.lucitrust.org:8081/oobooks/?q=node/324>

<sup>xxxiv</sup> SD (1<sup>st</sup> Edition), Vol 1, page 37 <http://www.theosociety.org/pasadena/sd/sd1-1-02.htm>

<sup>xxxv</sup> ToCF page 279 <http://www.lucitrust.org:8081/oobooks/?q=node/315>