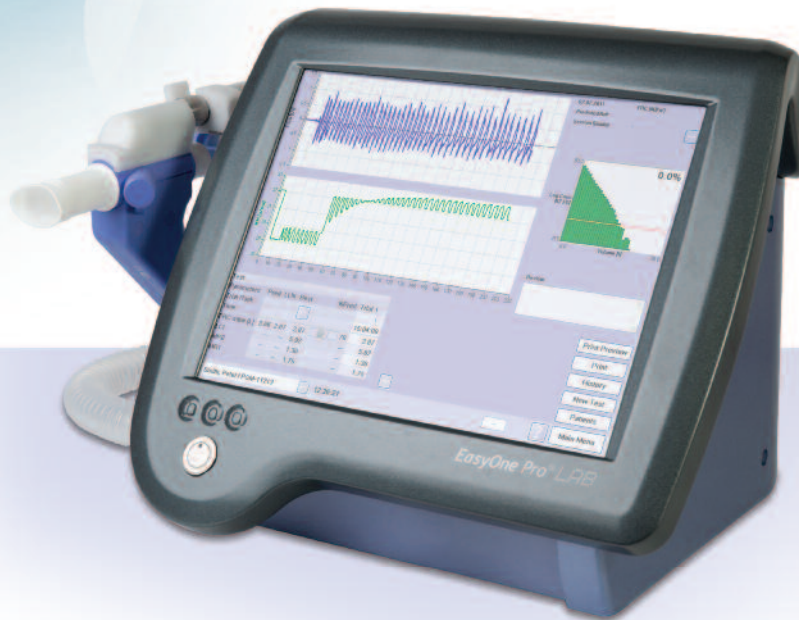




EasyOne Pro[®] LAB

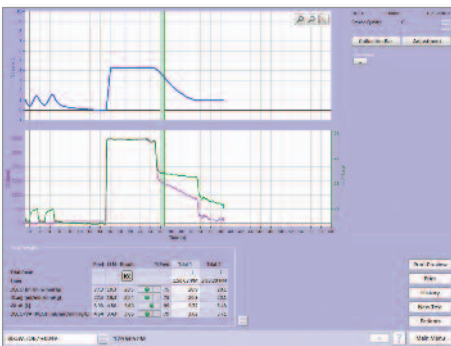
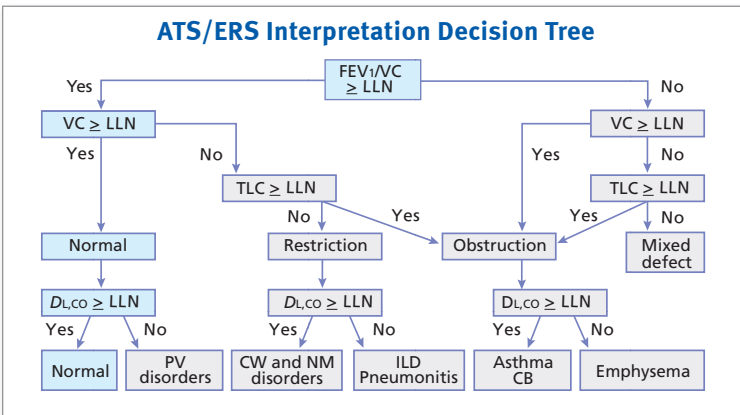
*Multiple-breath nitrogen washout to obtain complete lung volumes,
FRC and LCI (lung clearance index)*



Features

EasyOne Pro LAB offers improved efficiency and quality of care by providing complete pulmonary function testing on site

- Multiple-Breath N₂ washout for FRC, RV, TLC, LCI
- Single Breath CO Diffusion (DLCO)
- Spirometry
- Flexible EMR capabilities
- No warm-up time
- High-resolution color touch screen
- Automatic and fast calibration for each test performed
- Automated ATS/ERS interpretation
- Challenge testing with manitol and methacholine protocols
- Wide range of data export options
- Easy raw data export for scientific use
- No service contracts
- Easy software upgrades
- Remote support capability



Single breath DLCO measurement



Specifications	
Flow/Volume Sensor	
Type:	Ultrasonic transit-time
Range:	±16 l/s
Resolution:	4 ml/s
Accuracy:	±2% or 0.02 l/s
Resistance:	< 1.5 cmH ₂ O/l/s at 12 l/s
CO Sensor	
Type:	Non-dispersive infrared
Range:	0 to 0.35%
Resolution:	0.0001%
Accuracy:	< 0.001%
Tracer Gas Sensor (Helium, N₂)	
Type:	Ultrasonic transit-time
Range:	0 to 50%, 0 to 100%
Resolution:	0.01%, 0.05%
Accuracy:	0.05%, 0.2%
CO₂ Sensor	
Type:	Non-dispersive infrared
Range:	0 to 15%
Resolution:	0.005%
Accuracy:	±0.05% (from 0 to 5%)
Standards	
Quality System:	ISO 9001, ISO 13485
FDA:	510(k) market clearance
MDD 93/42/EEC:	CE marked
Electrical:	EN 60601-1, EN 60601-1-2
Electrical and Environmental Requirements	
Supply:	100 to 240 VAC, 50/60 Hz
Temperature:	10 to 40°C
Humidity:	30 to 75% (non condensing)

