



EasyOne Pro®

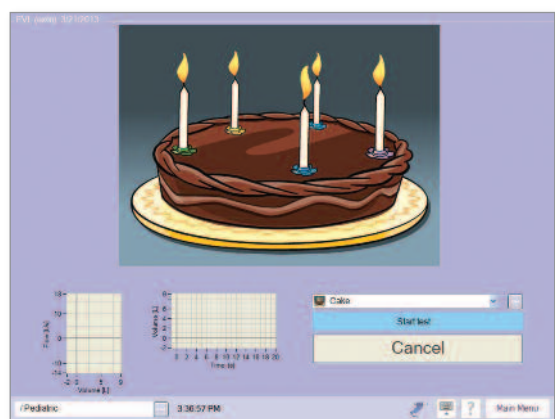
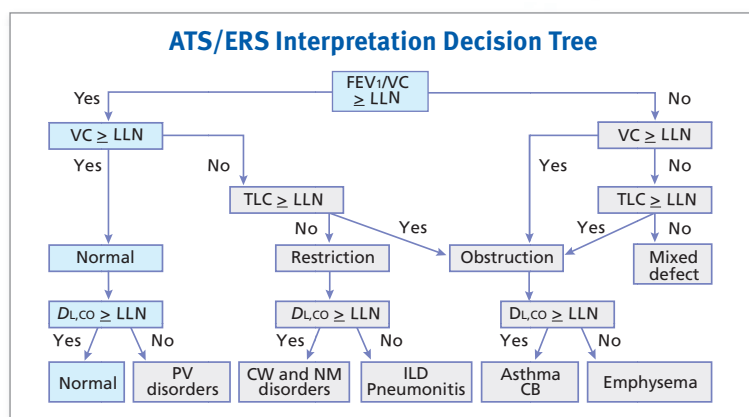
Portable single breath DLCO device allowing physicians to provide their patients with prompt, accurate diagnosis and treatment



Features

EasyOne Pro performs PFTs in under 30 minutes all in one square foot

- Single Breath CO Diffusion (DLCO)
- Spirometry
- Flexible EMR capabilities
- No warm-up time
- High-resolution color touch screen
- Automatic and fast calibration for each test performed
- Automated interpretation (ATS/ERS)
- Challenge testing with manitol and methacholine protocols
- Wide range of data export options
- Easy raw data export for scientific use
- No service contracts
- Easy software upgrades
- Remote support capability



*Spirometry
incentive screen*

Specifications

Flow/Volume Sensor

Type: Ultrasonic transit-time

Range: ±16 l/s

Resolution: 4 ml/s

Accuracy: ±2% or 0.02 l/s

Resistance: < 1.5 cmH₂O/l/s at 12 l/s

CO Sensor

Type: Non-dispersive infrared

Range: 0 to 0.35%

Resolution: 0.0001%

Accuracy: < 0.001%

Tracer Gas Sensor (Helium)

Type: Ultrasonic transit-time

Range: 0 to 50%

Resolution: 0.01%

Accuracy: 0.05%

Standards

Quality System: ISO 9001, ISO 13485

FDA: 510(k) market clearance

MDD 93/42/EEC: CE marked

Electrical: EN 60601-1, EN 60601-1-2

Electrical and Environmental Requirements

Supply: 100 to 240 VAC, 50/60 Hz

Temperature: 5 to 40°C

Humidity: 15 to 95% (non condensing)



nddmedical



nddmedical



nddmed



nddmedical

