

# ARJOHUNTLEIGH

GETINGE GROUP

## BD4000XS SERIES

ANTEPARTUM MONITORING  
WITH CONNECTIVITY



...with people in mind

# ULTIMATE SIMPLICITY WITH CONNECTIVITY

Designed to deliver cost effective solutions without compromising quality, precision and performance. Ideally suited for the antenatal monitoring environment, the *BD4000XS* provides the most cost effective and flexible solution with connectivity.

## High Sensitivity Transducers

Incorporating multi-crystal high sensitivity transducers; reduced in size to be less obtrusive and provide added comfort during monitoring. The TOCO transducer with its smooth surface reduces noticeable marks and enhances comfort. Both transducers incorporate a unique belt button design aiding transducer placement.

## Ease of Use

Effortless to operate, with its intuitive user interface and controls, requires minimum training, reducing time and cost.

- User-customizable trace annotation facility
- Automatic fetal movement detection
- Maternally sensed fetal movement marker

## Twins Capable as Standard

Twin fetal heart rate channels are included as standard together with an external UA and maternally sensed fetal movement marker. Another transducer simply needs to be added to upgrade to twins.

## Clear Rate Display

The display is comprised of a large LCD, back lit for low light clinical environments and 2 large LED clear rate displays. Clear visual display of FHR and contractions data and signal quality indicators.



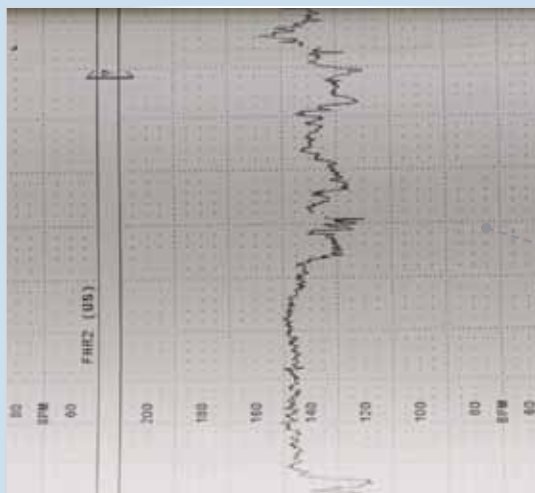
# UNIQUE NO COMPROMISE FULL SIZE TWIN FHR SCALE PRINTING

## No compromise traces

“Dual channel” extra width Z-fold chart printout for unique optimum twins presentation on plain thermal paper for low cost, high accuracy printing (standard format paper can also be used).

## User adjustable alarms

- Tachycardia
- Bradycardia
- Loss of Contact
- Cross-Channel rate verification alerts



## Connectivity

Interface to a digital NST recording system “Obstetric Archive” or other NST recording systems is available via RS232. This enables electronic data storage, reducing paper print-outs, providing even lower running costs and less environmental impact.

## Product Information

### Ultrasound

Technique	Directional Pulsed Doppler
Frequency	1.5MHz
Measurement Range FHR	50-210bpm
ISPTA (intensity)	<6mW/cm2
Rate Calculation	Autocorrelation

### Uterine Activity External

Range	0-100 (relative Units)
Sensitivity	100% FSD equivalent to 128g
Baseline	Base line set to +20%
Resolution	1 Relative Unit
Excitation voltage	5V
Fetal Movement Detection	User adjustable: Threshold range 0-99%

### Alerts

Tachycardia (High heart rate)	FHR threshold range 150 – 200bpm
Bradycardia (Low heart rate)	FHR threshold range 50 – 120bpm
Loss of Contact (Drop out)	% Loss of Contact 0 – 99

<b>Display</b>	7-Segment LED and 3 Channels (FHR I, FHR II, UC)
----------------	---

### Printer

Resolution	8 dots per mm
Print Head	128mm thick film
Paper	Plain thermal paper 2 size variants

### Power

Rated AC supply voltage	110V/120V/220V/240V +/-10%
Supply frequency	50 – 60Hz
Power consumption	100VA max

## Physical characteristics

Weight	Approx. 4.5Kg (9.9lbs)
Dimensions	380 x 250 x 93mm (15 x 9.8 x 3.7 )
Case material (main unit)	ABS Polycarbonate alloy
Power supply	100-250Vrms, 50/60Hz
Safety standards	IEC 60601-1, CE marked to Medical Devices
Directive	IEC1157
<b>Event Markers</b>	
Patient Event Marker	Handheld push-button prints markers at base of FHR channel
Clinical Event Marker	Control panel push-button prints markers at top of FHR channel
Trace Annotation	10 user selectable clinical action messages - selected text printed after clinical event marker.
Data Interface	2 x RS232 ports (9 pin D-type on rear panel) provide: Service data interface Trace annotation message editing



Easy to move, easy to mount

- Wall mount option
- Cart option

Huntleigh is a division of ArjoHuntleigh. Visit [www.huntleigh-diagnostics.com](http://www.huntleigh-diagnostics.com) for more information.

Use only ArjoHuntleigh designed parts, i.e. parts specifically designed for the purpose, on equipment and products supplied by ArjoHuntleigh. As our policy is one of continuous development, we reserve the right to modify designs and specifications without prior notice. © and ™ are trademarks belonging to the ArjoHuntleigh group of companies. © ArjoHuntleigh, 2011

# ARJOHUNTLEIGH

## GETINGE GROUP

[www.ArjoHuntleigh.com](http://www.ArjoHuntleigh.com)

GETINGE GROUP is a leading global provider of products and systems that contribute to quality enhancement and cost efficiency within healthcare and life sciences. We operate under the three brands of ArjoHuntleigh, GETINGE and MAQUET. **ArjoHuntleigh** focuses on patient mobility and wound management solutions. **GETINGE** provides solutions for infection control within healthcare and contamination prevention within life sciences. **MAQUET** specializes in solutions, therapies and products for surgical interventions and intensive care.

**ArjoHuntleigh Inc.**  
2349 West Lake Street  
Addison, Illinois 60101  
Phone: 800-323-1245  
Fax: 630-925-7969

**CE**  
**0088**