

STAINLESS STEEL
HAND SINKS
SPECIAL PURPOSE

Keyhole Bracket for
easier installation
and greater stability.



7-PS-55



7-PS-64



7-PS-72



7-PS-727
CLASS 1 SECURITY
INSTALLATION



7-PS-747
CLASS 2 SECURITY
INSTALLATION

Item #: _____ **Qty #:** _____

Model #: _____

Project #: _____

FEATURES:

One piece **Deep Drawn** sink bowl design.

Sink bowl is 10" x 14" x 5".

All sink bowls have a large liberal radii with a minimum dimension of 2" and are rectangular in design for increased capacity.

Keyhole wall mount bracket.

Stainless steel basket drain 1-1/2" IPS.

Splash mounted 4" O.C. gooseneck faucet furnished with aerator.

Specific Features:

7-PS-55 features eye wash faucet attachment.

7-PS-64 features tubular support brackets.

7-PS-72 is H.A.C.C.P. compliant hand sink featuring slow, self-closing, metering faucet with mixing valve.

7-PS-727 Unit totally enclosed. Bottom security panel provides access for installation and services. Vandal Proof Aerators. All fasteners are stainless steel tamper proof. Concealed drain. Heavy duty gooseneck faucet. Towel dispenser with hinged towel box with lock. Unit uses standard C-fold towels. Liquid Soap dispenser.

7-PS-747 Unit totally enclosed. Bottom security panel provides access for installation and services. Vandal Proof Aerators. All fasteners are stainless steel tamper proof. Concealed drain. Heavy duty gooseneck faucet.

CONSTRUCTION:

All TIG welded.

Welded areas blended to match adjacent surfaces and to a satin finish.

Die formed Countertop Edge with a 3/8" No-Drip offset.

One sheet of stainless steel - No Seams.

MATERIAL:

Heavy gauge type 304 series stainless steel.

Wall mounting bracket is galvanized and of offset design.

All fittings are brass / chrome plated unless otherwise indicated.

MECHANICAL:

Faucet supply is 1/2" IPS male thread hot and cold.

**FOR REPLACEMENT FAUCET, DRAINS
AND ACCESSORIES
SEE PAGE B-13 & SECTION G**

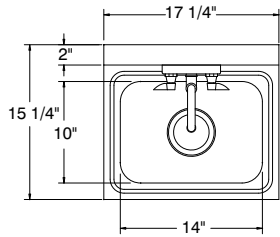
DIMENSIONS and SPECIFICATIONS

TOL Overall: $\pm .500$ " Interior: $\pm .250$ "

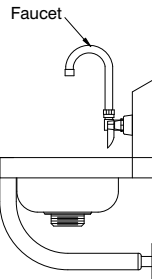
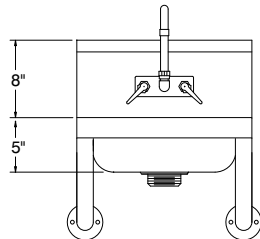
FITTINGS SUPPLIED AS SHOWN

ALL DIMENSIONS ARE TYPICAL

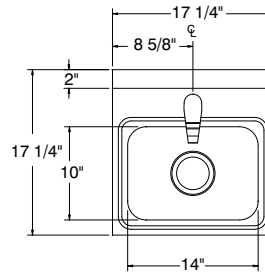
7-PS-64



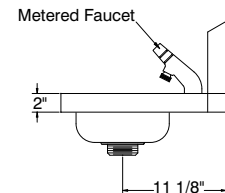
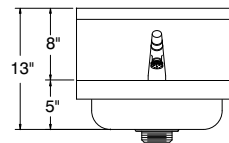
25 lbs.



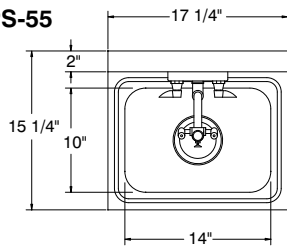
7-PS-72



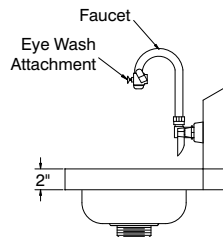
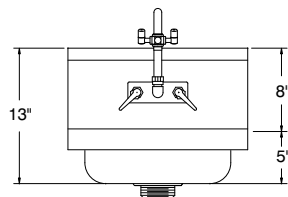
15 lbs.



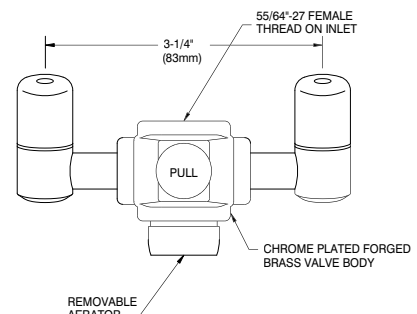
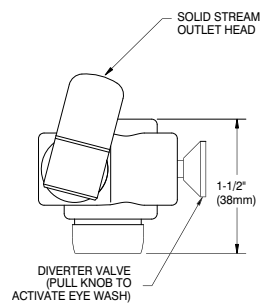
7-PS-55



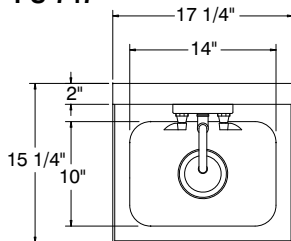
15 lbs.



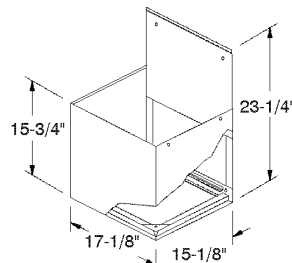
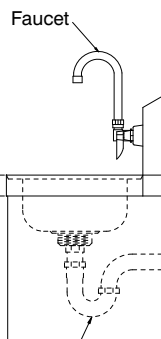
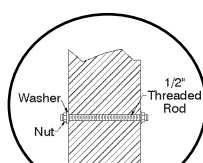
EYE WASH DETAIL



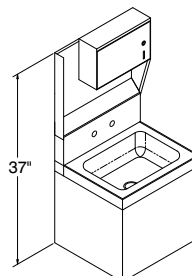
7-PS-747



Mounting Detail



Security Skirt Enclosure



7-PS-727 Unit with Towel Dispenser

SUGGESTED PLUMBING

