



7-PS-62

SPACE SAVER



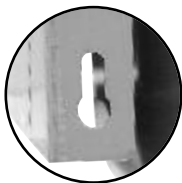
7-PS-63

See page A-7 for more
Space Saver Units



7-PS-30

Keyhole Bracket for
easier installation
and greater stability.



7-PS-82

Item #: _____ **Qty #:** _____
Model #: _____
Project #: _____

FEATURES:

One piece **Deep Drawn** sink bowl design.

7-PS-30 Sink bowl is 16" x 14" x 6-1/2".

7-PS-62 & 7-PS-82 Sink bowl is 10" x 14" x 5".

7-PS-63 Sink bowl is 9" x 9" x 5".

Keyhole wall mount bracket.

Stainless steel basket drain 1-1/2" IPS.

Knee valve operated faucet provides true hands-free operation.

All sink bowls have a large liberal radii with a minimum dimension of 2" and are rectangular in design for increased capacity.

Apron conceals plumbing on all three sides.

"Hands Free" splash mounted gooseneck faucet furnished with aerator.

Specific Features:

7-PS-82 has Towel Dispenser with hinged towel box. Unit uses standard C-fold towels. Liquid soap dispenser also included.

CONSTRUCTION:

All TIG welded.

Welded areas blended to match adjacent surfaces and to a satin finish.

Die formed Countertop Edge with a 3/8" No-Drip offset.

One sheet of stainless steel - No Seams.

MATERIAL:

Heavy gauge type 304 series stainless steel.

Wall mounting bracket is galvanized steel and of offset design.

All fittings are brass / chrome plated unless otherwise indicated.

MECHANICAL:

Faucet supply is 1/2" IPS male thread hot and cold.

Knee Valve is barrel type and is activated by pedal.

(Contractor on site must connect faucet to knee operated valves.)

**FOR REPLACEMENT FAUCET, DRAINS
AND ACCESSORIES
SEE PAGE B-13 & SECTION G**

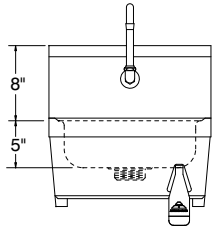
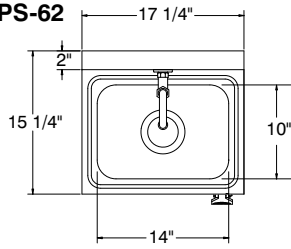
DIMENSIONS and SPECIFICATIONS

TOL Overall: ± .500" Interior: ± .250"

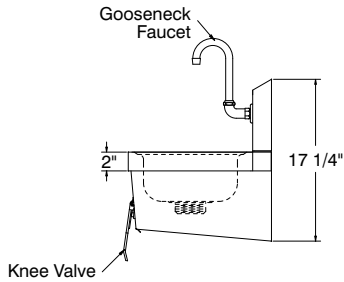
FITTINGS SUPPLIED AS SHOWN

ALL DIMENSIONS ARE TYPICAL

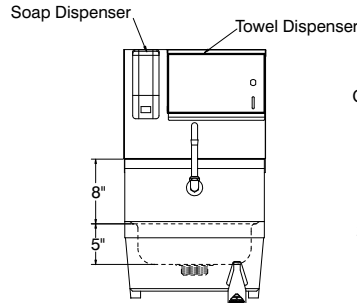
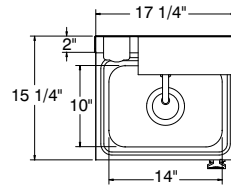
7-PS-62



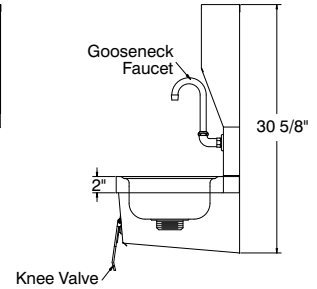
28 lbs.



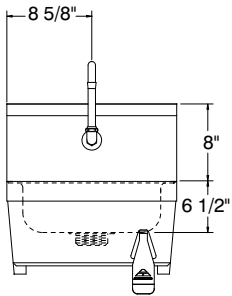
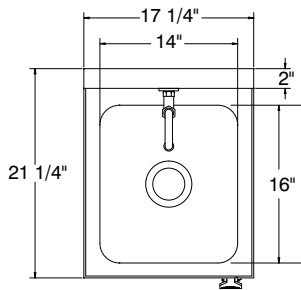
7-PS-82



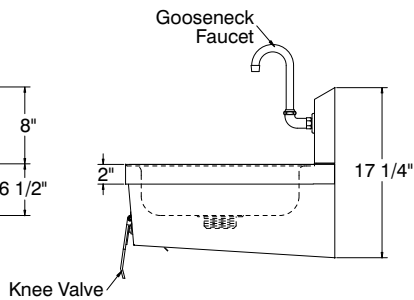
40 lbs.



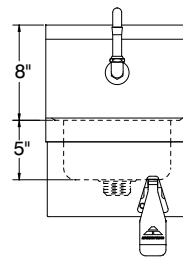
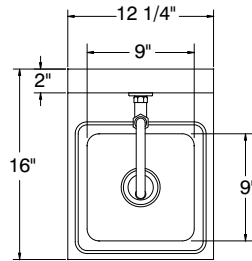
7-PS-30



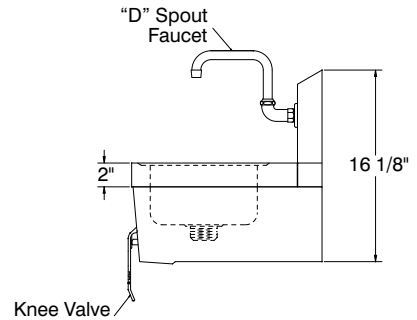
40 lbs.



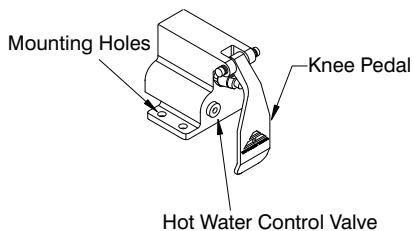
7-PS-63



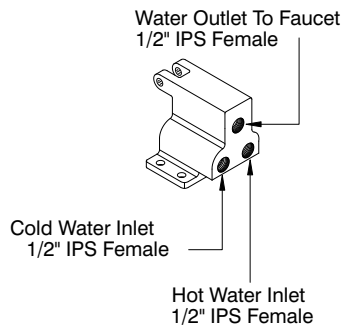
22 lbs.



KNEE VALVE DETAIL



1/2" IPS FEMALE



SUGGESTED PLUMBING

