



**DI-1-146**  
**Drop-In style**



**7-PS-25**



**7-PS-26**



Optional A.D.A. Compliant Bubbler can  
be added to the **7-PS-25 & 7-PS-26**  
Use Model # K-47

**Item #:** \_\_\_\_\_ **Qty #:** \_\_\_\_\_

**Model #:** \_\_\_\_\_

**Project #:** \_\_\_\_\_

**FEATURES:**

One piece **Deep Drawn** sink bowl design.

Sink bowl is 16" x 14" x 5".

All sink bowls have a large liberal radii with a minimum dimension of 2" and are rectangular in design for increased capacity.

Keyhole wall mount bracket (Excludes DI-1-146).

1 1/2" stainless steel drain with strainer plate.

**Specific Features:**

**DI-1-146 & DI-1-147** 1 1/2" stainless steel drain with flat strainer drain & 4" O.C. deck mounted gooseneck faucet furnished with aerator.

**DI-1-146** self-rim countertop.

**DI-1-147** undercounter design.

**7-PS-25** "Hands Free" 6 .O.C. deck mounted gooseneck faucet with wrist handles & liquid soap dispenser.

**7-PS-26** includes a "Hands Free" battery operated gooseneck faucet (K-181 Electronic faucet available) & soap dispenser.

**CONSTRUCTION:**

All TIG welded.

Welded areas blended to match adjacent surfaces and to a satin finish.

Die formed Countertop Edge with a 3/8" No-Drip offset.

One sheet of stainless steel - No Seams.

**MATERIAL:**

Heavy gauge type 304 series stainless steel.

Wall mounting bracket is Galvanized and of offset design (Excludes DI-1-146).

All fittings are brass / chrome plated unless otherwise indicated.

**MECHANICAL:**

Faucet supply is 1/2" IPS male thread hot and cold.

**FOR REPLACEMENT FAUCET, DRAINS  
AND ACCESSORIES  
SEE PAGE B-13 & SECTION G**

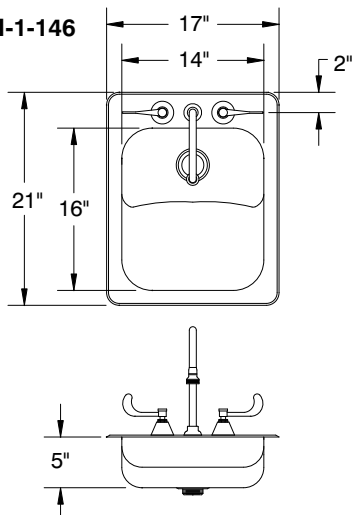
# DIMENSIONS and SPECIFICATIONS

TOL Overall:  $\pm .500$ " Interior:  $\pm .250$ "

FITTINGS SUPPLIED AS SHOWN

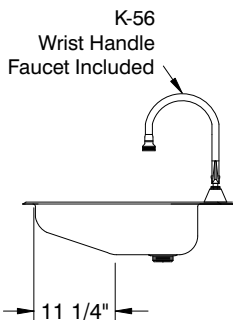
ALL DIMENSIONS ARE TYPICAL

DI-1-146



**COUNTERTOP  
INSTALLATION**

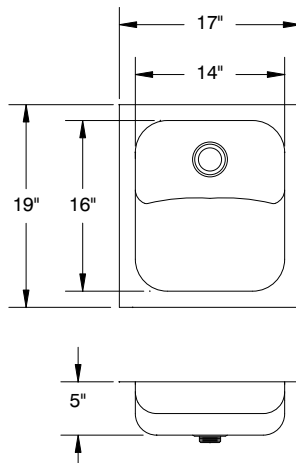
**Cut-Out Size**  
16 1/4" x 20 1/4"  
1 1/4" radius corners



Approx. Wt. 22 lbs.

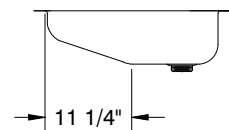
Includes Faucet & Drain

DI-1-147



**UNDERMOUNT  
INSTALLATION**

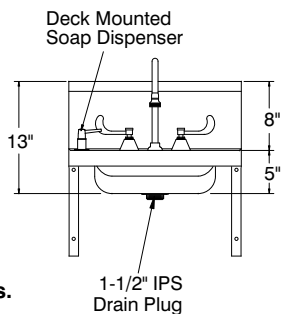
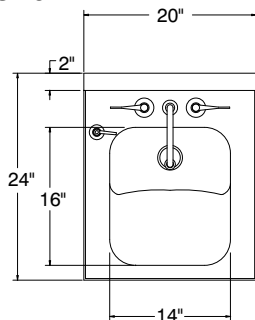
**Cut-Out Size**  
13 1/4" x 15 1/4"  
2 5/8" radius corners



Approx. Wt. 18 lbs.

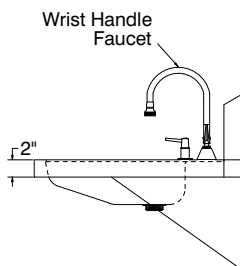
Includes Drain

7-PS-25

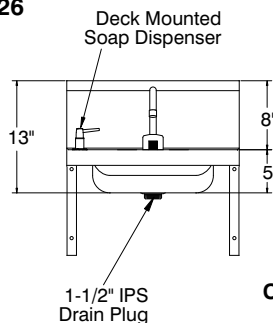


25 lbs.

1-1/2" IPS  
Drain Plug



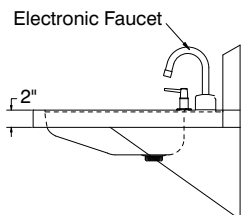
7-PS-26



25 lbs.

1-1/2" IPS  
Drain Plug

**CENTER FAUCET HOLE ONLY  
FOR 7-PS-26**



## SUGGESTED PLUMBING FOR 7-PS-25 & 7-PS-26

