



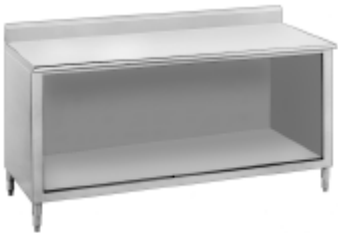
# STAINLESS STEEL OPEN BASE STYLE ENCLOSED BASE WORK TABLES NSF



Flat Top



1 1/2\" Backsplash



5\" Backsplash

**Item #:** \_\_\_\_\_ **Qty #:** \_\_\_\_\_

**Model #:** \_\_\_\_\_

**Project #:** \_\_\_\_\_

### 24\" WIDE

Length	FLAT TOP	1 1/2\" SPLASH	5\" SPLASH	Wt.
36\"	EB-SS-243	EF-SS-243	EK-SS-243	200 lbs.
48\"	EB-SS-244	EF-SS-244	EK-SS-244	240 lbs.
60\"	EB-SS-245	EF-SS-245	EK-SS-245	280 lbs.
72\"	EB-SS-246	EF-SS-246	EK-SS-246	325 lbs.
84\"	EB-SS-247	EF-SS-247	EK-SS-247	365 lbs.
96\"	EB-SS-248	EF-SS-248	EK-SS-248	415 lbs.
108\"	EB-SS-249	EF-SS-249	EK-SS-249	455 lbs.
120\"	EB-SS-2410	EF-SS-2410	EK-SS-2410	490 lbs.
144\"	EB-SS-2412	EF-SS-2412	EK-SS-2412	560 lbs.

### 30\" WIDE

Length	FLAT TOP	1 1/2\" SPLASH	5\" SPLASH	Wt.
36\"	EB-SS-303	EF-SS-303	EK-SS-303	225 lbs.
48\"	EB-SS-304	EF-SS-304	EK-SS-304	260 lbs.
60\"	EB-SS-305	EF-SS-305	EK-SS-305	300 lbs.
72\"	EB-SS-306	EF-SS-306	EK-SS-306	340 lbs.
84\"	EB-SS-307	EF-SS-307	EK-SS-307	380 lbs.
96\"	EB-SS-308	EF-SS-308	EK-SS-308	425 lbs.
108\"	EB-SS-309	EF-SS-309	EK-SS-309	465 lbs.
120\"	EB-SS-3010	EF-SS-3010	EK-SS-3010	515 lbs.
144\"	EB-SS-3012	EF-SS-3012	EK-SS-3012	600 lbs.

### 36\" WIDE

Length	FLAT TOP	1 1/2\" SPLASH	5\" SPLASH	Wt.
36\"	EB-SS-363	EF-SS-363	EK-SS-363	250 lbs.
48\"	EB-SS-364	EF-SS-364	EK-SS-364	290 lbs.
60\"	EB-SS-365	EF-SS-365	EK-SS-365	330 lbs.
72\"	EB-SS-366	EF-SS-366	EK-SS-366	375 lbs.
84\"	EB-SS-367	EF-SS-367	EK-SS-367	415 lbs.
96\"	EB-SS-368	EF-SS-368	EK-SS-368	460 lbs.
108\"	EB-SS-369	EF-SS-369	EK-SS-369	505 lbs.
120\"	EB-SS-3610	EF-SS-3610	EK-SS-3610	555 lbs.
144\"	EB-SS-3612	EF-SS-3612	EK-SS-3612	625 lbs.

**FEATURES:**

**FLAT TOP** is furnished with a 1 5/8\" sanitary rolled rim on the front and 1 5/8\" square bend edges on the 2 sides and rear.

**1 1/2\" SPLASH** is furnished with a 1 5/8\" sanitary rolled rim on the front side and 1 5/8\" square bend edges on the 2 sides and a 1 1/2\" splash of single metal thickness on the rear side.

**5\" SPLASH** is furnished with a 1 5/8\" sanitary rolled rim on the front side and 1 5/8\" square bend edges on the 2 sides and a 5\" splash with a 1\" return on the rear side.

**CONSTRUCTION:**

All TIG welded. Exposed areas finished to match adjacent surfaces.

Entire Top is mechanically polished to a satin finish and is sound deadened.

Hat section secured to Top reinforces and maintains level working surface.

UNIT-BODY DESIGN sides, back and shelf are welded to form a single rigid structure.

Gussets welded to support hat sections.

**MATERIAL:**

TOP is 14 gauge stainless steel type "304" series with galvanized understructure.

BODY is 18 gauge stainless steel type "430" series.

LEGS are 1 5/8\" diameter tubular stainless steel with stainless steel gussets and 1\" adjustable stainless steel bullet feet.

**Mid Shelves Are Available.**  
**To Add a Mid Shelf, Add "M" After each Model Number.**

<p><b>NEW YORK</b>  (800) 645-3166  Fax: (631) 242-6900</p>	<p><b>GEORGIA</b>  (800) 832-1218  Fax: (770) 775-5625</p>	<p><b>TEXAS</b>  (800) 527-0353  Fax: (972) 932-4795</p>	<p><b>NEVADA</b>  (800) 446-8684  Fax: (775) 972-1578</p>
<p>For Assistance with  Smart Modifications &amp; Accessories Call: 1-800-498-6634 Fax: 631-586-2933  <a href="mailto:smartfab@advancetabco.com" style="color: white;">smartfab@advancetabco.com</a></p>			

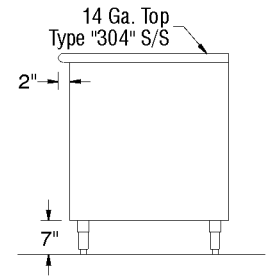
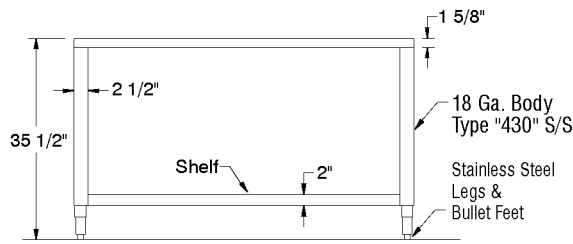
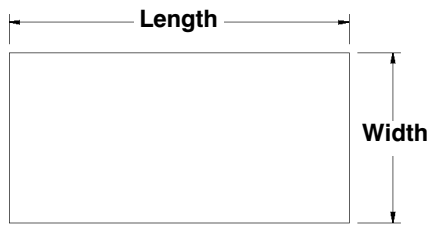
# DETAILS and SPECIFICATIONS

TOL  $\pm$  .500"

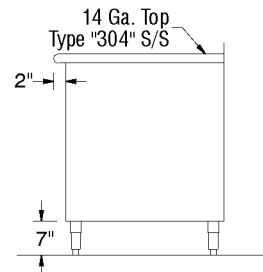
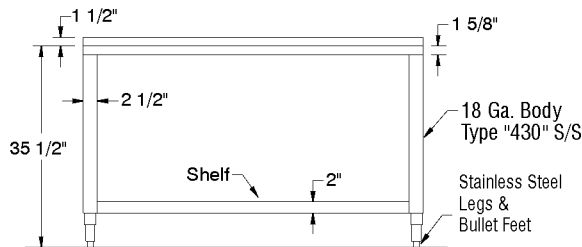
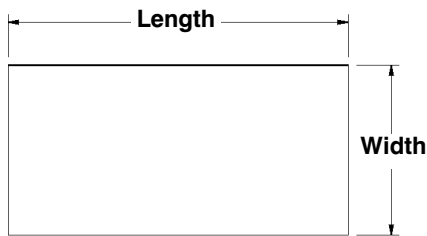
Units 7' and larger are furnished with 6 legs.

ALL DIMENSIONS ARE TYPICAL

## EB-Series Flat Top



## EF-Series 1 1/2" Rear Splash



## EK-Series 5" Rear Splash

