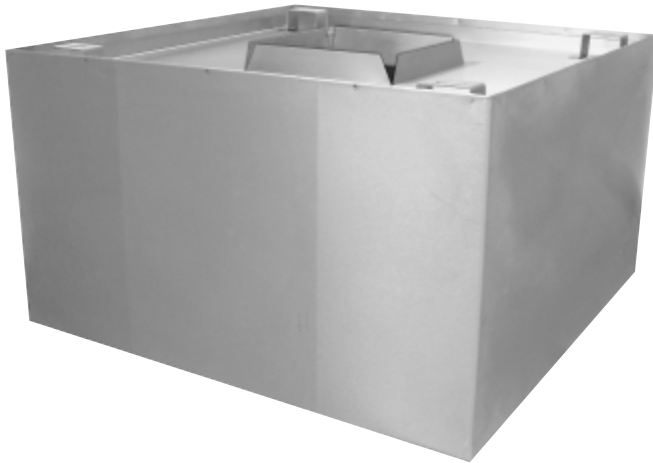


STAINLESS STEEL CONDENSATE HOODS

Item #: _____ **Qty #:** _____

Model #: _____

Project #: _____



FEATURES:

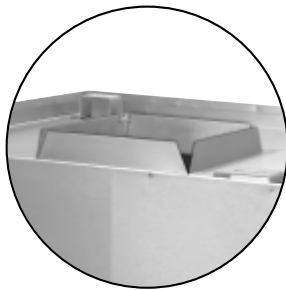
Wall and Ceiling Mounting Provision facilitates installation.
2" Exhaust Collar.
1-1/2" Gutter along bottom perimeter with 3/8" Drain at rear.

CONSTRUCTION:

Flanged Seams are sealed - water tight.

MATERIAL:

Heavy Duty Gauge Stainless Steel Type "300".



8" x 10" vent opening.
Collar is centered 2" in height.

Model #	L	W
CH-3636	36"	36"
CH-4242	42"	42"
CH-4848	48"	48"

OPTIONAL MODIFICATIONS	Model #	Size
Specify alternate Collar Location	CH-61	
Additional Length or Width	CH-56	

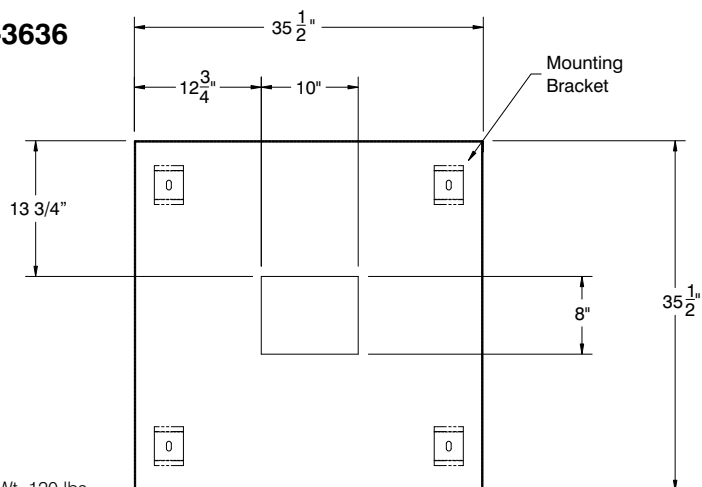
This item is not UL or NFPA Listed.

DIMENSIONS and SPECIFICATIONS

ALL DIMENSIONS ARE TYPICAL

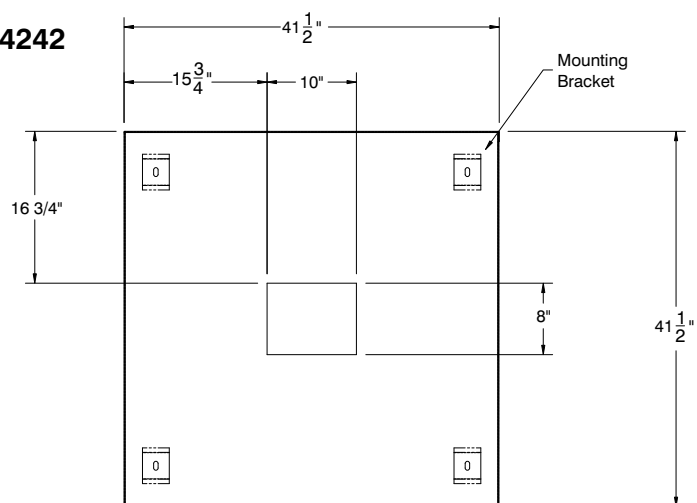
TOL $\pm .500"$

CH-3636



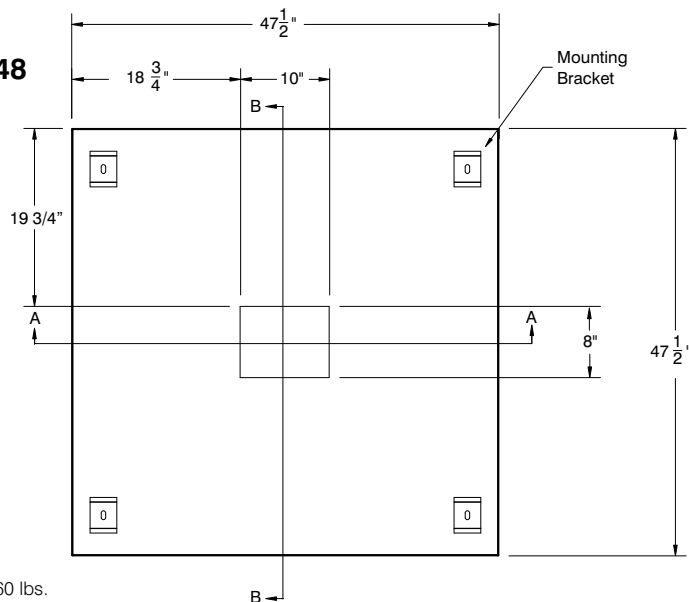
Aprox. Wt. 120 lbs.

CH-4242

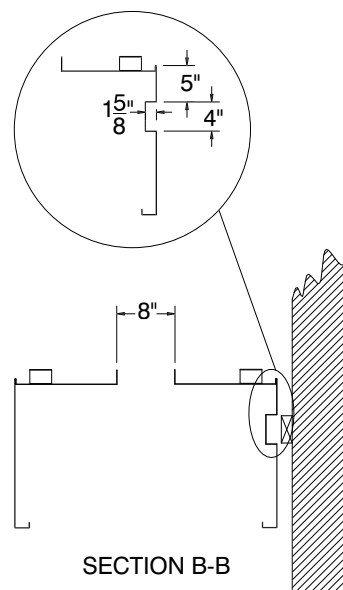
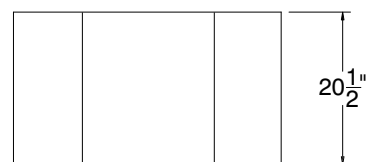
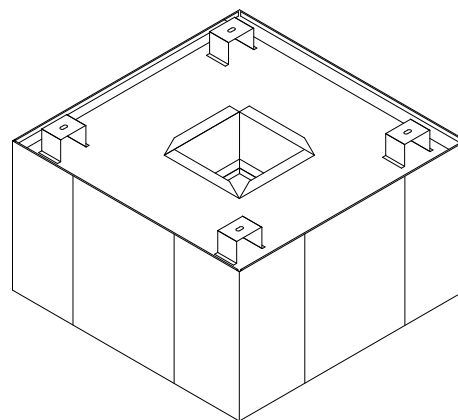


Aprox. Wt. 140 lbs.

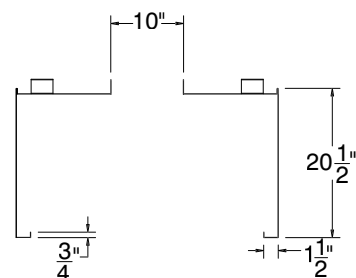
CH-4848



Aprox. Wt. 160 lbs.



SECTION B-B



SECTION A-A

