



STAINLESS STEEL  
SQUARE CORNER SCULLERY  
**BUDGET SINKS**

"400" Series "600" Series

**Item #:** \_\_\_\_\_ **Qty #:** \_\_\_\_\_  
**Model #:** \_\_\_\_\_  
**Project #:** \_\_\_\_\_



**ONE COMPARTMENT**



**THREE COMPARTMENT**



**TWO COMPARTMENT**



**FOUR COMPARTMENT**

**MATERIAL:**

"400" Series is 16 gauge type 430 Series.  
 "600" Series is 16 gauge type 304 Series.  
 Galvanized tubular legs.  
 1" adjustable plastic bullet feet.

**CONSTRUCTION:**

All heli-arc welded.  
 Welded areas blended to match adjacent surfaces and to a satin finish.

**MECHANICAL:**

Supply is 1/2" hot & cold.  
 Faucet holes on 8" O.C.  
 Waste drains are 1 1/2" IPS basket type and are included.  
 Faucets are not included (see accessories).  
 Four compartment units require two faucets.  
 Three compartment units with 24" sink bowls require two faucets.

**DETACHABLE DRAINBOARDS**



Model #	Qty
N-5-818	
N-5-18	
N-5-24	
N-5-30	
N-5-36	
N-5-48	
N-54-24	
N-54-36	
N-54-48	

Drainboards 36" and 48" are supplied with legs for support.



**NEW YORK**  
 (800) 645-3166  
 Fax: (631) 242-6900

**GEORGIA**  
 (800) 832-1218  
 Fax: (770) 775-5625

**TEXAS**  
 (800) 527-0353  
 Fax: (972) 932-4795

**NEVADA**  
 (800) 446-8684  
 Fax: (775) 972-1578

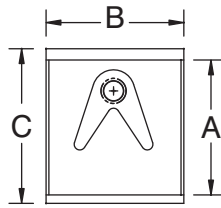
For Assistance with Smart Modifications & Accessories Call: **1-800-498-6634** Fax: **631-586-2933**  
 smartfab@advancetabco.com

# DIMENSIONS and SPECIFICATIONS

TOL Overall: ± .500" Interior: ± .250"

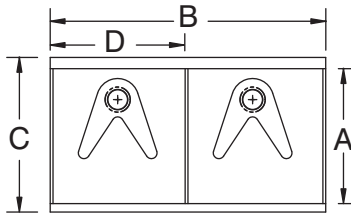
ALL DIMENSIONS ARE TYPICAL

## ONE COMPARTMENT



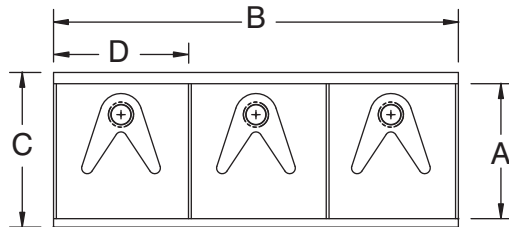
A	B	C	"400" Series 16 Ga. S/S "430"	"600" Series 16 Ga. S/S "300"	Ship Weight
18"	18"	21 1/2"	4-81-18	6-81-18	45 lbs.
21"	18"	24 1/2"	4-1-18	6-1-18	47 lbs.
21"	24"	24 1/2"	4-1-24	6-1-24	53 lbs.
21"	36"	24 1/2"	4-1-36	6-1-36	66 lbs.
24"	24"	27 1/2"	4-41-24	6-41-24	53 lbs.
24"	36"	27 1/2"	4-41-36	6-41-36	69 lbs.

## TWO COMPARTMENTS



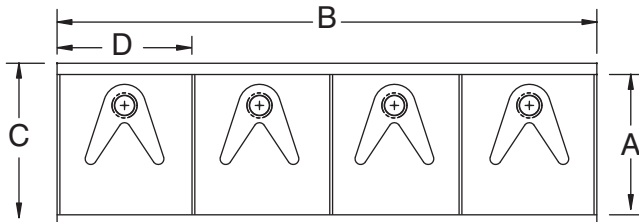
A	B	C	D	"400" Series 16 Ga. S/S "430"	"600" Series 16 Ga. S/S "300"	Ship Weight
21"	36"	24 1/2"	18"	4-2-36	6-2-36	73 lbs.
21"	48"	24 1/2"	24"	4-2-48	6-2-48	86 lbs.
21"	60"	24 1/2"	30"	4-2-60	6-2-60	100 lbs.
24"	48"	27 1/2"	24"	4-42-48	6-42-48	88 lbs.
24"	60"	27 1/2"	30"	4-42-60	6-42-60	108 lbs.

## THREE COMPARTMENTS



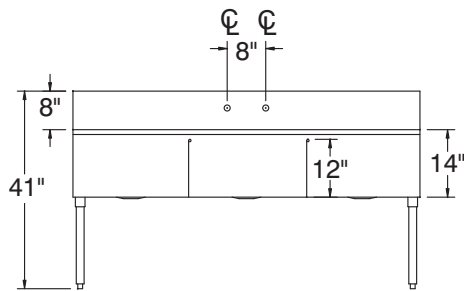
A	B	C	D	"400" Series 16 Ga. S/S "430"	"600" Series 16 Ga. S/S "300"	Ship Weight
21"	36"	24 1/2"	12"	4-3-36	6-3-36	78 lbs.
21"	48"	24 1/2"	16"	4-3-48	6-3-48	91 lbs.
21"	54"	24 1/2"	18"	4-3-54	6-3-54	98 lbs.
21"	72"	24 1/2"	24"	4-3-72	6-3-72	115 lbs.
24"	60"	27 1/2"	20"	4-43-60	6-43-60	105 lbs.
24"	72"	27 1/2"	24"	4-43-72	6-43-72	120 lbs.

## FOUR COMPARTMENTS

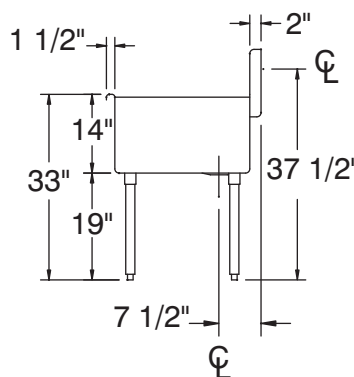


A	B	C	D	"400" Series 16 Ga. S/S "430"	"600" Series 16 Ga. S/S "300"	Ship Weight
21"	48"	24 1/2"	12"	4-4-48	6-4-48	96 lbs.
21"	60"	24 1/2"	15"	4-4-60	6-4-60	115 lbs.
21"	72"	24 1/2"	18"	4-4-72	6-4-72	120 lbs.

## FRONT VIEW



## PLUMBING ROUGH-IN



## DETACHABLE DRAINBOARDS

Size	18 Ga. S/S "430"	Ship Weight
18 x 18	N-5-818	10 lbs.
21 x 18	N-5-18	11 lbs.
21 x 24	N-5-24	12 lbs.
21 x 30	N-5-30	22 lbs.
21 x 36	N-5-36	25 lbs.
21 x 48	N-5-48	28 lbs.
24 x 24	N-54-24	18 lbs.
24 x 36	N-54-36	32 lbs.
24 x 48	N-54-48	36 lbs.

