

Thermal Server Racks

Features

Thermal Server Racks

- An appealing, easy-to-use self-service coffee system.
- Modular design for display and dispensing of a large selection of specialty coffees.
- Hold one or two 2.5 liter thermal servers without base.
- Made of durable, easy-to-clean plastic.
- Drip trays to catch spills and keep serving areas clean.



Model TSR-2 (left) & TSR-1 (right)

(Servers sold separately)

TSR-2 Dimensions:
28.5" H x 7.5" W x 17" D
(72.4cm H x 19.1cm W x 43.2cm D)

TSR-1 Dimensions:
25" H x 7.5" W x 8.5" D
(63.5cm H x 19.1cm W x 21.6cm D)

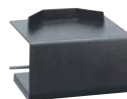
For current specification sheets and other information, go to www.bunn.com.

Related Products

TS—Thermal Server with no base
Product No. : 23300.0010
Capacity: 2.5 liters
Shipping Weight: 5 lbs. (2.3 kg)
Dimensions: 14.4" H x 7" W x 8.1" D



Thermal Server Booster*
Product No. : 18010.6000
Capacity: 1 Thermal Server
Shipping Weight: 2 lbs. (.9 kg)
Dimensions: 6" H x 9.25" W x 8.25" D

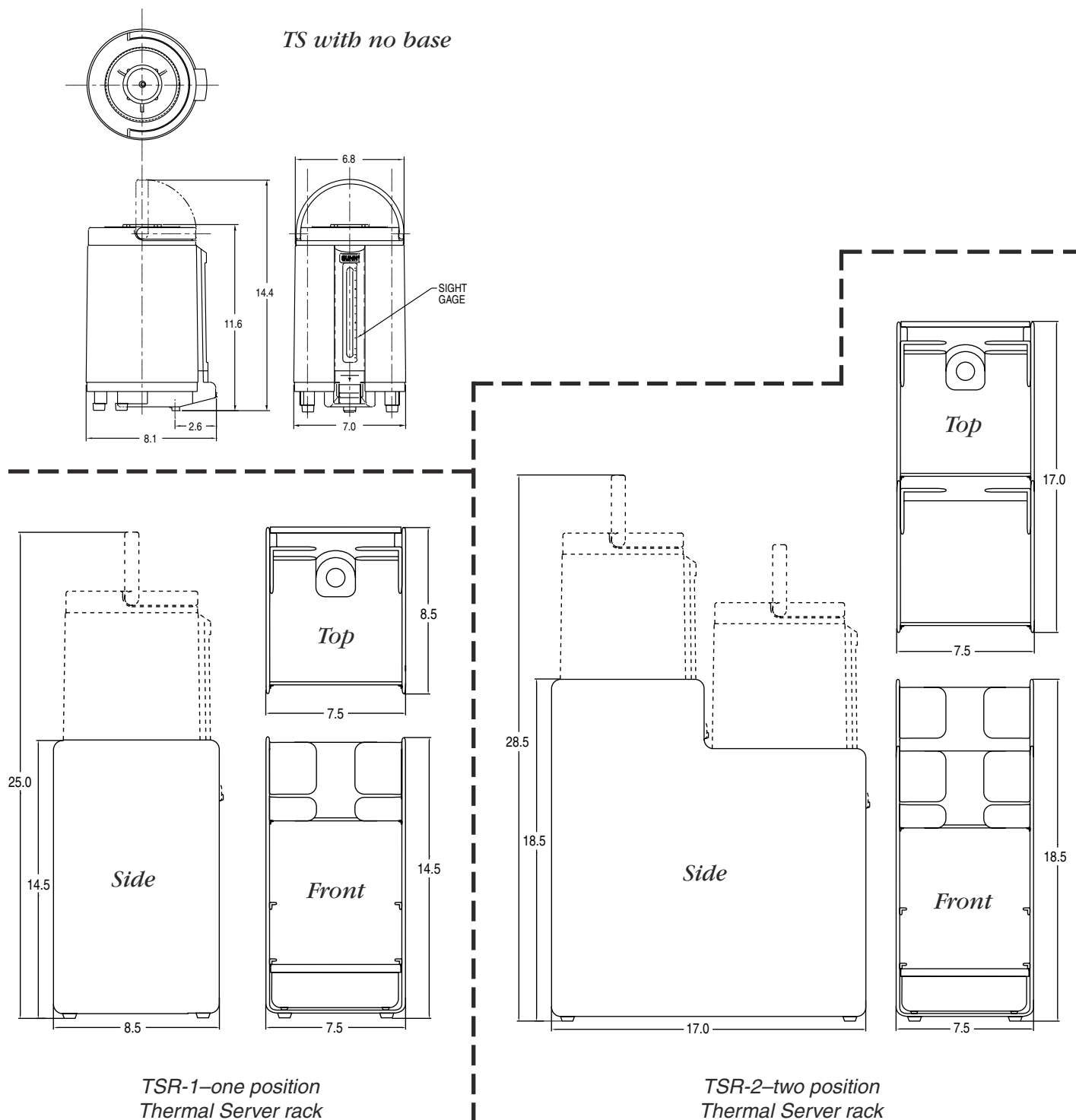


*To be used in conjunction with Thermal Server without base.
Product No. : 23300.0010 & 23300.0006

Model	Agency Listing	International Model	Agency Listing
TSR-1		No International Model	
TSR-2			

Dimensions & Specifications

Model	Product #	Capacity	Cu. Ft.	Shipping Weight
TSR-1	18008.6001	One Thermal Server without base	.6	4.5 lbs. (2.1 kg)
TSR-2	18008.6002	Two Thermal Servers without bases	1.6	8 lbs. (3.6 kg)



BUNN Corporation - 1400 Stevenson Drive Springfield, Illinois 62703 • 800-637-8606 • 217-529-6601 • Fax 217-529-6644 • www.bunn.com

BUNN® practices continuous product research and improvement. We reserve the right to change specifications and product design without notice. Such revisions do not entitle the buyer to corresponding changes, improvements, additions or replacements for previously purchased equipment.

All dimensions shown in inches. Bunn Corporation owns all copyrights relating to materials in this publication. Please contact Bunn Corporation to request permission to reproduce any portion of this publication.