

Prestige 24 Series

Spec Sheet No. PR-40

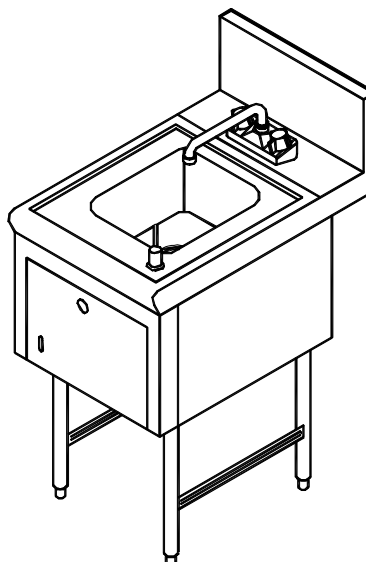
Job Name _____

Item No. _____

Hand Sink Series Standard Features

- All stainless steel structure from top to bottom.
- Mirrored front molding on all units.
- All units are undercoated for sound deadening.
- Will match speed rail profile for that "Flush Look".

- PRHS-24-16
- PRHSST-24-16
- PRHSC-24-16



Soap & Towel
Hand Sink

Specifications

- **Sink:** 9-1/2" x 11-1/2" x 6" bowl, 20 gauge 300 series stainless steel deep drawn.
- **Front Apron:** 20 gauge 300 series stainless steel.
- **Body Sides:** 20 gauge 300 series stainless steel.
- **Backsplash:** 20 gauge 300 series stainless steel.
- **Faucet:** 4" on center deck mount with 6" spout. (1/2 NPT Male)
- **Plumbing:** 3-1/2" basket drain with 1-1/2" I.P.S. drain.
- **Legs:** 14 gauge 300 series stainless steel mounting bracket with 1-5/8" O.D. 18 gauge 300 series stainless steel & 1" adjustable stainless steel bullet feet.
- **Cabinet:** 20 gauge 300 series stainless steel. (PRHSC-24-16 Only)

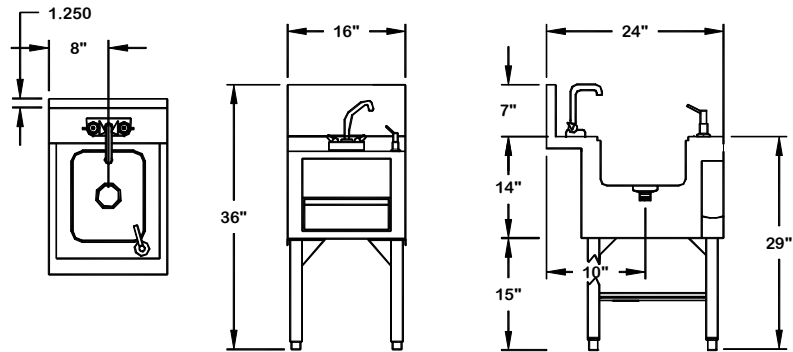


Supreme Metal

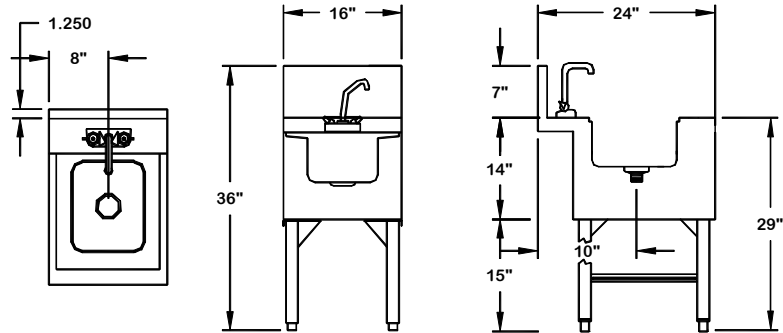
Toll Free: 800-645-2526
www.suprememetal.com

Prestige 24 Series

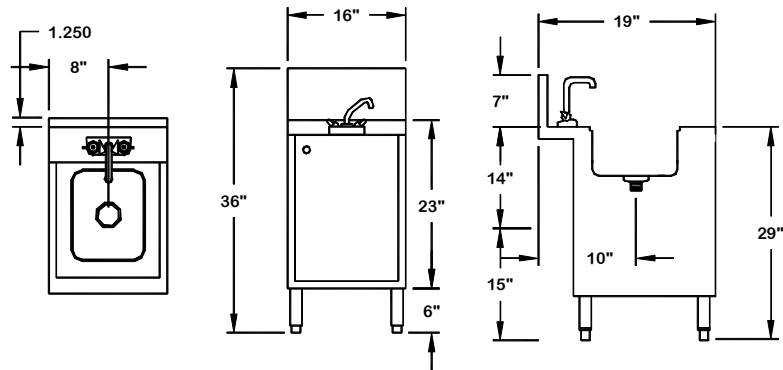
**Soap & Towel
Hand Sink**



**Standard
Hand Sink**



**Hand Sink with
Undercabinet**



Model Number	Overall Length	Length to Drain	Packaged Weight	Cubic Feet
PRHSST-24-16	16"	8"	60	6
PRHSC-24-16	16"	8"	85	10
PRHS-24-16	16"	8"	35	6

SupremeMetal is constantly engaged in a program of improving their products. We reserve the right to change our specifications without prior notice.