

Prestige 24 Series

Spec Sheet No. PR-52

Job Name _____

Item No. _____

Rear Fill-In Standard Features

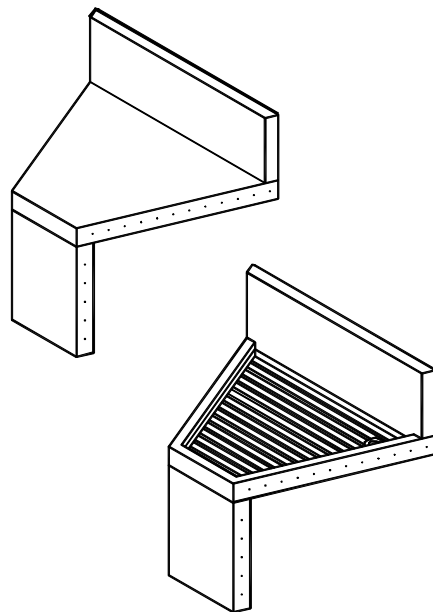
- All stainless steel structure from top to bottom.
- All units are undercoated for sound deadening.
- Continuous ribbed corrugation on corrugated fillers.

Non-Corrugated

- PRF-24-30R
- PRF-24-45R
- PRF-24-60R
- PRF-24-90R
- PRF-24-90CR

Corrugated

- PRF-CR-24-45R
- PRF-CR-24-90R
- PRF-CR-24-90CR



Specifications

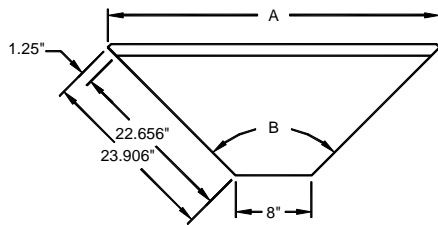
- **Drainboard:** 18 gauge 300 series stainless steel with continuous corrugation. (*corrugated units*)
- **Front Apron:** 20 gauge 300 series stainless steel.
- **Plumbing:** 1" I.P.S. drain. (*corrugated units*)
- **Top:** 20 gauge 300 series stainless steel. (*non-corrugated units*)
- **Backsplash:** 20 gauge 300 series stainless steel.



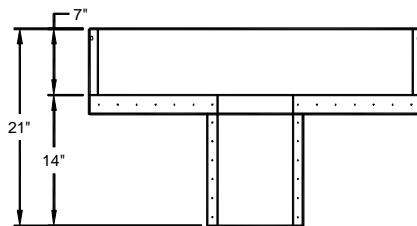
Supreme Metal

Toll Free: 800-645-2526
www.suprememetal.com

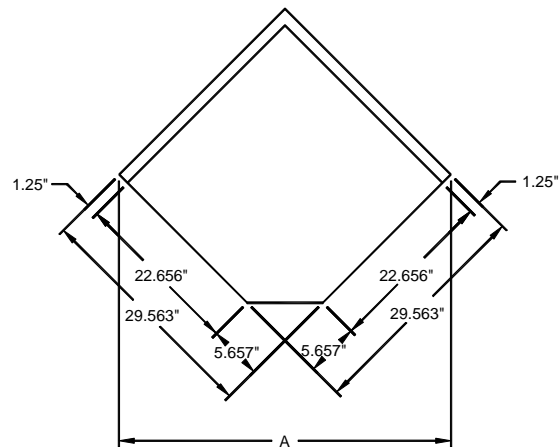
Prestige 24 Series



Typical Fill-In Top View



Typical Fill-In Front View



Typical Corner Fill-In Top View

Model Number	Overall Length (A)	Unit Angle (B)	Corrugation	Packaged Weight	Cubic Feet
PRF-24-30R	20"	30°	NO	22 LBS.	4
PRF-24-45R	26"	45°	NO	22 LBS.	4
PRF-24-60R	32"	60°	NO	22 LBS.	4
PRF-24-90R	41"	90°	NO	27 LBS.	4
PRF-24-90CR	41"	90°	NO	32 LBS.	8
PRF-CR-24-45R	26"	45°	YES	22 LBS.	4
PRF-CR-24-90R	41"	90°	YES	27 LBS.	4
PRF-CR-24-90CR	41"	90°	YES	37 LBS.	8

SupremeMetal is constantly engaged in a program of improving their products. We reserve the right to change our specifications without prior notice.