

Challenger

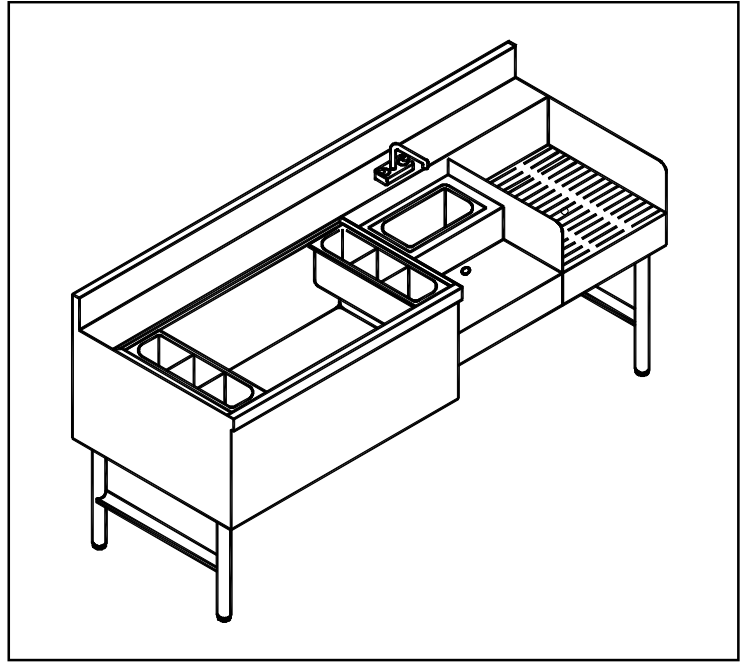
Spec Sheet No. CR-23

Job Name _____

Item No. _____

Uni-Serv Speed Bar with Cold Plate

- CRU-60R-7
- CRU-60L-7



Specifications

- Sink Bowl:** 6"L x 11"W x 6"D 20 gauge 300 series stainless steel seamless deep drawn
- Recess Step:** 22 gauge 300 series stainless steel.
- Glass Shelf:** 22 gauge 300 series stainless steel.
- Ice Bin:** 22 gauge 300 series stainless steel.
- Front Apron:** 22 gauge 300 series stainless steel.
- Backsplash:** 22 gauge 300 series stainless steel.
- Insulation:** 2 lbs. density styrofoam.
- Bottle Rack:** (2) Injection molded plastic.

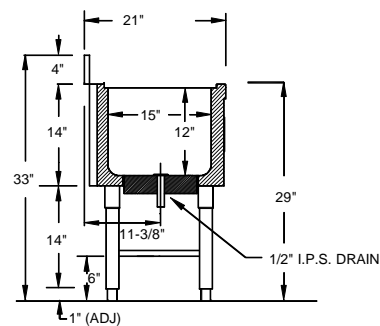
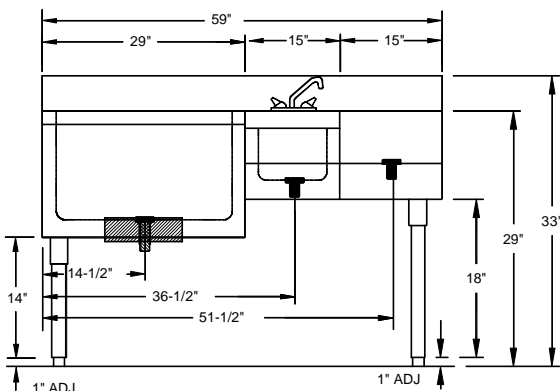
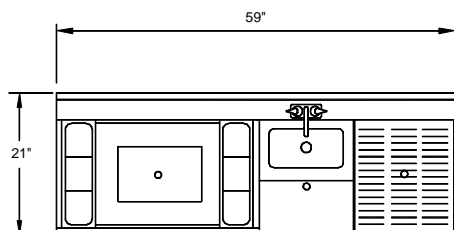
- Under Structure:** 22 gauge galvaneal fronts and backs. 11 gauge electrogalvaneal leg channel.
- Legs:** 1-5/8" O.D. 18 gauge galvanized with electro static black powder coat and black plastic adjustable bullet feet. To include stainless steel legs add the suffix -SS.(Optional)
- Electrical:** 15 amp - 120V duplex receptacle.
- Plumbing:** Ice Bin - 1/2" I.P.S. drain
Glass Shelf - 1" I.P.S. drain.
Sink - 1" I.P.S. drain.
- Faucet:** 4" on center deck mount with gooseneck swivel spout.



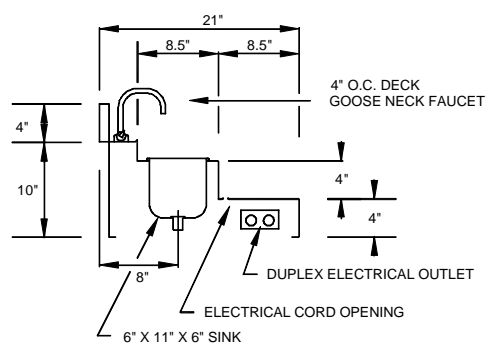
Supreme Metal



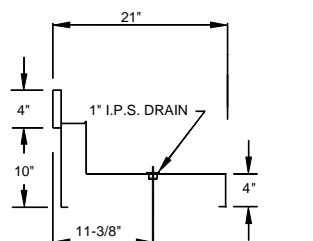
Challenger



ICE CHEST SECTION



RECESS/SINK SECTION



GLASS SHELF SECTION

Model Number	Ice Capacity	Packaged Weight	Packaged Cubic Feet
CRU-60R-7	150 lbs.	145 lbs.	23
CRU-60L-7	150 lbs.	145 lbs.	23

SupremeMetal is constantly engaged in a program of improving their products. We reserve the right to change our specifications without prior notice.