

# Portable Bars

Spec Sheet No. PB-5

## 6' AMBASSADOR PORTABLE BAR

Job Name \_\_\_\_\_

Item # \_\_\_\_\_



- AMS-6B
  - AMS-6B-7
  - AMD-6B- with doors
  - AMD-6B-7 - with doors
- The -7 denotes 7 circuit cold plate.

### Accessories:

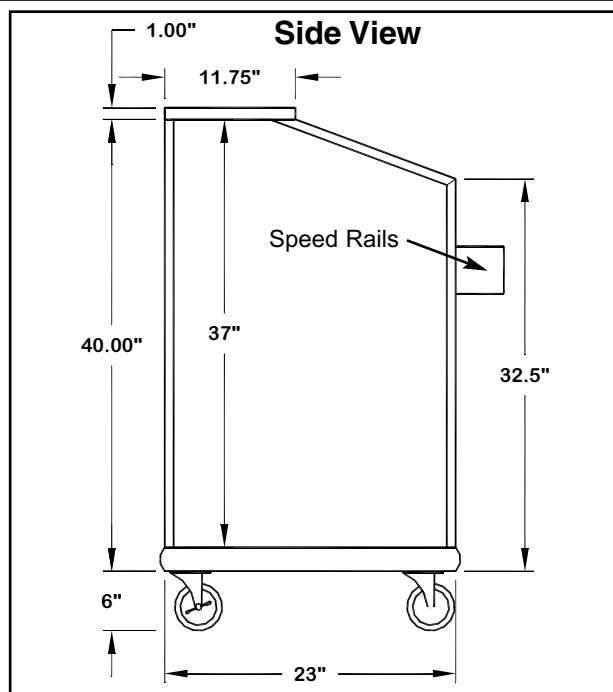
- Custom mica colors available
- Upgrade to double tier stainless steel speed rails- 3ea. DT-2's



AMD-6B shown.

## Specifications

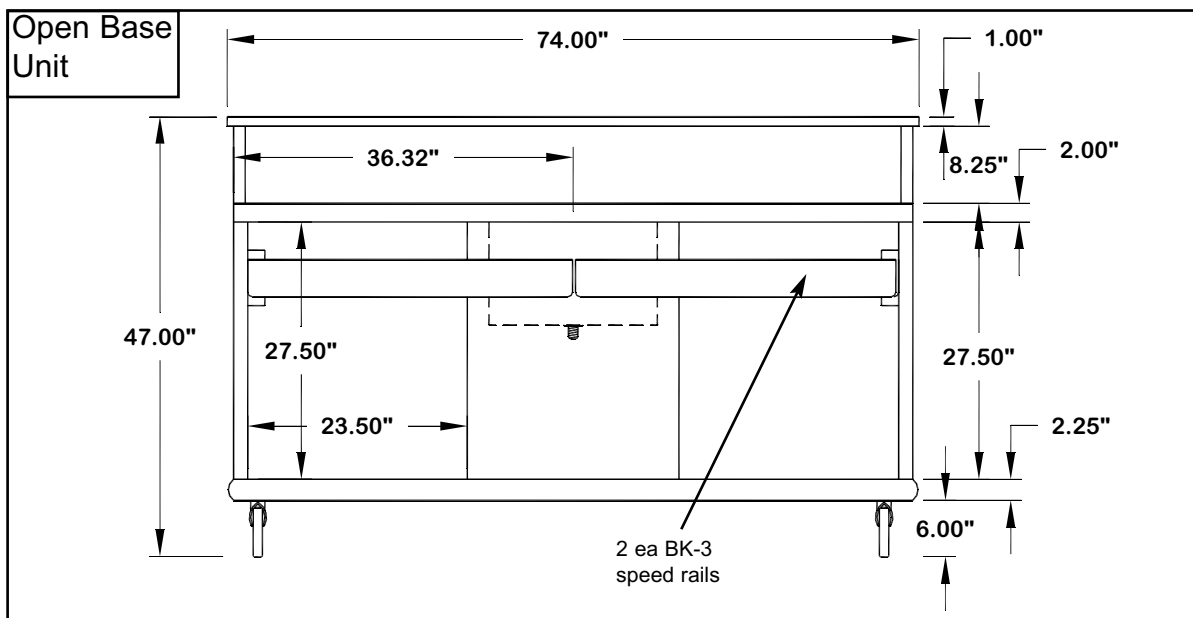
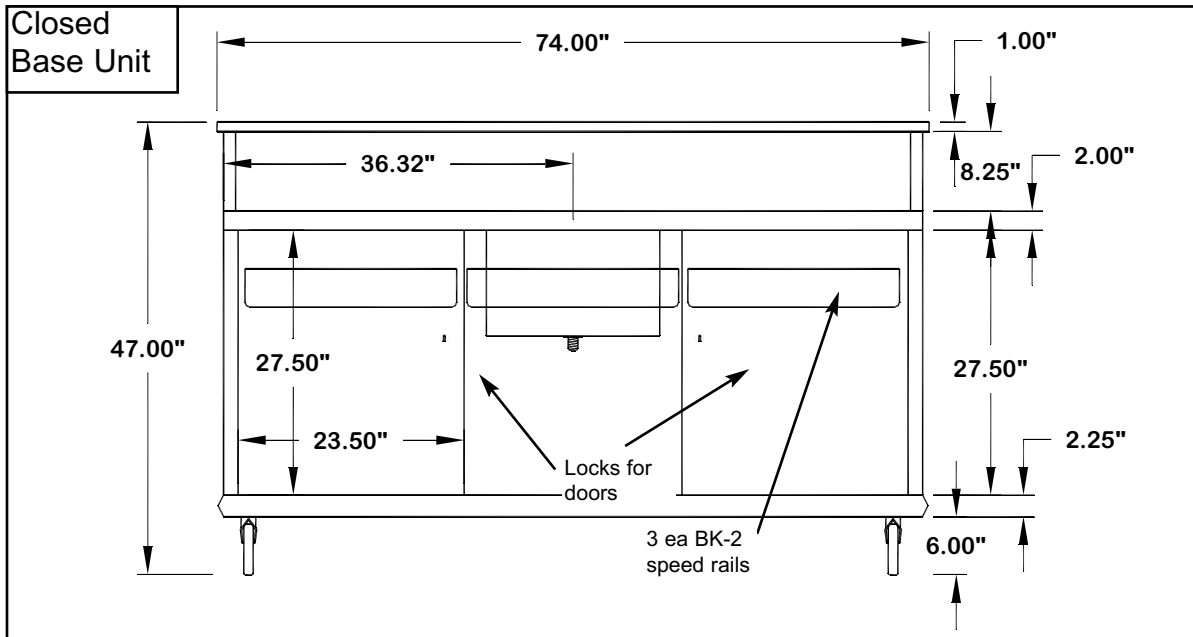
- **Construction:** All stainless steel construction. (interior, doors and bottom) Top and side panels finished in black laminate.
- **Work Area:** Stainless steel work top.
- **Ice Bin:** Insulated 18" x 13 1/2" x 10" bin, complete with drain and shut-off valve. Same specifications on 7 circuit cold plate model.
- **Casters:** 4 ea. 6" swivel casters (2 ea locking)
- **Accessories :** 3 ea. BK-2 stainless steel speed rails(AMD models) or 2 ea. BK-3 speed rails (AMS models) & full perimeter bumper.
- **Shipping Weight:** AMS-6B = 350 lbs. AMD-6B = 370 lbs. AMS-6B-7 = 400 lbs. AMD-6B-7 = 420 lbs.



# Portable Bars



## Ambassador 6' Portable Bar



Model #	Distance to Drain	Storage Cabinet Dims.	Liquor Bottle Capacity
AMS-6B	36.3"	23.5" X 21" X 27.5" each side	18-20
AMS-6B-7	36.3"	23.5" X 21" X 27.5" each side	18-20
AMD-6B	36.3"	23.5" X 21" X 27.5" each side	18-20
AMD-6B-7	36.3"	23.5" X 21" X 27.5" each side	18-20

Toll Free: 800-645-2526  
770-740-6000  
Fax: 770-740-6010

3125 Trotters Parkway  
Alpharetta, GA 30004  
www.suprememetal.com

We reserve the right to modify specifications in line with our policy of continuous product improvement.

© Supreme Metal 2005. Supreme Metal