

DRAWERS

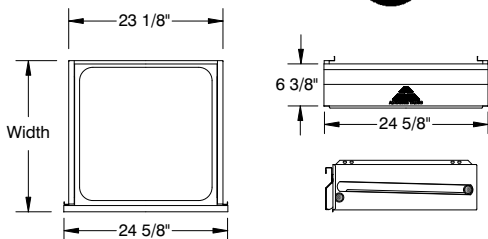
Item #: _____ **Qty #:** _____

Model #: _____

Project #: _____

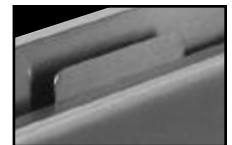
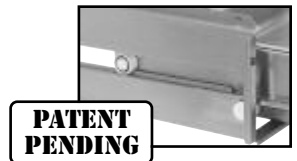
Drawer Pans are 20" left to right

HEAVY DUTY SERIES



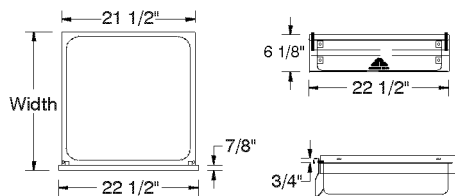
MODEL #	Width	Description	Inset
SHD-2015	17 1/4"	Stainless Steel	20" x 15" x 5"
SHD-2020	22 3/4"	Stainless Steel	20" x 20" x 5"

- Revolutionary Intergral Drawer Slides
- Stainless Steel Front & Sides
- Self Closing Drawer with Quieter Action
- Removable Stainless Steel Inset
- "Safety Stop" to prevent drawer from being pulled out too far
- Units Can Be Stacked to Create Tier Drawers
- NSF Approved



Drawer Safety Stop

DELUXE SERIES

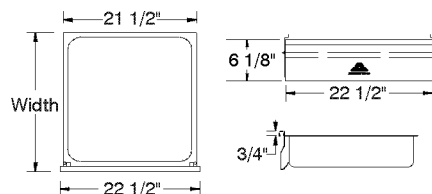


MODEL #	Width	Description	Inset
SS-2015	17 3/4"	Stainless Steel	20" x 15" x 5"
GZ-2015	17 3/4"	Galvanized	20" x 15" x 5"
SS-2020	22 3/4"	Stainless Steel	20" x 20" x 5"
GZ-2020	22 3/4"	Galvanized	20" x 20" x 5"

- Stainless Steel Front
- Ball Bearing Slides
- Removable Inset



BUDGET SERIES



MODEL #	Width	Description	Inset
FS-2015	17 3/4"	Stainless Steel	20" x 15" x 5"
FG-2015	17 3/4"	Galvanized	20" x 15" x 5"
FS-2020	22 3/4"	Stainless Steel	20" x 20" x 5"
FG-2020	22 3/4"	Galvanized	20" x 20" x 5"

- Friction Slides
- Die Formed Handle



DRAWER ACCESSORIES

Pad Lock Hasp
Drawer Lock
Drawers Modified to 15" L/R x 20" F/B
Drawer Adapter/ non catalog tables
Poly Board storage brackets
Drawer Enclosure

TA-13
TA-14 (Does not Apply to Budget Drawers)
TA-50
TA-90 (specify table width)
TA-97 (under NSF Drawers only)
Refer to SHD Series Drawers



ADD-A-TIER DRAWERS



ADT-3-2015 SHOWN
MOUNTS UNDER
OPEN BASE TABLE

STD-3-2015 SHOWN
SITS ON UNDERSHELF



FEATURES:

Stainless Steel Drawers feature roller bearing slides and removable drawer liner for easy cleaning.

ADT Model mounts to table top of open base table with included hardware. Available in two or three drawers.

STD Model features a solid top. Place on undershelf. No installation required. Available in three drawers only.

CONSTRUCTION:

All TIG welded.

MECHANICAL:

Roller bearing slides, drawer enclosure and removable drawer inset.

MATERIAL:

Heavy gauge type 430 series stainless steel.

Model #	Description	Weight
ADT-2-2015	Add-A-Tier (2 Tier)	70 lbs.
ADT-3-2015	Add-A-Tier (3 Tier)	95 lbs.

Model #	Description	Weight
STD-3-2015	3 Tier Drawer Unit	95 lbs.

FACTORY INSTALLED 3 TIER DRAWERS

FACTORY
INSTALLATION ONLY

FEATURES:

3-Tier Drawers factory installed.

1 5/8" diameter tubular stainless steel legs & gussets.

1" adjustable stainless steel bullet feet.

Stainless Steel Drawers feature roller bearing slides and removable drawer inset for easy cleaning.

CONSTRUCTION:

All TIG welded.

MECHANICAL:

Roller bearing slides, drawer enclosure and removable drawer inset.

MATERIAL:

Heavy gauge type 430 series stainless steel.

Model #	Description	Weight
TA-38	3-Tier Drawers	105 lbs.

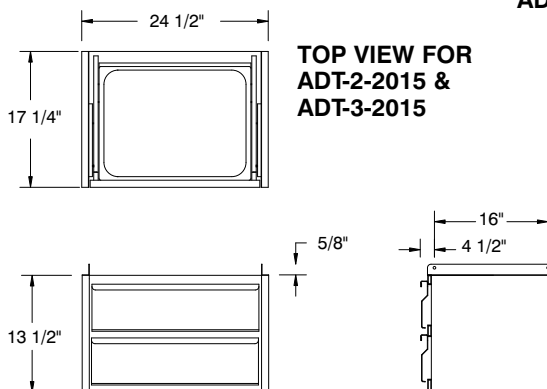


DETAILS and SPECIFICATIONS

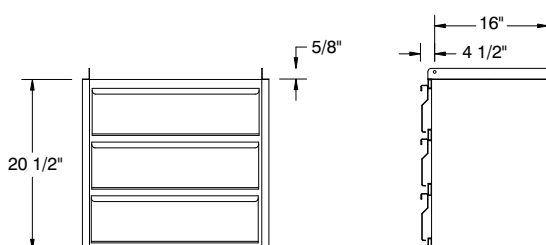
TOL $\pm .500"$

ALL DIMENSIONS ARE TYPICAL

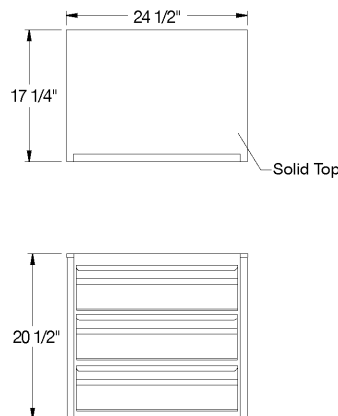
ADT-2-2015



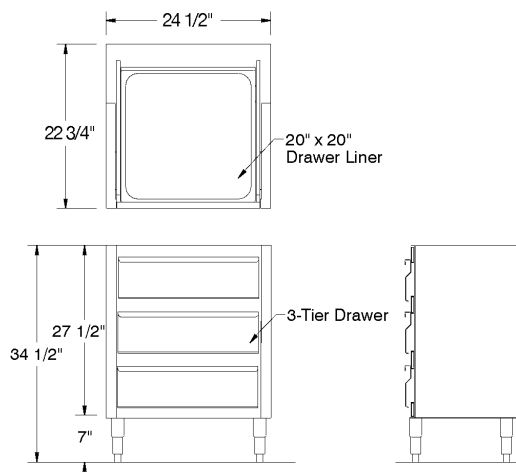
ADT-3-2015



STD-3-2015



TA-38



ADVANCE TABCO is constantly engaged in a program of improving our products. Therefore, we reserve the right to change specifications without prior notice.

© ADVANCE TABCO, JUNE 2006