



STAINLESS STEEL SERVICE & MOP SINKS



9-OP-20 shown with optional faucet, hose & hanger

Floor Mounted



9-OP-20



9-OP-40

Item #: _____ Qty #: _____

Model #: _____

Project #: _____

FEATURES:

Floor mounted unit eliminates the need of lifting heavy containers.

Tile edge furnished on the rear.

Bowls rectangular in design for increased capacity.

CONSTRUCTION:

All TIG welded.

Welded areas blended to match adjacent surfaces and to a satin finish.

MATERIAL:

Heavy gauge type "304" series stainless steel.

SERVICE & MOP SINKS

FEATURES:

Leg mounted design.

High back splash.

CONSTRUCTION:

All TIG welded.

Welded areas blended to match adjacent surfaces and to a satin finish.

MATERIAL:

Heavy gauge type "304" series stainless steel.

Conventional



8-OP-16



4-OP-18

Economy

16" HIGH SIDE & BACK SPLASHES FOR 9-OP SERIES MOP SINKS

16 Gauge, 300 Series Stainless Steel
Available with Back & Left Side,
Back & Right Side or Back & Both Sides
(Mounting Hardware Included)



MODEL	Fits Units:	Height Above Finished Floor (A.F.F.)
K-288LorR	9-OP-20	26"
	9-OP-40	32"
K-290LorR	9-OP-28	26"
	9-OP-48	32"
Splashes Available on All 3 Sides		
K-298	9-OP-20	26"
	9-OP-40	32"
K-299	9-OP-28	26"
	9-OP-48	32"

SERVICE & MOP SINK ACCESSORIES



MOP DRAINAGE TRAY

- 16 Gauge, 300 Series Stainless Steel
- Includes Cast 1/2" Drain & Plastic Hose
- Wall Mounted (Hardware not Included)
- 2" Tray Height with 6" Rear Splash (Overall Height)

MODEL L x W x H
K-243 32" x 4" x 6" Approx. Wt. 13 lbs.

FLOW RATE
9.6 GPM/
36.3 LPM



K-240
SERVICE FAUCET



K-16 FLOOR
MOP SINK
REPLACEMENT
DRAIN



K-242 MOP HANGER - 23" Wide



		UTILITY SHELF - 8" WIDE	
inches	mm	MODEL	Approx Wt Approx Cubes
24"	610	K-245	12 lbs. 1
36"	914	K-246	15 lbs. 2



K-244 HOSE & HANGER



Customer Service Available To Assist You 1-800-645-3166 8:30 am - 8:00 pm E.S.T.

Email Orders To: customer@advancetabco.com. For Smart Fabrication™ Quotes, Email To: smartfab@advancetabco.com or Fax To: 631-586-2933

NEW YORK

Fax: (631) 242-6900

GEORGIA

Fax: (770) 775-5625

TEXAS

Fax: (972) 932-4795

NEVADA

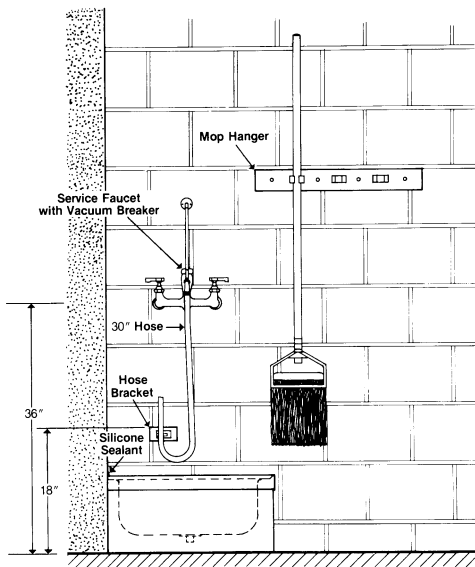
Fax: (775) 972-1578

DIMENSIONS

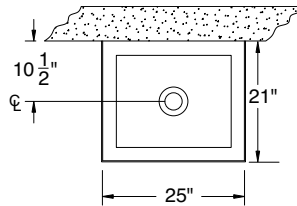
TOL Overall: $\pm .500''$
Interior: $\pm .250''$

ALL DIMENSIONS ARE TYPICAL

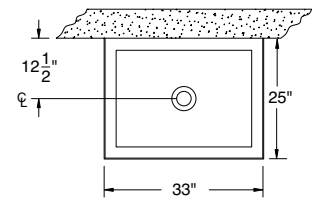
SUGGESTED INSTALLATION



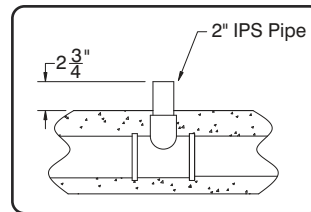
- 9-OP-20:** 16" x 20" x 6" Bowl with 10" Overall Height.
- 9-OP-28:** 20" x 28" x 6" Bowl with 10" Overall Height.
- 9-OP-40:** 16" x 20" x 12" Bowl with 16" Overall Height.
- 9-OP-48:** 20" x 28" x 12" Bowl with 16" Overall Height.



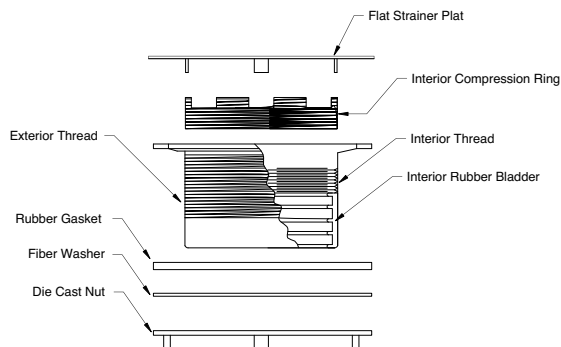
**9-OP-20
9-OP-40**



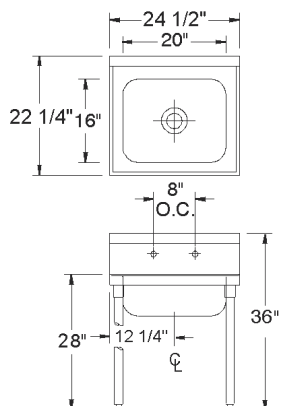
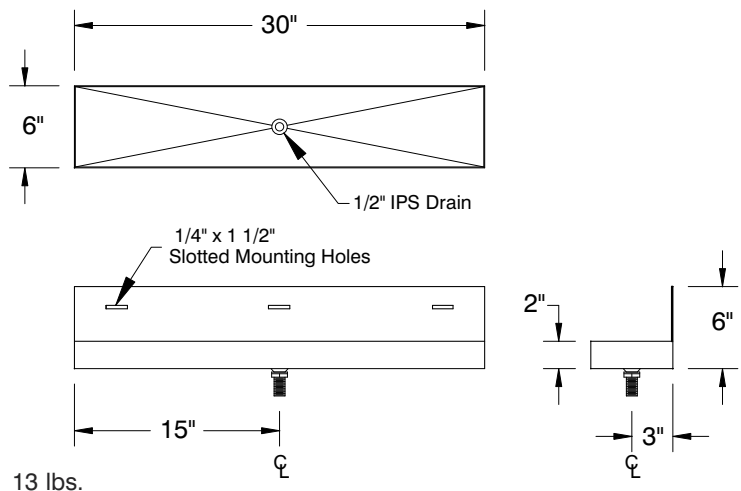
**9-OP-28
9-OP-48**



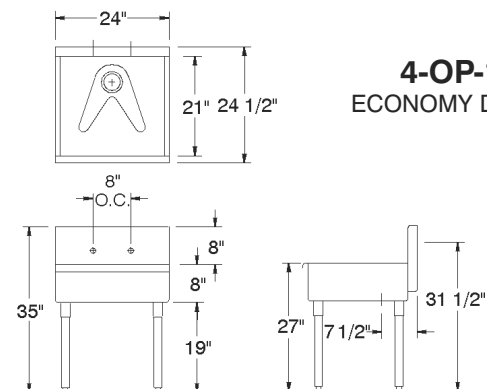
MOP SINK DRAIN ASSEMBLY



K-243 MOP DRAINAGE TRAY



**8-OP-16
CONVENTIONAL DESIGN**



**4-OP-18
ECONOMY DESIGN**

1 1/2" IPS

